

Note: The installation screenshots were taken in Windows 2000. For other OS, the installation procedure will be nearly the same but the screenshots will differ in appearance somewhat.

Package Contents:

D-Link Air DWL-610 Wireless Cardbus Adapter
Printed Quick Installation Guide
CD with Manual and Drivers

If anything is missing, please contact the reseller.

System Requirements

A laptop computer with an available 32-bit Cardbus PC Card slot

At least a 300 MHz processor and 32 MB of memory

Cardbus Controller properly installed and working

An 802.11b Access Point (for Infrastructure Mode) or another 802.11b wireless adapter (for Ad-Hoc mode.)



1

Installing the DWL-610 Utility

Turn on the computer.

Insert the D-Link DWL-610 Installation CD into your CD-ROM drive.

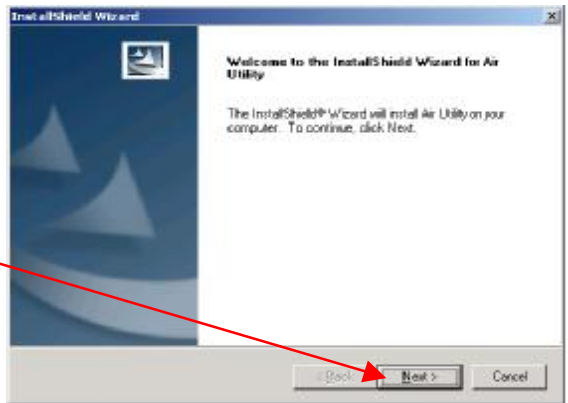
Click **Install Utility.**



Note: Do not insert the DWL-610 Cardbus Adapter. Wait until the Utility has loaded.

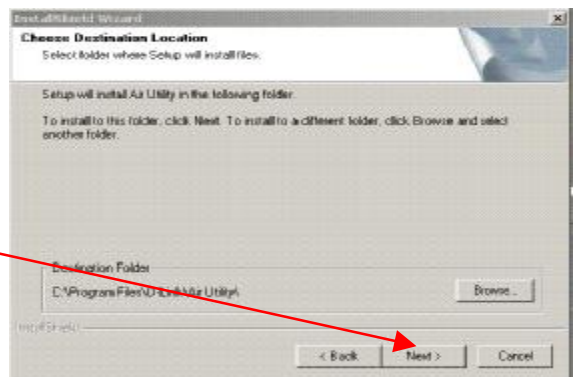
The following window will appear.

Click **Next.**



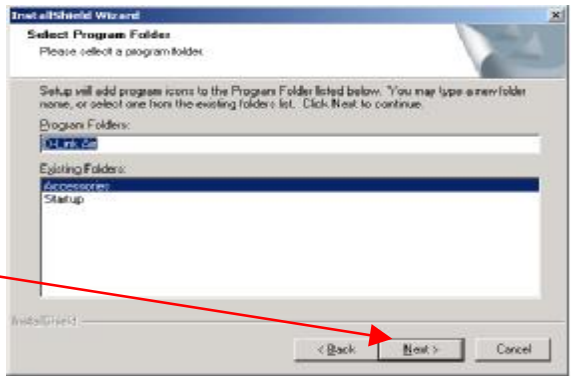
Accept the default destination directory, or browse to one of your choosing.

Click **Next.**

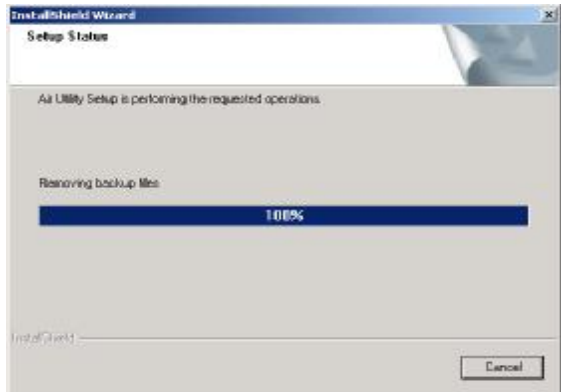


Again, accept the default folder name or type a new name of your own.

Click **Next.**

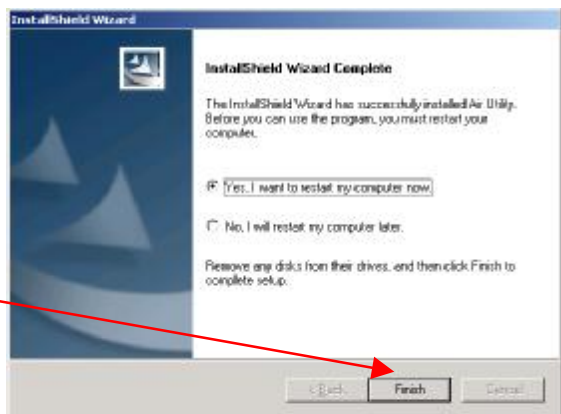


The **Setup Status** window will appear, showing various operations being performed.



Done. The DWL-610 Utility has been installed. Now, restart your computer for settings to take effect.

Click **Finish.**

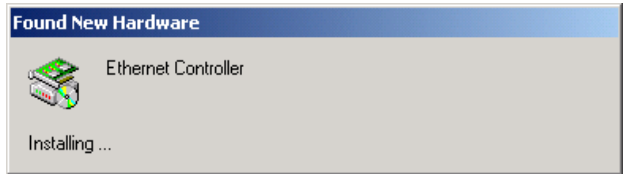


2

Installing the DWL-610 and the Driver

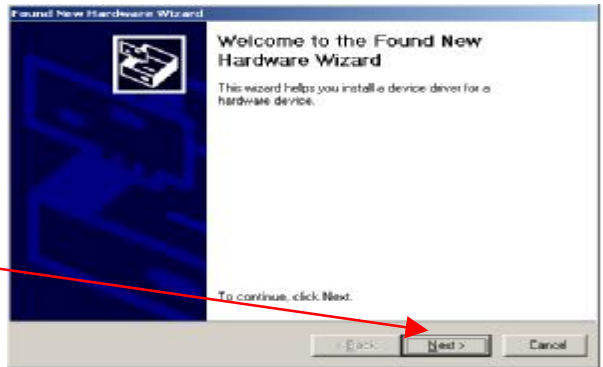
When your computer has restarted, insert the DWL-610 Cardbus Adapter into an available slot on your notebook or laptop. And re-insert the Installation CD, which is Auto-Run and will present a “splash screen.” For the moment, close the splash screen and proceed as follows.

Your computer will find the DWL-610 and present this window.



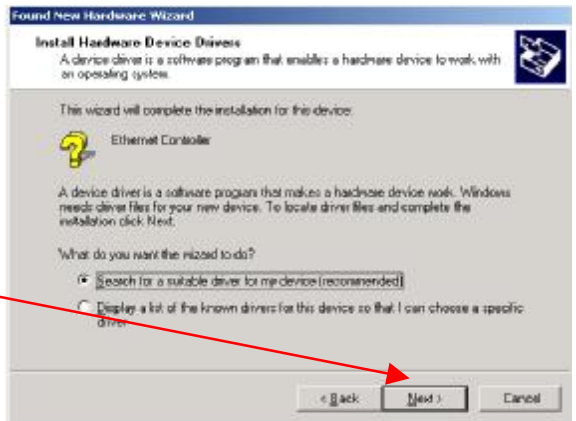
As installation progresses, the following window appears.

Click **Next.**



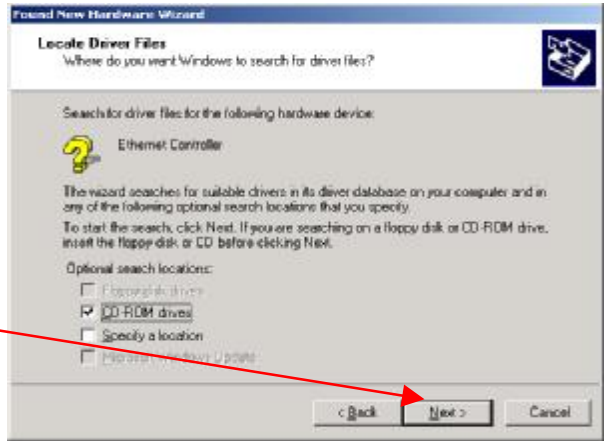
Make sure that **Search for a suitable . . .** is selected and the Installation CD is inserted..

Click **Next.**



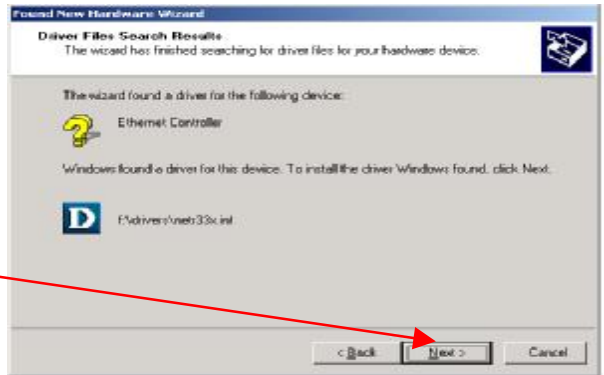
The Installation Wizard now asks where to search for a driver. Check the box for **CD-ROM drives**.

Click **Next**.



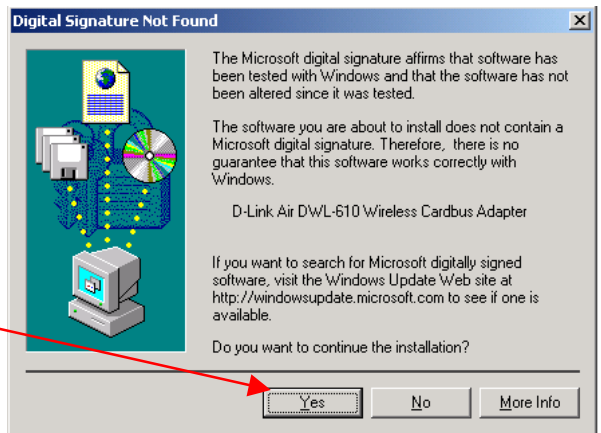
When the Wizard finds the driver for the DWL-610, it announces the name and location of the file.

Click **Next**.



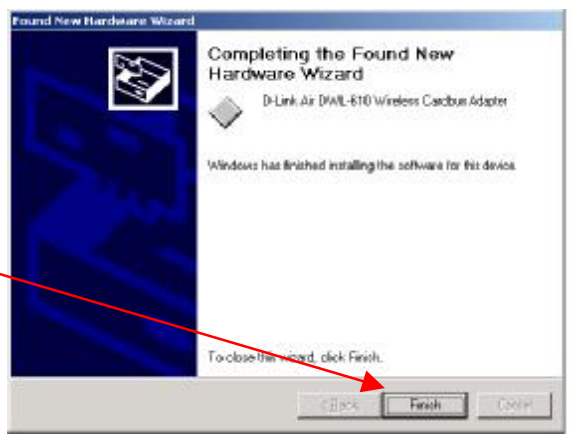
Next, the Microsoft “digital signature” window reminds you that this device is not a Microsoft product.

Click **Yes**.



The Wizard announces that the installation is complete.

Click **Finish.**

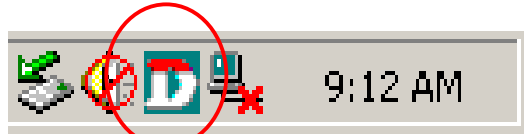


3

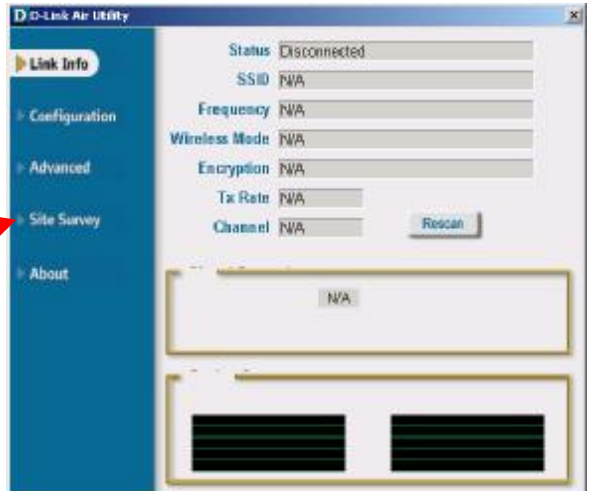
Connecting to a Wireless Network

Once you have the DWL-610 properly installed, you will see the icon shown at right that will appear in your task bar on the bottom of the screen.

Note: For first-time use only, you may have to unplug and re-insert your cardbus adapter before this icon appears.

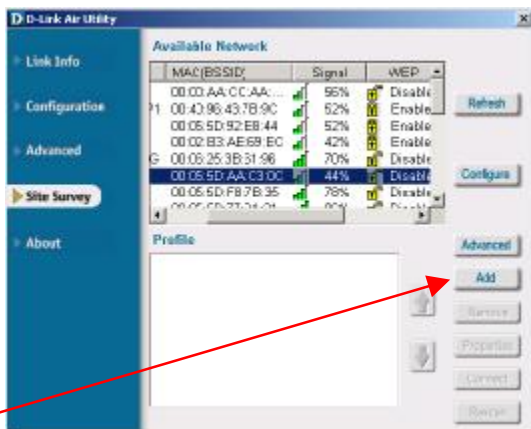


Double-click on the icon in the task bar. The **Link Info** window appears, showing your device as disconnected.



Click **Site Survey**.

The Site Survey displays a list of available wireless networks. Scroll through the list to find a network familiar to you. Be sure to use the horizontal scroll bar to check whether or not WEP has been enabled or disabled.* Select a network by clicking on it.



Click Add.

The **Configuration** window appears. Click in the SSID box and enter the name of the network you've selected.

Accept the default settings, or modify them.

- **Wireless Mode:** Infrastructure (default) or Ad Hoc
- **Data Encryption:** Enabled or Disabled (default)
- **Authentication:** Open or shared
- **Key Length:** 64- or 128-bit, in hexadecimal or ASCII formats.

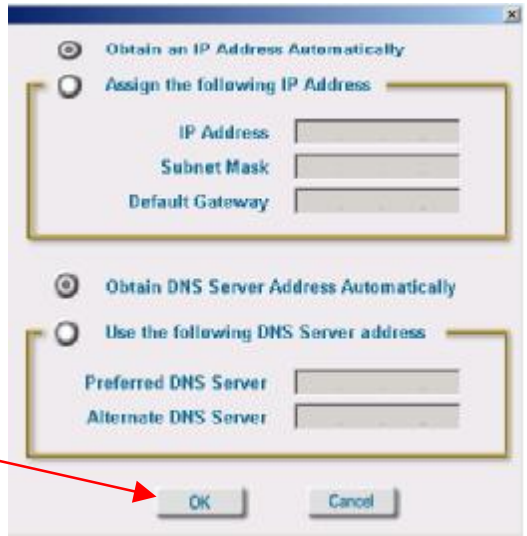


**Important: If Data Encryption (WEP) is enabled on a network, all devices must use the same WEP setup. For first-time setup, it's strongly recommended that Data Encryption be disabled and Authentication remain Open. For more information, read the User's Guide included on the Installation CD.*

- **IP Settings:** You can let the computer automatically choose an IP Address and NS Server Address (default), or assign specific values.

For simplicity and to make sure your basic setup is working, accept the default settings.

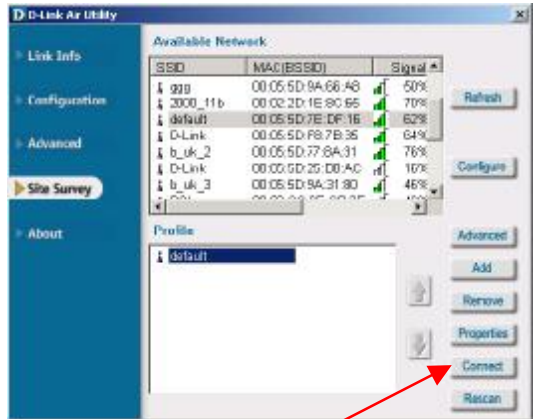
Click **OK.**



Click **OK** in the Configuration window, and you'll be returned to the Site Survey window.

The network you have highlighted and added now appears in the **Profile** section at the bottom. Click on it to reveal more menu items.

- **Advanced:** Allows you to choose network mode.
- **Remove:** Disconnects you from a network.
- **Properties:** Deals with Data Encryption and Authentication.
- **Rescan:** Reorders profiles, with most accessible listed first.



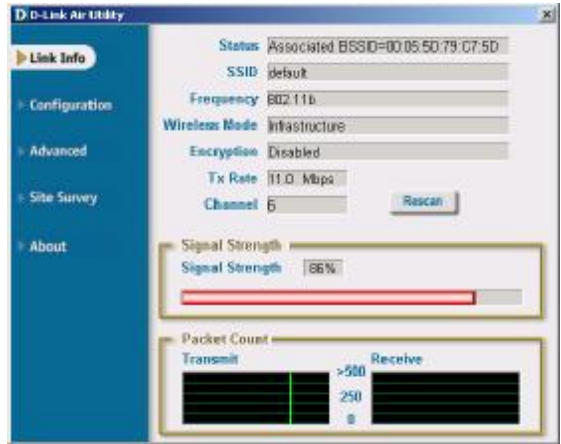
Click **Connect.**

For now, the most important button is

- **Connect:** Hooks you up to a wireless network.

Click on **Link Info**.

Within a few seconds, information concerning your connection will be displayed. among other data, your Signal Strength and transmit/receive Packet count are shown.



That's it! Your notebook computer is now part of a wireless network. Now, no matter where you are, you can confer with colleagues, share data, and take advantage of all the Internet has to offer . . . all without wires.

4

Read the Manual . . . please

As you move from one network to another, your basic configuration may have to change to accommodate the needs of the new network. Your DWL-610 can adapt to many different network environments.

This guide is designed to take you through basic setup and installation. Follow a few simple steps and your network will soon be up and running. For details of more advanced configuration, and for an explanation of the different types and uses of wireless networks, please see the Setup/User's Guide on the Installation CD-ROM.