

How to Upgrade Firmware with TFTP Server

This is a guide to upgrade the firmware using a tftp server.

System Requirements:

IE9 or above (We Recommend you use Internet Explorer)

Putty

tftp Server

Console cable

First we need to download the latest firmware. You can do this by going to our ftp site shown below:

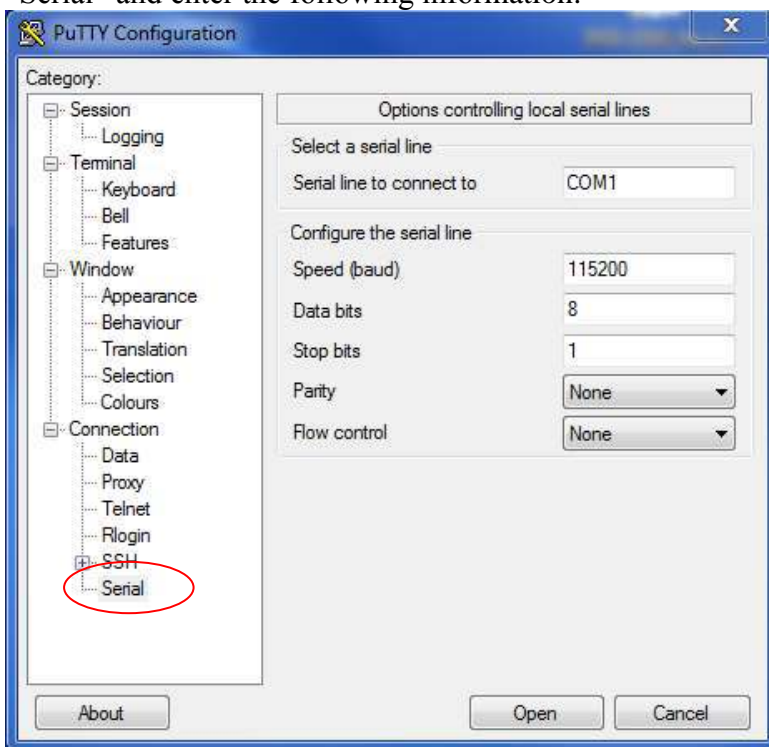
ftp://ftp.dlink.eu/Products/dgs/dgs-1510/driver_software/

Download the latest firmware file, unzip it and store it in a safe place.

Create A User:

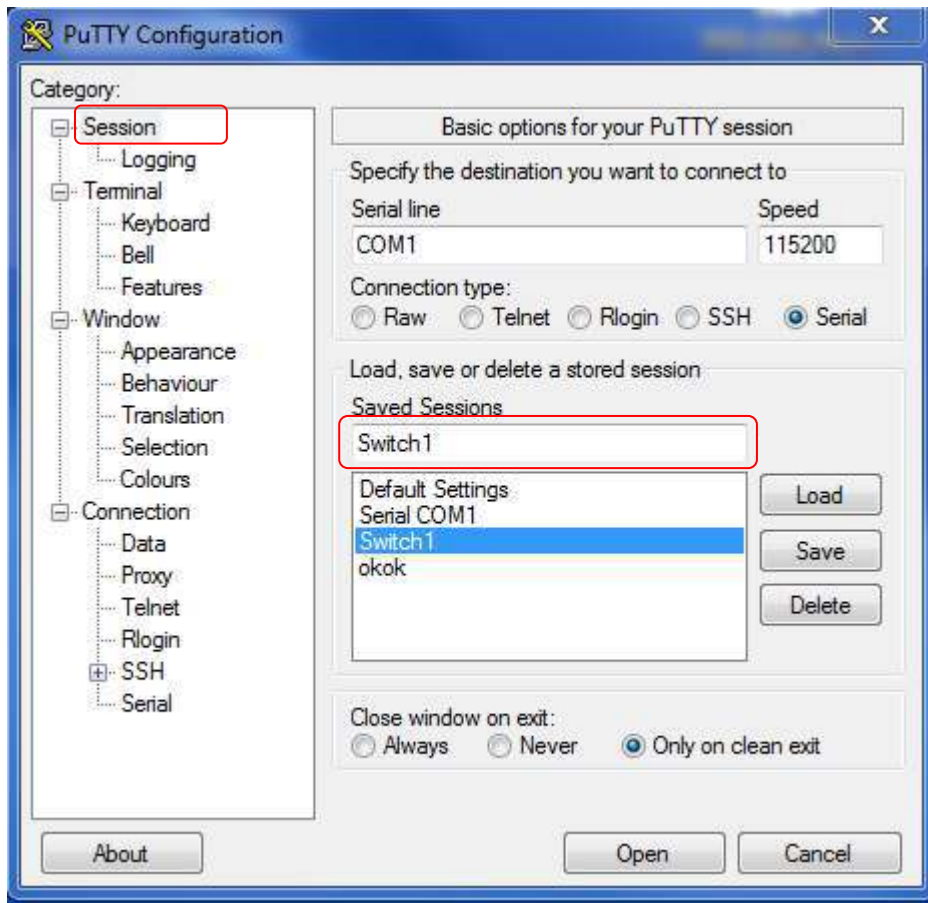
To enable us to upgrade the firmware, we will need to create an admin user with the correct privileges.

Connect PC / Laptop to switch using the console cable. Once connected, open Putty, click on “Serial” and enter the following information:

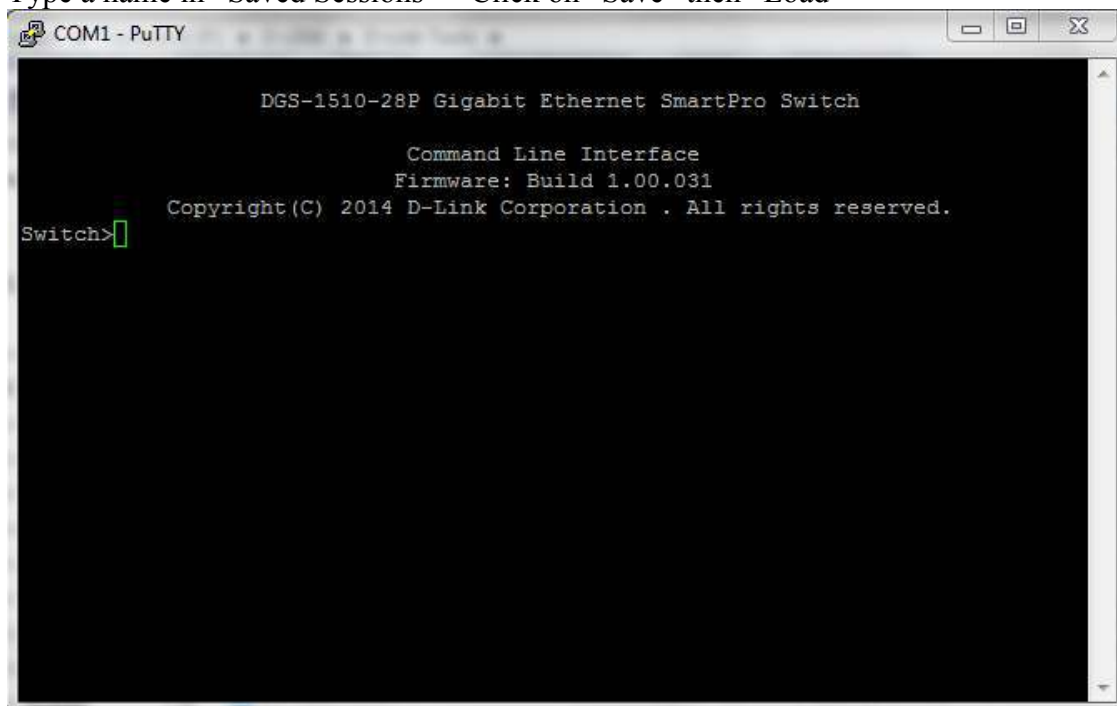


When entered, click on “Session”

Create A User:



Type a name in “Saved Sessions” – Click on “Save” then “Load”

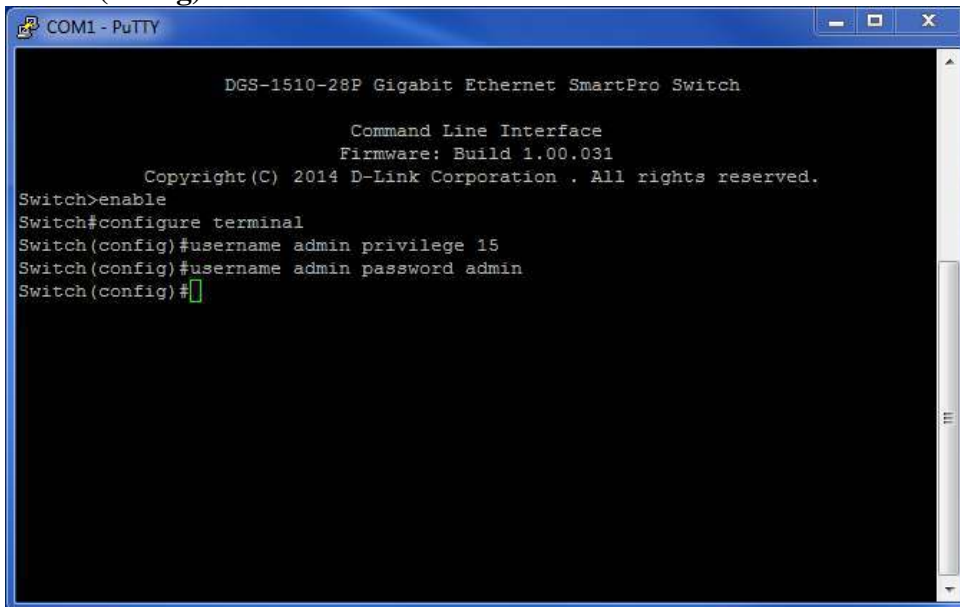


You should see the above screen.

Type the following commands followed by enter key:

Create A User:

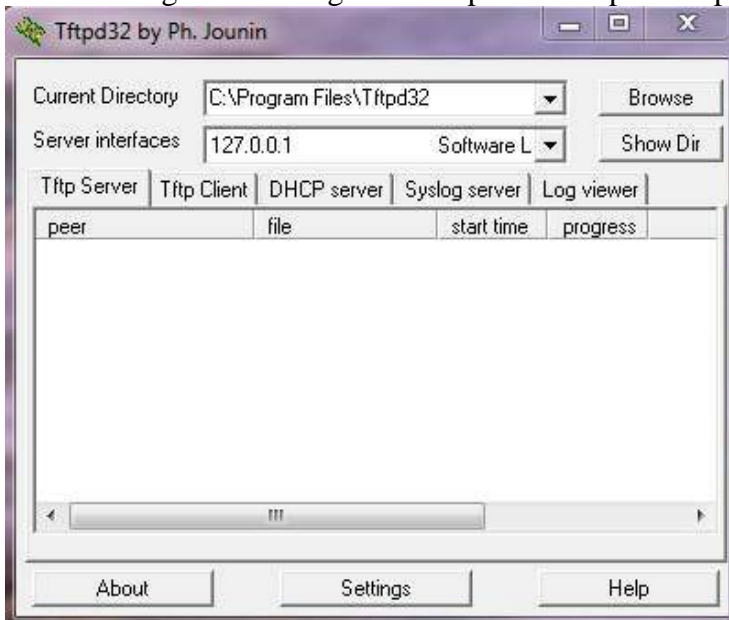
```
Switch>enable
Switch#configure terminal
Switch(config)#username admin privilege 15
Switch(config)#username admin password admin
Switch(config)#
```



```
COM1 - PuTTY
DGS-1510-28P Gigabit Ethernet SmartPro Switch
Command Line Interface
Firmware: Build 1.00.031
Copyright (C) 2014 D-Link Corporation . All rights reserved.
Switch>enable
Switch#configure terminal
Switch(config)#username admin privilege 15
Switch(config)#username admin password admin
Switch(config)#
```

The above screen should be present after all commands have been executed.

The next stage is to configure the tftp server. Open a tftp server and configure as follows:



Leave the “Current Directory” as Default – In this example the default is: C:\Program Files\Tftpd32 (here is where you need to put the firmware file) “Server interfaces” you can leave as 127.0.0.1 (this is the local machine)

Create A User:

When complete, go to your web browser (we recommend IE)



Type in the IP of the DGS-1510-28P – In this example: 10.90.90.90 – then hit enter key.

Connect to 10.90.90.90

User Name: admin

Password: [masked]

Language: English

Login Reset

Once logged in – go to “Tools” – “Firmware Upgrade & Backup” – “Firmware Upgrade from TFTP”

Tools > Firmware Upgrade & Backup > Firmware Upgrade from TFTP

Gateway	192.168.1.1
System Time	01/01/2000 00:06:34
Serial Number	RZ3W1DB000005

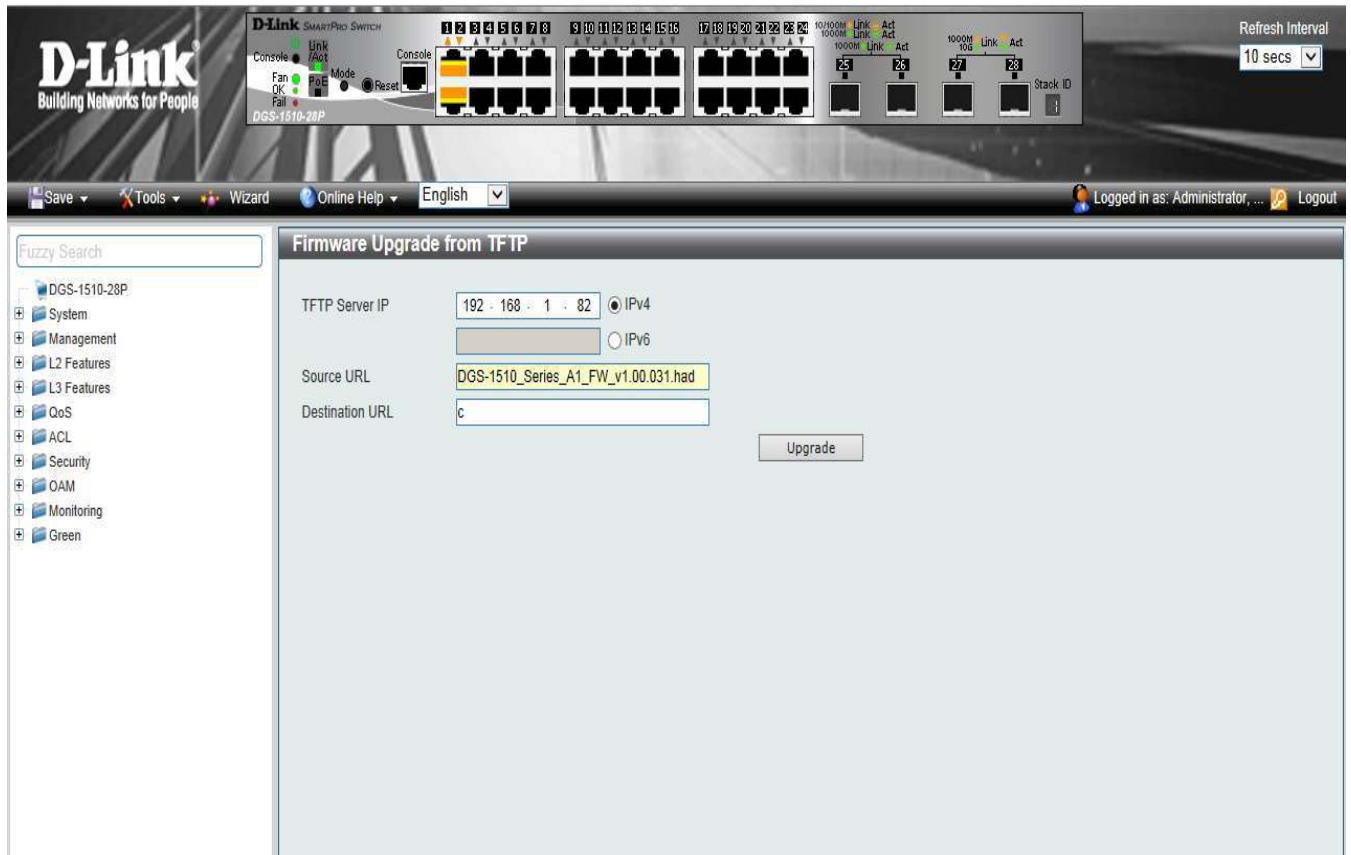
CPU Utilization: Average 14%, 8%

Flash: 21344KB total, 8593KB used (29%)

Memory: 194112KB total, 68032KB used (26%)

You should see the below screen

Create A User:



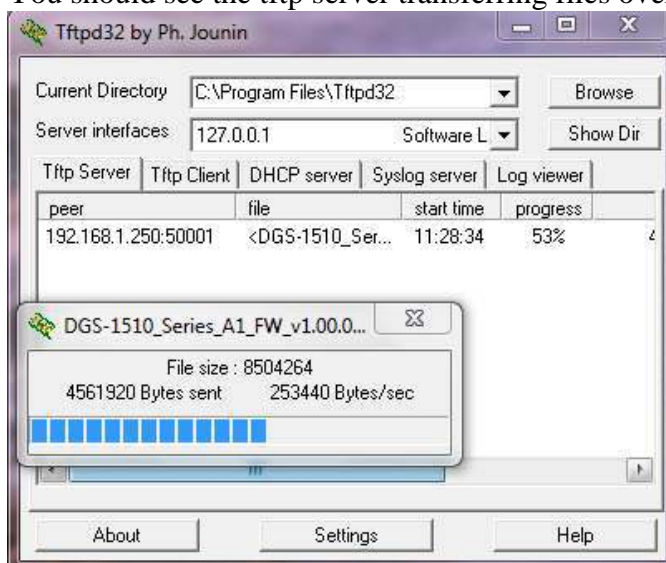
Type in the TFTP Server IP. In this example it will be: **192.168.1.82**.

The “Source URL” is the complete name of the file. In this example it is:

DGS-1510 Series A1 FW v1.00.031.had

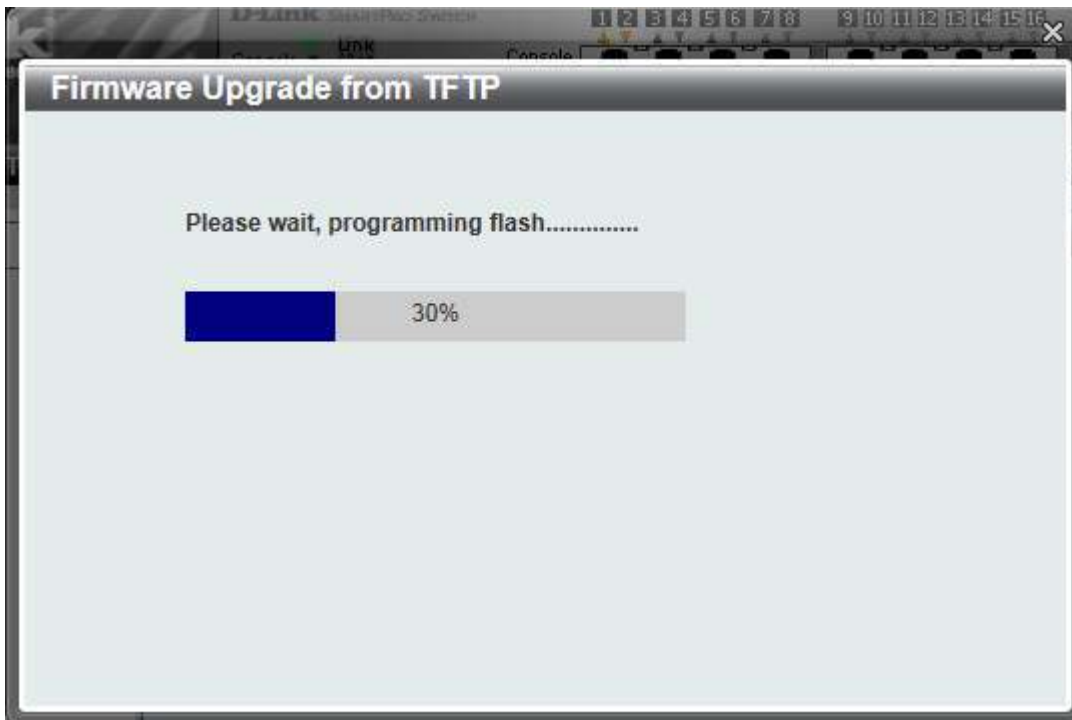
For “Destination URL”, type the letter “c”, then click on “Upgrade”

You should see the tftp server transferring files over to the DGS-1510-28P

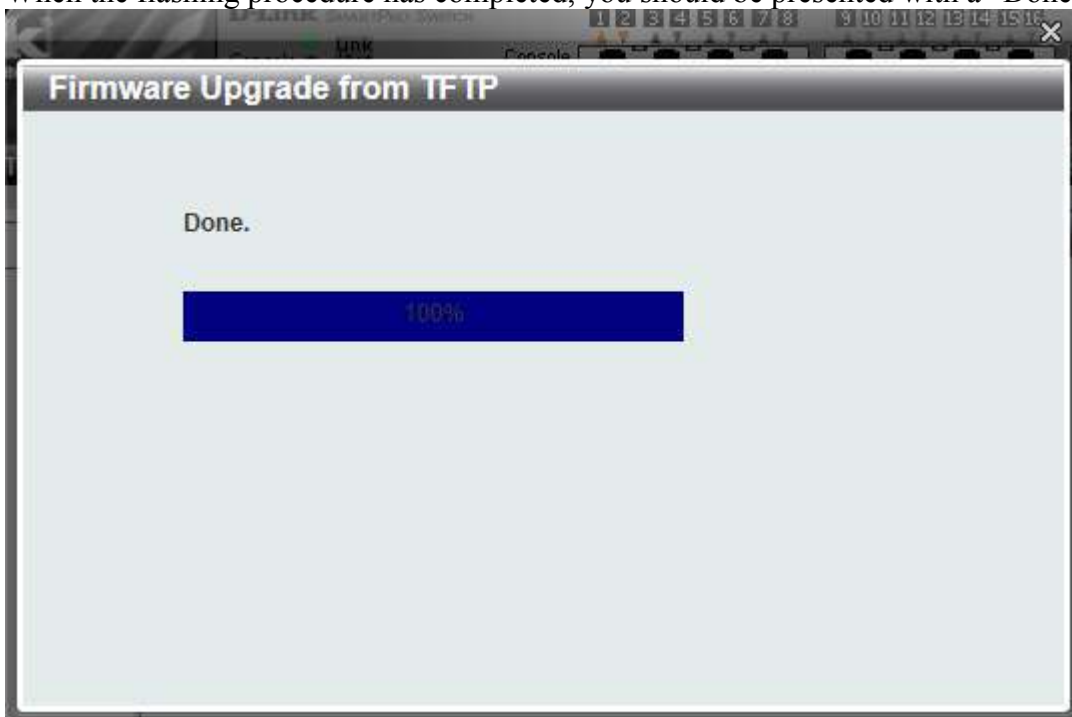


Once transfer has completed, the next screen you will see is the process regarding flashing

Create A User:

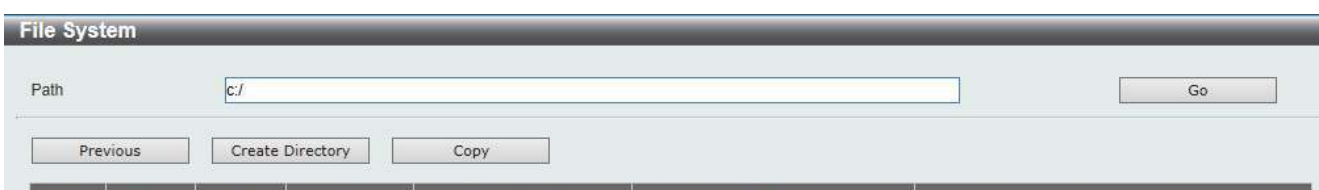


When the flashing procedure has completed, you should be presented with a “Done” message.



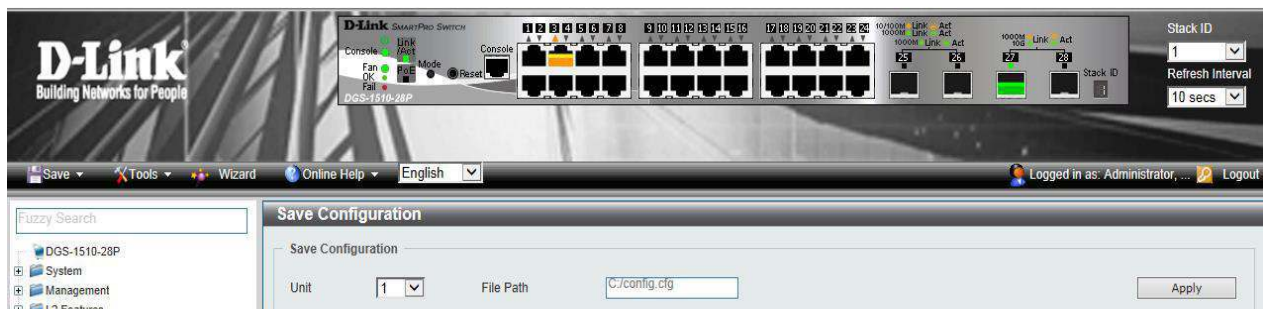
The firmware has been uploaded

Before the DGS-1510-28P is able to use the new firmware, the file needs to be allocated to the boot process of the switch. Click on “Boot Up” where column “Name” has “c”. (The “c” refers to what we used in this example for “Destination URL”).

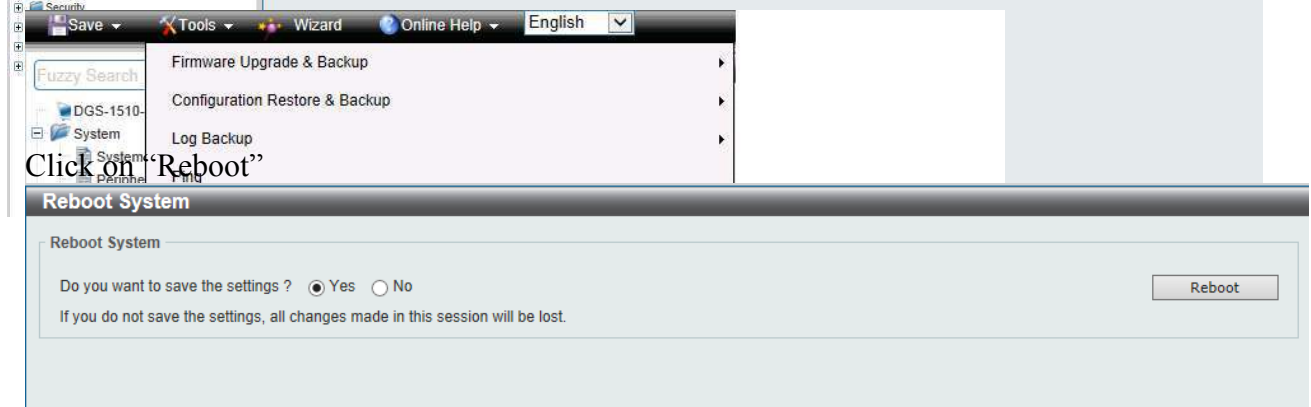


Create A User:

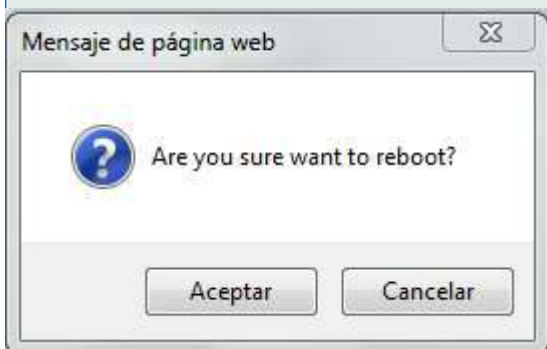
The important part now is to save the configuration by clicking on “Save”



Click on “Apply”. Then click on “Tools” – “Reboot System”

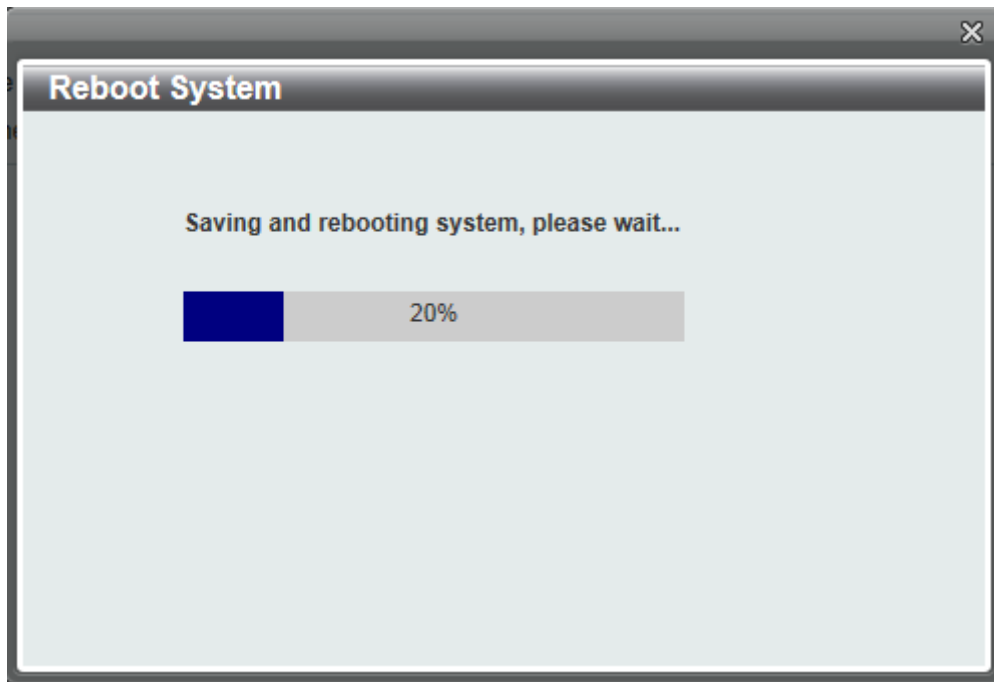


Click on “Reboot”



Confirm the reboot – “Accept”

Create A User:



The above screen will be presented. Wait until progress-bar has finished. Then you will need to login again.

To verify the firmware upgrade, click on “DGS-1510-28P” to give you “Device Information”

Device Information			
Device Type	DGS-1510-28P Gigabit Ethernet Sm...	MAC Address	9C-D6-43-1A-6A-A0
System Name	Switch	IP Address	192.168.1.250
System Location		Mask	255.255.255.0
System Contact		Gateway	192.168.1.1
Boot PROM Version	Build 1.00.009	System Time	01/01/2000 00:04:31
Firmware Version	Build 1.00.031	Serial Number	RZ8W1DB000005
Hardware Version	A1		

Utilization	
CPU	
Average: 11 %	9 %

Flash		Memory	
13464KB	194023KB		
16473KB	68121KB		
55 %	26 %		

Here you can see the latest firmware has been successfully uploaded and installed.