

DSP-W115

Wi-Fi Smart Plug



Product Highlights



Automatic Scheduling

Turn on/off your home appliance based on time/date schedules



Access from Anywhere

Control from anywhere with the mydlink app



On & Off Control

Turn your home appliance on and off from your phone

Your Home, Only Smarter.

The mydlink Wi-Fi Smart Plug is a versatile and easy-to-use device that allows you to control an electrical appliance from your smartphone or tablet, wherever you are. You can set automatic schedules to turn on or off appliances such as lamps and heaters at specific times and days of the week. It works with mydlink Smart Home devices¹, Amazon Alexa, the Google Assistant and IFTTT, allowing you to voice control and set up home automation.

Control Your Appliance from Anywhere

With the Wi-Fi Smart Plug, you can control the attached electrical appliance in your home while you're away. Set a schedule that turns on the heater in those cold winter evenings, power on your coffee maker in the morning before you wake up, or automatically turn on your living room lamp while you're on holiday. Forgotten to turn off the iron after you've left the house, no need to panic, turn it off remotely from with a few taps on your smartphone. The free mydlink app works with iPhone, iPad, and Android devices to allow you to remotely switch your control the appliances on or off from your mobile device and manage your power schedules while on the go.

Smart Home Compatible

Turn your Wi-Fi Smart Plug on or off with the sound of your voice! Experience the hands-free control and convenience of Amazon Echo and Google Home (sold separately) to easily turn on lights when your hands are full, or turn off the fan as you leave the room. Why not make your home smarter by setting up home automation with compatible mydlink Smart Home devices¹ and IFTTT. Turn a light on automatically when motion is detected or when the sun goes down.

Compact Design

The Wi-Fi Smart Plug is designed to fit discreetly into any home. The visual light ring around the device lets you quickly see the whether it's on or off. It also works as a night light to guide you when it's dark. In case it becomes bothersome, you also have the option to turn it off at any time at the press of a button. You can also turn it on and off with the physical button without the need to use the mydlink app.

Features

- ◆ Turn an appliance on and off from your smartphone or tablet, at home or away
- ◆ Schedule appliances such as lamp or heater to automatically turn on and off based on time and date
- ◆ Set up smart home automation with compatible mydlink Smart Home devices¹ and IFTTT
- ◆ Can be controlled by voice through Amazon Echo and Google Home smart speakers
- ◆ Push notification alerts when it is turned on or off
- ◆ Connects to your home's existing Wi-Fi network

Easy to Set Up

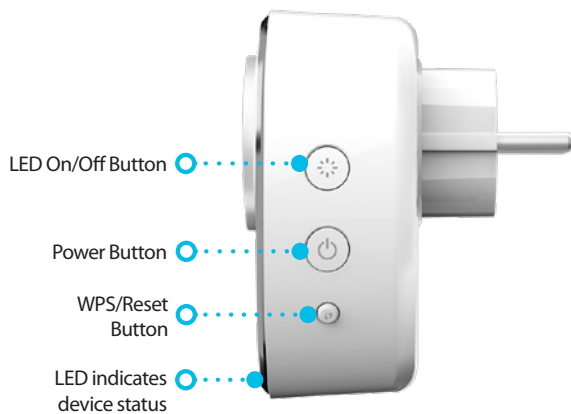
With the mydlink app, you can set up the Wi-Fi Smart Plug in a matter of minutes. It connects to your home's existing Wi-Fi network with a simple press of a button. Step-by-step instructions help you to securely add it to your personal mydlink account, so you can set schedules and automate your appliance straight away.

Get Instant Notifications Wherever You Are

You even set up instant alerts through the mydlink app to notify you when the Wi-Fi Smart Plug is switched on or off. Giving you additional peace of mind in case something unexpectedly left on or off.

Product Image

Side View



Front View



Technical Specifications

General

Standards	• IEEE 802.11n ²	
Security	• WPA/WPA2	• WEP
LED	• Power/WPS	
Antennas	• One internal antenna	
Buttons	• LED on/off • Power button	• WPS/Reset button

Functionality

Support Functions	• Smart remote control • Automation	• Power scheduling • System LED control
Advanced Features	• mydlink app for iPhone, iPad, and Android devices	
App Compatibility	• Please refer to the mobile app's store page to check your device's compatibility	

Physical		
Dimensions	• 95 x 74 x 38 mm (3.74 x 2.91 x 1.50 inches)	
Weight	• 155 grams (5.47 ounces)	
Power Input	• Input: 100 to 240 V AC, 50/60 Hz	
Maximum Load	<ul style="list-style-type: none"> • EU plug (type F): 3680 W / 16 A • French plug (type E): 3680 W / 16 A 	<ul style="list-style-type: none"> • UK plug (type G): 3120 W / 13.5 A • Swiss plug (type J): 2400 W / 10 A
Power Consumption	• Maximum 5 watts	
Temperature	• Operating: 0 to 40 °C (32 to 104 °F)	• Storage: -20 to 65 °C (-4 to 149 °F)
Humidity	• Operating: 10% to 90% non-condensing	• Storage: 5% to 95% non-condensing
Certifications	• CE/LVD/ErP	• RoHS

¹ Please visit www.dlink.com for more information on mydlink products that support Smart Home functionality.

² Maximum wireless signal rate derived from IEEE standard 802.11n specifications. Actual data throughput will vary. Network conditions and environmental factors, including volume of network traffic, building materials and construction, and network overhead, lower actual data throughput rate. Environmental factors will adversely affect wireless signal range.



For more information: www.dlink.com



Updated December 2017