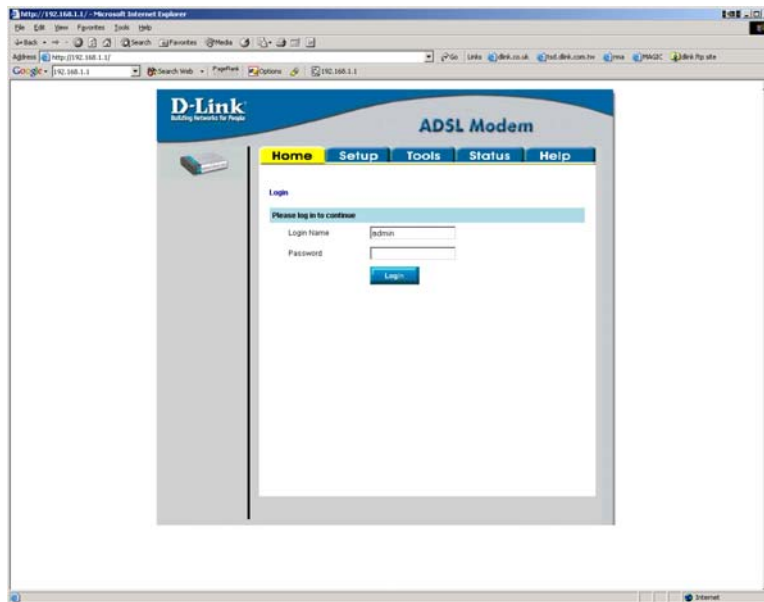


How to Firmware update

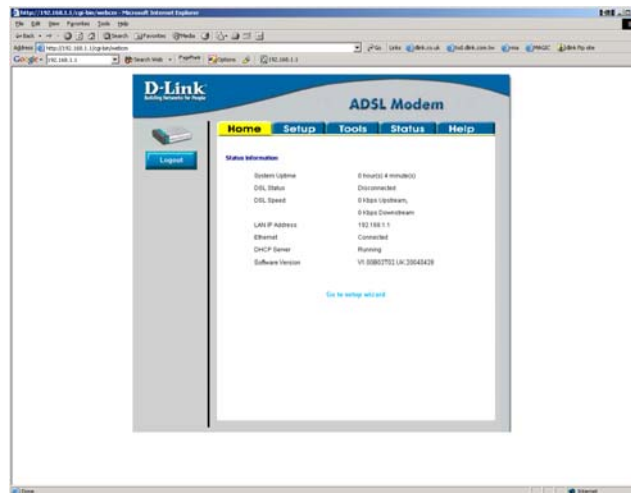
DSL-300T F/W-V1.00B02T02.UK.20040428

Please Unplug your ADSL cable from the router before upgrading the firmware.

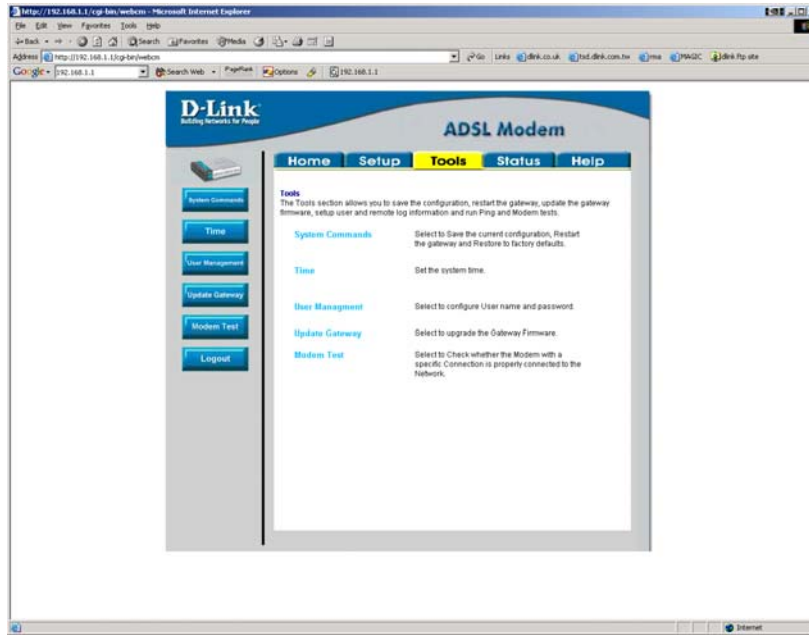


Login into the unit using the Default Username and password of admin and admin respectively
Click On Login

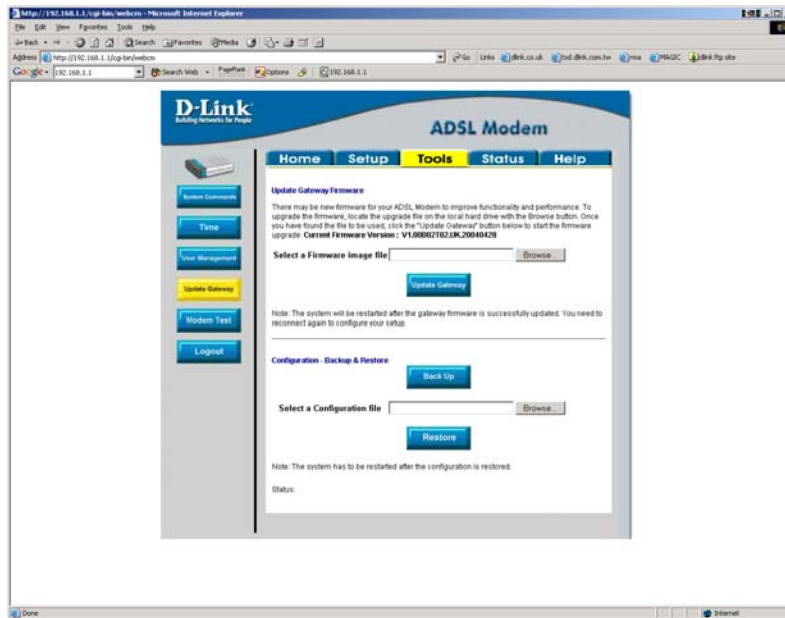
The below screen will be displayed.



Click on tools



Then select Update gateway. And you will get the below screen



Click on browse under the update gateway firmware.

In the folder where the zip file is expanded you will get option for 2 files

- 1) Fs file
- 2) Kernel File

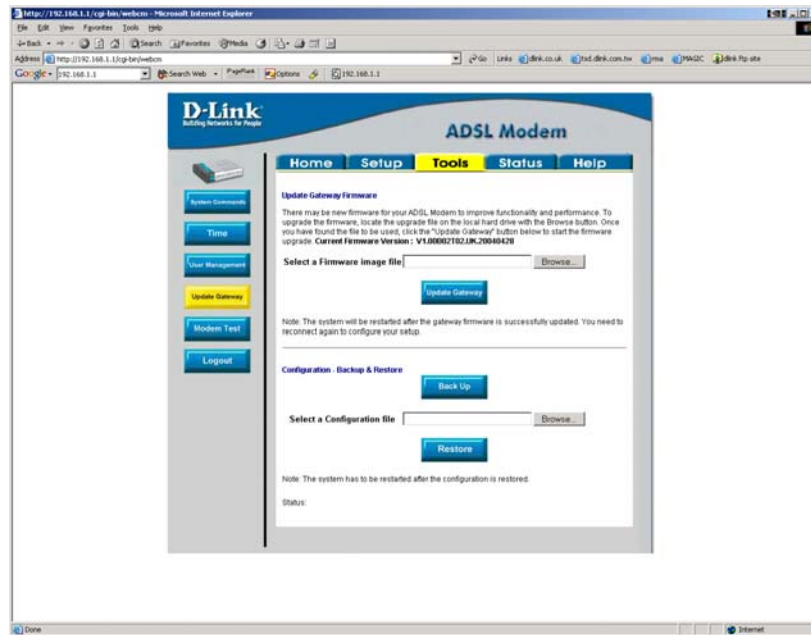
Select The FS file then click on update gateway. It will start copying the files across.

Once the file has gone through and the unit has rebooted login again

You now need to send the kernel file through

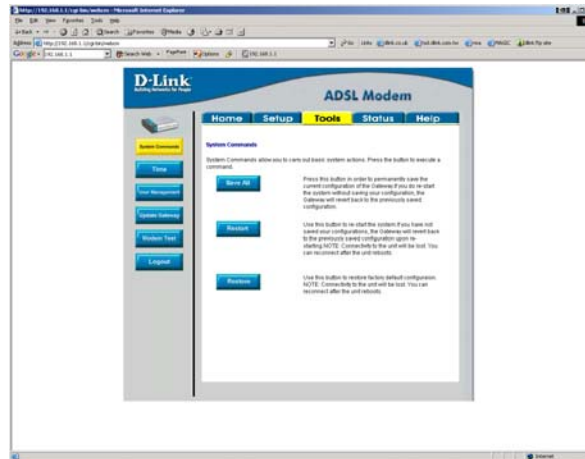
Once the upgrade has finished the unit will reboot.

Once the unit has been rebooted and you are logged in go to Tools and update gateway.



The current firmware version should now show the new version of the firmware.

Then go to tools system commands and perform a restore, to factory reset.



Then you can configure the router as per your requirements. Once everything is configured plug in the adsl line.