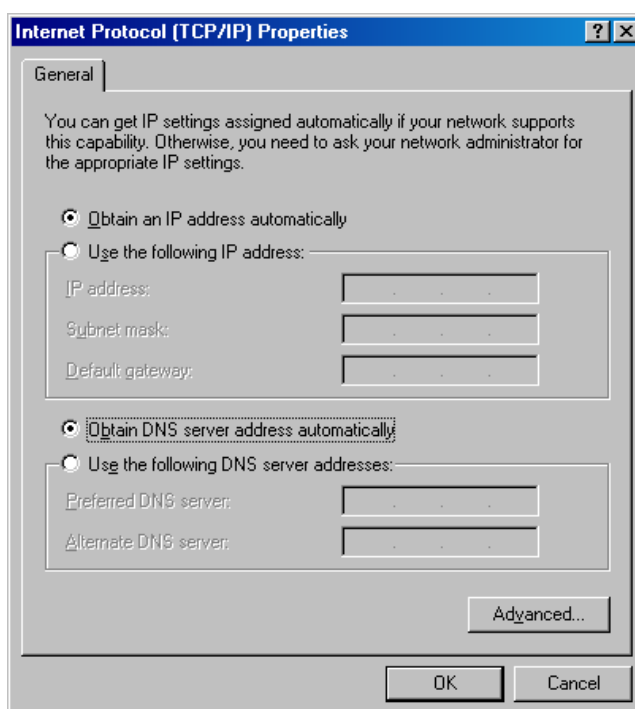


## DI-304 Installation Guide for LAN – LAN Setup

To configure the router for LAN – LAN, follow the screens setting below.

The router has a default IP address of 192.168.0.1, and is setup as a DHCP server. The PC you will use to configure the DI-304 will need to be setup to receive its IP address from a DHCP server.

In the TCP/IP properties of your Ethernet adapter, configure it so that the IP address is obtained automatically.



## Router Main Menu

To configure the router, in your WEB browser type the IP address of the router, this will be 192.168.0.1

Select LAN-LAN Dialer Profile Setup

Index	Name	Status	Index	Name	Status
1.	di206	v	9.	???	x
2.	???	x	10.	???	x
3.	???	x	11.	???	x
4.	???	x	12.	???	x
5.	???	x	13.	???	x
6.	???	x	14.	???	x
7.	???	x	15.	???	x
8.	???	x	16.	???	x

You can setup 16 LAN-LAN profiles, that is to say you can connect to 16 remote networks. Select an available index.

Give an appropriate name for the profile, and enable it.

Enter the dial out username and password.

If the other router dial this site, then complete the din-in settings.

For unnumbered link leave my WAN IP as 0.0.0.0. The remote gateway in the IP address of the remote router. Enter the remote network and mask.

1. Common Settings

Profile Name: di206  
Call Direction: Both  
Idle Timeout: 30 second(s)

2. Dial-Out Settings

Username: dell  
Password: \*\*\*\*  
Dial Number: 02082051431  
Link Type: 64k bps  
PPP Authentication: PAP/CHAP  
VJ Compression: On  
Callback Function (CBCP):  
Require Remote to Callback:   
Provide ISDN Number to Remote:

3. Dial-In Settings

Username: elonex  
Password: \*\*\*\*  
Enable CLID Authentication:   
Peer ISDN Number:   
Link Type: 64k bps  
PPP Authentication: PAP/CHAP  
VJ Compression: On  
Callback Function (CBCP):  
Enable Callback Function:   
Use the Following Number to Callback:   
Callback Number:   
Callback Budget: 0 minute(s)

4. TCP/IP Network Settings

My WAN IP: 0.0.0.0  
Remote Gateway IP: 192.168.100.1  
Remote Network IP: 192.168.100.0  
Remote Network Mask: 255.255.255.0  
RIP Direction: TX/RX Both  
RIP Version: Ver. 2  
For NAT operation, treat remote sub-net as: Private IP

Select call direction and idle timeout.

Select 64, 128 or BOD for this connection, and authentication for the dial out settings

Setup the parameters for dial in.

These setting may be left as default.

~ End of Document ~