

Package Contents:

- D-Link *AirPlus* DWL-650+ Wireless Cardbus Adapter
- Printed Quick Installation Guide
- CD with Manual, Quick Installation Guide and Drivers



If any of the contents are missing, please contact the reseller.

System Requirements

- A laptop computer with an available 32-bit Cardbus slot
- At least a 300 MHz processor and 32 MB of memory
- Cardbus Controller properly installed and working in the laptop computer
- An 802.11b Access Point (for Infrastructure Mode) or another 802.11b wireless adapter (for Ad-Hoc; Peer-to-Peer networking mode.)



Installing the DWL-650+ Drivers & Utility

NOTE: Do NOT insert the DWL-650+ Cardbus into the Cardbus slot before running the install driver CD!

Windows XP, 2000, Me, or 98 Installation

The following screen shots are taken from Windows XP. Windows 2000, Me, and 98 will have a similar screen installing the drivers.

- Turn on the laptop computer.
- Insert the D-Link *AirPlus* DWL-650+ Driver CD into the CD-ROM Drive.



Fig. 1.1

- Click on the **Install Driver/PC Utility** bullet point indicated on Fig. 1.1.
- If the Autorun function on your laptop computer does not automatically start, proceed to the steps below. If it does, proceed to Section 2.

Go to **Start > Run > type D:\Setup.exe** then click **OK**

NOTE: The letter “D” represents the letter of the CD-ROM drive. Your CD-ROM drive may be a different drive letter.

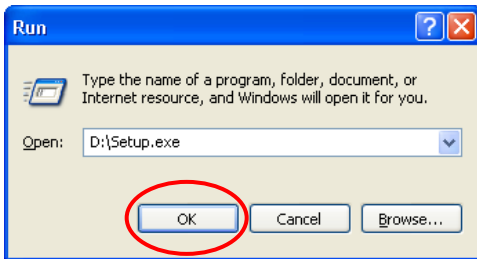


Fig. 1.2. XP setup screen. The Windows 2000, Me, and 98 screen will look similar to Fig 1.2.

2

Installing the Drivers & Utility (continued)

- Click **Next**

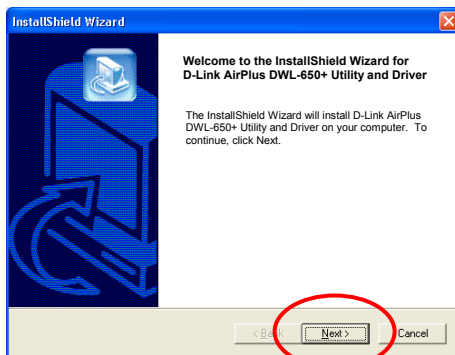


Fig. 2.1

- Click **Next** to install the Utility program in the default folder.

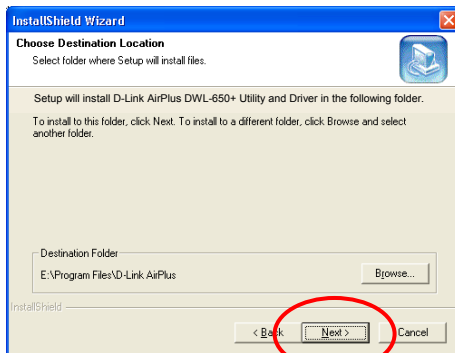


Fig. 2.2

- Select **“No, I will restart my computer later.”**
- Click **Finish**.

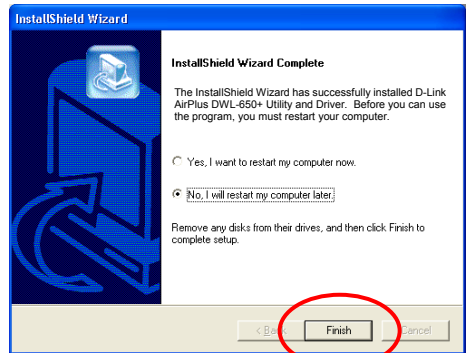


Fig. 2.3

- Shut down your laptop computer.
- Insert the DWL-650+ into the Cardbus slot.
- Restart your laptop computer.
- When you restart your laptop computer, the driver installation will be finalized.

Select **“Install the software automatically (Recommended)”** (Fig. 2.4)

Click **Next**



Fig. 2.4

For Windows XP, Fig. 2.5 may appear after the laptop computer restarts. Click **Continue Anyway** to finalize the installation. (D-Link software is currently undergoing Windows Logo testing. Microsoft certification is pending.)

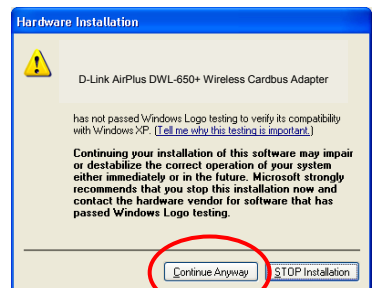


Fig. 2.5

For Windows 2000, Fig. 2.6 may appear after the laptop computer restarts. Select **Yes** to finalize the installation.

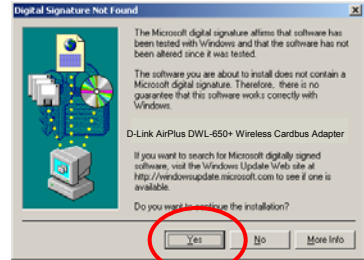


Fig. 2.6

For Windows Me and 98, after the laptop computer restarts, it will ask you to reboot the computer once more to finalize the driver installation. Select **Yes** to finalize the installation.

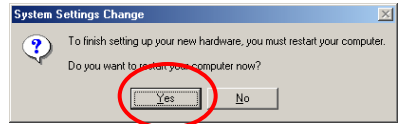


Fig. 2.7

3 Configuring the DWL-650+

After the computer restarts, the configuration utility will automatically start and utility icon will appear in the bottom right hand corner of the screen (systray).

- **Double-click** to use the configuration utility icon (Fig. 3.1) shown on the right.



Fig. 3.1

Note: If the utility icon does not appear, double-click on the shortcut icon (Fig. 3.2) that has been created on your desktop workspace.



Fig. 3.2

Out of the box, the default settings for the DWL-650+ will associate with D-Link Air / AirPlus wireless routers and access points. (e.g. DI-713P, DI-714, DWL-900AP, DWL-1000AP)

After double-clicking on the icon (Fig. 3.1), the D-Link AirPlus DWL-650+ Utility window will appear.

By default, it will take you to the **Link Info** section. Here, it will display the following:

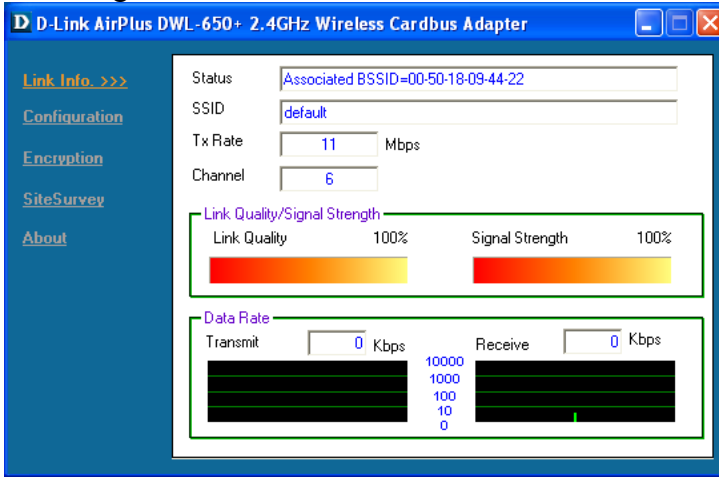


Fig. 3.3 This screen shot will be the same for all Windows operating system

Status: Displays the MAC Address of the Access Point that is associated with the DWL-650+.

SSID: The Service Set Identifier is the name assigned to the wireless network. The factory SSID setting is set to **default**.

TxRate: The factory setting is set to 11 Mbps; however, TxRate settings are automatically determined by the DWL-650+ depending on the distance from the access point.

Channel: Displays the channel information. By default, the channel is set to **6** and selection is automatically determined by the DWL-650+.

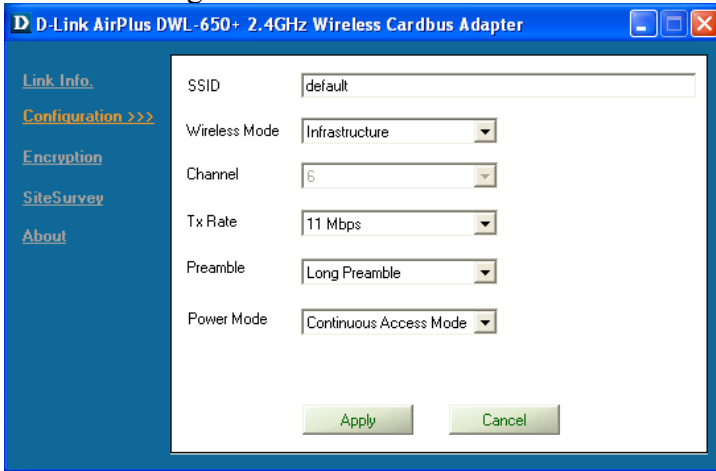
Link Quality / Signal Strength: Displays the Link Quality for the DWL-650+ wireless connection to the access point. The Signal Strength represents the wireless signal between the access point and the DWL-650+. The percentage coincides with the graphical bar.

Data Rate: Graphically displays the statistics of data transmitted and received.

4

Making changes to the DWL-650+'s factory settings

By clicking on the Configuration menu, changes can be made to the default wireless settings of the DWL-650+.



SSID: The Service Set Identifier is the name assigned to the wireless network. The factory SSID setting is set to **default**. Make changes here to match the SSID on existing Wireless Router or Access Point.

Wireless Mode: The factory setting is set to **Infrastructure**. Ad-Hoc mode is used for peer-to-peer networking.

Channel: By default, the channel is set to **6**. Channel selection is automatically determined by the DWL-650+ depending on the channel setting of the access point selected for association. To change the channel settings, the **Wireless Mode** must be set to **Ad-hoc**.

TxRate: (Transmission Rate) The factory setting is set to 11 Mbps; however, TxRate settings are automatically determined by the DWL-650+ depending on the distance from the access point.

Preamble: By default, D-Link Air Products are set to **Long Preamble**. The Preamble defines the length of the CRC block (Cyclic Redundancy Check is a

common technique for detecting data transmission errors) for communication between the Access Point and the roaming wireless network adapters. High network traffic areas should use the shorter preamble type.

Note: The preamble setting of the DWL-650+ must match the preamble setting of the Wireless Router or Access Point in order to communicate on the network.

Power Mode: By default, Power Mode is set to Continuous Access Mode. Continuous Access Mode-this default setting consumes the most power. Maximum Power Save-this setting consumes the least power. Power Save- this setting consumes a moderate amount of power.

5

You have completed the Driver Installation

Proceed to Section 6 for instructions on how to connect to a network.

6

Connecting to a Network

To connect to a network, make sure the proper network settings are configured for DWL-650+.

For Windows XP users: (Fig.6.1)

Go to **Start > right click on My Network Places > select Properties > Double click on the Wireless Network Connection associated with the DWL-650+ > select Properties > select Internet Protocol (TCP/IP) > click Properties**

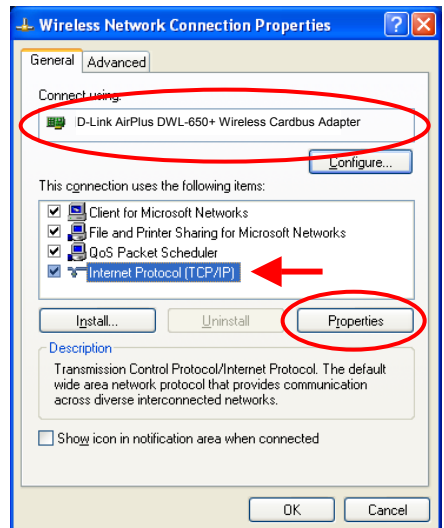


Fig. 6.1

Setup for wireless router or Access Point using DHCP server. (Fig.6.2)

Select **Obtain an IP address automatically** - if the Wireless Router or Access Point has DHCP server enabled

Select **Obtain DNS server address automatically**.

Click **OK**

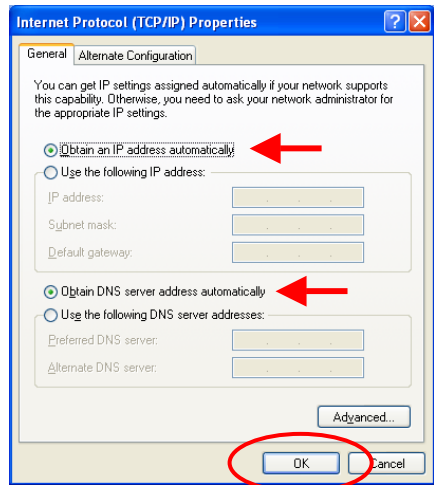


Fig. 6.2

Setup for wireless router or Access Point using static IP address. (Fig.6.3)

Select **Use the following IP address** - if the Wireless Router or Access Point does not have DHCP server enabled

Input a static IP address on the same network, which will correspond with the Wireless Router or Access Point.

IP address: **192.168.0.51**

Subnet mask: **255.255.255.0**

Your Internet service provider provides preferred DNS server information.

Click **OK**

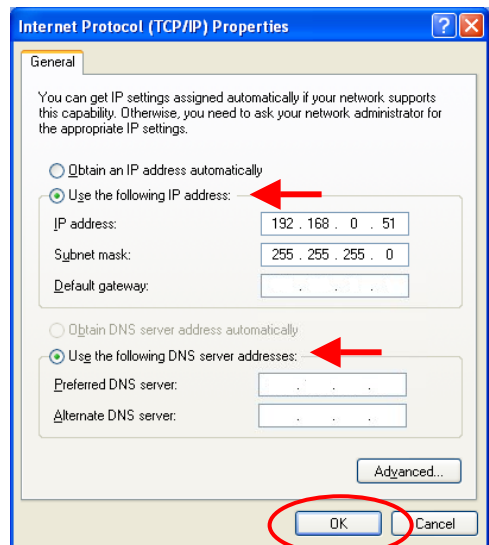


Fig. 6.3

For Windows 2000 users: (Fig.6.4)

Go to **Start > Settings > Network and Dial-up Connections > Double click on the Local Area Connection associated with the DWL-650+ > select Properties> select Internet Protocol (TCP/IP) > click Properties**

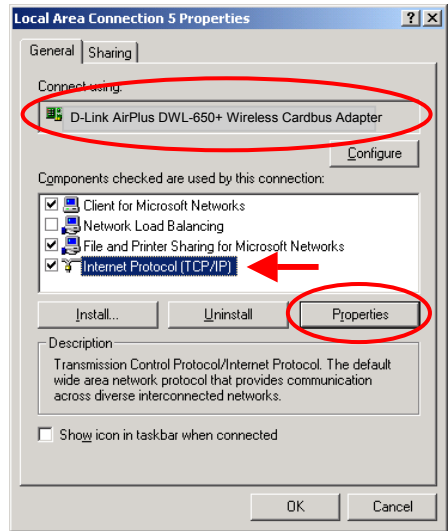


Fig. 6.4

Setup for wireless router or Access Point using DHCP server. (Fig.6.5)

Select **Obtain an IP address automatically.**

Select **Obtain DNS server address automatically.**

Click **OK**

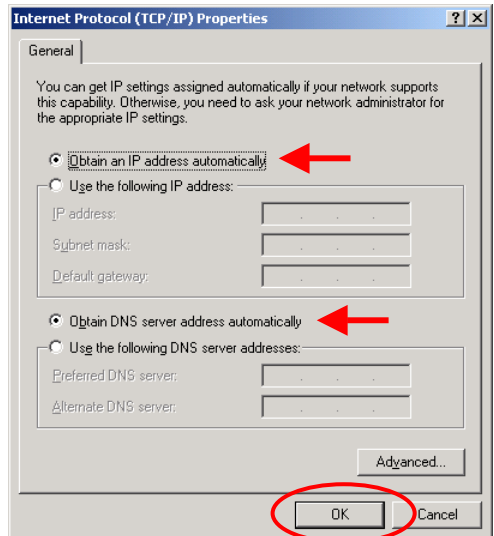


Fig. 6.5

Setup for wireless router or Access Point using static IP address. (Fig.6.6)

Select Use the following IP address

Input a static IP address on the same network, which will correspond with the wireless router or access point.

IP address: **192.168.0.51**

Subnet mask: **255.255.255.0**

Your Internet service provider provides preferred DNS server information.

Click **OK**

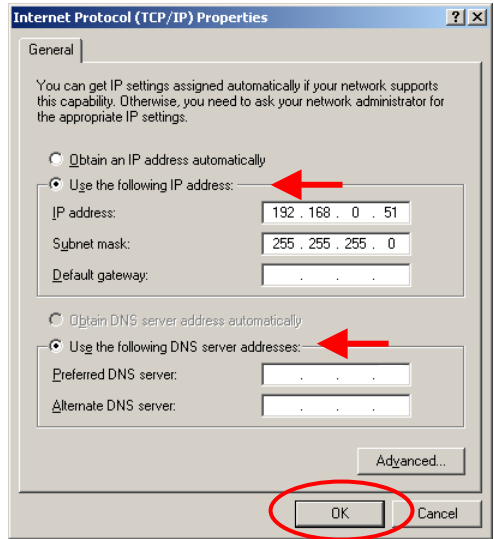


Fig 6.6

For Windows Me and 98 users: (Fig.6.7)

Go to **Start > Settings > Control Panel > Double click on Network** associated with the DWL-650+ > click **Properties** > select **Internet Protocol (TCP/IP)** > click **Properties**

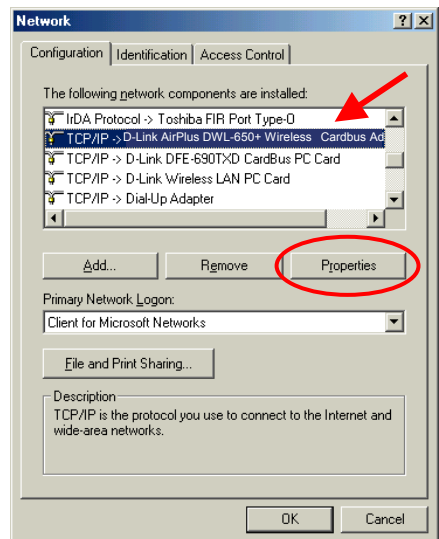


Fig. 6.7

Setup for wireless router or Access Point using DHCP server. (Fig.6.8)

Select **IP Address** tab. Then, select **Obtain an IP address automatically**.

Select **Detect connection to network media**.

Click **OK**

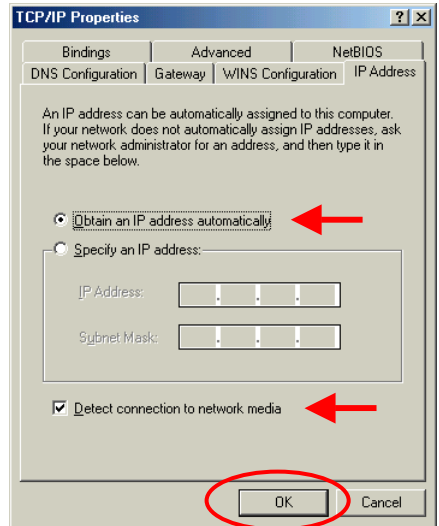


Fig. 6.8

Setup for wireless router or Access Point using static IP address. (Fig.6.9)

Select **Specify an IP address**

Input a static IP address on the same network, which will correspond with the wireless router or access point.

IP address: **192.168.0.51**

Subnet mask: **255.255.255.0**

Select **Detect connection to network media**.

Click **OK**

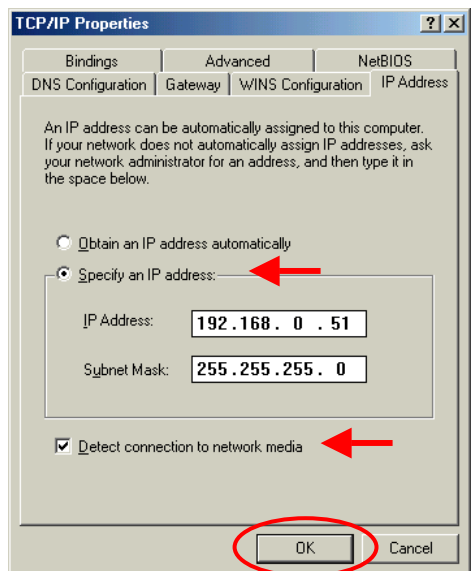


Fig. 6.9

Checking Wireless Connection

For Windows XP and 2000

Go to **Start > Run > type cmd**. A window similar to Fig. 6.10 will appear. Type **ping xxx.xxx.xxx.xxx**, where xxx is the IP address of the wireless router or Access Point. A good wireless will show the reply from the wireless router or access point.

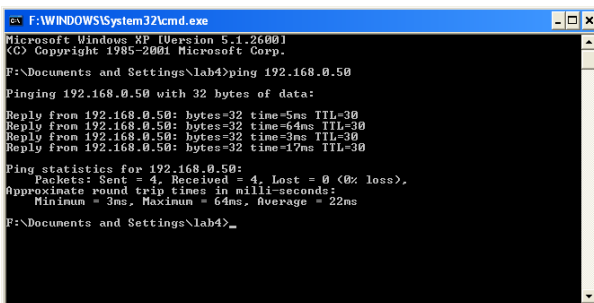


Fig. 6.10

For Windows Me and 98

Go to **Start > Run > type command**. A window similar to Fig. 6.11 will appear. Type **ping xxx.xxx.xxx.xxx**, where xxx is the IP address of the Wireless Router or Access Point. A good wireless will show the reply from the wireless router or access point.

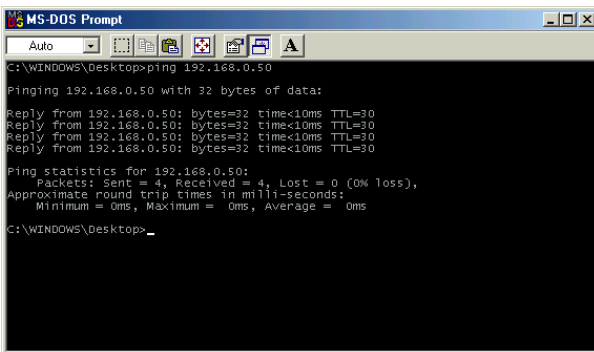


Fig. 6.11

For detailed explanation on Ad-Hoc, Infrastructure mode, Basics of networking, file-sharing and troubleshooting, please refer to the DWL-650+ Manual on the CD included with the product.

Troubleshooting

- **Q: I cannot connect to the access point or wireless router.**
A: Make sure that the SSID on the DWL-650+ Cardbus adapter is exactly the same as the SSID on the Access Point or wireless router.
- **Q: The DWL-650+ Power and Link lights are not on.**
A: Check to see if the DWL-650+ Cardbus adapter is firmly inserted into a PC Cardbus slot.
- **Q: I am unable to access the Internet using the DWL-650+.**
A1: Check that the LED indicators for the broadband modem are indicating normal activity. If not, there may be a problem with the broadband connection.
A2: Check that the LED indicators on the wireless router are functioning properly. If not, check that the AC power and Ethernet cables are firmly connected.
A3: Check that the IP address, subnet mask, gateway, and DNS settings are correctly entered for the network.
- **Q: I forgot my Encryption key.**
A: Reset the Access Point to its factory default settings and restore the DWL-650+ Wireless Cardbus Adapter to the factory default settings.

Technical Support

Thank you for purchasing D-Link *AirPlus* DWL-650+. For any questions or assistance using the DWL-650+, please feel free to contact technical support.

The most recent software and documentation are available on the **D-Link** website. D-Link provides free technical support for customers within the United States during the warranty period on this product. U.S. customers can contact D-Link Technical Support through our web site, or by phone.

D-Link Technical Support over Telephone:

(800) 758-5489

24 hours a day, seven days a week.

D-Link Technical Support over the Internet:

<http://support.dlink.com>

