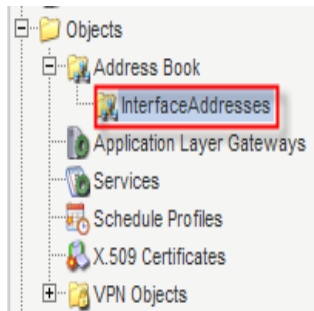
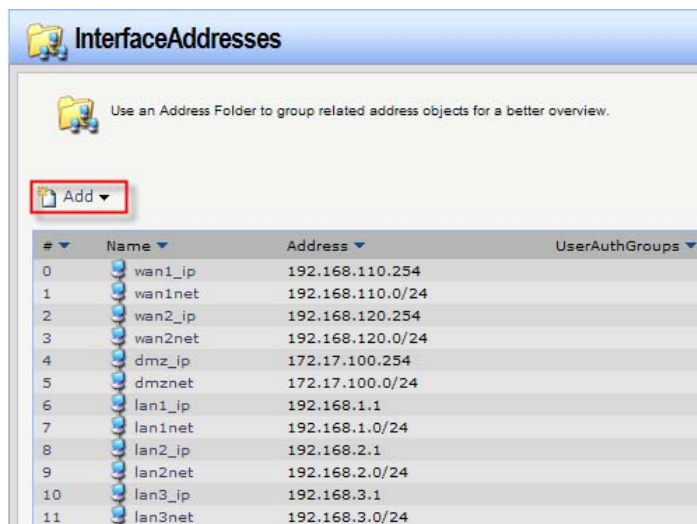


WAN with static IP

Click “address book” under “Object

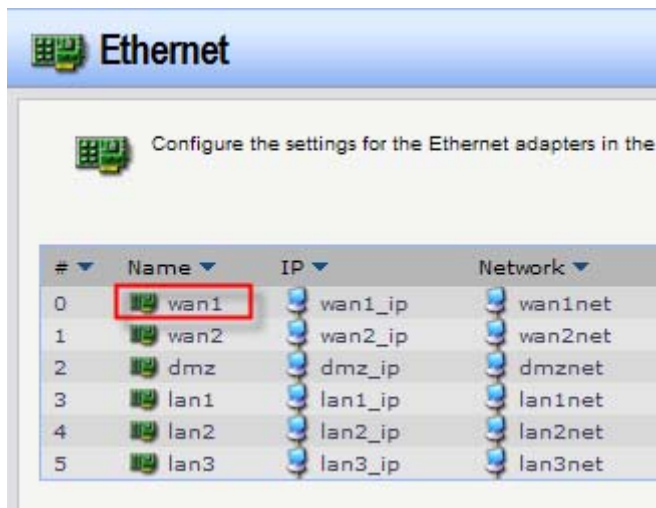
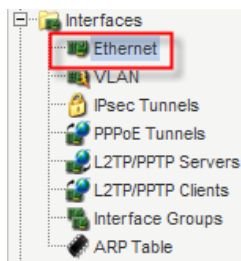


Add an object for IP4 Host/Network

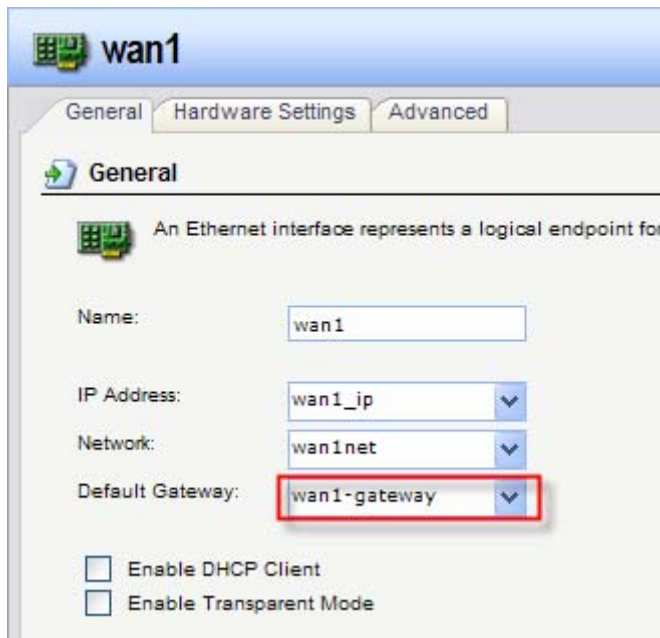


Verify the IP addresses of wan1_ip and wan1net

Click “Ethernet” under “Interfaces”



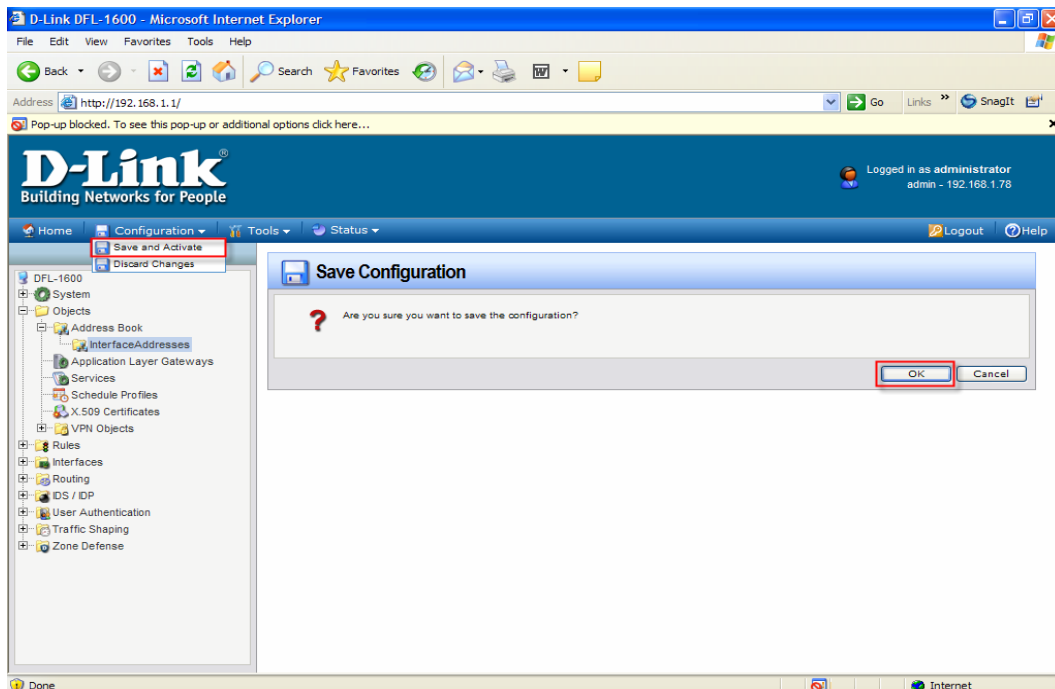
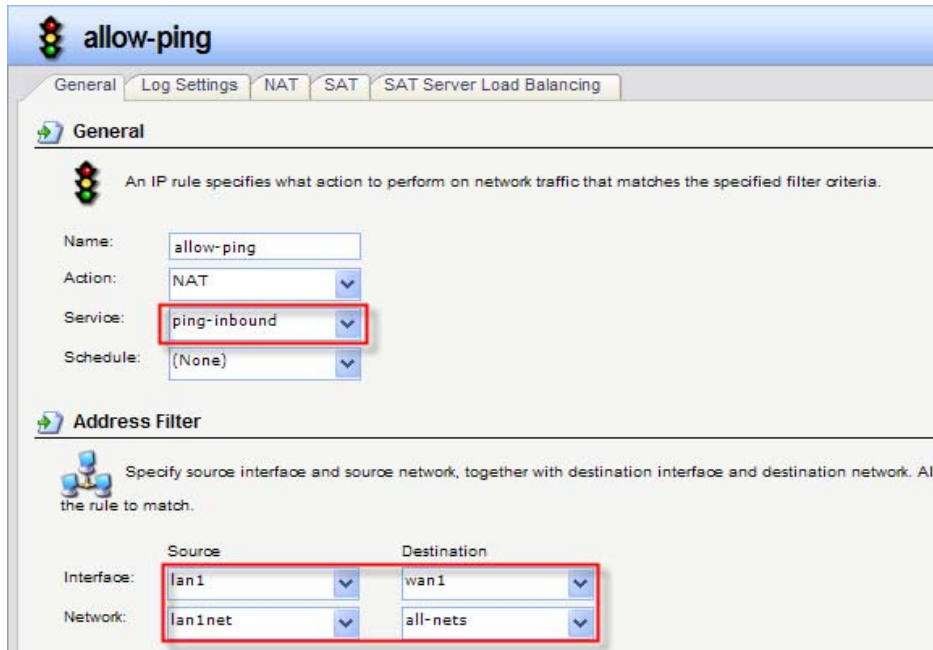
Add the gateway object for “Default Gateway”



Click “IP rules” under “Rules”



Choose the correct Action,Service,Interface and Network for the rule



Click “Save and Active”