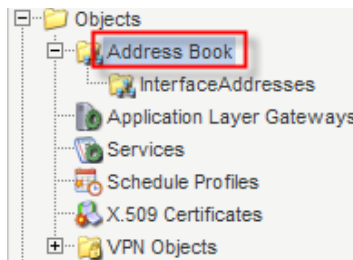
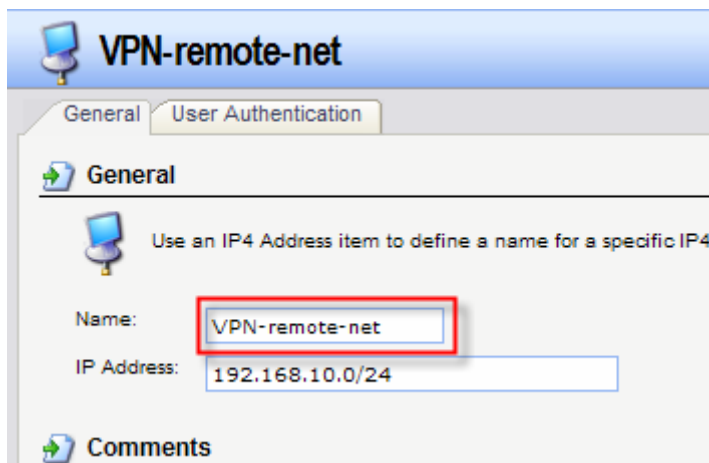


How to create an IPSEC tunnel for roaming users

Start with setting up the Objects for this tunnel.

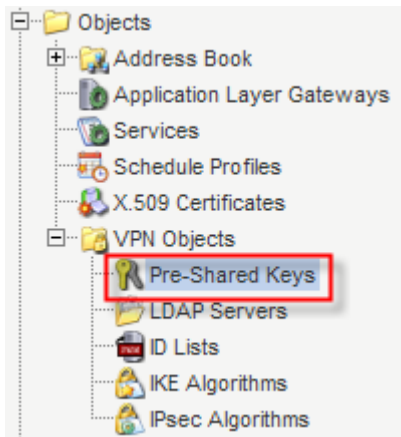


- Key in the correspond IP address



This value is for the virtual net which will be used on the vpn client

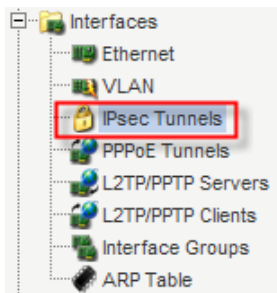
- Click “Pre-Share Keys ” in VPN Objects



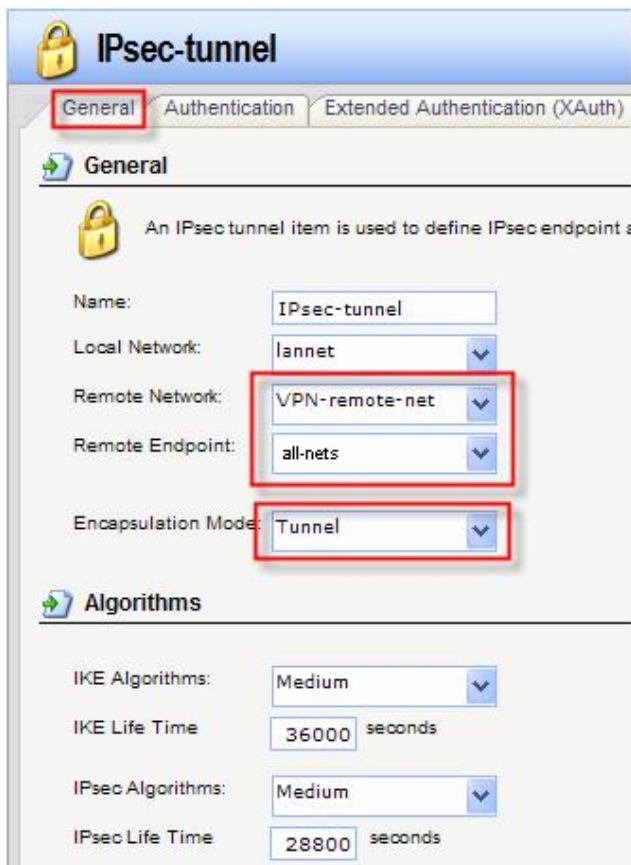
- Key in the wanted values

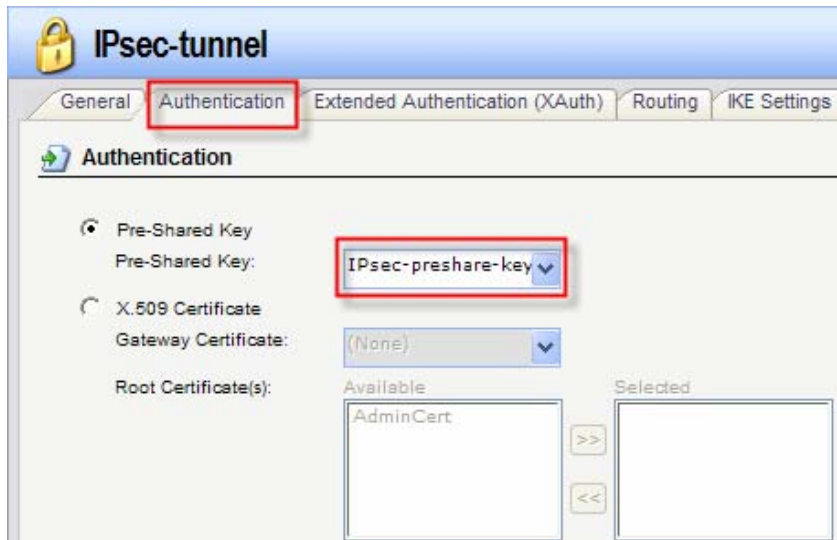
A screenshot of the 'IPsec-preshare-key' configuration page. The page has a blue header with a key icon and the title 'IPsec-preshare-key'. Below the header is a 'General' section with a key icon and a description: 'PSK (Pre-Shared Key) authentication is based on a shared secret that is known only by the'. The 'Name' field contains 'IPsec-preshare-key'. Below is a 'Shared Secret' section with two radio buttons: 'Passphrase' (selected) and 'Hexadecimal Key'. The 'Passphrase' section has two input fields: 'Shared Secret' and 'Confirm Secret', both containing seven dots. A red rectangle highlights these two input fields. Below the 'Hexadecimal Key' section is a 'Passphrase' input field and a 'Generate Random Key' button.

- Click “IPsec Tunnels” in Interface



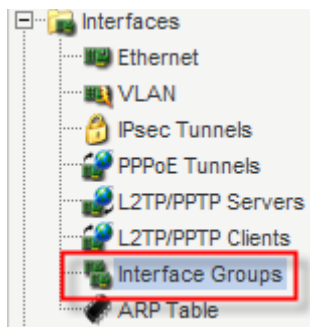
Choose the correspond configuration



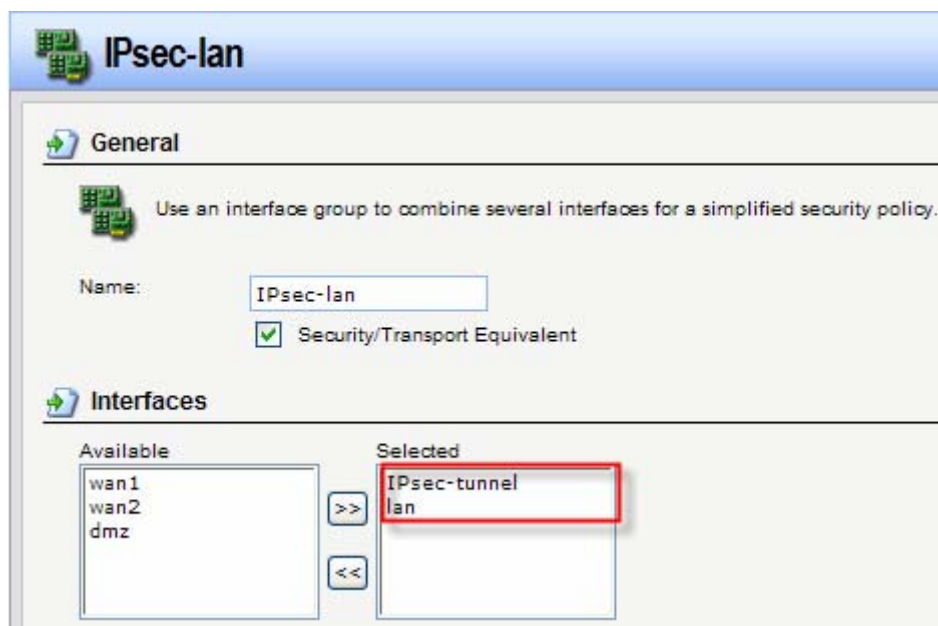


To make it easier we suggest you create an interface group so that you don't have to create that many policies.

- Click "Interface Groups" in this Interface



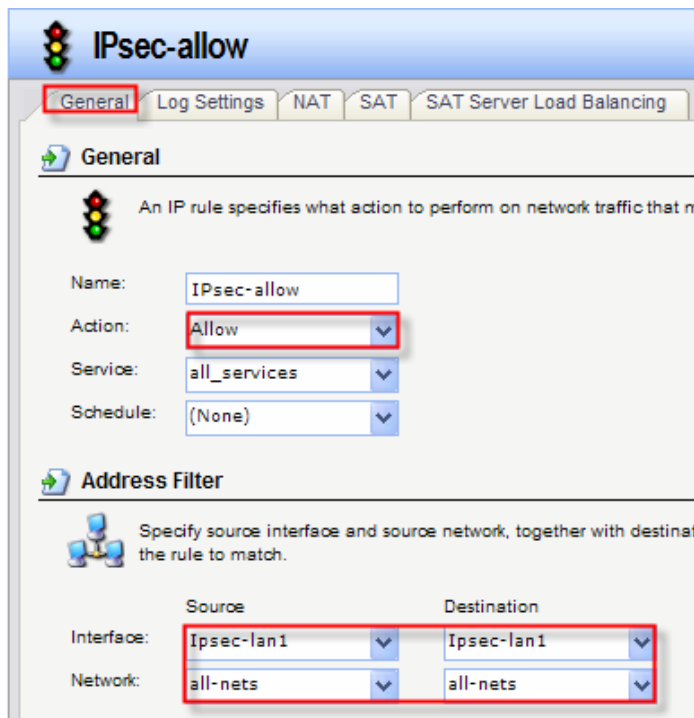
Choose the correspond interfaces



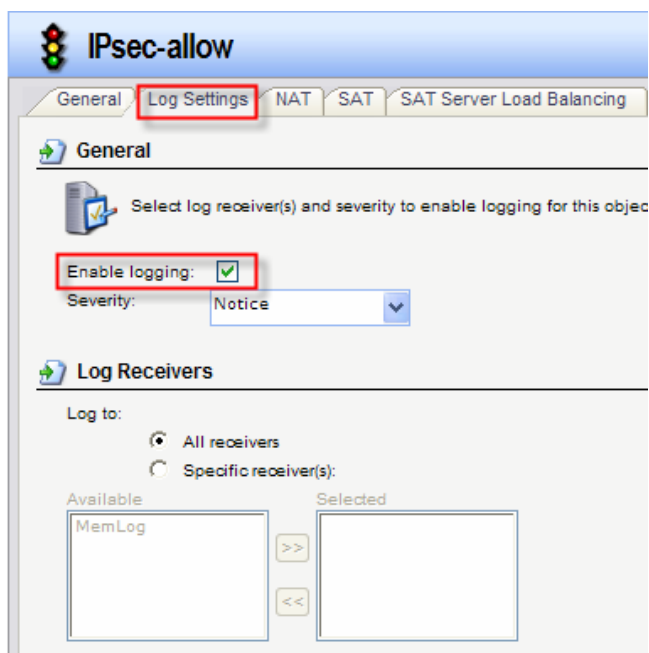
- Click “IP Rules” in Rules



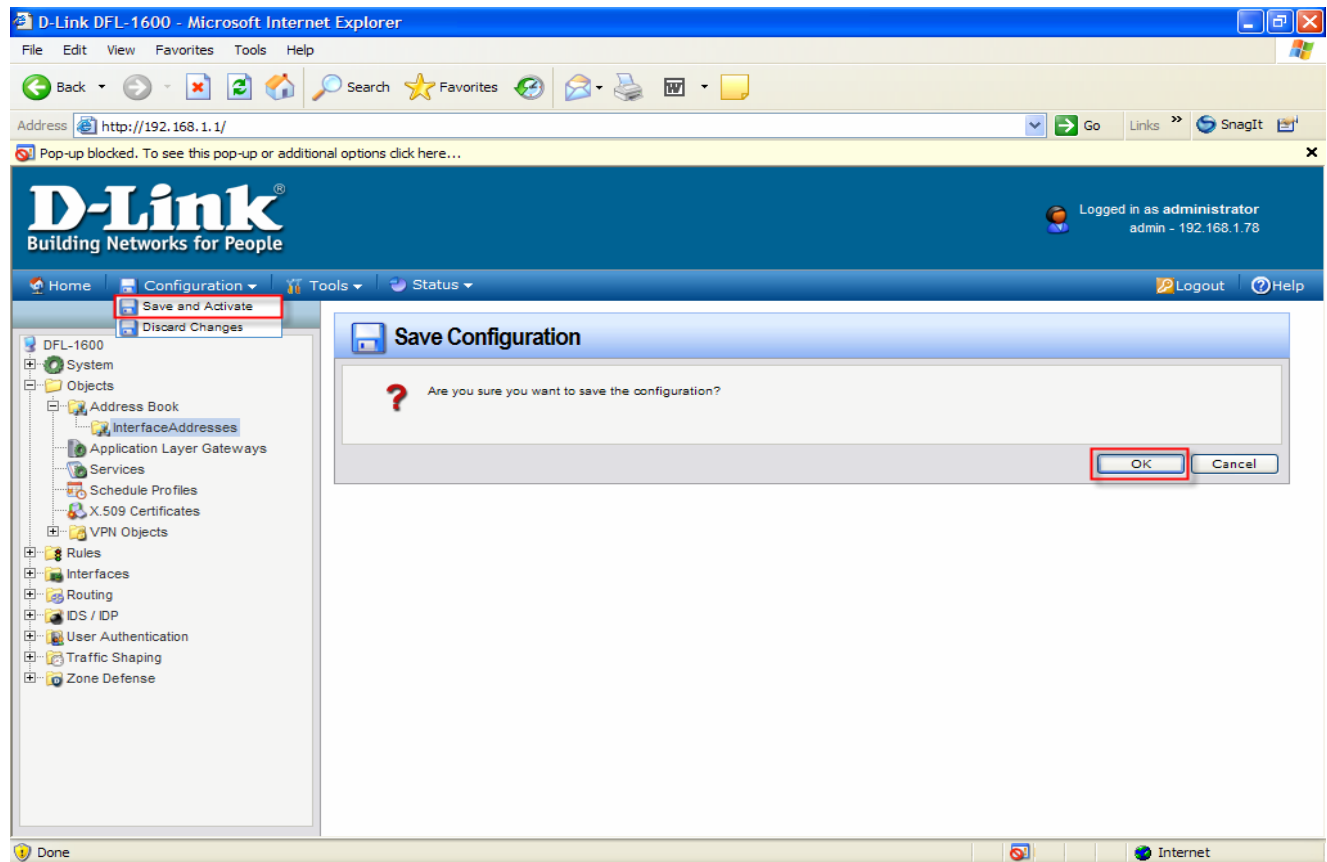
- Choose correspond configuration



- Enable Log setting

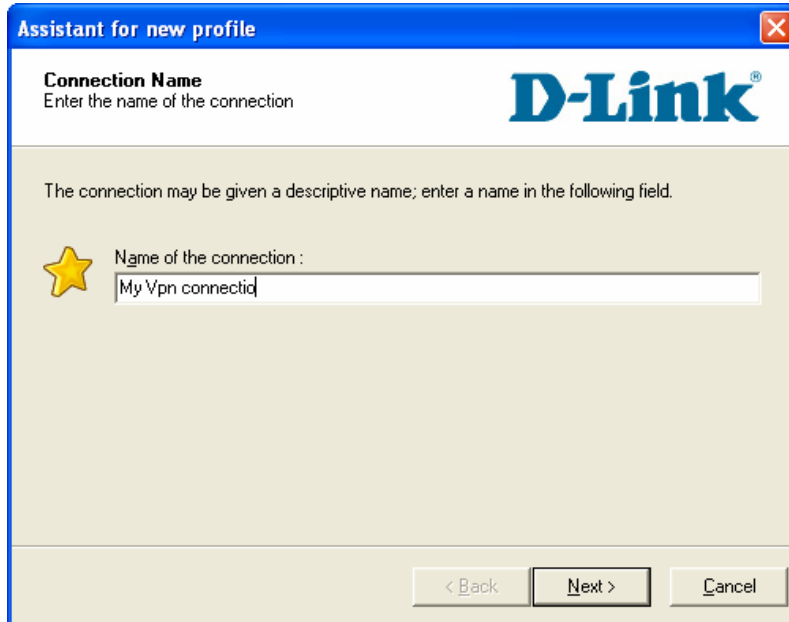


- After all configuration , Click “configuration” on main menu bar
- Click “Save and Activate”



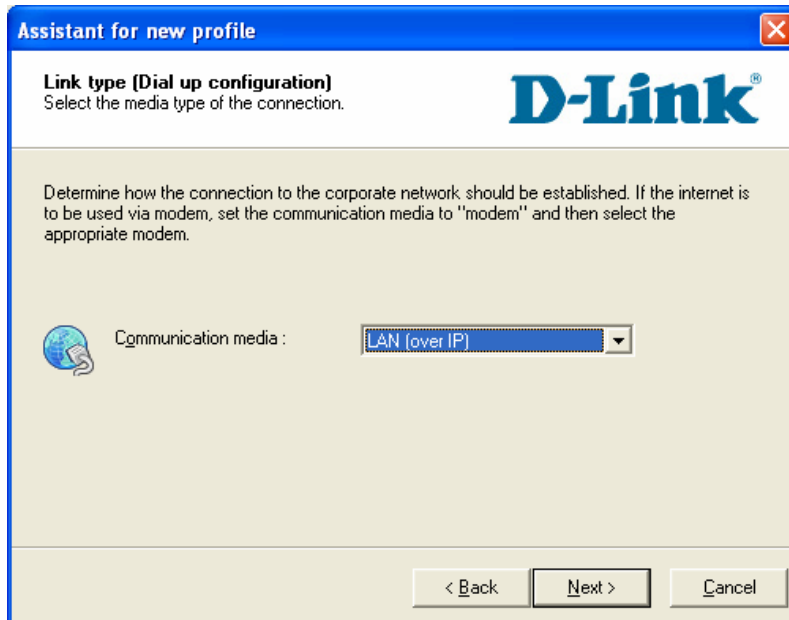
How to configure the D-link NetDefend client

Start the software and go to configuration and profile settings where you click on New Entry.



The screenshot shows a window titled "Assistant for new profile" with a close button in the top right corner. The window has a blue header bar. Below the header, the text "Connection Name" is displayed in bold, followed by the instruction "Enter the name of the connection". The D-Link logo is visible in the top right. A yellow star icon is positioned to the left of the text "Name of the connection:". Below this text is a text input field containing the text "My Vpn connecti". At the bottom of the window, there are three buttons: "< Back", "Next >", and "Cancel".

Select the communication media used.



The screenshot shows a window titled "Assistant for new profile" with a close button in the top right corner. The window has a blue header bar. Below the header, the text "Link type (Dial up configuration)" is displayed in bold, followed by the instruction "Select the media type of the connection". The D-Link logo is visible in the top right. A globe icon is positioned to the left of the text "Communication media:". Below this text is a dropdown menu with "LAN (over IP)" selected. At the bottom of the window, there are three buttons: "< Back", "Next >", and "Cancel".

Key in the public ip for the remote vpn server

Assistant for new profile ✖

VPN gateway parameters
To which VPN gateway should the connection be established **D-Link®**

Enter the DNS name (i.e. vpnserver.domain.com) or the official IP address (i.e. 212.10.17.29) of the VPN gateway you want to connect to.
Using Extended Authentication (XAUTH) you can enter the Username and Password for the authentication. If no authentication data are entered they will be requested when establishing the connection.

 Gateway :

Use extended authentication (XAUTH) _____

 Username :

Password : Password (Confirm) :


Choose the Pre shared key you have chosen for this connection

Assistant for new profile ✖


Pre-shared key
Common secret for data encryption **D-Link®**

A shared secret or pre-shared key is used to encrypt the connection; this then needs to be identically configured on both sides (VPN client and VPN gateway).

Enter the appropriate value for the IKE ID according to the selected ID type.

 Pre-shared key _____

Shared secret : Confirm secret :

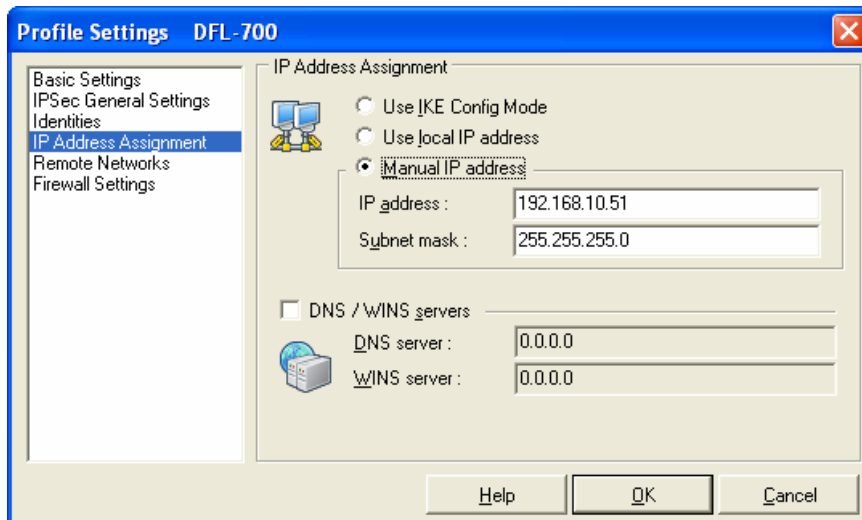
 Local identity _____

Type : ▼

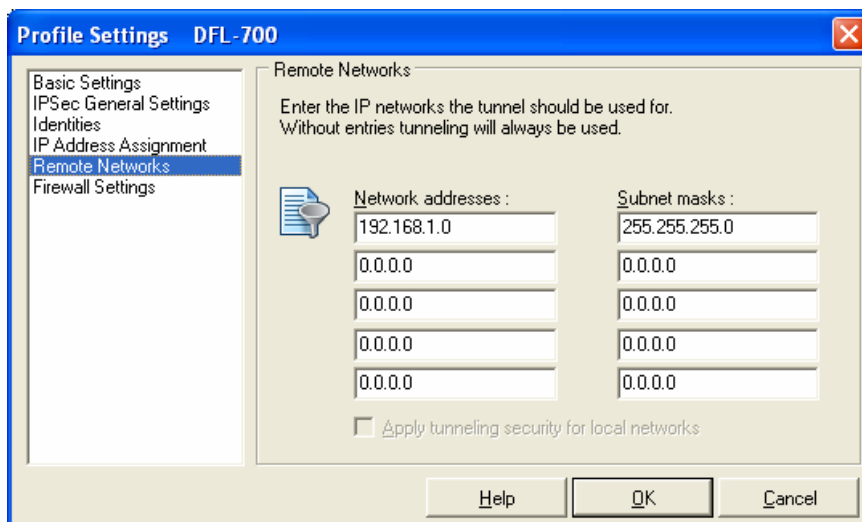
ID :

Click Finish and after that choose to Configure the new connection created.

Go to IP Address Assignment and choose Manual IP Address and key in an IP in the Virtual network (192.168.10.0/24) we created in the firewall for this connection.



Now go to Remote Networks and fill in the remote net used behind the firewall.



Click on OK and try the connection.