

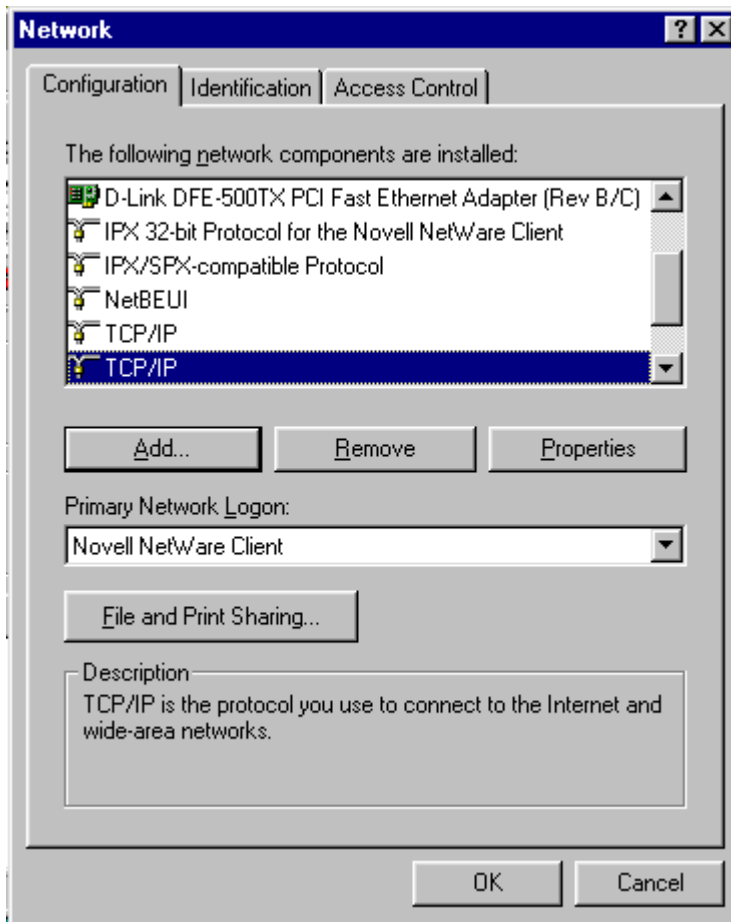
Setting up DI-106/300 for internet access w/ ISP using dynamic single IP address

Setting up the workstation.

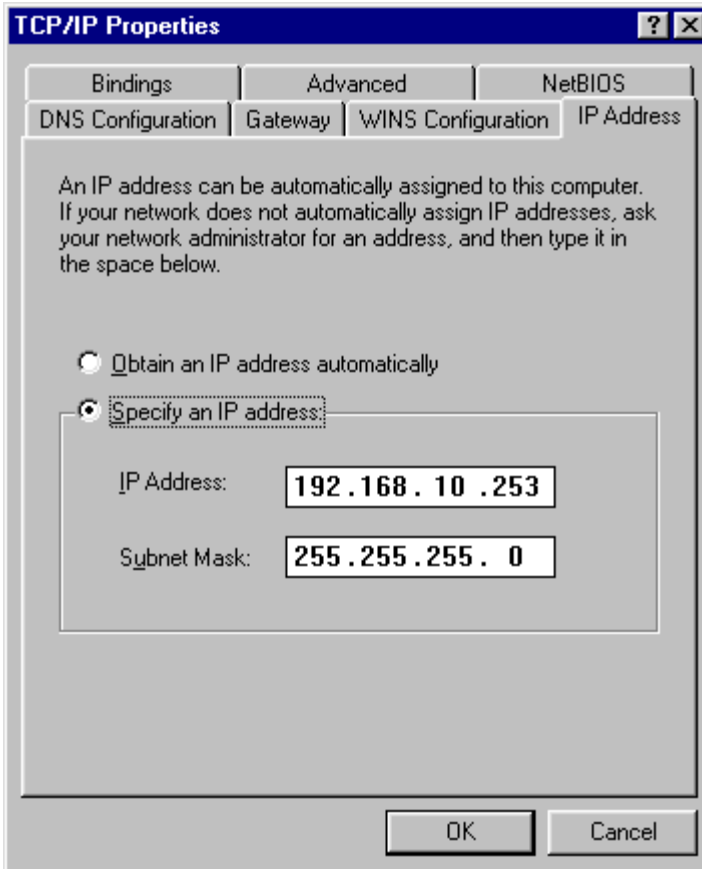
Tcp/ip configuration.

Make sure that you have got the TCP/IP protocol installed. This can be done in control panel, networks.

Screen below shows a PC with TCP/IP protocol loaded.

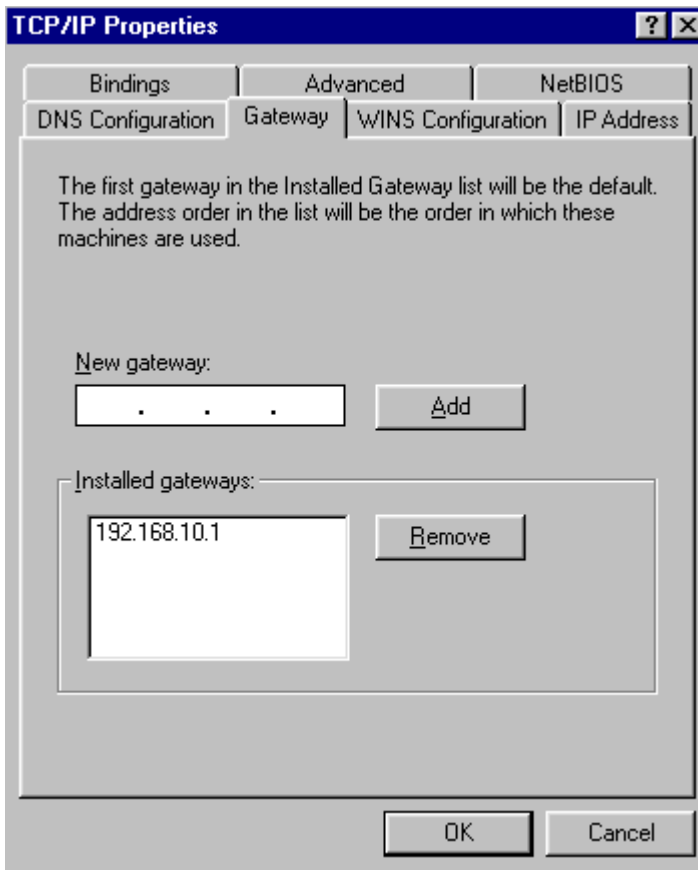


If it is loaded then look at the properties by selecting the protocol then click on properties.



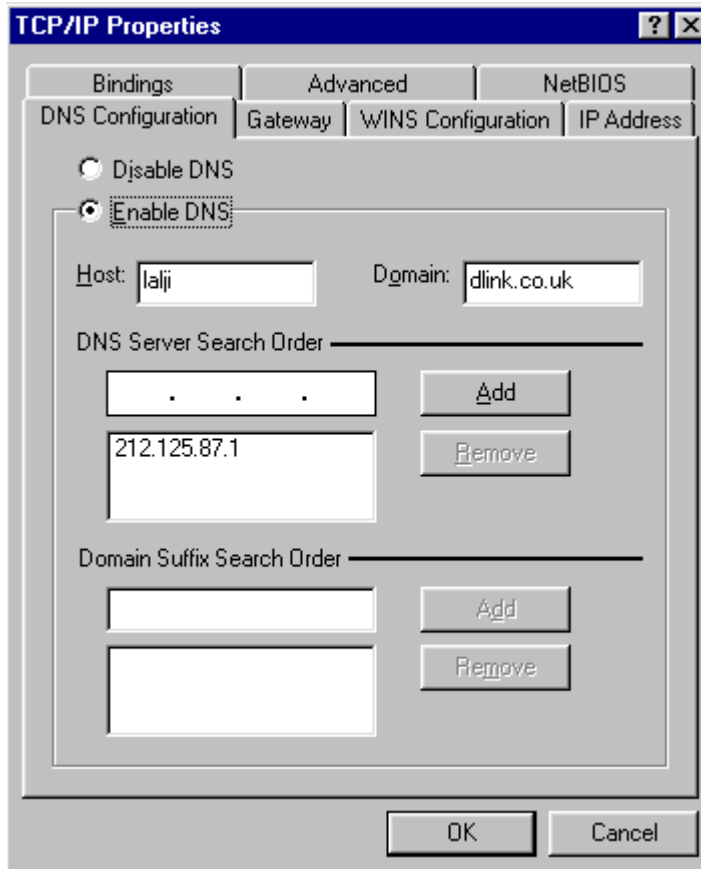
Select specify an IP address and Subnet mask (IP address should be a valid IP address for your network and the Subnet mask should also be the right one for the IP address).

Specify the default gateway under the gateway tab.



The gateway will be the IP address of the router. So make a note of the gateway that you enter as you will need it later on.

Specify the DNS settings under the DNS Configuration.

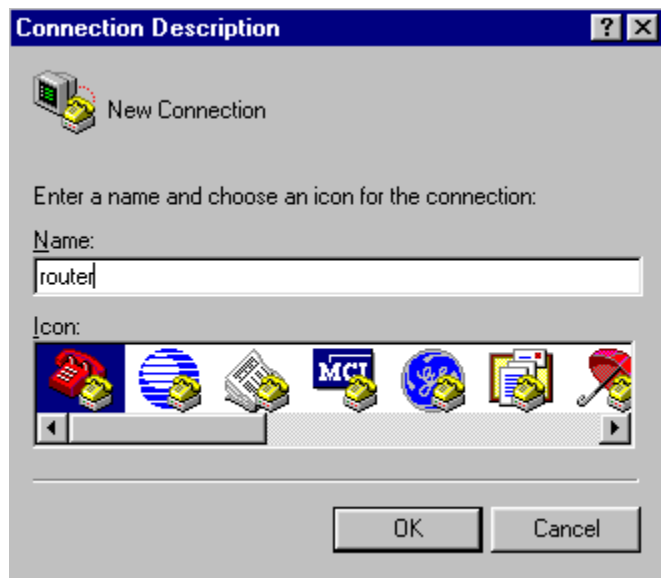


First enable DNS, enter host name, this can be anything you like. In the DNS server search order enter the DNS IP address provided by your ISP.

That completes the workstation setup.

Router setup

Connect the router's RS232 port to your PC's com port (make note of the com port number). Go to Start, programs, accessories, Hyper terminal. Double click on hyperterm.exe and you will be prompted for a name

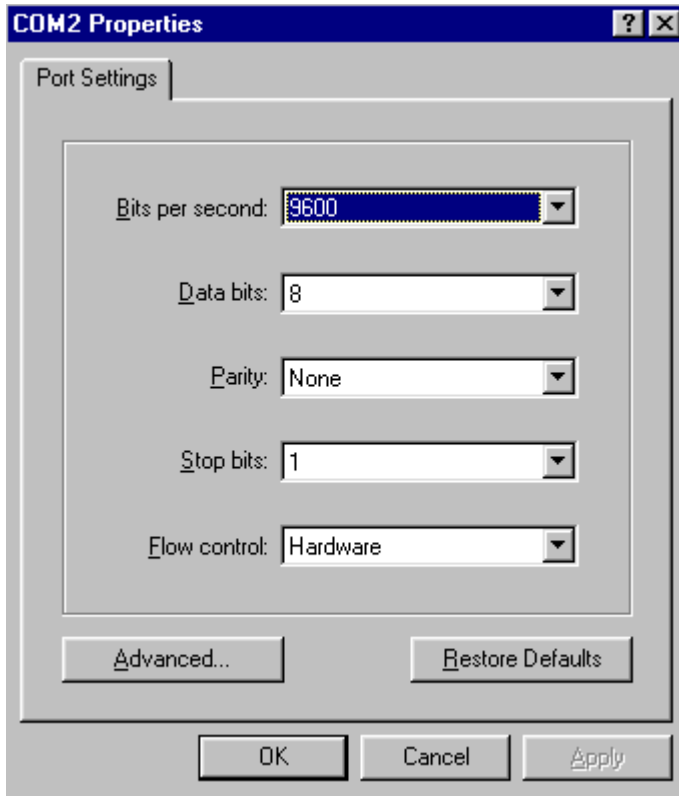


Enter anything you like (router). Then click ok. You will be asked for phone number.



Set connect using to direct to the com port that you are using. (I have got the router connected to com port 2) then do OK.

It will prompt for com port properties.



The setting should be the same as shown above. If not change the settings so that they are the same. Then do ok.

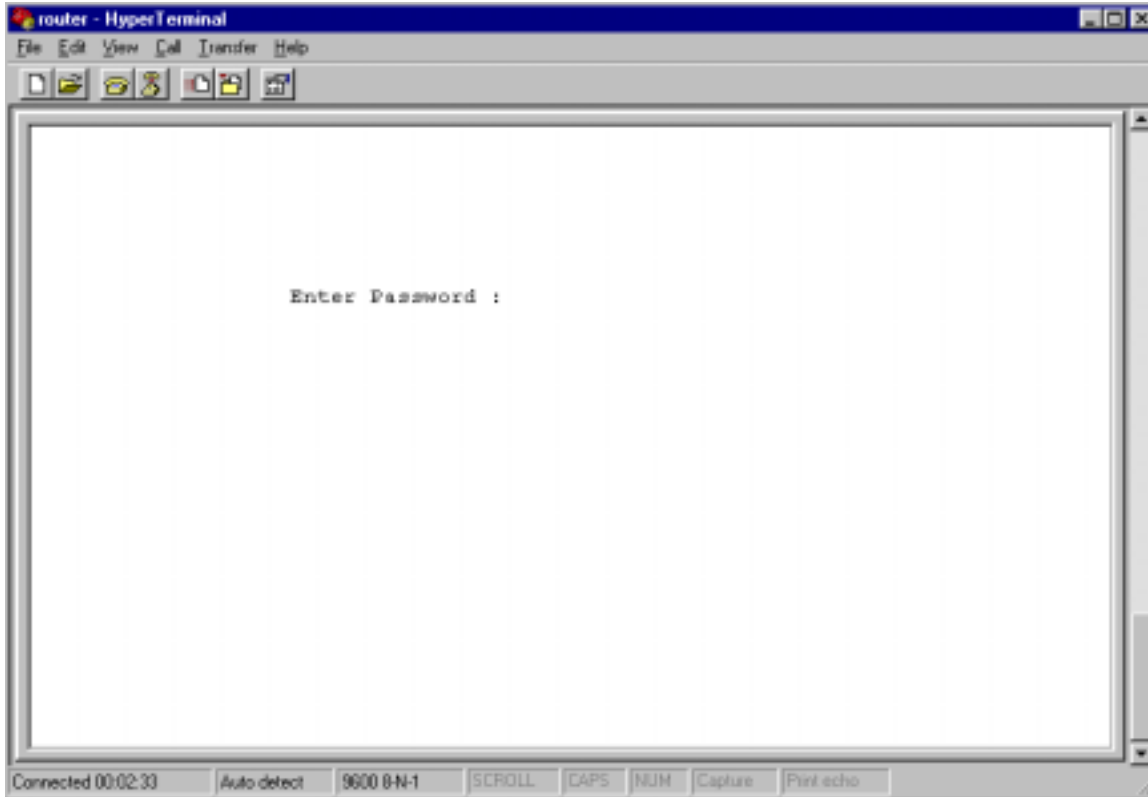
D-Link[®]

TECHNICAL BULLETIN

Web server: <http://www.dlink.co.uk>
FTP server: <ftp://ftp.dlink.co.uk/pub>

D-Link (Europe) Ltd.
4th Floor, Merit House
Edgware Road
Colindale
London NW9 5AB
Tel: +44 (0)20 8731 5555
Fax: +44 (0)20 8731 5511

You will be prompted with a blank screen with a flashing cursor on the top left hand corner. Press enter and you will be prompted with the following screen.



The default password is 1234.

D-Link®

TECHNICAL BULLETIN

Web server: <http://www.dlink.co.uk>
FTP server: <ftp://ftp.dlink.co.uk/pub>

D-Link (Europe) Ltd.
4th Floor, Merit House
Edgware Road
Colindale
London NW9 5AB
Tel: +44 (0)20 8731 5555
Fax: +44 (0)20 8731 5511

Then you will be displayed with the following main menu. To select an option press the number to go back a menu press escape this will not save the settings. To save the settings go to the bottom of the screen and confirm the settings.

```
D-Link Corporation
DI-106 Main Menu

Getting Started
  1. General Setup
  2. ISDN Setup
  3. Ethernet Setup
  4. Internet Access Setup

Advanced Applications
  11. Remote Node Setup
  12. Static Routing Setup
  13. Default Dial-in Setup
  14. Dial-in User Setup
  15. SUA Server Setup

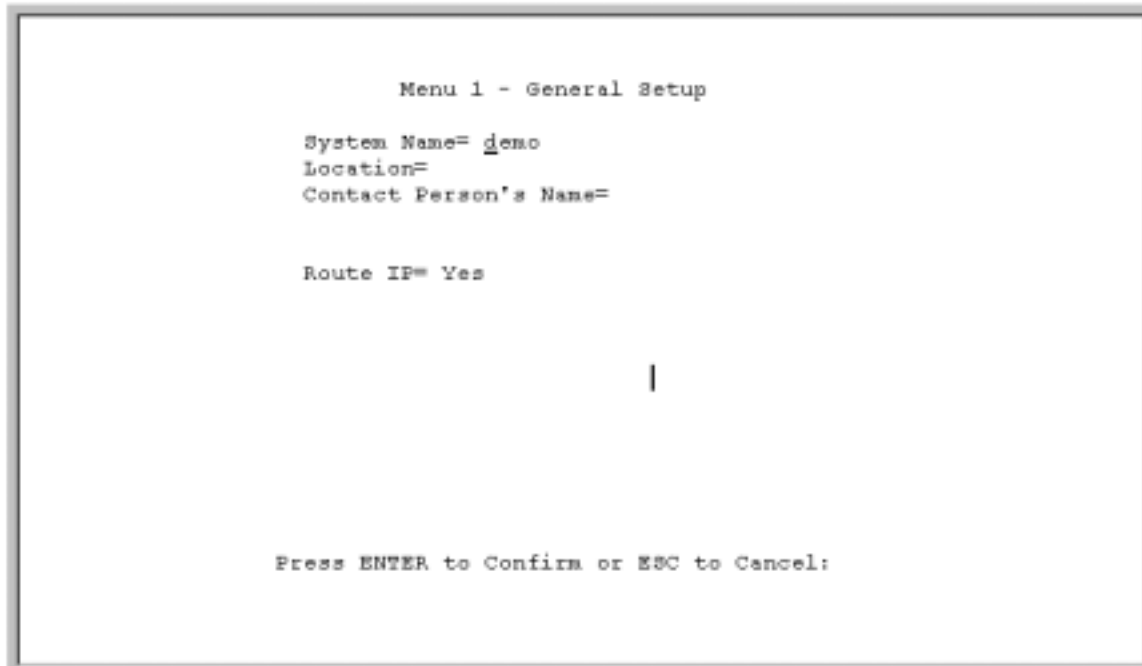
Advanced Management
  21. Filter Set Configuration
  23. System Security
  24. System Maintenance

99. Exit

Enter Menu Selection Number:
```


Select option 1

It should read as follows



System name can be anything you like. Route IP should be YES.

D-Link®

TECHNICAL BULLETIN

Web server: <http://www.dlink.co.uk>
FTP server: <ftp://ftp.dlink.co.uk/pub>

D-Link (Europe) Ltd.
4th Floor, Merit House
Edgware Road
Colindale
London NW9 5AB
Tel: +44 (0)20 8731 5555
Fax: +44 (0)20 8731 5511

Then go back a menu and select 2

```
Menu 2 - ISDN Setup

Switch Type: DSS-1
B Channel Usage= Switch/Switch

ISDN Data      = 01813813010      Subaddress=
A/B Adapter 1 =                   Subaddress=
A/B Adapter 2 =                   Subaddress=

Dial Prefix to Access Outside Line=
PABX Number (Include S/T Bus Number)=
Incoming Phone Number Matching= Multiple Subscriber Number (MSN)
  Analog Call Routing= N/A
  Global Analog Call= N/A

Advance Setup = No

Press ENTER to Confirm or ESC to Cancel:

Press Space Bar to Toggle.
```

ISDN data should be your local isdn number including area code.

Then go to menu 3 then menu 2
In this menu you will be specifying the IP address of the router.

```
Menu 3.2 - TCP/IP and DHCP Ethernet Setup

DHCP Setup:
DHCP= None
Client IP Pool Starting Address= N/A
Size of Client IP Pool= N/A
Primary DNS Server= N/A
Secondary DNS Server= N/A

TCP/IP Setup:
IP Address= 192.168.10.1
IP Subnet Mask= 255.255.255.0
RIP Direction= Both
Version= RIP-2B

Press ENTER to Confirm or ESC to Cancel:

Press Space Bar to Toggle.
```

My router IP address is the same as the default gateway that I have set on the PC.

Now go into menu 4, You need to have your ISP details handy.

```
Menu 4 - Internet Access Setup

ISP's Name= demon
Pri Phone #= 08450798667
Sec Phone #=
My Login= whatever
My Password= *****
Single User Account= Yes
  IP Addr= 0.0.0.0

Telco Option:
  Transfer Type= 64K

Multilink= Off

Press ENTER to Confirm or ESC to Cancel:
```

Here you will need to enter the ISP's name, phone number, your login and password. Set single user account to yes. IP address to 0.0.0.0.

That's the configuration complete.