



DCS-4625

5-Megapixel Panoramic Fisheye Camera

Features

Exceptional Video Quality

- 1/2.5" 5-megapixel progressive CMOS sensor
- Maximum resolution of 2560 x 1920
- Wide Dynamic Range (WDR) image enhancement
- Built-in IR LED illuminator with a 5-metre range for use in dark areas
- H.265, H.264, MJPEG codec support for streaming and recording
- Motion detection

Flexibility

- 10/100 Fast Ethernet port
- Power over Ethernet (PoE) ensures easy and flexible integration into your network
- microSD card slot for onboard storage¹
- Digital input socket for connection to an external device
- Audio input can be connected to a microphone

The D-Link DCS-4625 5-Megapixel Panoramic Fisheye Camera is a high-definition professional surveillance solution suitable for both SMBs and enterprises. The camera uses a high-sensitivity 1/2.5" 5-megapixel progressive scan CMOS sensor with onboard WDR image enhancement to deliver truly superior quality video in all conditions. With its fisheye lens, a high-resolution sensor, distortion correction and PoE support, it's the ideal solution for monitoring large areas with a single camera without the need for additional accessories.

High-Quality Video and Recording

To maximise bandwidth efficiency and improve image quality, the DCS-4625 provides real-time video compression using the latest H.265 codec. It also supports H.264/MJPEG codecs and three separate profiles for simultaneous video streaming and recording. Video resolutions of up to 2560 x 1920 provide clear details, noise reduction and support for simultaneous video streams, improving quality in case forensic work is required for evidence. Additional support for motion detection, tamper detection and event management features allow for implementation in a wide variety of surveillance applications such as monitoring public areas to detect incidents and to coordinate responses, enforcing access control to restricted areas, deterring criminal activity, or monitoring inventory.

Complete Day/Night Surveillance Solution

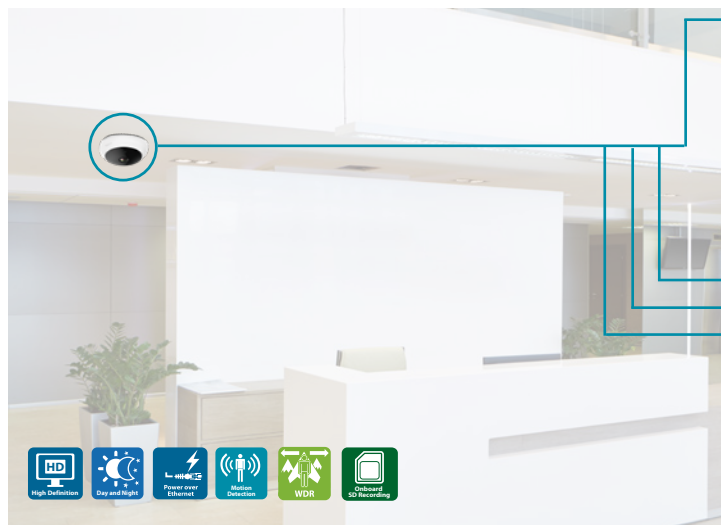
Day or night, the 5-Megapixel Panoramic Fisheye Camera watches over your premise to keep you informed of what's going on. Night vision with IR illuminators makes sure nothing is hidden in the shadows, even in complete darkness. Motion detection lets you record events with ease and can even save snapshots and video before the event even happens so you do not miss an important moment.

Robust Management Software

The DCS-4625 5-Megapixel Panoramic Fisheye Camera is bundled with D-ViewCam, a complete surveillance software package that enables you to view, manage, and record from up to 32 cameras on a single computer in a central location. Recordings and e-mail alerts can be triggered upon motion detection or by digital input devices. This feature automatically keeps a record of any unusual activity and notifies administrators when no one is around to monitor on-site.

Flexible Connectivity

The DCS-4625 has built-in 802.3af-compliant PoE support that simplifies installation by providing power and networking connectivity over a single standard network cable. This feature can speed along installation by reducing the need to lay extra electrical wiring and installing outlets on location since a power supply is not required.



360° Whole Room Coverage

- See it all with a wide-angle fisheye lens that gives you complete 360° coverage that lets you monitor a large area with a single camera.

5 Megapixel Quality and H.265 Compression

- An ultra-sharp 5 megapixel sensor and H.265 compression to strike a perfect balance between high image quality and streaming bandwidth efficiency.

Wide Dynamic Range

- Allows the camera to see objects in contrasting light conditions.
- Ideal for entrances or windowed foyers where it is necessary to monitor both indoor and outdoor areas, or shadowed areas as well as brightly lit areas.

Complete Day/Night Surveillance Solution

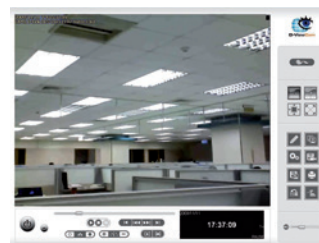
- Keep watch over an area 24 hours a day with built-in night vision; the IR LEDs and automatic IR-cut filter gives you a clear picture, even in complete darkness.

Free D-ViewCam™ Video Management Software DCS-100

Bundled free with D-Link network cameras D-ViewCam enables users to centrally manage multiple cameras for home or businesses.

Supporting up to 32 network cameras and up to 64 users, D-ViewCam is compatible with all current D-Link network cameras and video servers, offers digital monitoring and recording with a wide array of features including simultaneous video recording, playback and live view.

D-ViewCam offers scheduled, motion and manual recording. Recorded files can be searched by video type and selected files can be played, edited and converted into AVI or ASF files. The e-map mode in the application allows users to arrange a map with camera locations and orientation, while additional features such as auto-patrol, rotate, zoom, and focus provide optimal control over video surveillance.



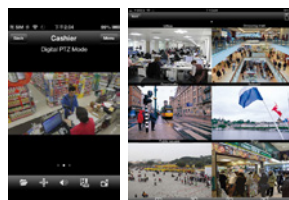
Playback view



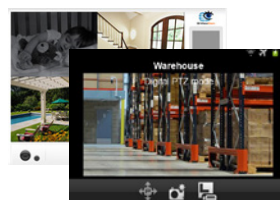
Live view

D-ViewCam Mobile

Keep an eye on your surveillance cameras anytime, anywhere with D-Link's D-ViewCam Mobile app. The D-ViewCam Mobile app makes it easy to check on your business no matter where you are, no matter what time of day it is.



For iPhones/iPads



For Android devices

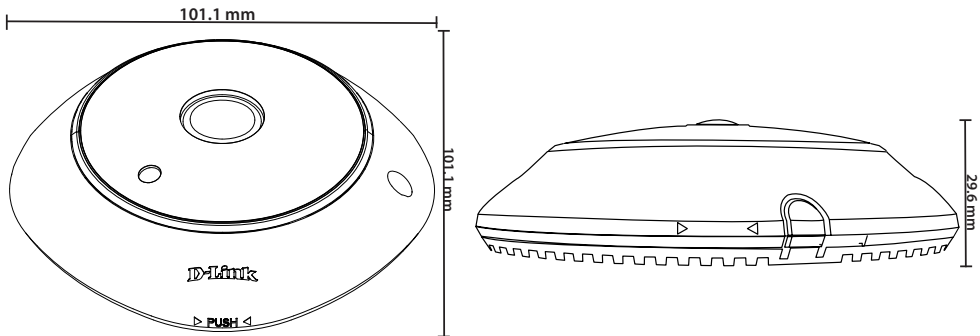


Technical Specifications

Camera

Camera Hardware Profile	<ul style="list-style-type: none"> • 1/2.5" 5 megapixel progressive CMOS sensor • 5 meter IR illumination distance • Minimum illumination: <ul style="list-style-type: none"> • 0.01 lux / F2.0 (color) • 0.008 lux / F2.0 (B/W) • 0 lux / F2.0 (IR-LED on) • Built-in Infrared-Cut Removable (ICR) Filter module • Minimum object distance 0.5M 	<ul style="list-style-type: none"> • Auto electronic shutter: 1/12s ~ 1/27000s • Focal length: 1.37 mm • Aperture: F2.0 • Angle of view: <ul style="list-style-type: none"> • (H) 180° • (V) 180° • (D) 180°
Image Features	<ul style="list-style-type: none"> • Configurable image size, quality, frame rate, and bit rate • Configurable motion detection windows • Configurable shutter speed, brightness, saturation, contrast, sharpness and 3D filter. 	<ul style="list-style-type: none"> • Auto White Balance (AWB) • Auto Gain Control (AGC) • Wide Dynamic Range (WDR) • Time stamp and text overlays
Display Mode	<ul style="list-style-type: none"> • Fisheye view (1O) • Normal view (1R) • Panoramic view (1P) 	<ul style="list-style-type: none"> • Multi-view with panorama (2P) • Multi-view (4R)
Video Compression	<ul style="list-style-type: none"> • Simultaneous H.265/H.264/MJPEG format compression • H.265/H.264/MJPEG multicast streaming 	<ul style="list-style-type: none"> • JPEG for still images
Video Resolution	<ul style="list-style-type: none"> • 4:3 <ul style="list-style-type: none"> • 2560x1920, 1600x1200, 1280x960, 800x600, 640x480 up to 30 fps 	<ul style="list-style-type: none"> • 16:9 <ul style="list-style-type: none"> • 2560x1440, 1920x1080, 1280x720, 640x360 up to 30 fps
Audio Support	<ul style="list-style-type: none"> • G.711 μ-law 	<ul style="list-style-type: none"> • MPEG2-AAC LC
External Device Interfaces	<ul style="list-style-type: none"> • 10/100 BASE-TX Fast Ethernet port • Supports 802.3af poE Class 3 • DC 12V input 	<ul style="list-style-type: none"> • microSD/SDHC/SDXC card slot, accepts cards up to 256 GB • Digital input • Audio line input
Network		
Network Protocols	<ul style="list-style-type: none"> • IPv6 • IPv4 • ARP • TCP/IP • UDP • ICMP • DHCP client • NTP client (D-Link) • DNS client • FTP client • SMTP client • Bonjour 	<ul style="list-style-type: none"> • 802.1x port-based authentication • HTTP/HTTPS • PPPoE • UPnP port forwarding • RTP/RTSP/RTCP • IP filtering • Multicast • CoS • QoS/DSCP • SNMP v1/v2/v3 • ONVIF Profile S compliant
Security	<ul style="list-style-type: none"> • Administrator protection • Password authentication 	<ul style="list-style-type: none"> • HTTP and RTSP authentication

DCS-4625 5-Megapixel Panoramic Fisheye Camera

System Management		
Event Management	<ul style="list-style-type: none"> • Motion detection • Tamper detection • Event notification and uploading of snapshots/video clips via e-mail or FTP 	<ul style="list-style-type: none"> • Supports multiple SMTP and FTP servers • Multiple event notifications • Multiple recording methods for easy backup
Remote Management	<ul style="list-style-type: none"> • Take snapshots/video clips and save to local hard drive 	<ul style="list-style-type: none"> • Configuration interface accessible via web browser
System Requirements for Web Interface	<ul style="list-style-type: none"> • Operating System: Microsoft Windows 10 / 8 / 7 	<ul style="list-style-type: none"> • Browser: Internet Explorer, Firefox, Chrome
D-ViewCam™ System Requirements	<ul style="list-style-type: none"> • Operating System: <ul style="list-style-type: none"> • 32-bit: Windows 8 / 7 (SP1) • 64-bit: Windows 10 / 8 / 7 (SP1) / Server 2012 / Server 2008 R2 	<ul style="list-style-type: none"> • Web Browser: Internet Explorer 7 or higher • Protocol: Standard TCP/IP
D-ViewCam™ Software Functions	<ul style="list-style-type: none"> • Remote management/control of up to 32 cameras • Supports all management functions provided in web interface 	<ul style="list-style-type: none"> • Viewing of up to 32 cameras on one screen • Scheduled motion triggered, or manual recording options
General		
Weight	<ul style="list-style-type: none"> • 190g ± 5% 	
External Power Adapter (not included)	<ul style="list-style-type: none"> • Input: 100 to 240 V AC, 50/60 Hz 	<ul style="list-style-type: none"> • Output: 12 V DC 1.5 A
Power Consumption	<ul style="list-style-type: none"> • 8W ± 5% (PoE) 	
Temperature	<ul style="list-style-type: none"> • Operating: 0 to 40 °C (32 to 104 °F) 	<ul style="list-style-type: none"> • Storage: -20 to 70 °C (-4 to 158 °F)
Humidity	<ul style="list-style-type: none"> • Operating: 20% to 80% non-condensing 	<ul style="list-style-type: none"> • Storage: 5% to 95% non-condensing
Certifications	<ul style="list-style-type: none"> • CE • CE LVD 	<ul style="list-style-type: none"> • FCC • RCM
Dimensions		
		

*The camera is compatible with microSD cards up to v3.01 and is not compatible with v4.x cards.



For more information: www.dlink.com

D-Link European Headquarters. D-Link (Europe) Ltd., First Floor, Artemis Building, Odyssey Business Park, West End Road, South Ruislip HA4 6QE, United Kingdom. Specifications are subject to change without notice. D-Link is a registered trademark of D-Link Corporation and its overseas subsidiaries. All other trademarks belong to their respective owners. ©2019 D-Link Corporation. All rights reserved. E&OE.

Updated August 2019

D-Link®