

Contents of Package:

- DWL-520 11Mbps Wireless PCI Adapter
- Printed Quick Installation Guide
- CD with Manual and Drivers

If any of the above items are missing, please contact your reseller.

1

Installing the Driver

Turn “On” your computer. Insert the driver CD for the DWL-520 Wireless PCI Adapter into the CD-ROM drive. The screen shown below will appear.

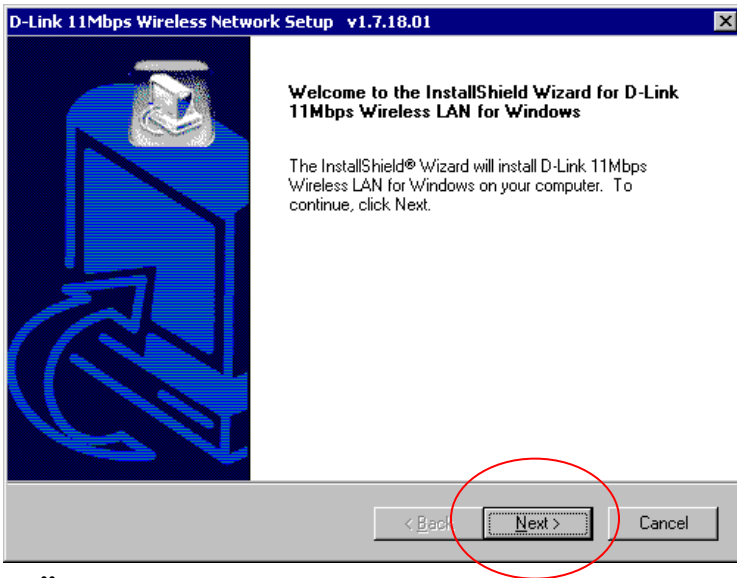


Click “Install Config Utilities.”

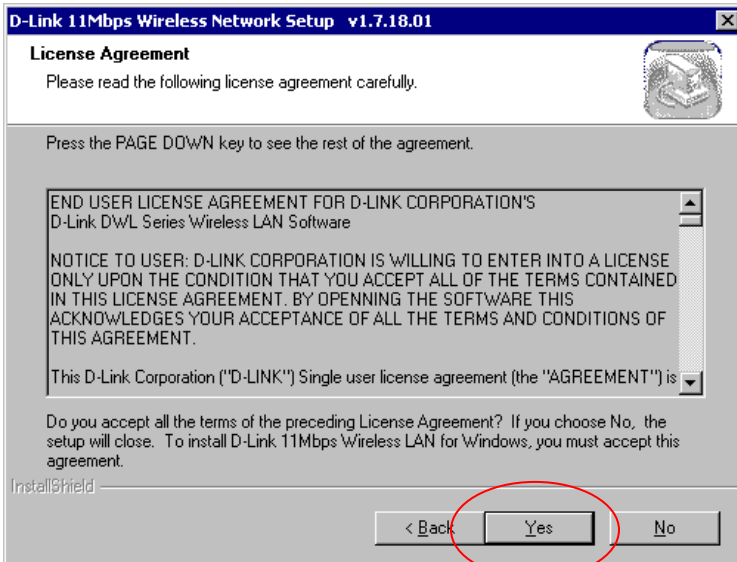
1

Installing the Driver (continued)

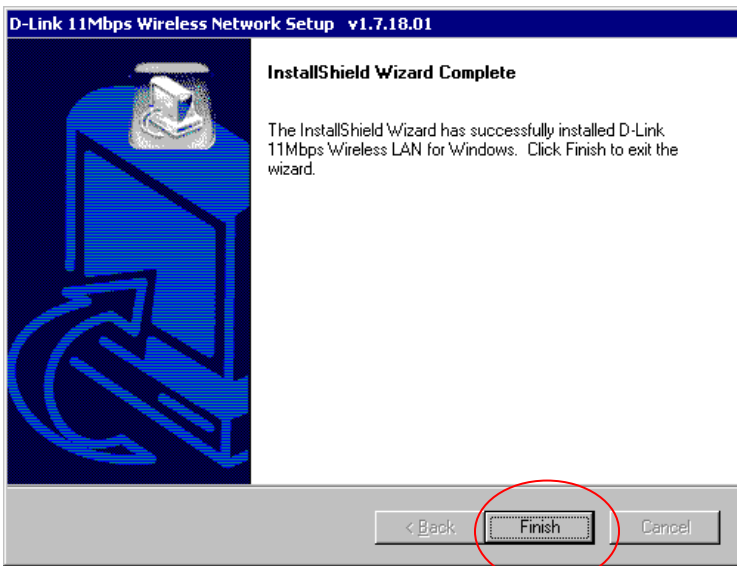
The “Welcome” screen, shown below, will appear.



Click “Next.”



Click “Yes” to accept the **License Agreement**.



The driver installation is complete. Click “Finish.”

(Important: Please TURN OFF the computer and unplug the power cord before proceeding to Step 2.)

2

Installing the DWL-520 PCI Adapter

(Please make sure that your computer is turned off and the power cord is unplugged.)

Note: To avoid damage caused by static electricity, make sure to properly ground yourself by first touching a metal part of your computer to discharge any static electricity before installing the DWL-520 Wireless PCI Adapter.

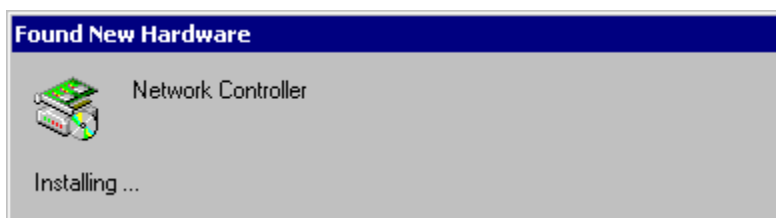


2

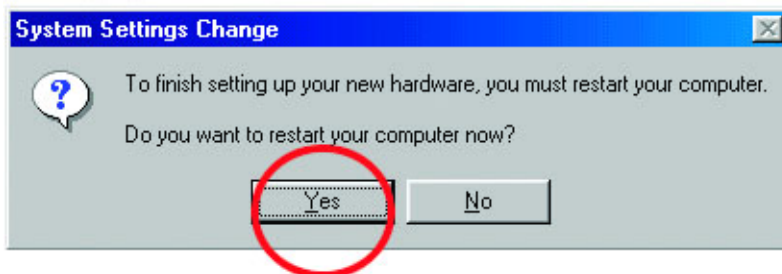
Installing the DWL-520 PCI Adapter (continued)

- **Remove** the back cover of the computer.
- **Install** the DWL-520 carefully and firmly into an available PCI slot which is usually “white” or “cream” colored
- **Secure** the DWL-520 with a screw.
- **Replace** the computer’s cover.
- **Plug in** the power cord and **turn on** your computer.

Windows will recognize the PCI adapter and automatically detect the driver. (If Windows does not automatically recognize the driver, please install the driver manually. Please see **Appendix A** in this guide for more information.)



The installation of the DWL-520 Wireless PCI Adapter is complete.



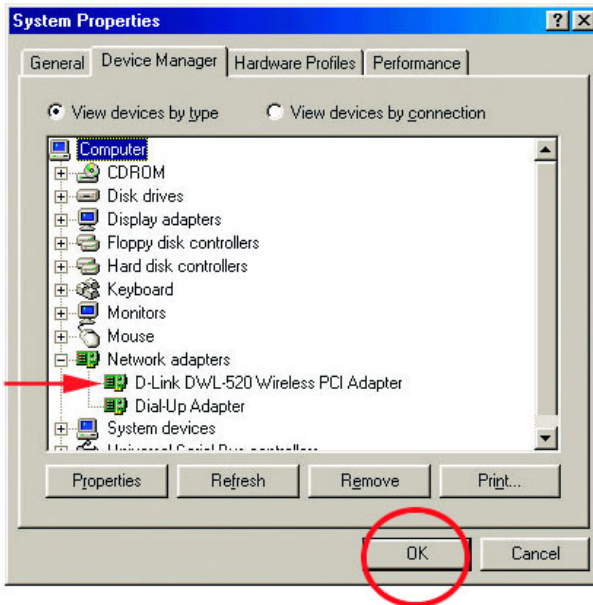
Windows ME and Windows 98 users will be prompted to restart the computer. **Click “Yes.”**

Windows 2000 users, please **restart** your computer.

3

Checking the Installation

Go to **Start > Settings > Control Panel > System > Device Manager**



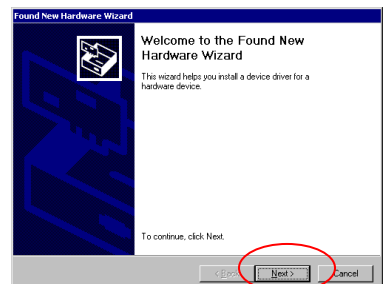
To check that the installation of the DWL-520 was successful, scroll down in the **“Device Manager”** window and click on **“Network Adapters.”** You have a successful installation when **“D-Link DWL-520 Wireless PCI Adapter”** appears as shown above.

Appendix A

Manually Installing the Drivers

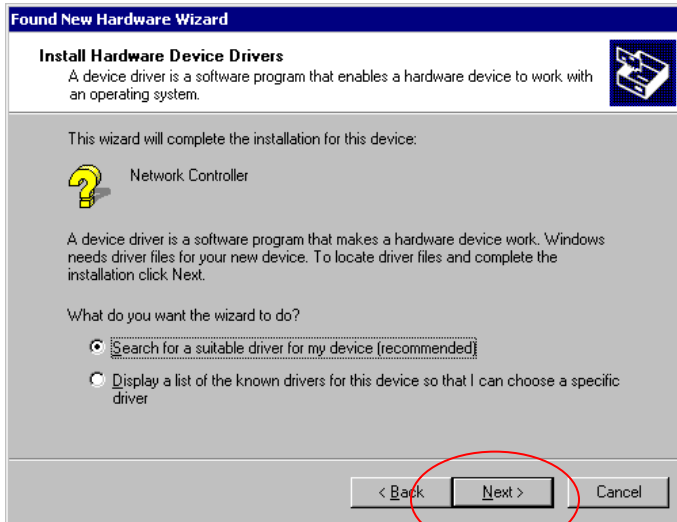
If Windows does not automatically recognize the drivers, go to **Control Panel > select Add/Remove New Hardware**. The screen to the right will appear.

Click **“Next.”**

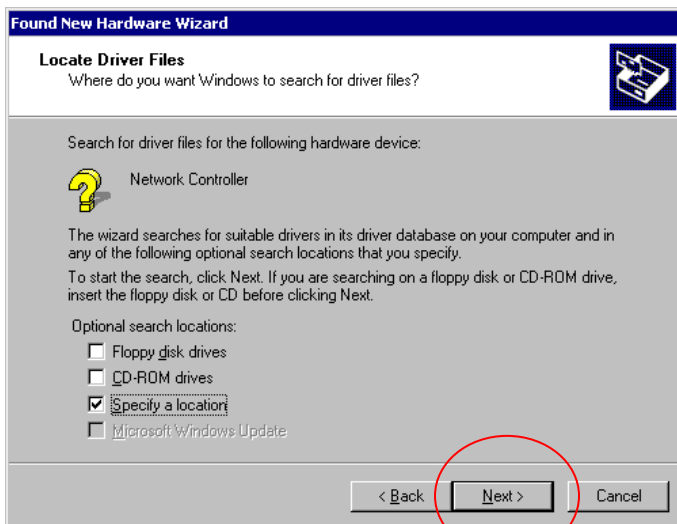


Appendix A (continued)

Manually Installing the Drivers (continued)



Click “Next.”

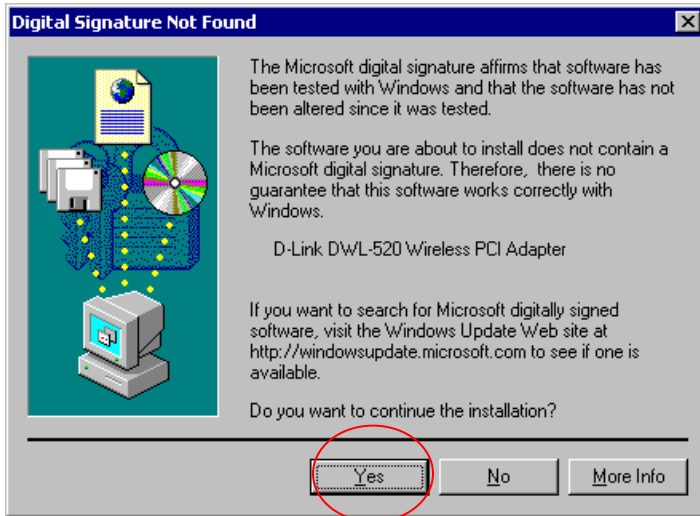


Click “Next.”

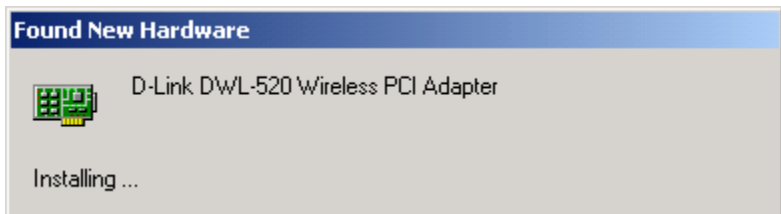
Select the CD-ROM drive (e.g., **D:** if **D** is the letter representing the CD-ROM drive.)

Appendix A (continued)

When Windows 2000 and ME locate the correct drive, the following screen will appear.



Click “Yes” to complete the installation.




Restart your computer.

Appendix B

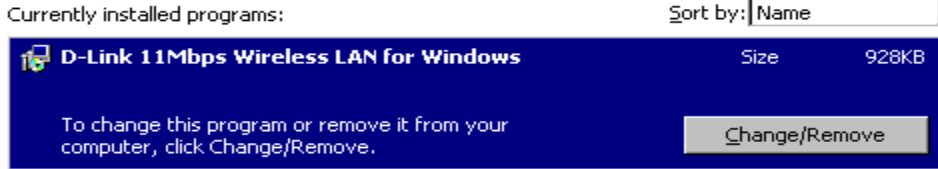
Uninstalling the DWL-520 Wireless PCI Adapter

1. Please quit the Configuration Utility and other open applications.

(Right-click on the icon in the lower right corner of the tray bar . Quit the Configuration utility when prompted.)

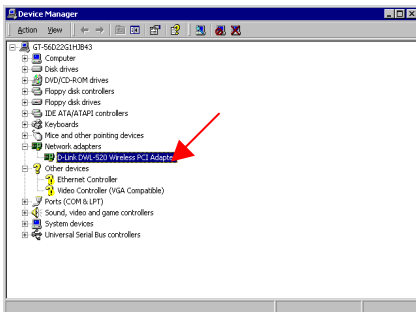
Appendix B (continued)

2. Go to **Start > Settings > Control Panel > Add/Remove Programs**.
Remove “D-Link 11Mbps Wireless LAN for Windows.”



3. Click “Change/Remove.”

4. Go to **System Properties > Hardware > Device Manager > Network Adapters**.
Right-click on “D-Link DWL-520 Wireless PCI Adapter.”
Select “Uninstall.”



5. Finally, click “OK.”
The **Uninstall** is complete.



Technical Support

You can find the most recent software and user documentation on the **D-Link** website.

D-Link provides free technical support for customers within the United States for the duration of the warranty on this product. U.S. customers can contact **D-Link** technical support through our web site, by e-mail, or by phone.

United States technical support is available Monday through Friday from 6:00 a.m. to 6:00 p.m. (PST.)

Technical Support Website: <http://www.support.dlink.com>

Email: support@dlink.com

Phone: 949-790-5290

If you are a customer residing outside of the United States, please refer to the list of **D-Link** locations that is included in the User's manual.