

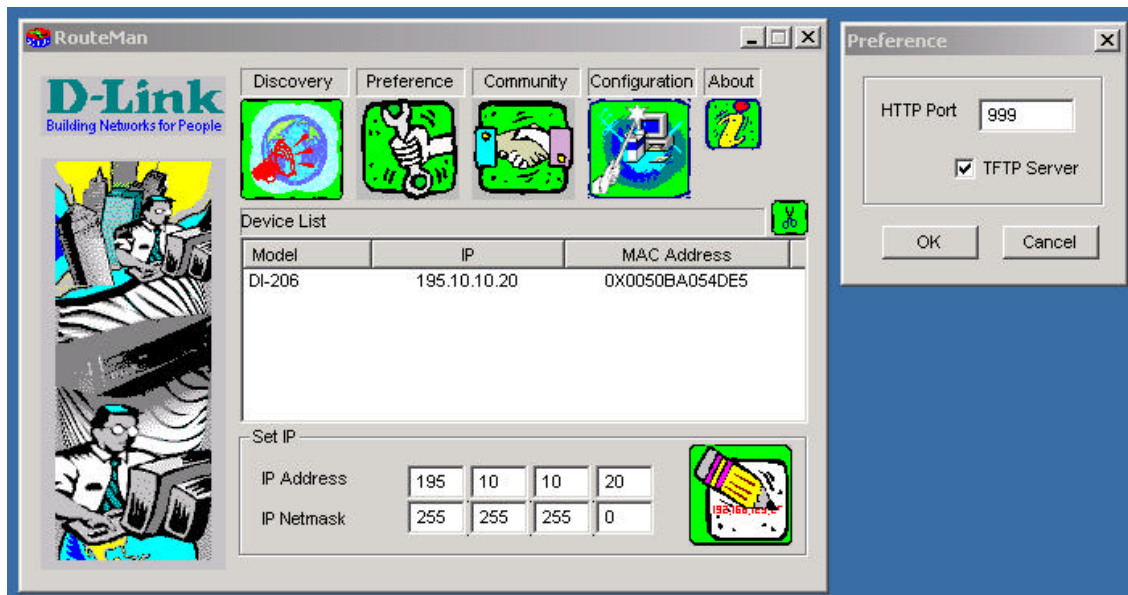
Document: How To Upgrade Firmware on a DI-206 / DI-308 Router

1. Introduction

The purpose of this document is to explain how to perform a firmware upgrade to a DI-206 router. In the DI-206 router, the method of firmware update is Trivial File Transfer Protocol or TFTP. To carry out a firmware update, you are required to have a TFTP server in your network. As this is a requirement for firmware update of the DI-206 Router D-Link have provided you with a TFTP server built in to the RouteMan configuration software, and hence you need to have RouteMan installed on a PC before firmware update can be done. Also, as TFTP uses TCPIP as the transport protocol this also needs to be installed and correctly working. Before proceeding.

2. RouteMan Configuration

When you execute routeman, you will see the following screen. Select the Preference box, and tick the TFTP server then click ok. Now leave RouteMan running and connect to the DI-206 Router by either the console port or by using your browser.

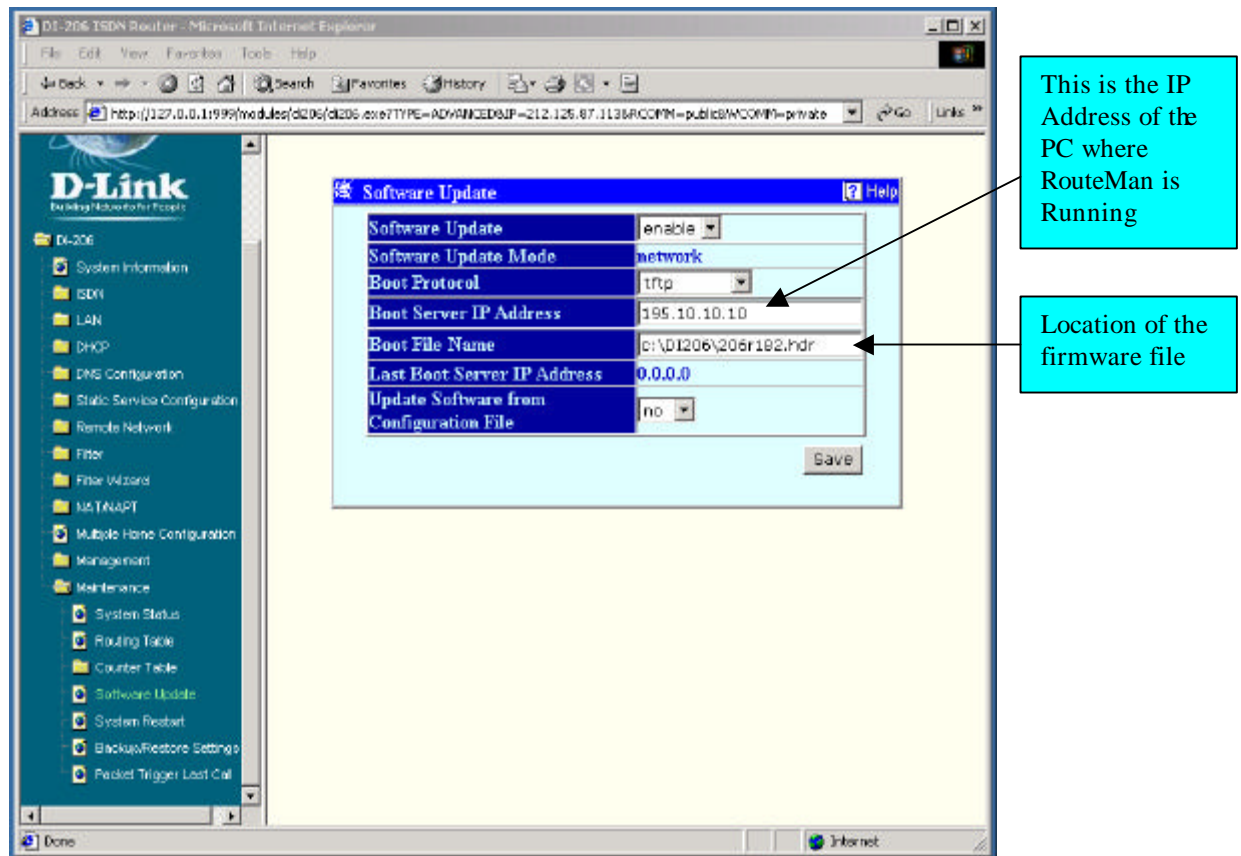


3. *PC Setup for Firmware Update.*

Copy the firmware file into a new or existing folder on your C: driver. For example C:\DI206\206r182.hdr. It would be beneficial to have RouteMan and the new firmware on the same PC.

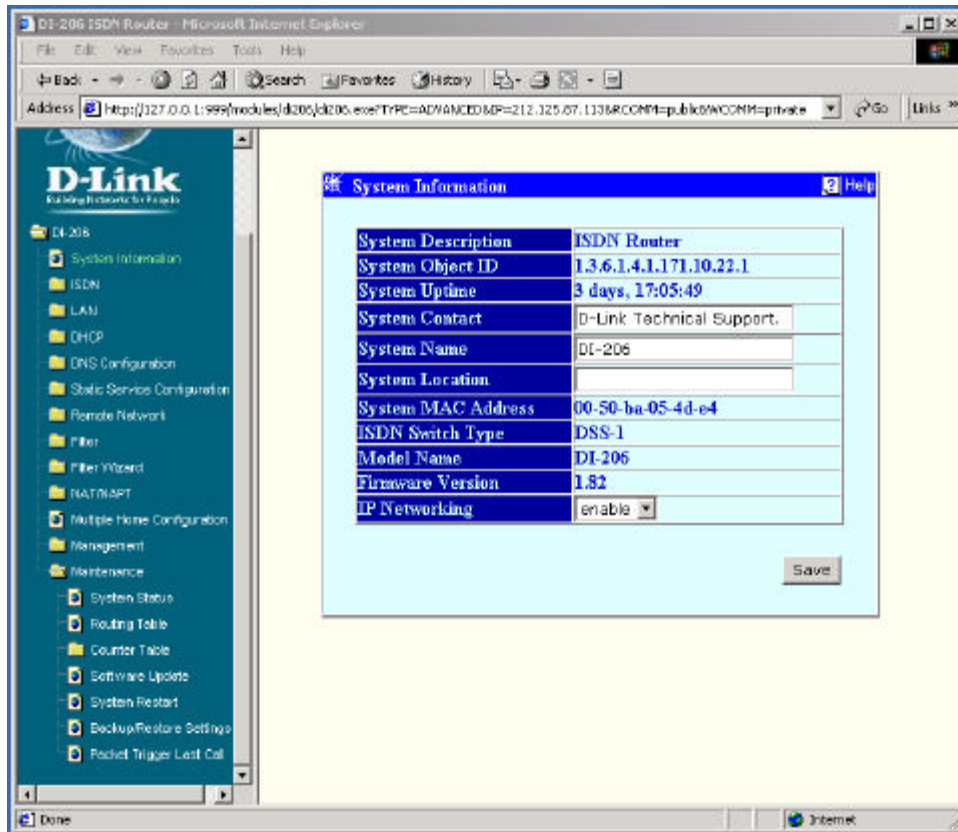
4. *Router Settings for Firmware Upgrade*

If you use your web browser, you will see a screen similar to the one shown below. Select Maintenance, then 'Software Update'



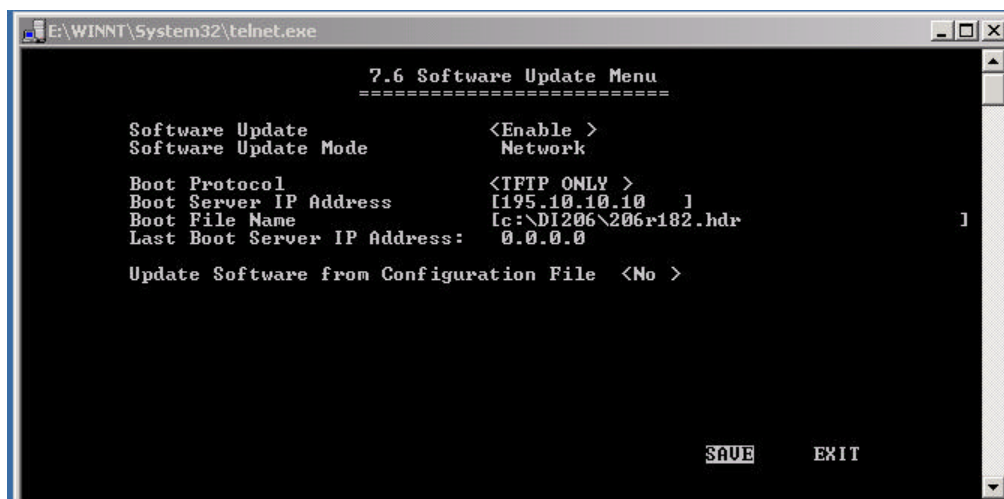
Select the 'Save' button to save the settings. Once the above is done, power down the router and power it back on. You can see if the firmware update has started by going to the Routeman screen. Please note, it can take up to 2 minutes to start the update.

After the firmware has been updated, restart router to check its firmware version. To do this, select 'System Information'. Screen shown below.



5. **Router Setting through Console Screen.**

- Main Menu – System Maintenance– Software Update -



Setup as above saving the settings. Now Reboot the router, either by powering down router or selecting
- Main Menu – System Maintenance– System Restart.

~ End of Document ~