

802.11a and 802.11b Multimode WLAN Cardbus Adapter

Note: The installation screenshots were taken in Windows 2000. For other Windows Operating Systems, the installation procedure will be nearly the same but the screens will differ in appearance somewhat.

Package Contents:

- D-Link *AirPro* DWL-AB650 Wireless Cardbus Adapter
Printed Quick Installation Guide
CD with Manual and Drivers

If any of the contents are missing, please contact your reseller.

System Requirements

- A laptop computer with an available 32-bit Cardbus slot
At least a 300 MHz processor and 32 MB of memory
Cardbus Controller properly installed and working
- An 802.11a or an 802.11b Access Point (for Infrastructure Mode) or another computer with an 802.11a or an 802.11b wireless adapter installed (for Ad-Hoc mode).

1

Installing the DWL-AB650

- Turn on the computer.
Insert the D-Link *AirPro* DWL-AB650 Wireless Cardbus Adapter into an available 32-bit Cardbus slot.

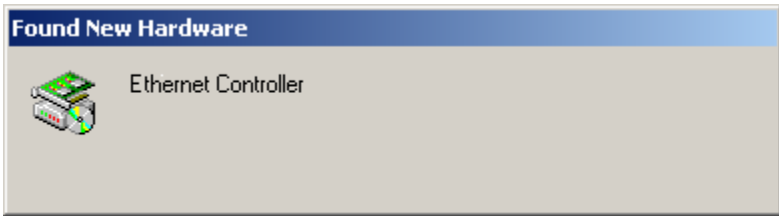


2

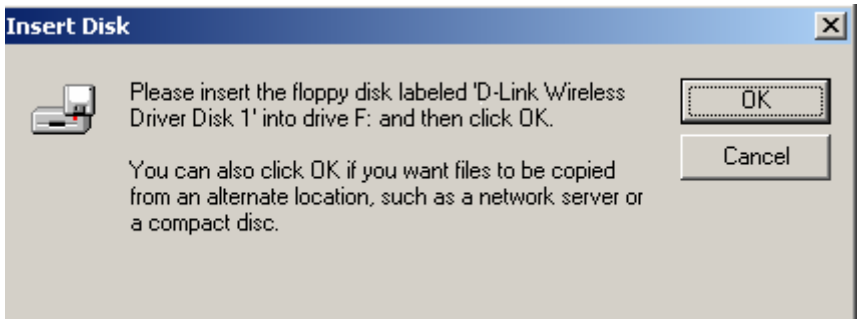
Installing the Driver

Installing the software for your new DWL-AB650 Cardbus Adapter involves two steps. The first is to install the driver for the Cardbus Adapter, and the second is to install the Configuration Utility.

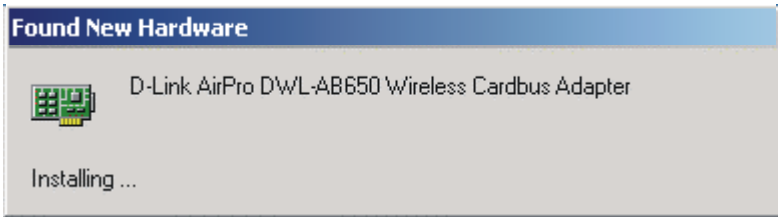
- When the Cardbus Adapter is inserted in a Cardbus slot, Windows will recognize the card and the following screen will appear:



- Insert the Driver CD into your CD-ROM drive, if you have not done so already. If the Driver CD is not in the CD-ROM drive, a prompt such as the one below will appear. Click *OK*.



- The installation will continue. The following screen appears to let you know that the driver installation is continuing.

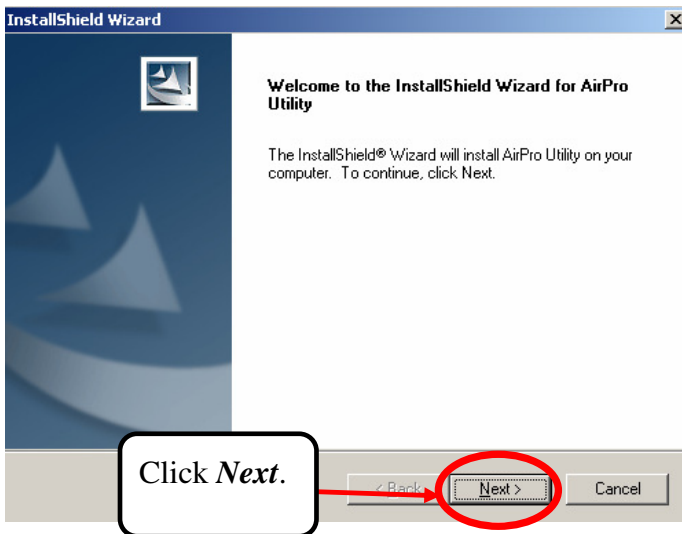


- When the driver installation is complete, the screen shown above will disappear.

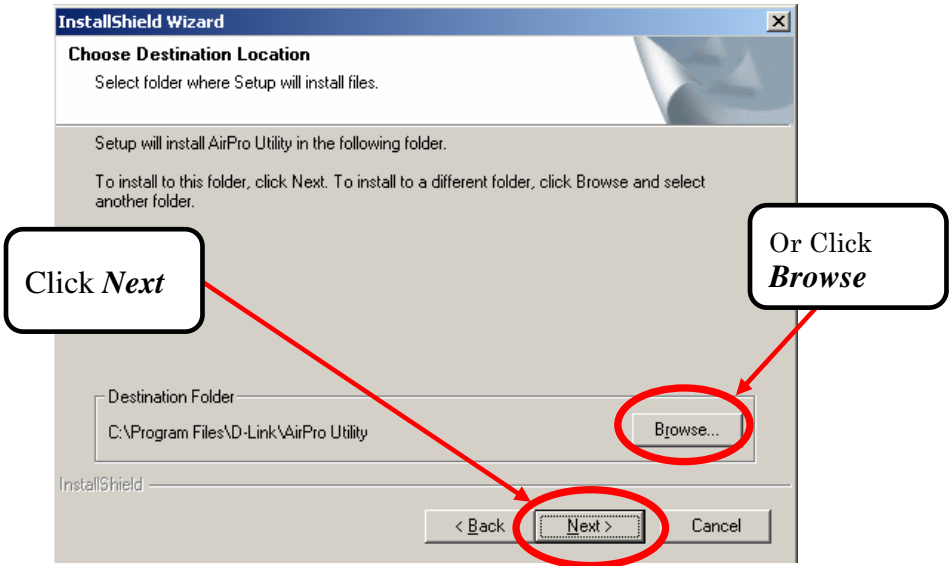
3

Installing the Configuration Utility

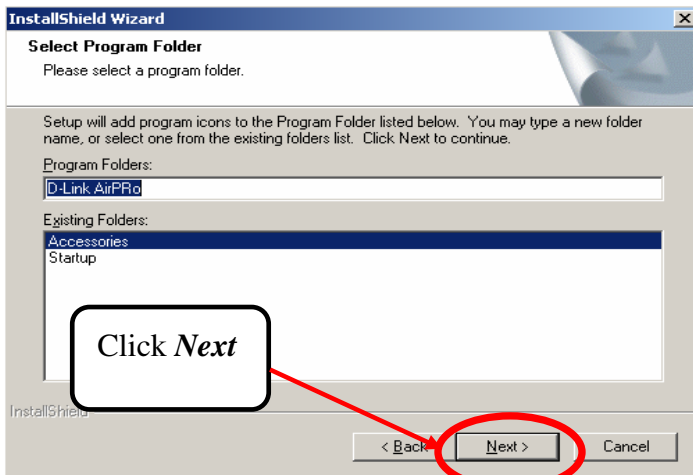
Look for the file named “Setup.exe” on the installation CD-Rom. Double-click on it to start the installation for the configuration utility.



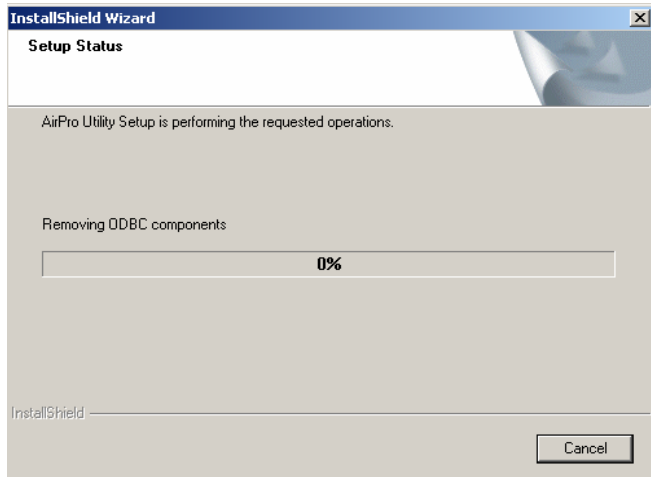
- To install to the folder C:\Program Files\D-Link\AirPro Utility. Click **Next**. Otherwise click on **Browse** to choose an alternate location.



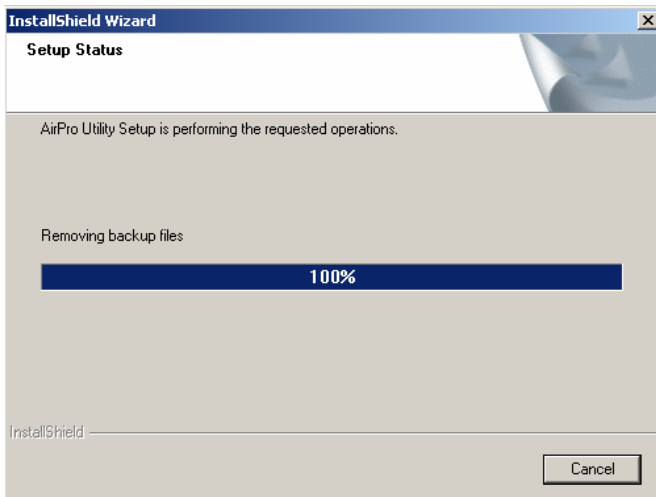
- Click **Next**.



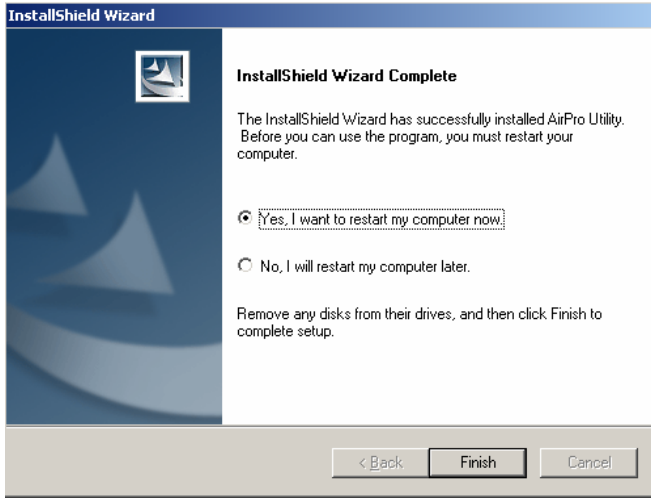
- The Setup Status screen will appear and display the progress of the installation.



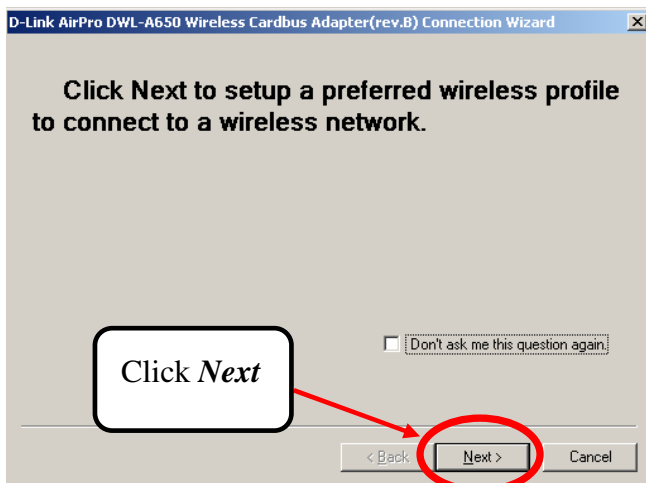
- A screen alerting you that all backup files have been removed will appear. This is the next to the last screen to appear in the installation.



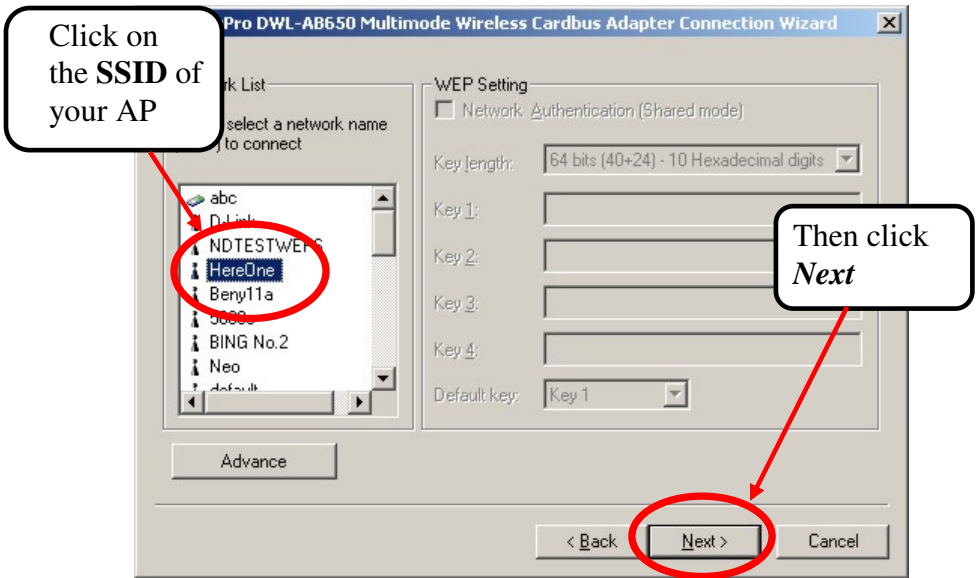
- After AirPro Utility has been successfully installed, the InstallShield Wizard will prompt you to restart your computer. Select *Yes, I want to restart my computer now*, and click *Finish*.



- After your computer has restarted, the following screen will appear. Click *Next*.



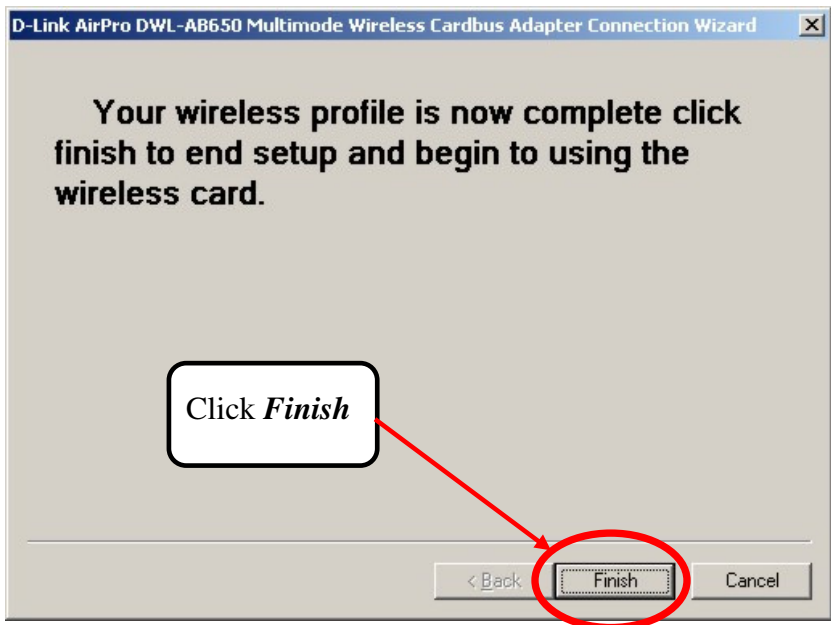
- Select the SSID (the name of an AP) by clicking on it in the **Please select a network name (SSID) to connect** dialog box, shown below. Click **Next** to put settings into effect.



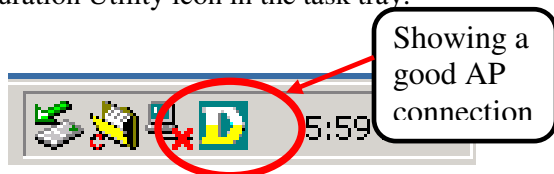
- If the Wireless Encryption Protocol (WEP) is enabled on the AP you have selected, the **WEP Setting** dialog box will become active and allow you to select the length of the WEP encryption keys as well as allowing you to enter the WEP encryption keys in the appropriate fields. All four of these keys must be *exactly* the same as the WEP encryption keys in use on the AP. Contact your network administrator if you do not know what keys are in use by the AP.
- There are three distinct modes of operation for WEP on the connection between an AP and your DWL-AB650 Cardbus Adapter, in terms of WEP encryption. The first is unencrypted. That is, WEP is disabled on both the AP and your Cardbus Adapter. The second is the **Network Authentication (Shared Mode)**. When this box is checked, the AP and your Cardbus Adapter will verify that the exact same WEP keys are in use by sending each other encrypted messages. After this authentication, all data transfer between the AP and your Cardbus Adapter will be unencrypted. The third is **Enable Data encryption**. In this mode, all data exchanged between the AP and your Cardbus Adapter is encrypted. Here, the **Enable Data encryption** mode will be selected if you enter

WEP keys and leave the *Network Authentication (Shared Mode)* click-box blank.

- All of the WEP settings (the four WEP keys and the operating mode) must be exactly the same as the WEP settings in use on the AP. You can modify these settings later, if necessary, using the configuration utility, as explained below in the section titled *Connecting to the Wireless Network* below.

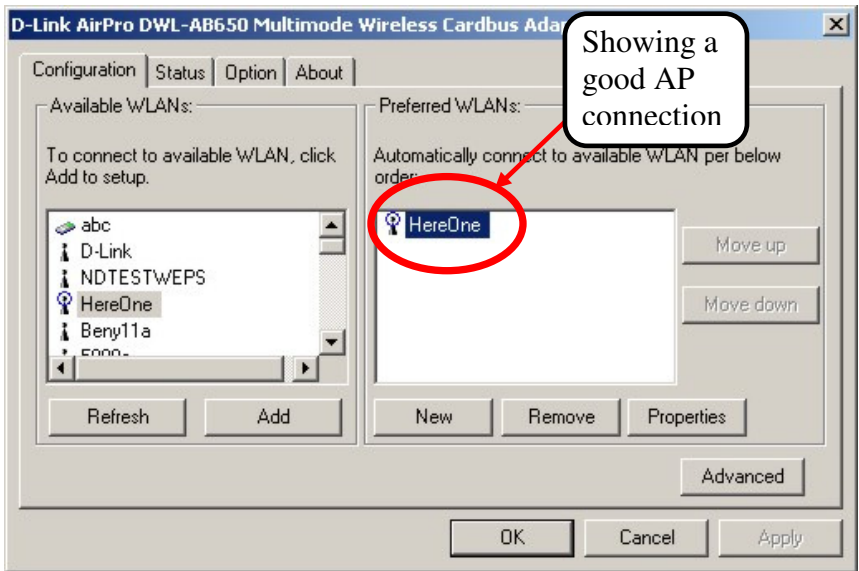


- A connection attempt between your new DWL-AB650 and the Access Point (AP) you selected will be made. While the connection attempt is being made, a red bar will oscillate vertically across the face of the D-Link AirPro Configuration Utility icon in the task tray.



- If a valid connection between your DWL-AB650 and the AP is made, the D-Link AirPro Configuration Utility icon will show a yellow color – as illustrated above.

- Double-clicking on the D-Link AirPro Configuration Utility in the task tray will open the main configuration utility. This utility can be used to verify that your DWL-AB650 Cardbus Adapter is working properly, and it can be used to change any of the configuration settings for you Cardbus Card.



- When a valid connection is made between your Cardbus Adapter and the selected AP, a small blue circle appears at the top of the icon to the left of the SSID (name) of the selected AP under the heading **Preferred WLANs**. This indicates that a valid connection (link) has been established between the selected AP and your Cardbus Adapter.
- Note that in the above example, WEP is disabled on both the selected AP and on the Cardbus Adapter (there is no encryption of the data transferred between the AP and the Cardbus Adapter). WEP settings can be entered here, or later, using the configuration utility. For an explanation of WEP settings, see the section, *Connecting to the Wireless Network* below.
- Configuring WEP as disabled is the easiest way to connect to an AP and gain access to network resources, but is not secure. For WEP to work, all of the WEP settings must be exactly the same on the AP as they are on the Cardbus Adapter.
- You have completed the installation of the DWL-AB650.

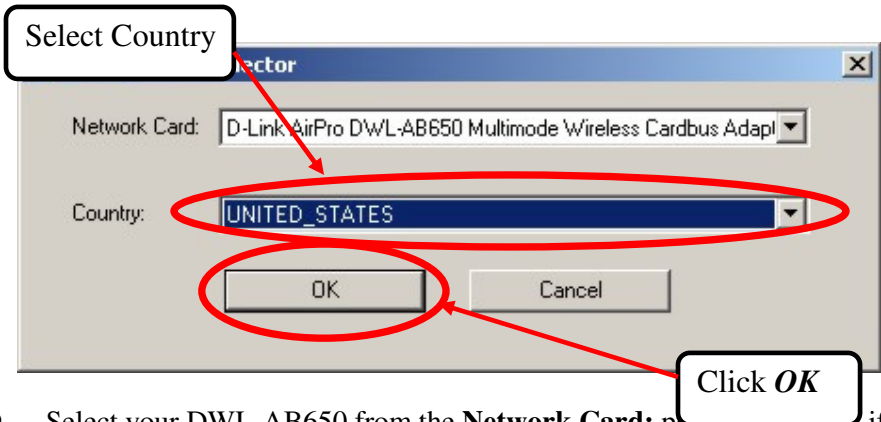
4

Select Country Utility

An additional utility is provided with your DWL-AB650 Cardbus Adapter to set the card's country location. Different countries around the world regulate the frequencies that your DWL-AB650 Cardbus Adapter uses to communicate with an AP and to transfer data. The **Select Country** utility allows you to tell the card which country you are in, and the card will then select the frequencies appropriate to that country.

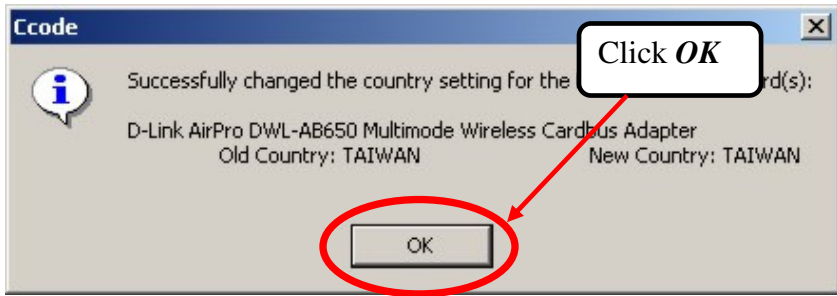
It is important to note that the Country settings of your DWL-AB650 must be the same as the country settings of an AP or another 802.11a or 802.11b Cardbus Adapter in order for communication to take place.

- From the Windows **Start** button, select **Programs**, and then **D-Link AirPro**, and finally **Select Country**. The following screen will open:



- Select your DWL-AB650 from the **Network Card:** pull-down menu, if you have multiple NICs installed in your computer.
- Select the appropriate country from the **Country:** pull-down menu.
- Click **OK**.

The **Select Country** utility will display the following screen for confirmation of the change:



- Click **OK** to make the change.

Once you have the DWL-AB650 properly installed, you will see the icon shown below that will appear in your task bar on the bottom of the screen.



5

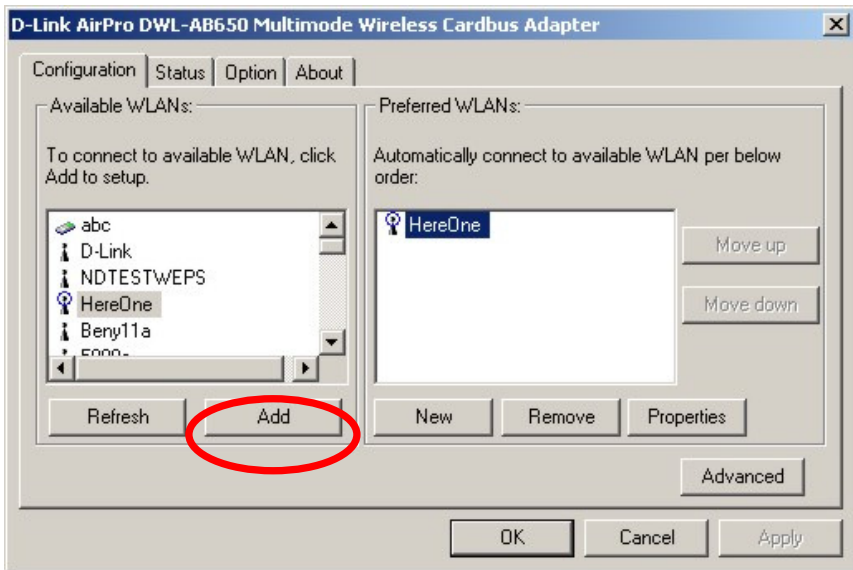
Connecting to the Wireless Network

Opening the D-Link AirPro Management Utility

Once you have the DWL-AB650 properly installed, you will see the icon shown below that will appear in your task bar on the bottom of the screen.



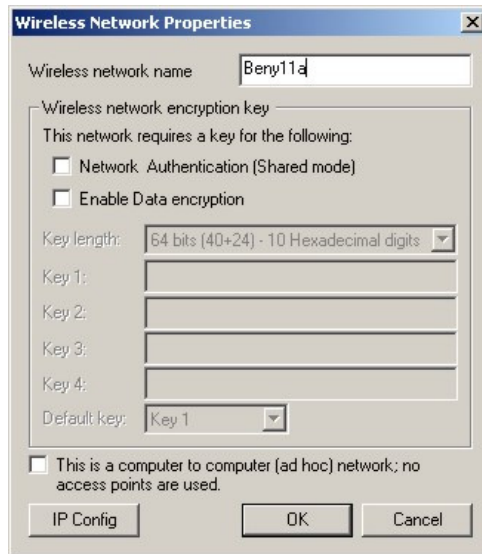
- Note that when the configuration utility is scanning for an AP to connect to, a red bar will oscillate vertically across the icon.
- Click on the icon in the task bar. You will see the first screen of the D-Link AirPro management utility, as shown below:



- The WLAN Access Point you selected to connect to – in the installation wizard above – should be shown in the **Preferred WLANs** field above. In this case, the Access Point named **HereOne** was selected and is shown.
- If you want to connect to a different Access Point, or you want to add a second Access Point to the **Preferred WLANs** list, select the name of the Access Point in the **Available WLANs** field, and click the **Add** button.
- The following “Wireless Network Properties” screen should appear. Enter WEP encryption keys to enable communication between the Access Point and the wireless cardbus adapter.

Configuring the Wireless Encryption Protocol (WEP) Keys

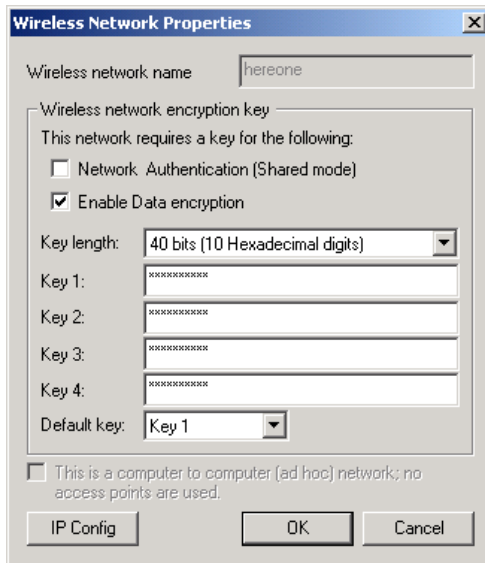
Adding an AP to the *Preferred WLANs* list, or selecting any AP from the *Preferred WLANs* list, and then clicking on the *Properties* button will open the *Wireless Network Properties* dialog box, as shown below:



The image shows a Windows-style dialog box titled "Wireless Network Properties". It has a standard title bar with a close button. The dialog is divided into several sections:

- Wireless network name:** A text box containing "Beny11a".
- Wireless network encryption key:** A section with a title and a subtitle "This network requires a key for the following:". It contains two unchecked checkboxes: "Network Authentication (Shared mode)" and "Enable Data encryption".
- Key length:** A dropdown menu set to "64 bits (40+24) - 10 Hexadecimal digits".
- Key 1, Key 2, Key 3, Key 4:** Four empty text boxes for entering the keys.
- Default key:** A dropdown menu set to "Key 1".
- Bottom section:** An unchecked checkbox "This is a computer to computer (ad hoc) network; no access points are used." followed by three buttons: "IP Config", "OK", and "Cancel".

- If the Access Point is configured to use the Wireless Encryption Protocol, the *Enable Data encryption* check-box will be checked, and the WEP encryption key fields will be open for you to enter the appropriate WEP keys, as shown below:



- If the Access Point is configured to use WEP, you must enter the appropriate WEP keys in the WEP key fields above. These WEP keys must be exactly the same as the WEP keys in use by the Access Point. If they are not exactly the same, your Cardbus Adapter will not be able to access the wired network through the selected AP.
- There are three distinct modes of operation for the connection between an AP and your DWL-AB650 Cardbus Adapter, in terms of WEP encryption. The first is unencrypted. That is, WEP is disabled on both the AP and your Cardbus Adapter. The second is the **Network Authentication (Shared Mode)**. When this box is checked, the AP and your Cardbus Adapter will only verify that the exact same WEP keys are in use by sending each other encrypted messages. After this authentication, all data transfer between the AP and your Cardbus Adapter will be unencrypted. The third is **Enable Data encryption**. In this mode, all data exchanged between the AP and your Cardbus Adapter is encrypted.
- All encryption settings, the four WEP keys, the **Network Authentication (Shared Mode)**, and the **Enable Data encryption** settings must be exactly the same on the selected AP as they are on your Cardbus Adapter for data transfer to occur. If you are unsure of the encryption settings in use on the AP, contact your network administrator.

- **Note** that if you change the WEP operating mode of the connection between the AP and your Cardbus Adapter, the WEP keys that you have entered are saved, but not used. This is indicated by “greying out” the WEP key entry fields.
- **Note** if you enter the correct WEP keys, but choose the incorrect WEP operating mode (that is, clicking the **Network Authentication (Shared Mode)** for your Cardbus Adapter when the selected AP is set to **Enable Data encryption** – or the opposite) the AirPro utility will show that your Cardbus Adapter is connected to the AP, but no data transfer will occur. Please ensure that the correct WEP operating mode is selected.

Setting the IP Address

If the Access Point you are connecting to is configured to use the Dynamic Host Configuration Protocol (DHCP), your Cardbus Adapter will automatically be assigned an IP address, subnet mask, default gateway address, and Domain Name Server (DNS) address.

On some networks, the AP will not be configured to use DHCP. These networks require you to manually enter the IP settings. Clicking on the **IP Config** button at the bottom left-hand will open the **IP Config** dialog box, as shown below:

IP Config

Obtain an IP address automatically

IP address setting

IP address: 10 . 42 . 73 . 89

Subnet mask: 255 . 0 . 0 . 0

Default gateway: 10 . 1 . 1 . 254

Obtain DNS server address automatically

DNS server address setting

Preferred DNS server: 168 . 95 . 1 . 1

Alternate DNS server: . . .

WINS address setting

Primary WINS: . . .

Secondary WINS: . . .

OK Cancel

- Clicking the *Obtain an IP address automatically* click-box instructs the Cardbus Adapter to use the DHCP protocol to obtain its IP settings from the selected AP. This will only work if the AP is also configured to assign IP addresses using the DHCP protocol.
- If the *Obtain an IP address automatically* click-box is not clicked, the *IP address setting* fields will be open for you to enter the appropriate settings.
- You will need to know the following settings:
 - IP Address
 - Subnet mask
 - Default gateway address
 - DNS server address
 - WINS address
- If you do not know the above IP settings for your computer, contact your Network Administrator.
- Click **OK** to continue.

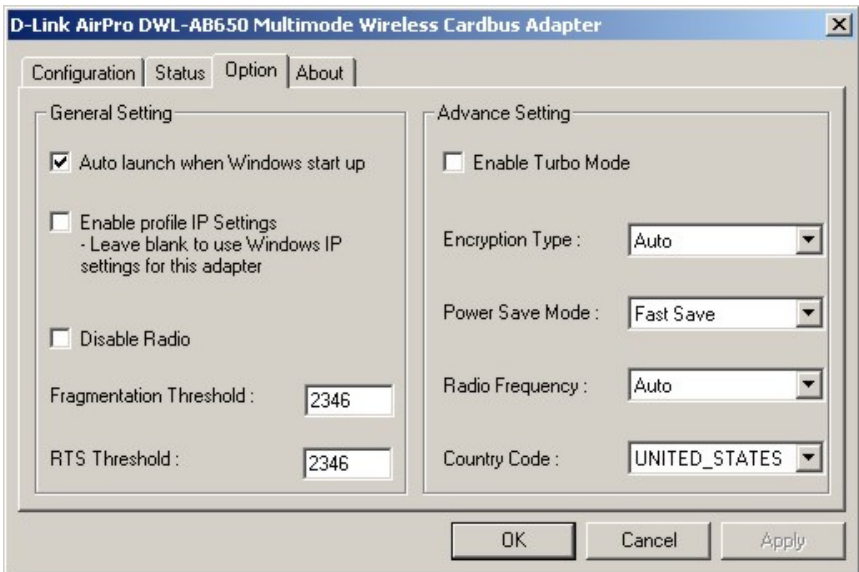
Note: the AirPro Management Utility allows you to maintain two different sets of IP settings for your new DWL-AB650 Cardbus Adapter – the IP settings entered using the AirPro Management Utility (illustrated above and referred to as *profile IP Settings*) and IP settings using Windows *Networking and Dial-up Connections* folder (located in the Windows *Control Panel*). You can switch between these two sets of IP settings using the AirPro Management Utility. Click on the *Options* tab, and then click the *Enable profile IP Settings* click-box to use the IP settings entered using the AirPro Management Utility. Leave the *Enable profile IP Settings* click-box blank to use the Windows *Networking and Dial-up Connections* IP settings. This is useful if you need to connect to two different WLAN networks that require different IP settings – such as an office WLAN and home WLAN.

Selecting the IP Settings

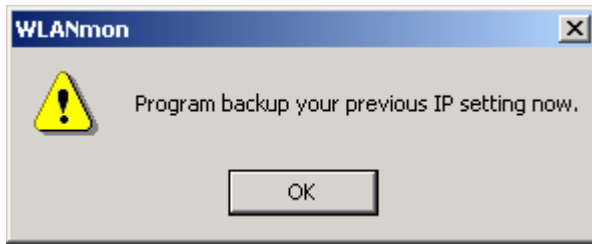
The D-Link AirPro Management Utility allows you to choose between the IP settings entered for your new Cardbus Adapter using the Management Utility (as illustrated above) or using IP settings entered using the Microsoft Windows *Networking and Dial-up Connections* folder (located in the Windows *Control Panel*)

The default setting of the D-Link AirPro Management Utility is to use the Windows IP settings. To use the settings entered into the AirPro Management Utility, you must click on the *Option* tab, and then click the *Enable profile IP Settings* click-box. If this click-box is left blank, the AirPro Management Utility will use the IP settings entered using Windows *Networking and Dial-up Connections* folder.

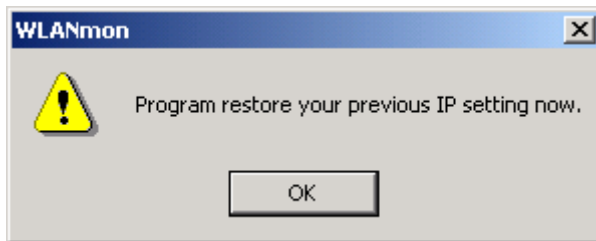
Note: if you use the *Enable profile IP Settings* option, the AirPro Management Utility will save the Windows IP settings for the Cardbus Adapter. This allows you to have two different IP settings for the same Cardbus Adapter – one for the office, and one for the home, for example.



The AirPro Management Utility will display the following dialog box to confirm that the Windows IP settings are being backed-up:



When you un-click the *Enable profile IP Settings* click-box, the AirPro Management Utility will display the following dialog box to confirm that the Windows IP settings will be used. Your *profile* IP settings will be saved.



- Click *OK*.

Technical Support

The most recent software and documentation are available on the **D-Link** website.

D-Link provides free technical support for customers within the United States during the warranty period on this product.

U.S. customers can contact D-Link Technical Support through our web site, or by phone.

D-Link Technical Support over Telephone:

(877) 453-5465

24 hours a day, seven days a week.

D-Link Technical Support over the Internet:

<http://support.dlink.com>