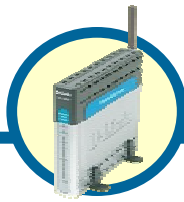


D-Link Quick Installation Guide

This product can be set up using any current web browser, i.e., Internet Explorer 6 or Netscape Navigator 6.2.3.



DSL-G604T
Wireless ADSL Router

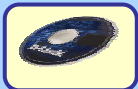
Before You Begin

1. If you purchased this Router to share your high-speed Internet connection with other computers, you must have an established Internet account from an Internet Service Provider (ISP).
2. It's best to use the same computer that is connected to your router for configuring the DSL-G604T Wireless ADSL Router. The DSL-G604T acts as a DHCP server and will assign all the necessary IP address information on your network. See at the Quick Installation Guide or the Manual on the CD-ROM for setting each network adapter to automatically obtain an IP address.

Check Your Package Contents



- **DSL-G604T**
shown with antenna and stand



- **CD-Rom**
containing Manual and Warranty



- **Ethernet Cable**
(CAT5 UTP Straight-Through)



- **ADSL Cable** (standard telephone cable)



- **12V, 1.2A**
Power Adapter

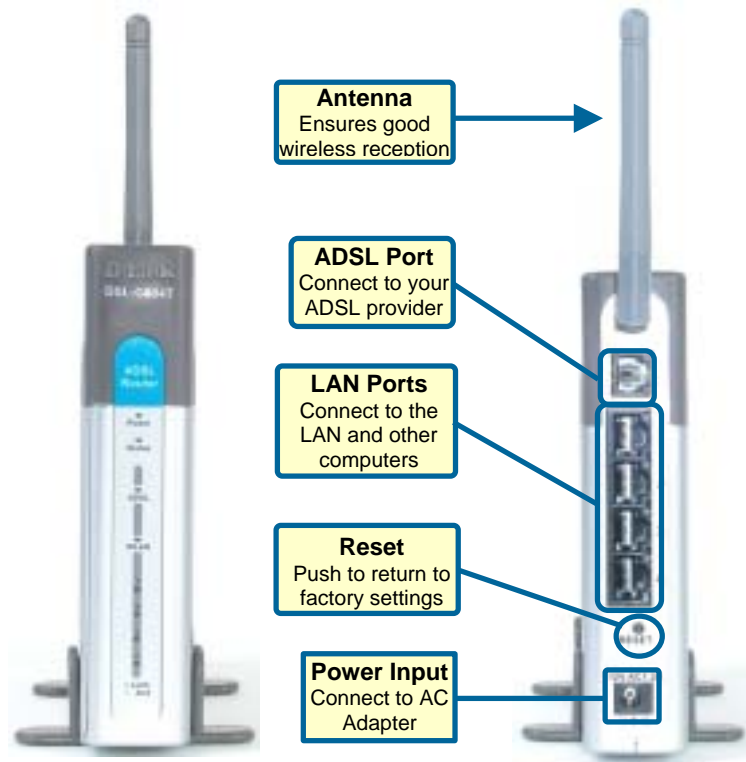


Using a power supply with a different voltage rating will damage and void the warranty for this product.

If any of the above items is missing, please contact your reseller.

©2004 D-Link Systems, Inc. All rights reserved. Trademarks or registered trademarks are the property of their respective holders. Software and specifications subject to change without notice.
DSL-G604T Wireless ADSL Router

1 Connecting the Router to your Computer



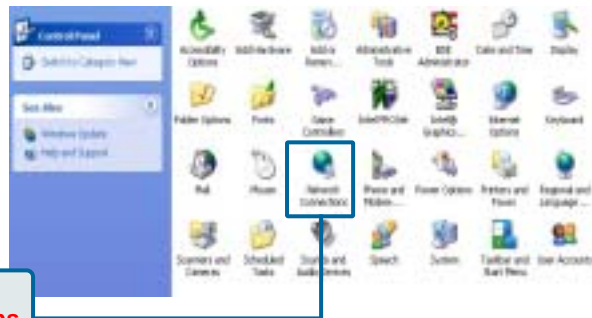
- A.** First, connect the power adapter to the power input at the back panel of the DSL-G604T and then plug the other end of the power adapter to a wall outlet or power strip. On the front of the device, the Power LED will turn ON to indicate proper operation.
- B.** Insert one end of the cable into an Ethernet (LAN) port on the back panel of the DSL-G604T and the other end of the cable to an Ethernet Adapter or available Ethernet port on your computer.
- C.** Insert the telephone cable included with the Router into the ADSL port, then connect the cable to your telephone line.
- D.** Check the LED display on the front of the Router to confirm that the connections have been made.

2 Configure IP Settings

To connect to the network, make sure the network adapter in your computer is configured properly. Here's how to configure the network adapter to obtain an IP address automatically for the DSL-G604T Wireless ADSL Router.

For Microsoft Windows XP

Go to **Start** > select **Settings** > click **Control Panel** > **Double-click** on the **Network Connections** icon

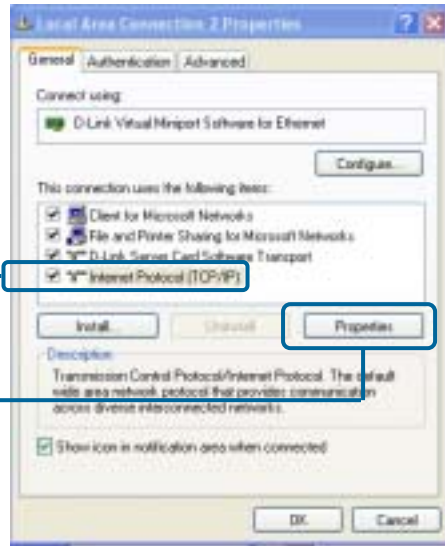


Right-click the Local Area Connection icon, and then select **Properties**.



The dialog box displays with a list of currently installed network items.

Click **Internet Protocol (TCP/IP)**



Make the choice to get IP settings assigned automatically.

Select **Obtain an IP address automatically**



Click **OK**

3 Connecting Additional Computers To The DSL-G604T Wireless ADSL Router

Using additional Ethernet (CAT5 UTP) cables, connect your Ethernet-equipped computers to the LAN ports on the back panel of the DSL-G604T.

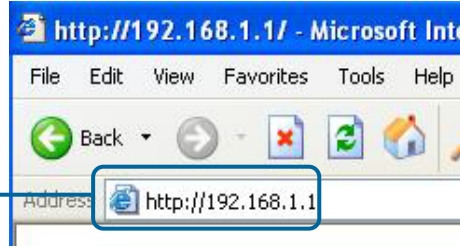
When you have completed the steps in this *Quick Installation Guide*, your connected network should look similar to this:



4

Web Configuration Utility

Open your Web browser and type **http://192.168.1.1** into the URL address box. Press **Enter** or **Return**.



The **Home/Login** page appears.

When you first log in, your Login Name is **admin**; your password is also **admin**. These may be changed later.



Click **Login**

The Home screen appears. Click on the **Setup** tab to bring up the Setup menu.

Click **Setup**



Click the **Connection 1** button to go to the configuration menu to make the Internet connection.

Click **Connection 1**



5 Configuring the WAN Connection

In the **Connection 1** window, type the **Username** and **Password** used to verify the identity of your ISP account. Click the **Apply** button when you have entered the information.



Configure Connection 1 for PPPoE

PPP or Point-to-Point protocol is a standard method of establishing a network connection/session between networked devices. It may be worthwhile for the user to change the default name of Connection 1 to something that states what connection type is being used, for example, *WAN_PPPoA*, the name used in the example below. Notice the VPI and VCI values are included in the name. It is not functionally necessary to change the name of the connection, this is done merely to provide descriptive reference.



To configure Connection 1 for PPPoE, follow the steps listed below. Some of the settings do not need to be changed the first time the device is set up, but can be changed later if you choose.

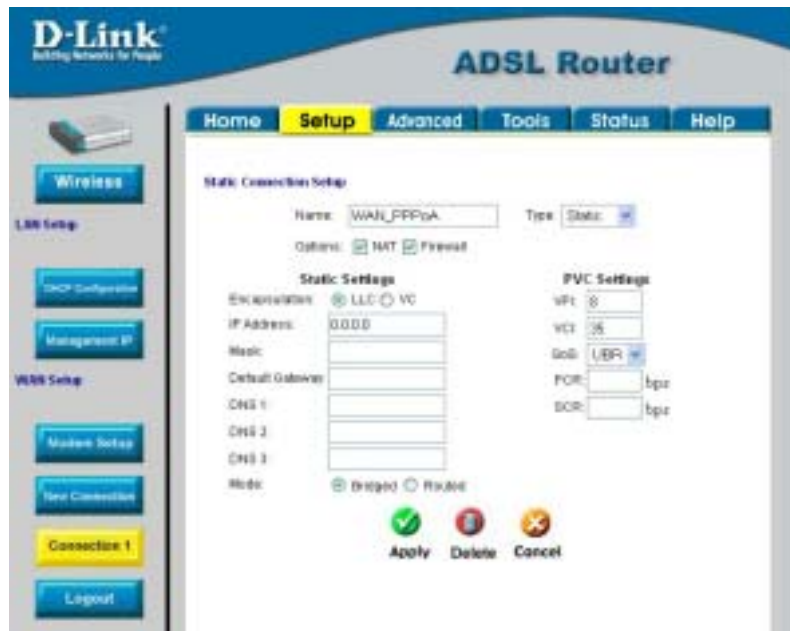
1. Click the **Connection 1** button under **WAN Setup** to view the default **PPPoA Connection Setup** configuration menu.
2. Select **PPPoE** from the **Type**: pull-down menu. The menu will blink momentarily.
3. Type in a **Name**: for the connection or use the default name in the space provided (*WAN_PPPoA* used in the above example).
4. Under **Options**, enable **NAT** and/or **Firewall** by selecting the corresponding selection box.
5. If you are told to change the **VPI** or **VCI** values, type in the values given to you by your service provider. Many users will be able to use the default settings.
6. Leave the default **QoS** values if you are unsure or the ISP did not provide this information.

7. Do not change the **PCR** or **SCR** values unless you are required to do so. If you are told to change these, type in the values given to you by your service provider.
8. Type the **Username** and **Password** used to verify the identity of your account. Typically, the Username is an account number assigned by your ISP and appears in the form *account#@serviceprovider.com*, while the Password may have been chosen by the account holder. For most users, the remaining settings will not need to be changed. See your ISP for further information.
9. Click the **Apply** button when you have entered all the information. The web browser will briefly go blank. You are now finished changing setting for the primary WAN connection known as Connection 1. It is now necessary to save the changes you just made and restart the Router.
10. To save the changes made to Connection 1, click the **Tools** tab and then click on the **System Commands** button. Click on the **Save All** button to store the configuration settings. Click on **Back** button to return to the System Commands menu.

Check the WAN connection status. Click the **Status** tab and then the **Connection Status** button. Look under **WAN** to view the **State** of Connection 1, it should read *Connected*. If the WAN connection state does not appear to *Connected* after a few minutes, go back to the Connection 1 Setup menu, check the settings and make sure they are correct.

Configure Connection 1 for PPPoA

PPP or Point-to-Point protocol is a standard method of establishing a network connection/session between networked devices. Different forms of PPP include PPPoA and PPPoE (discussed below) involve an authentication process that requires a username and password to gain access to the network. PPPoA (PPP over ATM) as described in RFC 2364, is a method of using PPP on an ATM network. ATM is used for many types of telecommunications services including ADSL. To configure the WAN connection for PPPoA, perform the steps listed below. Some of the settings do not need to be changed the first time the device is set up, but can be changed later if you choose.



To configure the default connection type (PPPoA) for Connection 1, follow the steps listed below. To change the connection type of Connection 1 to an alternative type follow the instructions according to the desired type as described below in Change the Connection Type.

1. Click the **Connection 1** button under **WAN Setup** to view the **PPPoA Connection Setup** menu pictured in the example above.
2. Type in a **Name** (*WAN_PPPoA* has been entered here) for the connection or use the default name in the space provided.
3. Under **Options**, enable **NAT** and/or **Firewall** by selecting the corresponding selection box.
4. If you are told to change the **VPI** or **VCI** values, type in the values given to you by your service provider. Many users will be able to use the default settings.
5. Leave the default **QoS** values if you are unsure or the ISP did not provide this information.
6. Do not change the **PCR** or **SCR** values unless you are required to do so. If you are told to change these, type in the values given to you by your service provider.

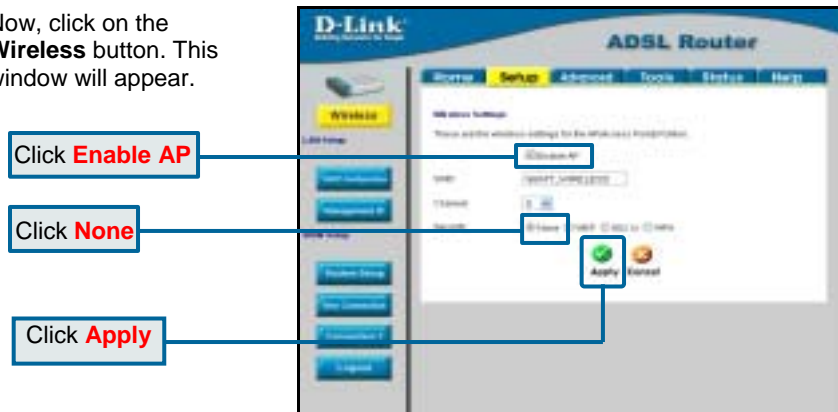
7. Type the **Username** and **Password** used to verify the identity of your account. Typically, the Username is an account number assigned by your ISP and appears in the form *account#@serviceprovider.com*, while the Password may have been chosen by the account holder. For most users, the remaining settings will not need to be changed. See your ISP for further information.
8. Click the **Apply** button when you have entered all the information. The web browser will briefly go blank. You are now finished changing setting for the primary WAN connection known as Connection 1. It is now necessary to save the changes you just made and restart the Router.
9. To save the changes made to Connection 1, click the **Tools** tab and then click on the **System Commands** button. Click on the **Save All** button to store the configuration settings. Click on **Back** button to return to the System Commands menu.
10. Check the WAN connection status. Click the **Status** tab and then the **Connection Status** button. Look under **WAN** to view the **State** of Connection 1, it should read *Connected*. If the WAN connection state does not appear to *Connected* after a few minutes, go back to the Connection 1 Setup menu, check the settings and make sure they are correct.

Change the Connection Type

The default connection protocol used for the Router is Point-to-Point Protocol over ATM (PPPoA). The menu used to configure a PPPoA connection is the first menu to appear when you click on the **Connection 1** button in the Setup menu. The alternative connection types supported by the Router are the **PPPoE** (PPP over Ethernet), **CLIP** (Classical IP over ATM or IPoA), **DHCP** (for WAN), **Static** (IP for WAN), and **Bridge** connection types. There are two ways you may configure the WAN connection to use these alternative types. You can create a **New Connection** using the alternative connection type or you may configure the Connection 1 settings to use the connection type of choice.

6 Wireless Configuration

Now, click on the **Wireless** button. This window will appear.



For first-time setup, accept the default settings for **SSID** and **Channel**, and bypass security by clicking **None**. These settings may be changed later by following instructions as given in the **User's Guide**.

Important Note: This Quick Installation Guide is designed to allow a first-time user to install and operate the Router easily, in order to ensure that everything is in working order. For more advanced configuration settings, particularly to do with security parameters, please consult the **User's Guide** that accompanies the Router.