

Nuclias Connect Hub Plus

A compact, cost-effective solution that can manage up to 50 Nuclias Connect access points and 20 D-Link network cameras, taking away the need for a dedicated PC or server.

DNH-200

All-In-One Solution

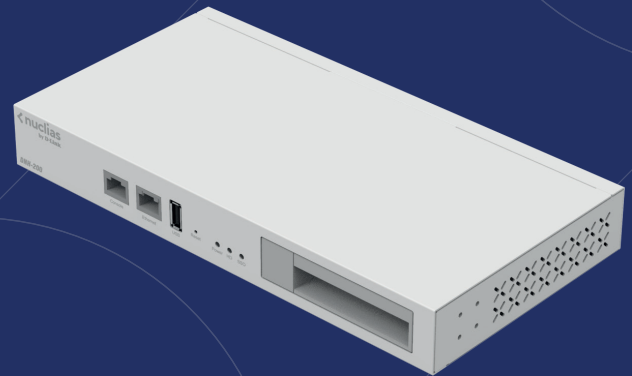
- Standalone network video recorder plus wireless controller pre-loaded with the Nuclias Connect software
- Central management of up to 20 D-Link network cameras and/or 50 Nuclias Connect access points
- Access locally or remotely through the Nuclias Connect web portal

Wireless Controller

- Centrally manage up to 50 APs, complete with a multi-tenant structure that provides multi-layer management authority
- Supports a full range of network management, security, monitoring and troubleshooting features as well as access management tools

Network Video Recorder

- View real-time and recorded video of up to 20 cameras
- Supports H.265 and H.264 compression formats
- SATA 2.5" HDD interface, up to 5 TB capacity
- Continuous, manual, scheduled, or event-based recording with automatic overwrite



Nuclias Connect



Multi-Function Management for Network Devices and IP Cameras



Intuitive Interface



Multi-Tenant & Role-Based Administration



Supports H.264 and H.265 IP Cameras



Inexpensive Hardware Controller



Searchable Event Log and Change Log



Supports 4K Camera Resolutions



Traffic Reporting & Analytics



Authentication via Customizable Captive Portal, 802.1x and RADIUS Server, POP3, LDAP



Standalone Solution



Remote Config. & Batch Config.



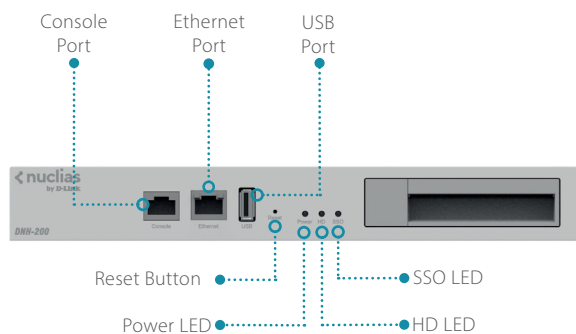
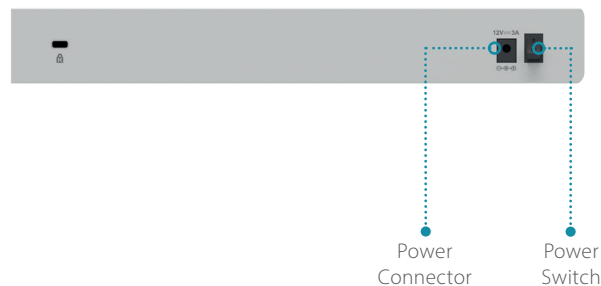
Payment Gateway (Paypal) Integration and Front-Desk Ticket Management

General

Size	19-inch, 1U rack-mountable
Interfaces	1 x 10/100/1000 Mbps Ethernet Port 1 x RJ45 Console Port 1 x USB 2.0 Port
LEDs	Power, HDD, SSO (Single Sign-On)
Cooling	Fanless

Functionality

Network Management	D-Link's Nuclias Connect Web (HTTPS) Telnet Secure Telnet (SSH)
Managed Devices	50 x Access Points (APs) 20 x IP Cameras
Supported Cameras	D-Link Vigilance cameras D-Link cameras with ONVIF Profile S support
Live View/ Playback	Supports camera resolutions up to a maximum of 3840 x 2160
System Requirements for Web Interface	H.264 video stream Microsoft Edge/Chrome/Safari/Firefox H.265 video stream Microsoft Edge/Safari
Recording Performance	Maximum Recording Bitrate: 90 Mbit/sec High-Quality Stream: Up to 4K / 30 fps Low-Quality Stream: 360p / 15 fps
Camera Discovery	ONVIF WS-Discovery
Audio and Video Recording	Synchronized audio and video recording
Video Codec	H.264, H.265
Audio Codec	AAC
Video Settings	Resolution Quality Bitrate Frame rate Enable audio Video profile selection
Remote Live View	Supported via browser and Nuclias Protect App
Live View Control	PTZ Control (Preset, Patrol) Focus Full Screen Auto Scan Manual Audio Enable/Disable Audio Volume OSD Enable/Disable
Playback Control	Normal Fast forward 2x/4x/8x/16x Fast rewind 2x/4x/8x/16x Step forward/back OSD toggle Audio toggle Audio volume



Overwrite Recording	Auto recycling when disk storage is full	
Video Export	MP4	
System Time	Manual Input	
System Status	IP Camera and AP device status System status HDD status	
Network Service Protocols	IPv4/IPv6 Dual Stack DHCP Client HTTPS Server NTP Server/Client	RTP/RTSP/RTCP SMTP Client FTP Client

Physical

Dimensions (W x L x H)	270 mm x 140 mm x 35 mm	
Weight	0.865 kg	
Mounting Options	Standard 19" rack mounting	
Power Input	12V / 3A, External Power Adapter	
Max. Power Consumption	19 W	
Operating Temperature	0° to 40°C	
Storage Temperature	-20° to 70°C	
Operating Humidity	Maximum 90% (non-condensing)	
Storage Humidity	Maximum 95% (non-condensing)	
Mean Time Between Failure (MTBF)	>300,000 hrs	
EMI	FCC Class A CE Class A RCM	
Safety	LVD RoHS WEEE Directive	

Software Features

IPv4/IPv6 Dual Stack	IPv4/IPv6 Dual Stack support	
DHCP Client	DHCP support	
D-Link DDP	D-Link Discovery Protocol v5	
HTTPS Server	HTTPS server use for browser access	
NTP Server/Client	NTP client and server use for time synchronization	
RTP/RTSP/RTCP	RTP/RTSP/RTCP for streaming transmission and control	
mDNS and DNS-SD	mDNS and DNS-SD support	
SMTP Client	SMTP client support	
FTP Client	FTP client support	
Nuclias Connect SSO	Nuclias Connect single sign-on support	
D-Link FOTA Service	Supports over-the-air firmware upgrade	
OSD	Supports UTF-8 text and video time stamps	
Mobile App Support	Supports Nuclias Connect and Nuclias Protect mobile apps (iOS / Android)	
File Format for HDD	Hard disk format and EXT4 file system features	
Flash Drive Support	Flash drive format and FAT32 flash drive file system features	
Overwrite Recording	Auto recycling recording when disk is full	

File Export	<ol style="list-style-type: none"> 1. Export video to MP4 format 2. Export images to JPG format
User Account Management	User account management, including account creation and deletion, and feature authorization for NVR and camera feature(s), e.g. PTZ, live view, playback, etc
System Time Setting	Supports manual adjustment
System Status	Displays: <ol style="list-style-type: none"> 1. IP Camer and AP device status 2. System status 3. HDD status
Languages (Web UI)	English, French, Deutsch, Italian, Spanish, Korean, Japanese, Traditional Chinese, Simplified Chinese, Russian, Turkish
Nuclias Connect SSO	Supports Nuclias Connect SSO: <ol style="list-style-type: none"> 1. Log in with Nuclias Connect SSO account 2. Supports Nuclias Connect and Nuclias Protect mobile apps for remote access 3. Supports Nuclias Connect Portal for remote access
FW Update	Upgrade firmware via USB port, browser or FOTA service
Recovery Mode	Supports recovery mode via USB port
NVR Discovery	Supports D-Link DDP and mDNS to search NVR(s)
Camera Discovery	Supports ONVIF WS-Discovery to search IP camera(s)
Audio and Video Recording	Supports audio & video recording in synchronization
Video and Audio Setting	Supports audio & video configuration
Alarm Recording	Supports motion detection and digital input alarm recording: <ul style="list-style-type: none"> Pre-alarm: 10 sec / per channel Post-alarm: 10 sec / per channel
Recording Mode	Record by schedule, manual, always, and event-based recording Motion-triggered recording
Live View	Supports a maximum of concurrent 20 live view video channels from IP camera(s) Allows users to switch between high/medium/low streams from 3 different video profiles
Playback	Supports a maximum of 20 concurrent video channels with playback features from IP camera(s)