

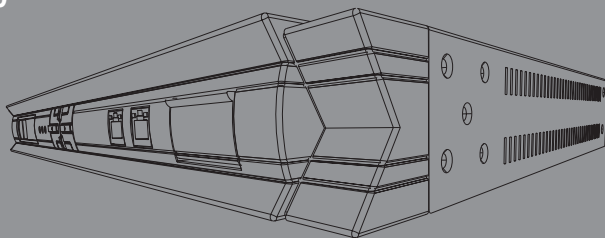


NETDEFEND

INFORMATION SECURITY GATEWAY(ISG)

This Quick Guide will guide you through the installation process. You are only moments away from using your new D-Link Network Security Product

DFL-M510



1. Before You Begin

1.1 Check Your Package Contents.....	1
1.2 DFL-M510 Introduction.....	2
1.3 DFL-M510 Architecture.....	3

2. Identifying Components

2.1 Front View.....	4
2.2 Rear View.....	5
2.3 LCD Navigation Button Description.....	5
2.4 LCD Panel	6
2.5 Status LEDs	7

3. Connecting the DFL-M510

3.1 Setting up without firewall.....	8
3.2 Setting up with firewall.....	9

4. Configure DFL-M510

4.1 Connect to DFL-M510.....	10
4.2 Setup Wizard.....	13

5. WARRANTY

Warranty.....	16
---------------	----

DFL-M510 Before You Begin

1

1.1 Check Your Package Contents

Thank you for purchasing DFL-M510 Information Security Gateway. Before continuing, please check the contents of the product package. This product package should contain the following items:

- One (1) DFL-M510 Information Security Gateway
- One (1) Power Cord
- One (1) Console Cable (RS-232 cable)
- One (1) Ethernet (CAT5 UTP/Straight Through) Cable
- One (1) CD-ROM (containing QIG/Manual)
- Two (2) Rack Mount Brackets

If anything is missing, please contact your reseller immediately.



DFL-M510



Power Cord



Console Cable



Rack Mount Brackets



Ethernet Cable



CD-ROM

1.2 DFL-M510 Introduction

DFL-M510 is a transparent network device which is installed in In-Line mode with “Hardware Bypass” function, without any change of current network architecture to control/manage information traffic flow (IM, P2P and Streaming Media ... etc.) from intranet and detect/drop the traffic with health concerns (Trojan, Illegal agent and Network worm ... etc.) Based on the policy rules applied to specific Group/Hosts/subnet.

DFL-M510 provides very friendly user-interface to configure. D-Link develops this product based on easy-to-use principle without compromising any security protection issue.

1.3 DFL-M510 Architecture

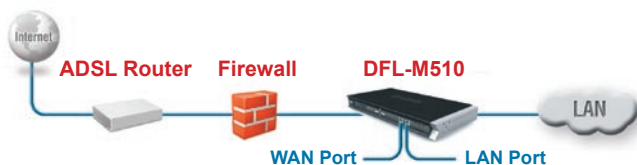
Without Firewall

When there is no firewall involved, we suggest to place DFL-M510 behind the router or ADSL modem. Below illustrates the recommended structure.



With Firewall

When there is a firewall, placing the DFL-M510 between the firewall and the LAN is recommended. The recommended structure is illustrated as following.



Identifying Components

2

The following illustrations show the front view, rear view, LCD Panel and status LEDs of the DFL-M510.

2.1 Front View



1. See "LCD Panel" below
2. See "Status LEDs" below
3. LCD Navigation Buttons
- * 4. WAN Port with hardware bypass
- * 5. LAN Port with hardware bypass
6. Console Port

Note:





* **Hardware Bypass** – A built-in failure-proof function of the DFL-M510. In an unlikely event of a hardware failure or an accidental power-off, your network traffic will automatically skip (bypass) the DFL-M510 and flow normally as if a DFL-M510 was not deployed on your network at all in the first place.

2.2 Rear View



1. Power socket
2. Power switch

2.3 LCD Navigation Button Description

Button	Name	Description
	UP	Scroll Up
	Down	Scroll Down
	ESC	Go back to the previous screen
	Enter	Next screen

2.4 LCD Panel

Main Menu	Sub-Menu	Description
Device Status	System Info.	Firmware Ver.: Policy Ver.: Policy Number: Current Date: Current Time: Dev. Up Time: CPU Load: Memory Usage: Current Session:
	Traffic Info.	WAN RX: WAN Drop: LAN RX: LAN Drop: Traffic Level:
	Alert Monitor	Traffic Alert:
Device Config	IP Info.	Device Name: IP Address: IP Mask: Gateway IP: DNS IP: Operation Mode:
	Interface Info.	LAN Link Mode: LAN Stealth: WAN Link Mode: WAN Stealth:
Reset	Reset Confirm	
Reboot	Reboot Confirm	

2.5 Status LEDs

LED	Color	Status	Description
Power	Green	On	DFL-M510 is powered on
		Off	DFL-M510 is powered off
System	Green	On	DFL-M510 is ready
		Off	DFL-M510 is not ready
Bypass	Red	On	Hardware Bypass is enabled
		Off	Hardware Bypass is not enabled
Inbound (LAN)	Green (Left)	On	Link OK and the speed is 100Mbps
		Off	Link OK and the speed is 10Mbps
	Green (Right)	On	Link Present
		Off	No packets Send/Receive
	Blinking	Port is sending or receiving data	
Outbound (WAN)	Green (Left)	On	Link OK and the speed is 100Mbps
		Off	Link OK and the speed is 10Mbps
	Green (Right)	On	Link Present
		Off	No packets Send/Receive
	Blinking	Port is sending or receiving data	

The client's network structure can be set up with/without a firewall.

3.1 Setting up without a firewall

If your network is not behind a firewall, the DFL-M510 is placed between the ADSL or router and switch. Refer to the following:

- Connect a UTP cable from the ADSL router to the WAN port on the DFL-M510.
- Connect a UTP cable from the LAN port on the DFL-M510 to the switch.



Note:

Transparent Device – The DFL-M510 is a “transparent device” in the sense that it can be deployed directly behind a firewall without affecting your existing network configuration and architecture. It can be added to or removed from your network anytime without requiring you to re-configure or reset your network.

3.2 Setting up with a firewall

If your network is behind a firewall, the DFL-M510 is placed between firewall and LAN. Refer to the following:

- Connect a UTP cable from the firewall to the WAN port on the DFL-M510.
- Connect a UTP cable from the LAN port on the DFL-M510 to the LAN.



Note:

If you are deploying DFL-M510 over the VLAN (802.1q) network, you have to configure the VLAN setting before putting in the network. Please refer to the manual for detail configuration in VLAN environment.

Configure DFL-M510

4

The DFL-M510 GUI is a Web-based application that allows you to manage the DFL-M510. The GUI is a java applet application. Before accessing the GUI from any PC, note the following:

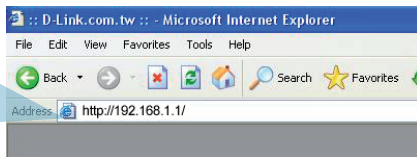
- You must install Java Runtime (1.4.2 or above) as described below
- Pentium 4, 2.0 GHz
- 512 MB RAM

Refer to the following to log on to the DFL-M510.

4.1 Connect to DFL-M510

After placing the DFL-M510 within your network transparently, you could use web browser to connect the DFL-M510 with Java Runtime installed.

Activate your browser.
Then type the default IP (<http://192.168.1.1>) and press enter.



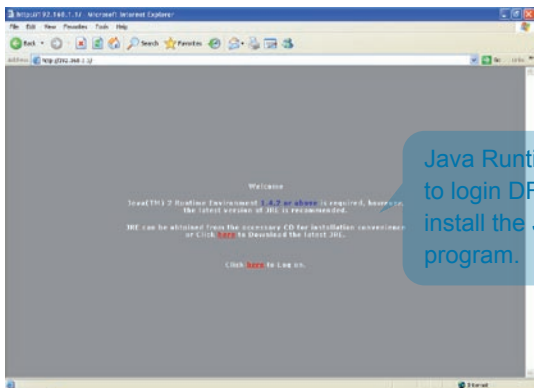
Note:



1. The IP address shown in the example above is the default setting. If you have changed the IP address of the DFL-M510 to conform to a network, then input that IP address in the web browser, instead of the default IP address shown.
2. For the best view of this GUI, please adjust your screen resolution to 1024X768.

DFL-M510 Welcome page.

Either install the Java Runtime from the accessory CD first or login to DFL-M510 directly.



Click “**Always**” to continue and prevent screen appearing again, The login screen appears.



Login to the DFL-M510 with ID/Password.



The image shows a web browser window titled "Authentication Required". The main text says "Please enter your user name and password". There are three input fields: "User name:", "Password:", and "Language:". The "Language:" dropdown menu is set to "English". Below the fields is a "Login" button. To the right of the input fields is a large padlock icon. At the bottom of the dialog, it says "Optimized for Internet Explore6, Firefox and Netscape8".

type the default ID/Password
ID: admin
Password: admin
select the preferred language, and then click **Login**

The computer requires to start Java Runtime therefore the log-on time would be around 20 seconds.



Note:

The Setup Wizard would be running automatically when you login into DFL-M510 first time.

4.2 Setup Wizard

Running the Setup Wizard

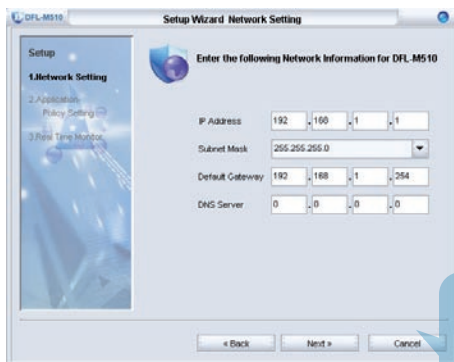
Welcome to the DFL-M510 Setup Wizard.

This wizard will guide you through the setup of your DFL-M510

Step1 - Setup Wizard welcome page

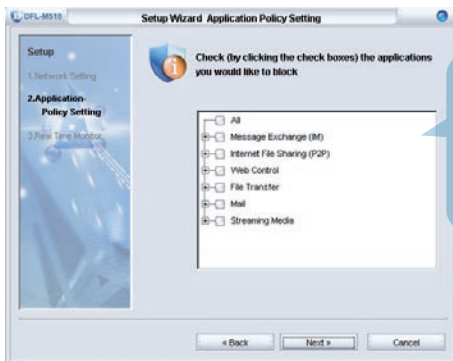


Step2 - Set up the IP/Subnet mask and default gateway



4.2 Setup Wizard (Continued)

Step3 - Choose the Applications you want to block



Choose the applications that you want to block in your network.
Click **Next**

Step4 - Go to Real-Time Monitor or back to configuration page



Select **Yes** to go to Real-Time Monitor directly or **No** to back to configuration page
Click **Finish**

4.2 Setup Wizard (Continued)

Step5 - Select "Yes" to go to Real-Time Monitor.



Warranty

FCC Warning

This equipment has been tested and found to comply with the limits for a Class A digital device, pursuant to Part 15 of the FCC Rules. These limits are designed to provide reasonable protection against harmful interference when the equipment is operated in a commercial environment. This equipment generates, uses, and can radiate radio frequency energy and, if not installed and used in accordance with this manual, may cause harmful interference to radio communications. Operation of this equipment in a residential area is likely to cause harmful interference in which case the user will be required to correct the interference at his own expense.

CE Mark Warning

This is a Class A product. In a domestic environment, this product may cause radio interference in which case the user may be required to take adequate measures.

Warnung!

Dies ist ein Produkt der Klasse A. Im Wohnbereich kann dieses Produkt Funkstörungen verursachen. In diesem Fall kann vom Benutzer verlangt werden, angemessene Massnahmen zu ergreifen.

Precaución!

Este es un producto de Clase A. En un entorno doméstico, puede causar interferencias de radio, en cuyo caso, puede requerirse al usuario para que adopte las medidas adecuadas.

Attention!

Ceci est un produit de classe A. Dans un environnement domestique, ce produit pourrait causer des interférences radio, auquel cas l'utilisateur devrait prendre les mesures adéquates.

Attenzione!

Il presente prodotto appartiene alla classe A. Se utilizzato in ambiente domestico il prodotto può causare interferenze radio, nel cui caso è possibile che l'utente debba assumere provvedimenti adeguati.

VCCI Warning

この装置は、クラス A 情報技術装置です。この装置を家庭環境で使用すると電波妨害を引き起こすことがあります。この場合には使用者が適切な対策を講ずるよう要求されることがあります。

BSMI Warning

警告使用表

這是乙類的資訊產品，在居住的環境中使用時，可能會造成射頻干擾，在這種情況下使用者會被要求採取某些適當的對策。