



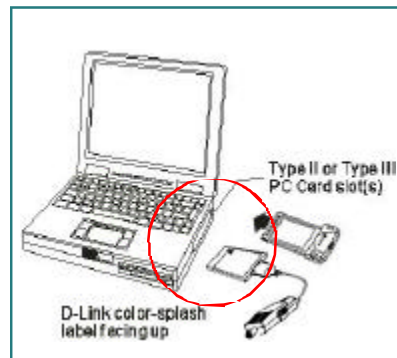
Quick Install Guide for Windows 2000 DFE-680TX/TXD 10/100 Ethernet PC Card

Please note that you will need Cat5, RJ-45 cable to complete your network installation. Please see Appendix B for more information regarding cables.

1 Inserting the DFE-680TX/TXD 10/100 Ethernet PC Card into your laptop.

With the laptop turned **ON**, insert the DFE-680TX/TXD 10/100 Ethernet PC Card into your laptop.

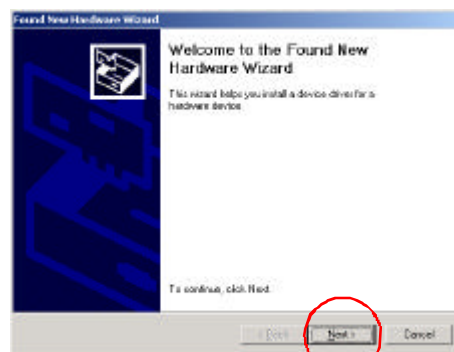
Gently insert the front end (with the yellow arrow on the card pointing toward the computer) of the PC Card all the way into the PCMCIA slot on your laptop, until it is firmly seated.



2 Running the Found New Hardware Wizard

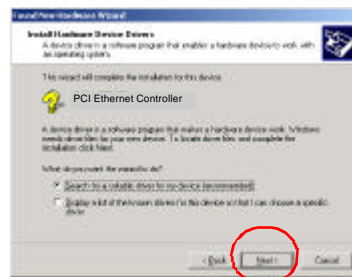
The following Welcome. Screen will be displayed.

Click Next.



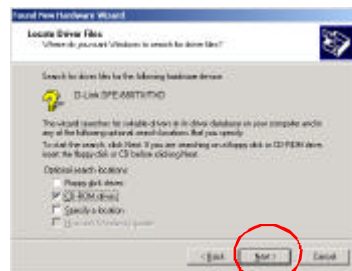
2 Running the Found New Hardware Wizard *continued*

Select Search for a suitable driver for my device at this screen.



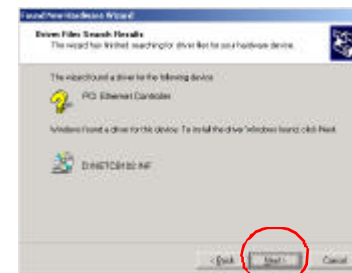
Click Next to continue the installation.

At the following screen, choose CD-ROM drive. Insert the CD that is included with the PC Card.



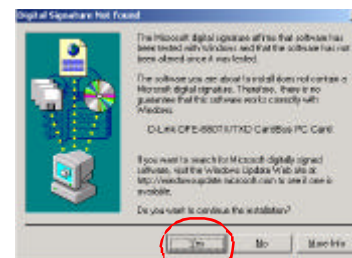
Click Next.

The Hardware Wizard will find the driver for your PC Card.



Click Next, to continue.

The following screen will appear.



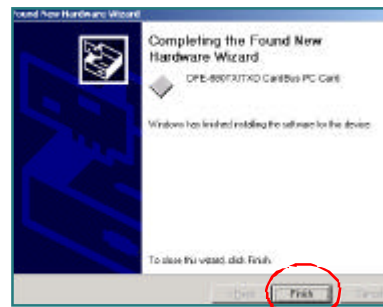
Click Yes to continue.

2 Running the Found New Hardware Wizard *continued*

The Hardware Wizard has completed the installation.

Click Finish.

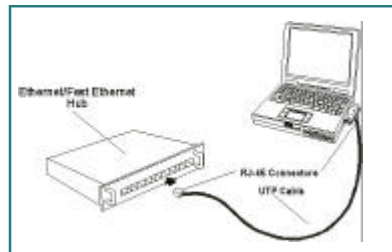
Please see **Appendix B** for information on verifying proper installation of your DFE-680TX/TXD.



3 Connecting to your network

After the Hardware Wizard has completed the installation of the DFE-680TX/TXD, you can now make your network connection.

Please insert one end of the RJ-45 plug into the opening in the DFE-680TX/TXD Ethernet PC Card, and then insert the other end of the RJ-45 cable into your networking hub or switch.



You are now networked!

Please see **Appendix A** for more information on types and lengths of cable that can be used to connect your network.

*Note: For more information on alternate networking possibilities, please see the **Networking Basics** and the **Getting Started** sections of the User's Manual.*

For instructions on configuration, please see your User's Manual.

APPENDIX

A

Connecting Your Network Cable

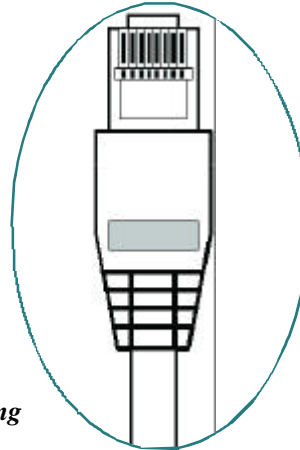
Category 5 UTP cable can be used for both **Fast Ethernet** cabling and for **traditional Ethernet** cabling.

Connecting for Fast Ethernet cabling

Cat5 cable is required for Fast Ethernet operation. The maximum cable length between the DFE-680TX/TXD and the supporting hub is 300 ft. The cable must be straight (not a crossover cable), with an RJ-45 plug at each end.

Connecting for traditional (10Mbps) Ethernet cabling

Category 3, Category 4, and Category 5 UTP cable, as well as EIA/TIA-568 100-ohm STP cable, all qualify under traditional Ethernet cabling rules. The maximum cable run between the DFE-680TX/TXD and the supporting hub is 300 ft. The cable must be straight (not a crossover cable) with an RJ-45 plug at each end.



APPENDIX

B

To check for the proper installation of your DFE-680TX/TXD, please click on **START > SETTINGS > CONTROL PANEL>**, double click on the **SYSTEM** icon. At the **SYSTEM PROPERTIES** window, click on the **DEVICE MANAGER** tab. Your **DFE-680TX/TXD** will appear under **NETWORK ADAPTERS**, as shown.

