

## Fixed Cameras

	Indoor							Outdoor			
Model	DCS-932L	DCS-933L	DCS-936L	DCS-960L	DCS-2132L	DCS-2230L	DCS-2530L	DCS-6045LKT	DCS-2330L	DCS-2670L	
Image Sensor	1/5" VGA progressive scan CMOS	1/5" VGA progressive scan CMOS	1/4" 1 megapixel progressive scan CMOS	1/2.7" 1 megapixel progressive scan CMOS	1/4" 1 megapixel progressive scan CMOS	1/2.7" 2 megapixel progressive scan CMOS	1/3" 2 megapixel progressive scan CMOS	1/4" 1 megapixel progressive scan CMOS	1/4" 1 megapixel progressive scan CMOS	1/2.7" 2 megapixel progressive scan CMOS	
Maximum Video Resolution (Ratio)	640 x 480	640 x 480	1280 x 720 (16:9)	1280 x 720 (16:9) 800 x 600 (other)	1280 x 720 (16:9) 1280 x 800 (other)	1920 x 1080 (16:9) 1280 x 800 (other)	1920 x 1080 (16:9) 1024 x 768 (other)	1280 x 720 (16:9) 640 x 480 (other)	1280 x 720 (16:9) 960 x 720 (other)	1920 x 1080 (16:9)	
Lens	Fixed 5.01 mm, F2.8	Fixed 3.15 mm, F2.8	Fixed 2.45 mm, F2.4	Fixed 1.72 mm, F2.0	Fixed 3.45 mm, F2.0	Fixed 4.37 mm, F2.0	Fixed 1.7 mm, F2.5	Fixed 3.3 mm, F2.0	Fixed 3.45 mm, F2.0	Fixed 1.5 mm, F2.0	
Minimum Illumination (Lux)	1 Lux (colour) 0 Lux (B&W, IR-LED on)	1 Lux (colour) 0 Lux (B&W, IR-LED on)	2.6 Lux (colour) 0 Lux (B&W, IR-LED on)	0.5 Lux (colour) 0.1 Lux (B&W) 0 Lux (B&W, IR-LED on)	1 Lux (colour) 0.5 Lux (B&W) 0 Lux (B&W, IR-LED on)	1 Lux (colour) 0 Lux (B&W, IR-LED on)	0.5 Lux (colour) 0.1 Lux (B&W) 0 Lux (B&W, IR-LED on)	1 Lux (colour) 0 Lux (B&W, IR-LED on)	1 Lux (colour) 0.5 Lux (B&W) 0 Lux (B&W, IR-LED on)	0.5 Lux (colour) 0.1 Lux (B&W) 0 Lux (B&W, IR-LED on)	
Infrared-Cut Removable Filter	●	●	●	●	●	●	●	●	●	●	
IR Built-in	5 m	5 m	5 m	5 m	5 m	5 m	5 m	6 m	5 m	10 m	
Wide Dynamic Range (WDR)											
LowLight+											
Angle Of View (H/V)	45.3° / 34.5°	45.3° / 34.5°	112° / 77°	180° / 120°	57.8° / 37.8°	103° / 55°	180° / 86°	68.88° / 37.85°	57.8° / 37.8°	180° / 86°	
PIR (Passive Infrared) sensor						●	●		●		
Privacy Masks					3 zones	3 zones	3 zones		3 zones		
2-Way Audio					●	●	●		●	●	
Built-in Microphone	●	●	●	●	●	●	●	●	●	●	
Built-in Speaker					●	●					
External Speaker Output											
Wireless	802.11b/g/n	802.11b/g/n	802.11b/g/n	802.11b/g/n/ac	802.11b/g/n	802.11b/g/n	802.11b/g/n		802.11b/g/n	802.11b/g/n	
Wi-Fi Signal Locator			●				●				
Built-in Wireless Extender (max. 5 clients)		●									
Ethernet Port	●	●			●	●			●	●	
PowerLine								● (DHP-308AV included)			
Digital Input/Output (DI/DO)					1/1	1/1					
Onboard Storage Card Slot			MicroSD SDHC (max. 32GB)	MicroSD SDHC (16GB included, max. 32GB)	MicroSD SDHC (max. 32GB)	MicroSD SDHC (max. 32GB)	MicroSD SDHC	MicroSD SDHC (max. 32GB)	MicroSD SDHC (16GB included, max. 32GB)	MicroSD SDXC (max. 128GB)	
Maximum Power Consumption	2.84 W	4 W	4 W	4.8 W	3.9 W	3.5 W	4.5 W	DCS-6045L: 8 W DHP-308AV: 3.01W	5 W	5 W	
Video Format	MJPEG	H.264 MJPEG	H.264 MJPEG	H.264 MJPEG	H.264 MJPEG	H.264 MJPEG	H.264 MJPEG	H.264 MJPEG	H.264 MJPEG	H.264 MJPEG	
Multi-Stream		●	●	●	●	●	●	●	●	●	
Mobile Stream	●	●	●	●	●	●	●	●	●	●	
ONVIF Compliant					●	●			●	●	
Digital Zoom	4x	4x	4x	8x	10x	10x	10x	4x	10x	10x	
Motion Detection	●	●	●	●	●	●	●	●	●	●	
Sound Detection	●	●	●	●	●	●	●	●	●	●	
E-Mail Notification	●	●	●	●	●	●	●	●	●	●	
with Snapshot	●	●	●	●	●	●	●	●	●	●	
with Video		●	●	●	●	●	●	●	●	●	
Event Recording to SD card			●	●	●	●	●	●	●	●	
Event Recording to NAS					●	●	●	●	●	●	
IPv6 Support			●		●	●	●	●	●	●	

Hardware Features

Software Features

	Fixed Cameras	Fixed Cameras						Pan & Tilt		
	Indoor Wired PoE	Outdoor Bullet			Outdoor Dome			Indoor	Indoor	Outdoor



	Model	DCS-3716	DCS-7110	DCS-7513	DCS-7517	DCS-6315	DCS-6511	DCS-6517	DCS-5000L	DCS-5030L	DCS-6915
	Hardware Features	Image Sensor	1/2.8" 3 megapixel WDR progressive scan CMOS (Sony Exmor)	1/2.7" 2 megapixel progressive scan CMOS	1/2.8" 2 megapixel WDR progressive scan CMOS	1/3.2" 5 megapixel WDR progressive scan CMOS	1/3" 1 megapixel WDR progressive scan CMOS	1/3" 1.3 megapixel progressive scan CMOS	1/3.2" 5 megapixel WDR progressive scan CMOS	1/5" VGA Progressive scan CMOS	1/4" 1 megapixel Progressive scan CMOS
Maximum Video Resolution (Ratio)		1920 x 1080 (16:9) 2048 x 1536 (other)	1920 x 1080 (16:9) 1280 x 800 (other)	1920 x 1080 (16:9) 1440 x 1080 (other)	1920 x 1080 (16:9) 2560 x 1920 (other)	1280 x 720 (16:9) 1024 x 768 (other)	1280 x 720 (16:9) 1280 x 1024 (other)	1920 x 1080 (16:9) 2560 x 1920 (other)	640 x 480	1280 x 720 (16:9) 640 x 480 (other)	1920 x 1080 (16:9) 1280 x 1024 (other)
Lens		DC Iris varifocal 3.1 ~ 8 mm F1.2 CS mount	Fixed 4 mm, F1.5	Motorised P-Iris varifocal 2.8 ~ 12 mm, F1.4	Motorised varifocal 2.8 ~ 12 mm, F1.8	Varifocal 2.8 ~ 12 mm, F1.4	Motorised varifocal 3.3 ~ 12 mm, F1.4 ~ 360	Varifocal 3 ~ 10.5 mm, F1.4	Fixed 2.2 mm, F2.4	Fixed 2.38 mm, F2.2	Motorised varifocal 4.7 ~ 94 mm, F1.6 ~ 3.5
Minimum Illumination (Lux)		0.5 Lux (colour) 0.05 Lux (B&W)	0.12 Lux (colour) 0 Lux (B&W, IR-LED on)	0.1 Lux (colour) 0 Lux (B&W, IR-LED on)	0.5 Lux (colour) 0 Lux (B&W, IR-LED on)	0.1 Lux (colour) 0 Lux (B&W, IR-LED on)	0.1 Lux (colour) 0 Lux (B&W, IR-LED on)	0.5 Lux (colour) 0 Lux (B&W, IR-LED on)	1 Lux (colour) 0 Lux (B&W, IR-LED on)	1 Lux (colour) 0 Lux (B&W, IR-LED on)	0.1 Lux (colour) 0.01 Lux (B&W)
Infrared-Cut Removable Filter		●	●	●	●	●	●	●	●	●	●
IR Built-in			15 m	30 m Smart IR	30 m	15 m	20 m	20 m	8 m	5 m	
Wide Dynamic Range (WDR)		●		●	●	●	●	●			●
LowLight+					●						
Angle Of View (H/V)		38.7°~95.9° / 29.1°~71°	77.4° / 45.1°	108°~33° / 57°~ 19°	72.84°~29.47° / 54.69°~21.72°	90°~28°/ 58.8°~16°	23.9°~89.8°/ 17.9°~63.6°	67.23°~26.94° / 48.88°~20.17°	57° / 42°	94.36° / 59.3°	4.07°~52.27° / 2.33°~33.4°
Optical Zoom		2.6x		4x	4.2x	4x	3.6x	3.5x			20x
Motorised Pan/Tilt									●	●	●
Pan Range									+170° to - 170°	+170° to - 170°	360° (endless)
Tilt Range									+95° to -25°	+90° to -20°	-10° to 190°
Presets									●	●	●
Auto Cruise											●
Privacy Masks		3 zones	5 zones	3 zones	5 zones	3 zones	3 zones	5 zones			16 zones
Analogue Output		BNC			BNC		BNC	BNC			
Vandal proof						IK10	IK10	IK10			IK10
2-Way Audio		●		● (with optional DCS-11)	●	●	●	●	●	●	●
Built-in Microphone								●	●		
External Microphone Input	●		● (with optional DCS-11)	●	●	●	●			●	
External Speaker Output	●		● (with optional DCS-11)	●	●	●	●			●	
Wireless LAN								802.11b/g/n	802.11b/g/n		
Ethernet Port	●	●	●	●	●	●	●	●	●	●	
PoE	● (802.3af)	● (802.3af)	● (802.3af)	● (802.3af)	● (802.3af)	● (802.3af)	● (802.3af)			● (802.3at)	
Digital Input/Output (DI/DO)	2/1	1/1	1/1 (with optional DCS-11)	1/1	1/1	1/1	1/1			4/2	
Onboard Storage Card Slot	SD SDHC (max. 32GB)		SD SDHC (max. 128 GB)	MicroSD SDHC (max. 32 GB)	MicroSD SDHC (max. 64 GB)	SD SDHC (max. 32 GB)	MicroSD SDHC (max. 32 GB)		MicroSD SDHC (max. 32 GB)	MicroSD SDHC (max. 32 GB)	
Maximum Power Consumption	4 W	6.3 W	10 W	12.48 W	12.24 W	9 W	11.6 W	4.8 W	5.56 W	65 W (with heater)	
Software Features	Video Format	H.264 MPEG-4 MJPEG	H.264 MPEG-4 MJPEG	H.264 MJPEG	H.264 MJPEG	H.264 MPEG-4 MJPEG	H.264 MPEG-4 MJPEG	H.264 MJPEG	H.264 MJPEG	H.264 MJPEG	MPEG-4 MJPEG
	Multi-Stream	●	●	●	●	●	●	●	●	●	●
	Mobile Stream	●	●	●	●	●	●	●	●	●	●
	ONVIF Compliant	●	●	●	●	●	●	●	●	●	●
	Digital Zoom	10x	4x	10x	10x	10x	10x	4x	4x	4x	10X
	Motion Detection	●	●	●	●	●	●	●	●	●	●
	Sound Detection			●						●	
	Tamper Detection		●	●				●			
	E-Mail Notification	●	●	●	●	●	●	●	●	●	●
	Event Recording to SD Card	●	●	●	●	●	●	●	●	●	●
Event Recording to NAS	●	●	●	●	●	●	●			●	
IPv6 Support	●	●	●	●	●	●	●				

# Vigilance Camera Range



The Vigilance Camera Range from D-Link offers professional, full featured high definition video surveillance solution that is easy to install and highly affordable. The range consist of cameras designed specifically to meet different surveillance and environmental requirements. From standalone surveillance solution that allows you to record videos without additional software or equipment, to weather/vandal-proof cameras for harsh environments.

Model	DCS-4602EV	DCS-4603	DCS-4622	DCS-4633EV	DCS-4701E	DCS-4703E	DCS-4802E
Model Name	Vigilance Full HD Outdoor PoE Vandal-Proof Dome Camera	Vigilance Full HD PoE Dome Camera	Vigilance Full HD Panoramic PoE Camera	3-Megapixel Outdoor PoE Vandal-Proof Dome Camera	Vigilance HD Outdoor PoE Mini Bullet Camera	Vigilance Full HD Outdoor PoE Mini Bullet Camera	Vigilance Full HD Outdoor PoE Mini Dome Camera
Indoor/Outdoor	Indoor and Outdoor IP-66	Indoor only	Indoor only	Indoor and Outdoor IP-66	Indoor and Outdoor IP-66	Indoor and Outdoor IP-66	Indoor and Outdoor IP-66
Vandal-Proof	● (IK-10)			● (IK-10)			
Image Sensor	1/3" 2 megapixel progressive scan CMOS	1/3" 3 megapixel progressive scan CMOS	1/3.2" 3 megapixel progressive scan CMOS	1/2.8" 3 megapixel progressive scan CMOS	1/3" 1 megapixel progressive scan CMOS	1/3" 3 megapixel progressive scan CMOS	1/3" 2 megapixel progressive scan CMOS
Maximum Video Resolution (Ratio)	1920 x 1080 (16:9) 1440 x 1080 (other)	1920 x 1080 (16:9) 2048 x 1536 (other)	1920 x 1536 (other)	1920 x 1080 (16:9) 2048 x 1536 (other)	1280 x 720 (16:9) 960 x 720 (other)	1920 x 1080 (16:9) 2048 x 1536 (other)	1920 x 1080 (16:9) 1440 x 1080 (other)
Maximum Frame Rate	Up to 30 fps	Up to 30 fps	Up to 25 fps	Up to 30 fps	Up to 30 fps	Up to 30 fps	Up to 30 fps
Lens	Fixed 2.8 mm, F1.8	Fixed 2.8 mm, F1.8	Fixed 1.1 mm, F20	Fixed 2.8 mm, F1.85	Fixed 2.8 mm, F1.8	Fixed 3.6 mm, F1.8	Fixed 2.8 mm, F1.8
Minimum Illumination (Lux)	1.0 lux (colour) 0.5 lux (B/W) 0 Lux (B&W, IR-LED on)	1.0 lux (colour) 0.5 lux (B/W) 0 Lux (B&W, IR-LED on)	0.5 lux (colour) 0.25 lux (B/W) 0 Lux (B&W, IR-LED on)	0.01 lux (colour) 0.008 lux (B/W) 0 Lux (B&W, IR-LED on)	0.2 lux (colour) 0.1 lux (B/W) 0 Lux (B&W, IR-LED on)	0.2 lux (colour) 0.1 lux (B/W) 0 Lux (B&W, IR-LED on)	1.0 lux (colour) 0.5 lux (B/W) 0 Lux (B&W, IR-LED on)
Infrared-Cut Removable Filter	●	●	●	●	●	●	●
IR Built-in	20 m	10 m	8 m	20 m Smart IR	30 m	20 m	30 m
Wide Dynamic Range (WDR)	●	●	●	●	●	●	●
3D Noise Reduction	●	●	●	●	●	●	●
LowLight+					●	●	●
Angle Of View (H/V/D)	96° / 54° / 108°	84° / 48° / 97°	180° / 180° / 180°	105° / 80° / 137°	96° / 54° / 108°	70° / 40° / 80°	96° / 54° / 108°
PIR Motion Sensor							
Gimbal	2-Axis Vertical: 60° / Horizontal 350°	3-Axis Vertical: 60° / Horizontal 340° / Rotational 340°		2-Axis Vertical: 60° / Horizontal 340°			3-Axis Vertical: 60° / Horizontal 355° / Rotational 355°
Privacy Masks	3 zones	3 zones		3 zones	3 zones	3 zones	3 zones
Audio Codec			G.711, AAC				
2-Way Audio			●				
Built-in Microphone			●				
Built-in Speaker			●				
Ethernet Port	●	●	●	●	●	●	●
802.3af PoE	●	●	●	●	●	●	●
Onboard Storage Card Slot			MicroSD SDXC (max. 128 GB)	MicroSD SDXC (max. 128 GB)			
Maximum Power Consumption	5.5 W	5.6 W	4.6 W	6 W	4.7 W	6.4 W	5.2 W
Video Format	H.264 MJPEG	H.264 MJPEG	H.264 MJPEG	H.265 H.264 MJPEG	H.264 MJPEG	H.264 MJPEG	H.264 MJPEG
Multi-Stream	●	●	●	●	●	●	●
ONVIF	●	●	●	●	●	●	●
Digital Zoom	10x	10x	10x	10x	10x	10x	10x
Motion Detection	●	●	●	●	●	●	●
E-Mail Notification	●	●	●	●	●	●	●
Event Recording to SD Card			●	●			
Event Recording to NAS	●	●	●	●	●	●	●
IPv6 Support	●	●	●	●	●	●	●
Compatible Mount Accessories	DCS-37-1, DCS-37-2, DCS-37-3	DCS-37-1, DCS-37-2, DCS-37-3		DCS-37-1, DCS-37-2, DCS-37-3			DCS-37-1, DCS-37-2, DCS-37-3

Hardware Features

Software Features



NVR				
	mydlink	mydlink	just connect+	just connect+
Model	DNR-312L	DNR-322L	DNR-2020-04P	DNR16-4802-2
Simultaneous Recording	9 channels	16 channels	16 channels	16 channels
Simultaneous Playback	9 channel	1 channel	16 channels	16 channels
Local Display	HDMI		VGA, HDMI	VGA, HDMI
Front Panel Controls				
PoE Switch Ports			4 x 802.3af PoE	4 x 802.3af PoE
Live View	•	•	•	•
UPS Support via USB	•	•	•	•
Remote Backup	•	•	•	•
RAID Support		•	•	•
E-Mail Notification	•	•	•	•
Smart Search			•	•
Manual/Continuous Recording	•	•	•	•
Scheduled/Triggered Event Recording	•	•	•	•
3rd party Camera Support	•	•	•	•
Bundled Cameras				DCS-4802E x 2
mydlink Support	•	•		

## DNR-2020-04P JustConnect 16-Channel PoE Network Video Recorder

The DNR-2020-04P JustConnect 16-Channel PoE Network Video Recorder is an all-in-one network video recorder (NVR) that can record video from up to 16 network cameras<sup>1</sup> to its dual HDD storage.

With the integrated HDMI/VGA display output and USB port, users can view, control and configure the DNR-2020-04P without the need to turn on their PC.

Featuring Power over Ethernet (PoE), the NVR supplies power to up to four PoE cameras, saving valuable time and electrical installation costs during setup.

Powered by an embedded system, the DNR-2020-04P supports real-time remote monitoring and playback via a web browser using the NVR's web GUI.

Additionally, support for audio in/out, DI/DO triggering, and external USB 3.0 storage for video export and backups fill the needs of small businesses.

The bundled Multi-NVR Viewer is a comprehensive network surveillance software designed for SMB and enterprise users, making the DNR-2020-04P a convenient, versatile, and effective video recorder.

### Concurrent Recording and Viewing

Record and view real-time video streams from up to 16 cameras on a local network or remotely over the Internet

### Easy Setup and Configuration

Embedded software enables easy setup via a connected monitor and four PoE ports eliminate the need for electrical wiring when adding cameras

### No Computer Needed

Standalone solution with 2 integrated hard disk bays, USB mouse/keyboard support and HDMI/VGA monitor support





## D-ViewCam DCS-100

Bundled free with D-Link network cameras D-ViewCam enables users to centrally manage multiple cameras for home or businesses.

Supporting up to 32 network cameras and up to 64 users, D-ViewCam is compatible with all current D-Link network cameras and video servers, offers digital monitoring and recording with a wide array of features including simultaneous video recording, playback and live view.

D-ViewCam offers scheduled, motion and manual recording. Recorded files can be searched by video type and selected files can be played, edited and converted into AVI or ASF files. The e-map mode allows users to arrange a map with camera locations and orientation, while additional features such as auto-patrol, rotate, zoom, and focus provide optimal control over video surveillance.



Playback view



Live view

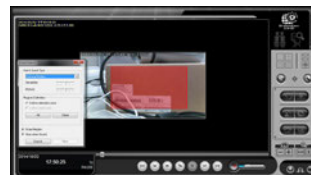
## D-ViewCam Plus DCS-250

The DCS-250 D-ViewCam Plus is a comprehensive network camera surveillance software designed for medium-to-large business as well as enterprise users. It centrally manages up to 64 network cameras and is compatible with current D-Link network cameras, video servers and an extensive range of third party network cameras. This software offers digital monitoring and recording of video, audio, and events for use in various security applications. Furthermore, this easy-to-use surveillance software provides users with a wide array of features, including multiple-channel playback, high resolution monitoring and live view.

Powerful optional Intelligent Video Surveillance (IVS) packages are available for the D-ViewCam Plus, including Presence/Tripwire and Counting IVS packages. The Presence/Tripwire Package (DCS-250-PRE-001-LIC) allows users to set up to 40 zones or lines which detects when an object is inside or is crossing a zone or a line, as well as camera-shake elimination; whilst the Counting Package (DCS-250-COU-001-LIC), allows objects such as people or vehicles to be counted. Both packages provide tamper detection to give users an extra piece of mind.



Multi-channel live view



Video search

➤ D-Link has its own Video Management Software (VMS), known as D-ViewCam, which is designed to run on industry standard Windows platforms.

### D-ViewCam Plus IVS Presence License

This license enables video analytics functions to detect when an object is inside or is crossing a zone or a line.

#### Effective video analytics

- Low cost and affordable
- 40 detection zones or lines

#### Precise detection algorithm

- Up to 95% accuracy
- No false alarms from falling leaves, rain, snow or camera noise

#### Save recording space

- Recording function triggers only on event, with high precision detection algorithm which translates to significant savings in storage space

#### Stabiliser

- In environments where camera stability is an issue, this feature compensates for any movement to provide a clear view

#### Tamper Detection

- Detects any event that significantly changes the field of view of the camera, such as loss of focus if the camera has been covered up.

### D-ViewCam Plus IVS Counting License

This license enables video analytics functions such as people and vehicle counting, camera stability and tamper detection for the D-ViewCam Plus for one camera. The engine can track, classify, and analyse the behaviour of individual or a group of objects over long distances to greatly improve parameter security and monitoring efficiency.

- Instant alarm notifications
- Intelligent event search with video
- Intuitive 3D grid calibration
- 40 detection zones and tracks up to 100 targets per camera
- Self-learning algorithm automatically adapts to environment changes

#### People Counting

- Includes a bi-directional line-crossing filter, suitable for counting people in busy doorways and entrances

#### Vehicle Counting

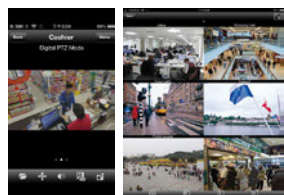
- Captures statistics on vehicle flow
- Provides an estimated speed of the vehicle

#### Tamper Detection:

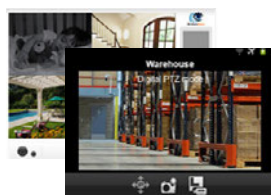
Detects any event that significantly changes the field of view of the camera, such as focus loss of camera being covered up.

## D-ViewCam Mobile

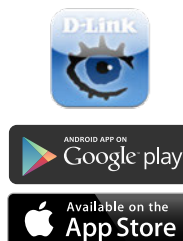
Keep an eye on your surveillance cameras anytime, anywhere with D-Link's D-ViewCam Mobile app. The D-ViewCam Mobile app makes it easy to check on your home or business no matter where you are, no matter what time of day it is.



For iPhones/iPads



For Android devices





# Gigabit Smart Managed Surveillance Switches

## DGS-1100/1210 Series

The DGS-1100/1210 Series Gigabit Smart Managed Switches are the world's first PoE switches with ONVIF support specifically designed for Video IP Surveillance applications.

This allows it to recognise ONVIF devices and integrate seamlessly with your surveillance network. With the surveillance optimised web interface, you can access real-time information on your surveillance network such as surveillance topology and device status, as well as PoE power and network bandwidth utilisation. Auto Surveillance VLAN (ASV) function ensures the quality of real-time video for monitoring and control without compromising the transmission of conventional network data.

The DGS-1100/1210 Series switches include support for IEEE 802.3af/at and higher power budgets, allowing more PoE devices to be powered by the switch and for devices to be installed in remote locations without immediate access to power outlets. It offer high PoE power budget, up to 370W, suitable for powering multiple network cameras.

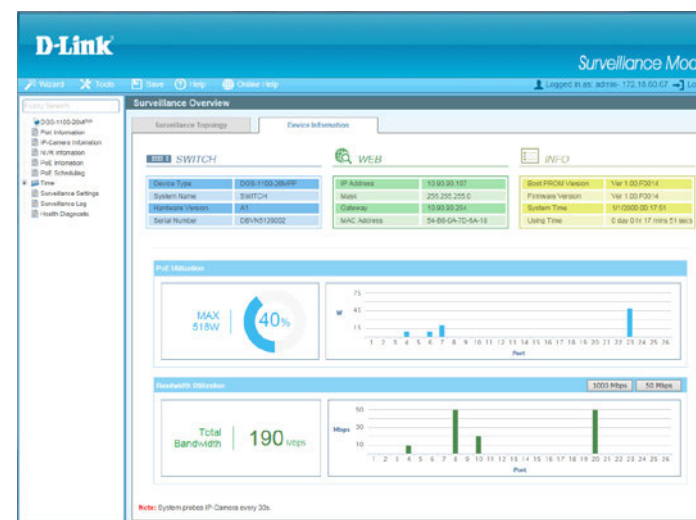


➤ World's first PoE switch with ONVIF support, specifically designed for Video IP Surveillance applications and equipped high PoE power budget suitable for powering multiple network cameras



### Visual Surveillance Topology

Quickly see which devices are connected to which ports. ONVIF support allows the switch to recognise both D-Link and 3rd party IP cameras and Network Video Recorders (NVRs).



### Device Information

Detail overview of the device as well as real-time PoE power and network bandwidth utilisation.

# Jargon Buster

➤ Not sure what all the terms mean? Here's a short guide to help understand the D-Link products and services discussed in this guide.

## High Definition (HD) video

HD cameras capture a lot more detail and are also able to cover a much wider area than a standard VGA camera, giving good surveillance coverage with fewer cameras.

## Megapixel

A generic term for cameras able to record at high resolution, i.e. above a million pixels. Analogue cameras are limited to around 0.4 Megapixels whereas digital IP cameras can capture images in much higher detail with 2 Megapixels and above.

## Built-in IR

Infrared (IR) illuminators emit invisible light, enabling you to monitor an area in complete darkness.

## Infrared Cut Filter

A filter that can block infrared while still passing visible light. Usually removable (either manually or under software control) to enhance daytime images while also allowing the camera to be used at night.

## Wide Dynamic Range (WDR)

The ability of a camera to capture images in a wide range of lighting conditions. Extremely useful where glare, reflection and high levels of contrast would otherwise result in a poor picture, such as in doorways and next to windows.

## LowLight+

LowLight+ technology captures light even in low lux, allowing the camera to record colour images even in low light conditions.

## P-iris

P-Iris is a precise iris control, that optimises the iris opening of the lens under all lighting conditions resulting in images with better contrast, clarity, resolution and depth of field. It provides improved image sharpness and increased image usability.

## Video Streaming

Encoding of captured video for transmission over a data network. A number of encoding and compression technologies can be applied here, the most popular being Motion JPEG, MPEG-4 and H.264. Of most interest at present is H.264 which can optimise bandwidth and storage by up to 80% without compromising on image quality.

## Onboard SD Recording

The ability to record to media in the camera itself, such as flash memory or removable SD card. Particularly useful for remote sites with no network, Wi-Fi or 3G connectivity and as a backup in case of a network failure.

## Pan, Tilt, Zoom (PTZ)

The ability to remotely control a camera to pan (move from side to side), tilt (move up and down) and zoom in on a particular area of interest.

## Passive Infrared (PIR)

PIR sensors measure infrared (IR) radiation from objects in its field of view. Used to detect movement.

## Power over Ethernet (PoE)

The ability to transmit power to a remote IP camera over the data network. This eliminates the need for an independent main power supply and an AC adapter that might fail or be unplugged. With PoE a central Uninterruptible Power Supply (UPS) will also keep the cameras working in the event of a power cut.

## Digital input/output (DI/DO)

Standard interfaces that enable a camera to communicate with external sensors (e.g. door and window sensors) and alarm systems.

## Network Video Recorder (NVR)

An appliance or application designed to manage and record video streams from IP Surveillance cameras. These will, typically, record to hard disk with optional copying to other media such as recordable DVD and the cloud.

## Open Network Video Interface Forum (ONVIF)



An open industry forum, of which D-Link is a member, for the development of a global standard for interfacing IP-based physical security products.

## JustConnect™

JustConnect™ (DNR-2060-08P) is a new standalone multifunctional network video recorder (NVR), designed to power a complete, end-to-end surveillance solution for small businesses. Supporting up to eight IP Surveillance cameras, it can be set up without the need for a PC and brings comprehensive surveillance capabilities to users of any level of technical knowledge. When connected to the Internet, the DNR-2060-08P supports remote monitoring in real time on a smart phone or tablet with the free JustConnect+ mobile app, so business owners can keep an eye on things from anywhere at any time.

## mydlink™



mydlink is a unique cloud service that allows you to easily set up remote access and alerts from D-Link cloud products, on your smartphone and computer without complicated set up, from anywhere in the world.

mydlink-enabled network cameras offers a simple and easy solution to access your camera from anywhere around the world via the Internet. You can remotely monitor your home or business using a standard web browser or through the free and paid mobile apps available on Apple App Store or Google Play. You can even talk back through the app with 2-way audio support as well as playback recorded video clips from the onboard storage\*. E-mail alerts notifies you whenever motion or sound\* is detected.

