

Setting up DP-100/300 in Novell NDS environment

The procedures below illustrate how the DP-100/300 can be set up using Clinet32 for Windows95/98 in NetWare 5.x server.

Requirements

1. You need a Win95/98 machine which has installed **Novell Client32 V3.x for Windows95/98** on the network with **SPX/IPX protocol**
2. The PS Admin program will also run on this machine.
3. You must have **supervisor** (i.e. **administrator**) rights on the NetWare 5.x server.

Note. You can find Novell Client V3.x for Windows95/98 from Novell website. It is free.

STEPS

You will setup the print queue first. Then, you will add all the printers serviced by that print queue. And lastly, you will let the print server know about the printers too.

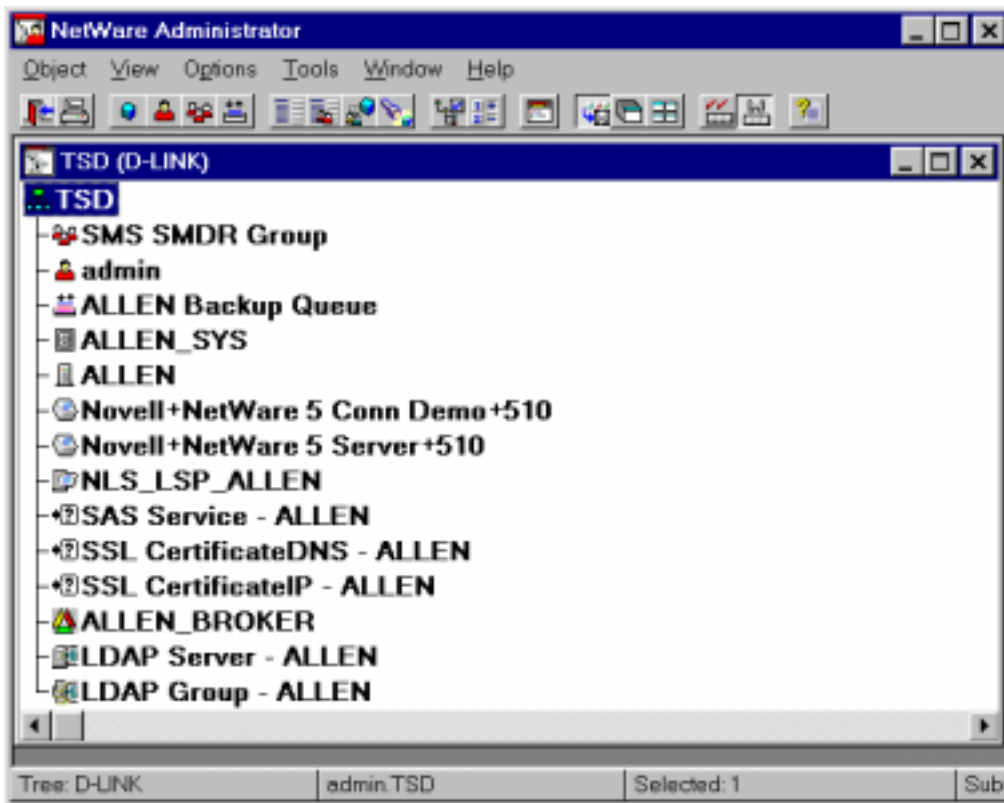
- 1) Run PS Admin in Windows to make sure that the (new) print server DP-100/300 on your network can be detected (that is, it can be seen in the program).

Note down the **print server name** and **port name**(the same as printer name), you will use this name later. You may change your print server name by going to **Configuration**→

Server Device...>port settings...

For example, printer server name: DP300 and the port name: DP300-P1 is used throughout this document.

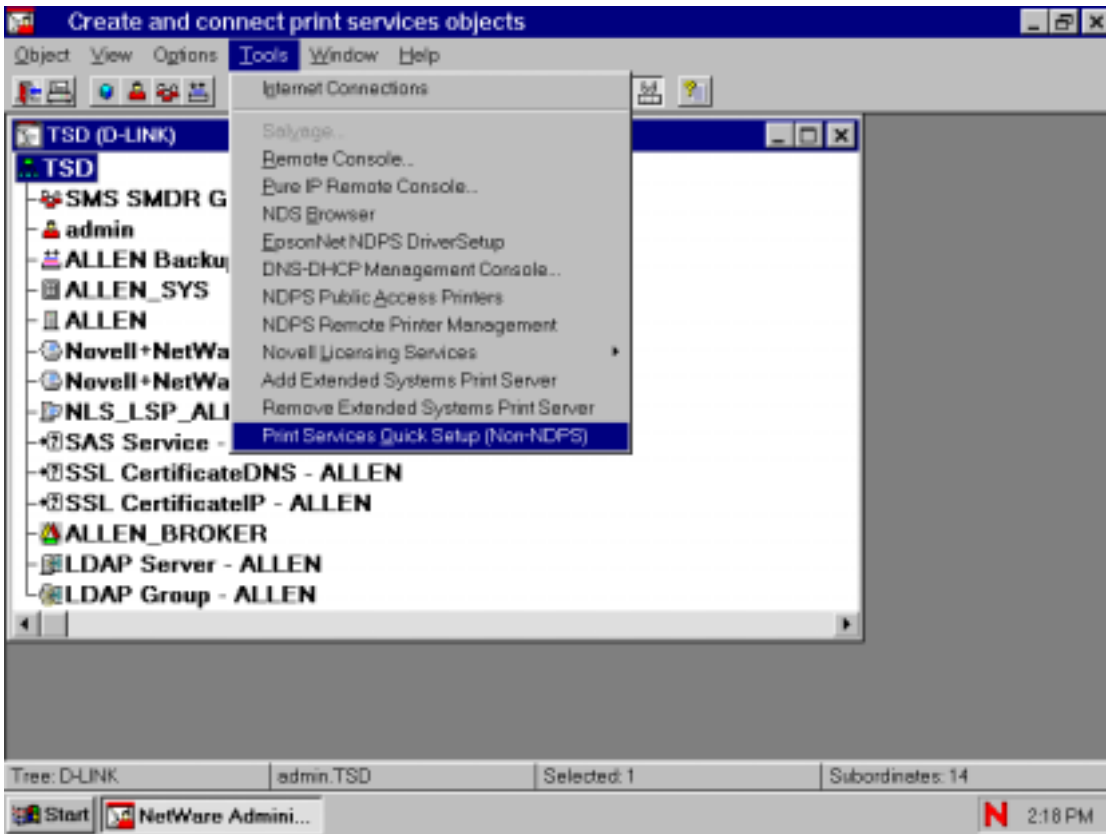
- 2) Run NWADMIN32 in the "F:\PUBLIC\WIN32 directory".
You must login into the Netware server (NDS) with the **administrator** rights.
- 3) You will see a main menu of Available Options.



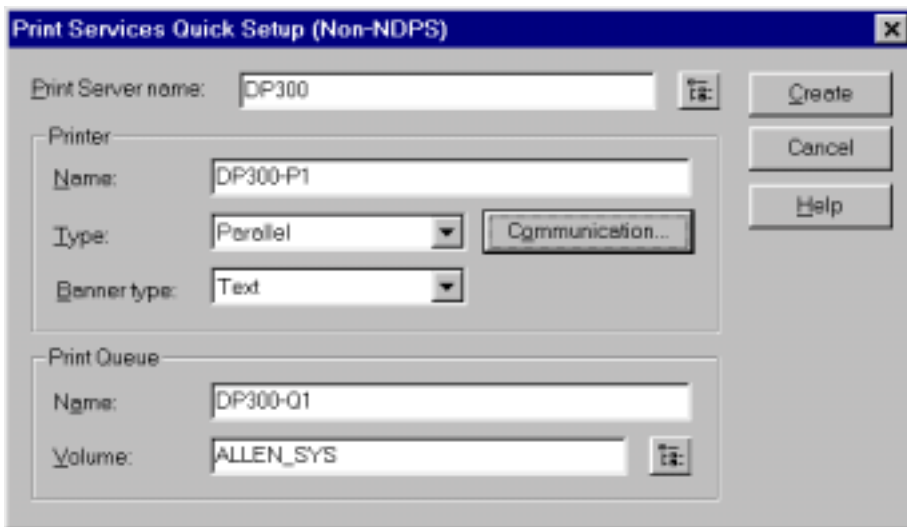
4) Select an available Organizational or Organizational Unit.
I select the Organization- TSD.

5) Create the Printer Server and Print Queue

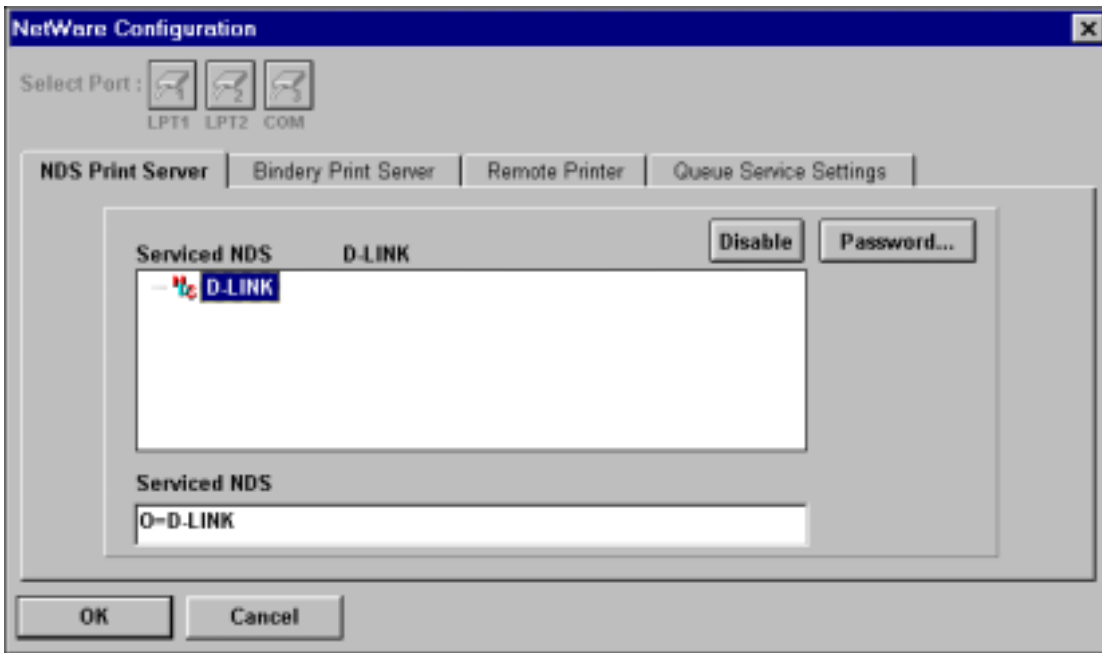
You firstly click the available Organizational — TSD, then click "Tools" → "Print Services Quick Setup."



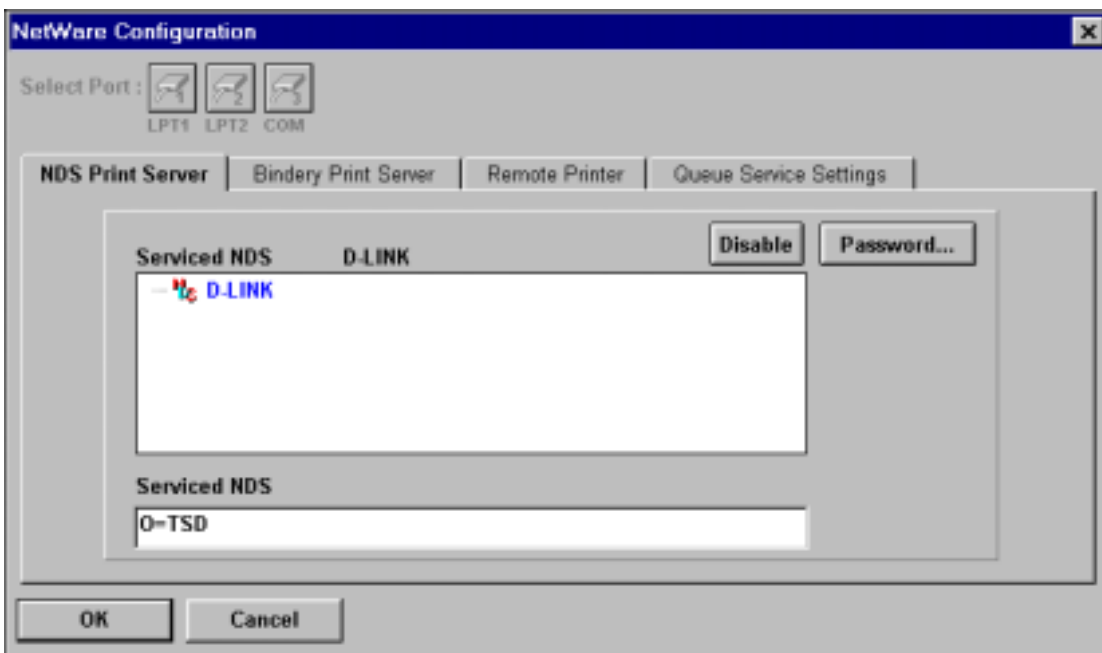
7) Please fill in the correct Print Server name, Printer Name and Queue Name. And select an available volume,



- 6) Press "Create".
- 7) Run PS Admin.
- 8) Highlight the print server and go to **Configuration>NetWare Protocol...**
- 9) Select the **NDS Print Server** tab and the *item* in the **Serviced NDS tree** by clicking on it. For example, D-LINK.



10) Specifying the context where you created the print server in the **Serviced NDS Context** if it is different from default. For example, O=TSD.



- 11) Press **OK**, then save the setting by going to **Configuration>Save Configuration**
- 12) The print server will reset itself and begin log-in NetWare 5.x server.
- 13) You must capture the print queue (on each workstation) before you do printing (from the workstation). See the Novell document on how to capture the print queue.