

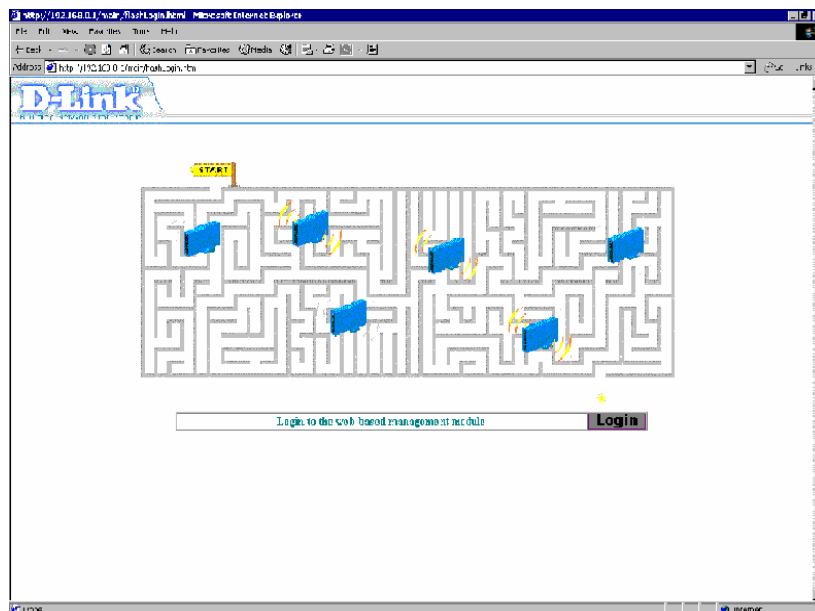
D-Link Quick Installation Guide

DSL-504/DSL-500/DSL-604+ Quick Install Guide Firmware R221
(Setup for ADSL Connection)

Open your web browser and type <http://192.168.0.1> in the address box

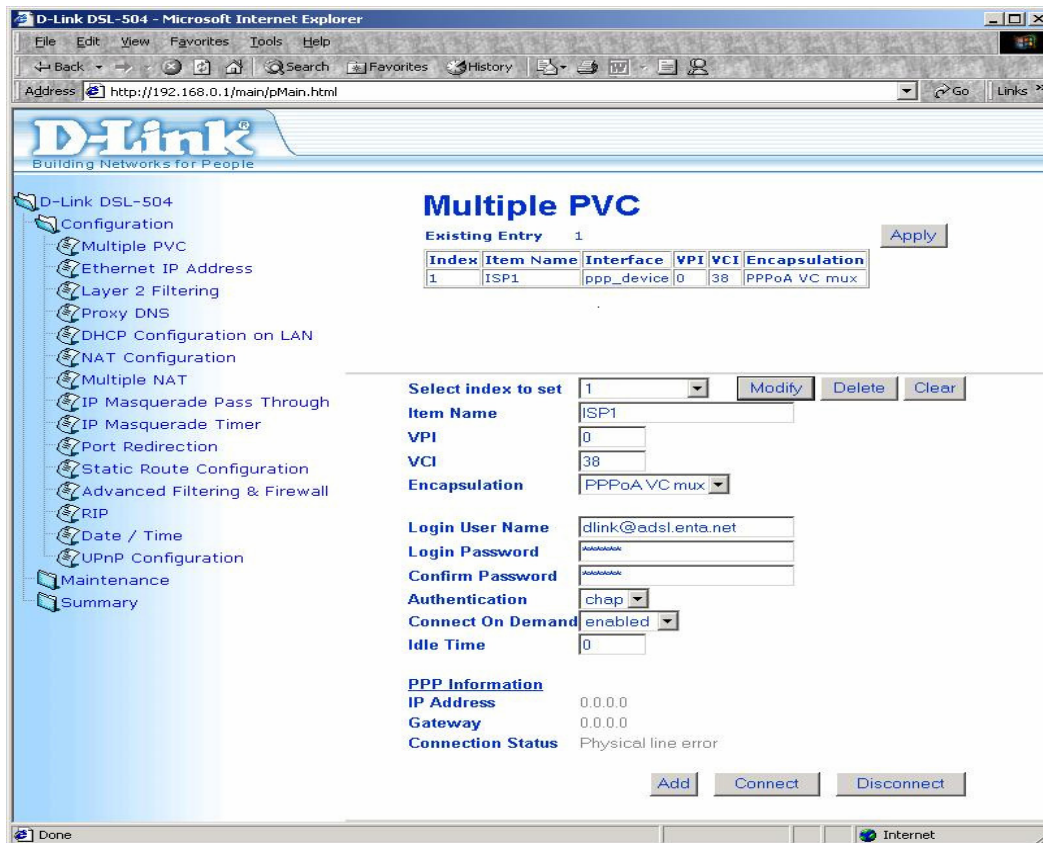


Click on Login

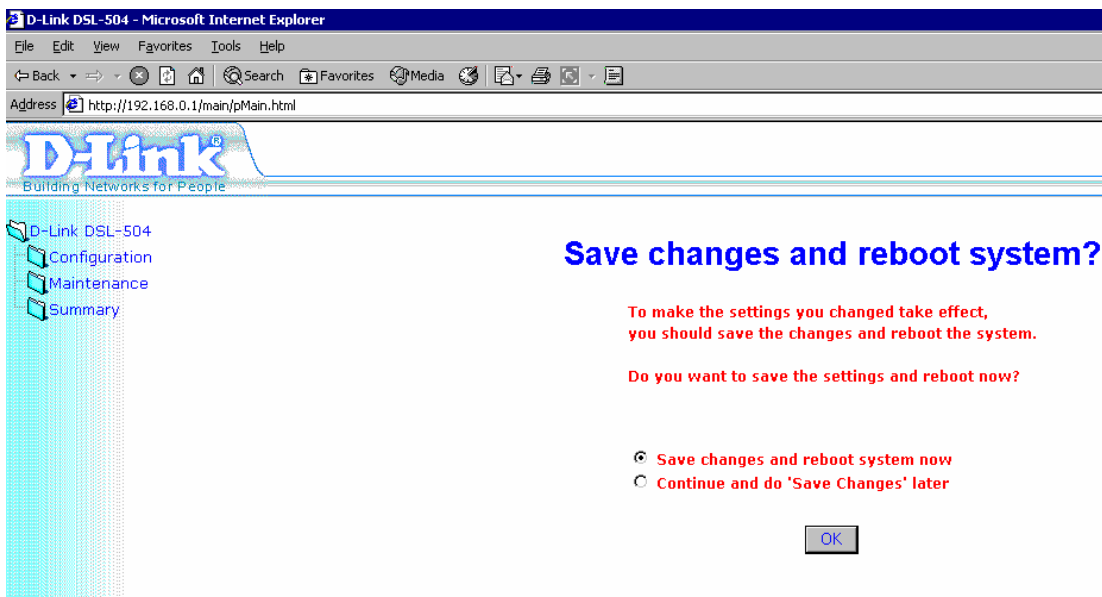


Type **admin** in the username field and type **admin** in the password field, then click **OK**

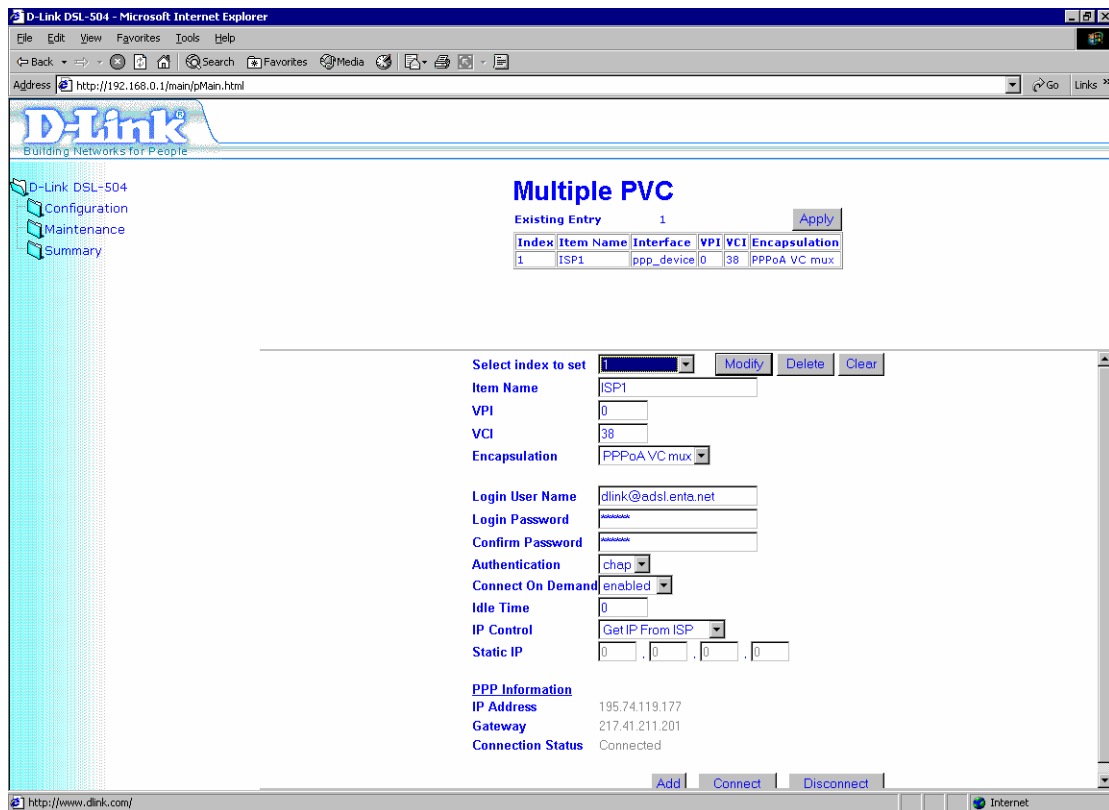
Enter your ISP login details in the Multiple PVC page



Click the Modify button then click the apply button. Select **save changes and reboot system now**, click the **OK** button and wait for system to reboot



After the system has rebooted login to the web configuration again. In the PPP information an IP address and default gateway appear, the connection status should say connected.



Your router is configured.