

D-Link Quick Installation Guide

This product works with the following operating system software: **Windows XP, Windows 2000, Windows Me, Windows 98SE, Macintosh OS X (10.2.x or later)**



DWL-122
2.4GHz USB
Wireless Adapter

Before You Begin

You must have at least the following for PC Windows Based Computers:

- You will need a computer with an available USB port to connect the DWL-122 Wireless USB adapter.
- At least a 300 MHz processor and 32 MB of memory
- An 802.11b Access Point (for Infrastructure Mode) or another 802.11b wireless adapter (for Ad-Hoc; Peer-to-Peer networking mode.)
- Properly installed and working USB Controller.

You must have at least the following for Macintosh OS X Based Computers:

- A Power Mac G3 or G4, iMac, iBook, or PowerBook (post PowerBook G3) with at least 128MB RAM.
- An 802.11b Access Point (i.e., D-Link Wireless Router, access point or Airport Base Station for Infrastructure Mode) or another 802.11b wireless adapter (for Ad-Hoc; Peer-to-Peer networking mode).
- Properly installed and working USB Controller.

Check Your Package Contents

These are the items included with your DWL-122 purchase:



DWL-122 Wireless USB Adapter



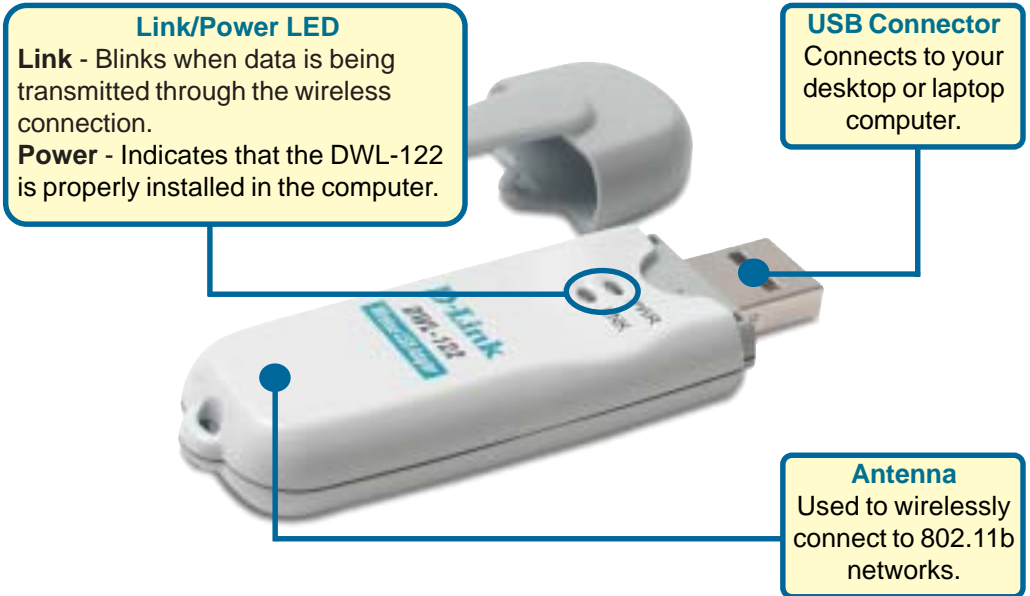
CD-ROM (containing Drivers, Manual and Warranty)



USB Extension Cable

If any of the above items are missing, please contact your reseller.

Product Overview



1

Windows OS Installation

Insert the D-Link CD-ROM Into Your Computer

Turn on the computer and **Insert** the **D-Link Air DWL-122 Driver CD** in the CD-ROM drive.

The step-by-step instructions that follow are shown in **Windows XP**. The steps and screens are similar for the other Windows operating systems.

! Do **NOT** install the DWL-122 USB Adapter into your computer before installing the driver software on the D-Link CD!

For Macintosh OS X Installation please refer to Section 1 for Macintosh.

The Install Screen will appear.

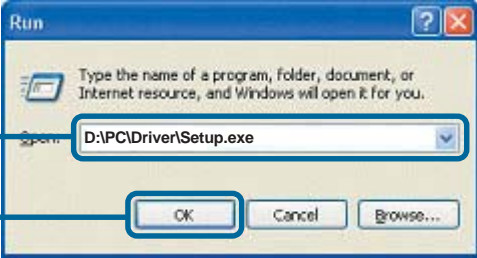
Click Install Driver/PC Utility




If the CD Autorun function does not automatically Go to **Start** > **Run** on your computer, then type “D:\PC\Driver\Setup.exe.” If it does start, proceed to the next screen.

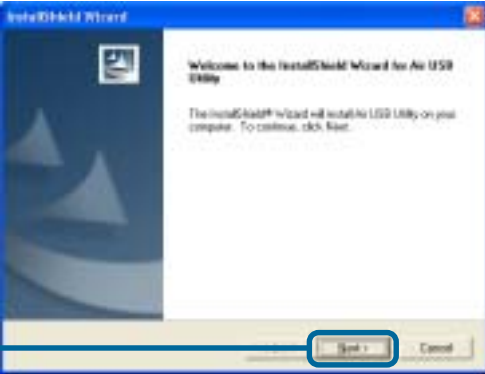
Type “D:\PC\Driver\Setup.exe.”

Click **OK**

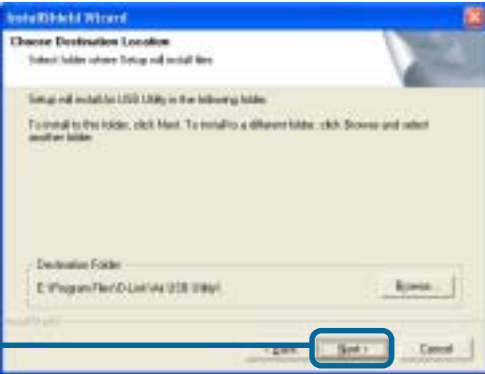


 The letter “D” represents the letter of the CD-ROM drive. Your CD-ROM drive may be a different drive letter.

Click **Next**

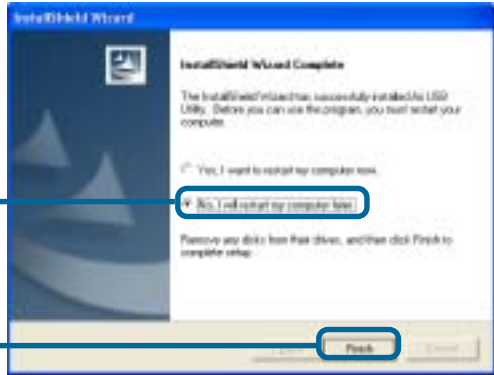


Click **Next**



Click **No, I will restart my computer later**

Click **Finish**



Shut down Your Computer

2 Installing the DWL-122 Wireless USB Adapter to Your Computer

Removing the protective covering for the DWL-122.

Begin by **pressing down** on the cover with your thumb.



Then **pull** the cover away from the DWL-122.

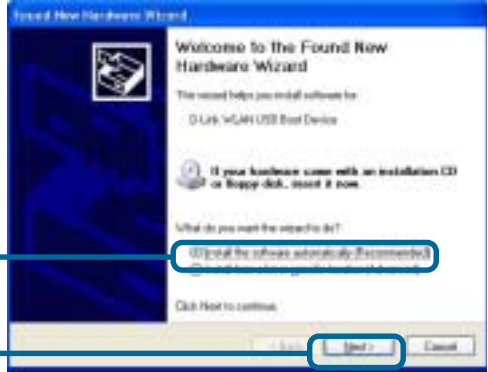


A. Insert one end of the USB Adapter into the provided USB cable and plug the other end into your computer's USB Port.

3

Turn on Your Computer

When you restart your computer this **Found New Hardware Wizard (Windows XP)** screen will appear:



Select **Install the software automatically (Recommended)**

Click **Next**

Windows XP will automatically load the driver files.

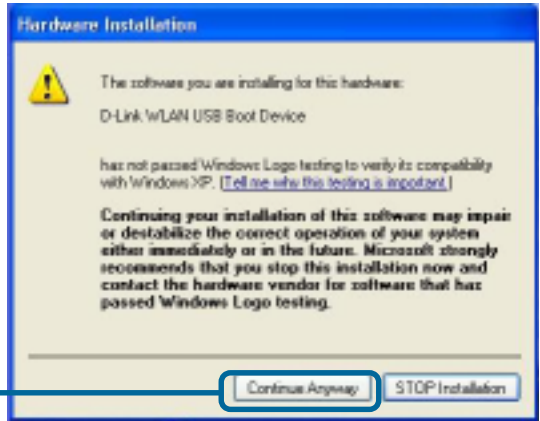


Click **Finish**



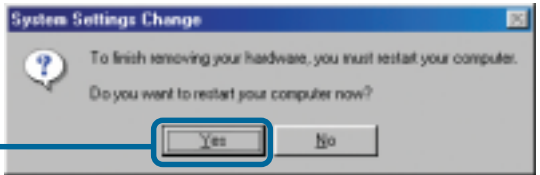


For Windows XP/2000, a screen similar to this **Digital Signature Not Found** screen may appear during the installation.



Click **Yes** to continue the installation

For Windows Me and 98SE, this screen may appear.



Click **Yes** to finalize the installation

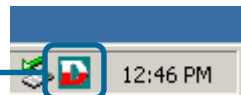


Your Installation is Complete!

After you've continued in Windows XP (or after the computer restarts in the other Windows operating systems), the D-Link **Air DWL-122 Configuration Utility** will automatically start and the utility icon will appear in the bottom right hand corner of the desktop screen (systray). **If this icon appears GREEN, then you have successfully installed the DWL-122, are connected to a wireless network and are ready to communicate!**

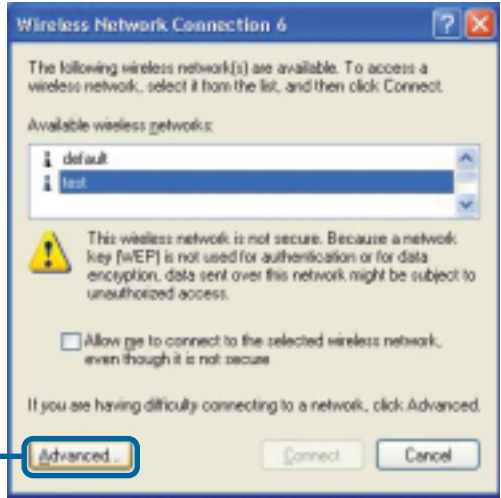
For Windows XP, if you wish to use the **Air USB Utility**, please perform the following steps.

Double-click the **utility icon** to use the configuration utility.

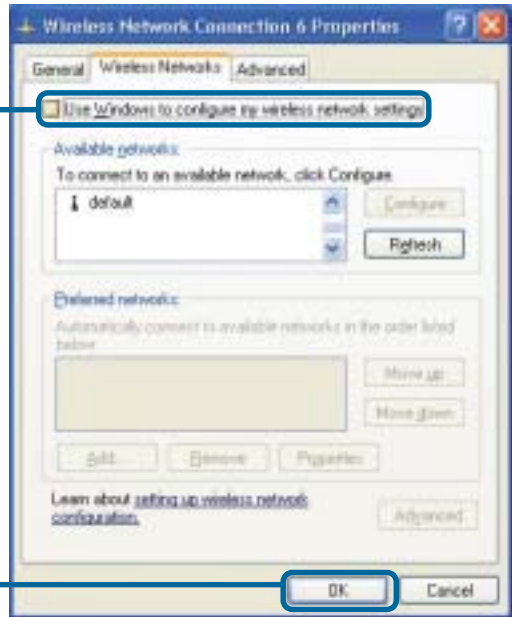


4

Your Installation is Complete! (Cont.)



Click **Advanced**



Uncheck **“Use Windows to configure my wireless network settings.”**

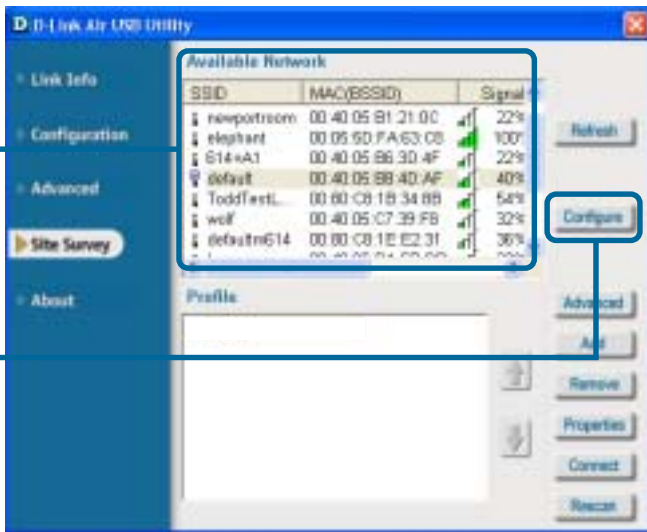
Click **OK**

5

Connecting to a Wireless Network

This window displays the available wireless networks.

Click **Configure** after highlighting a wireless network you want to connect to.



By initial factory settings, WEP encryption is turned off. If your access point or wireless router is configured with WEP encryption, please make sure to enter the correct WEP key.

Click **OK**



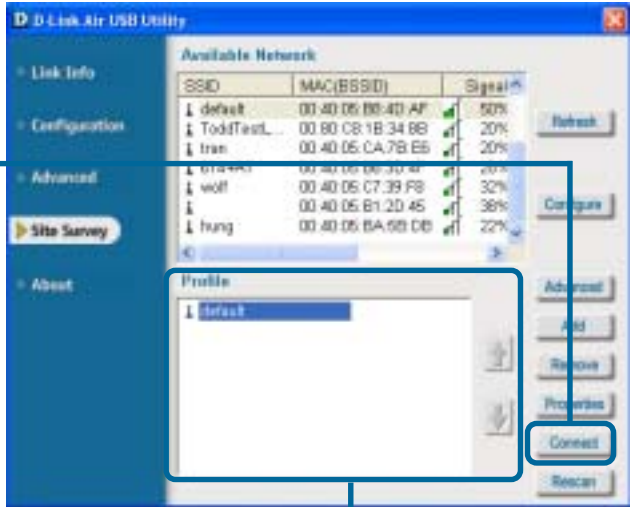
5

Connecting to a Wireless Network (cont.)

Click **Connect**

Finished! You should now be connected to your wireless network! Now you are ready to participate in your new wireless environment!

The configured access point or wireless router will be displayed in the bottom window. If you have more than one profile, select the profile you wish to connect to.



1

Macintosh OS X Driver Installation

Turn on your **Macintosh** and **Insert** the **D- Link Air DWL-122 Driver CD** in the CD-ROM drive.

The step-by-step instructions that follow are shown in **Macintosh OS X (10.2.x)**. An Icon like the one shown should appear on your desktop.

Double Click



To start the installation, **double click the "MAC" Folder**, then **double click "DLinkUsbDriver.dmg"**. That will extract the installation package, "**DLinkUsbDriver.pkg.**" **Double Click** to begin.

Double Click



Your system may require you to enter a **username** and **password** to be able to install software.



The initial install screen will appear and you must click **Continue** to begin the installation process.



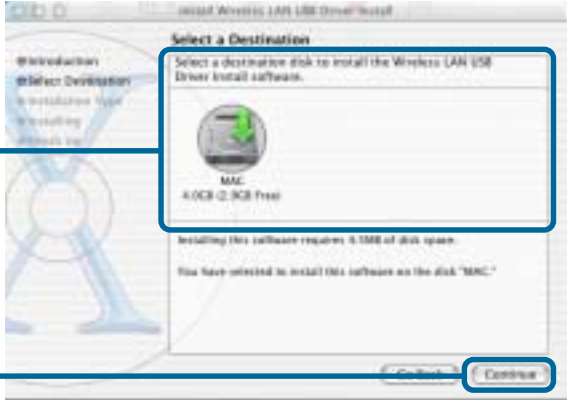
Click Continue

Continue

1

Macintosh OS X Driver Installation (cont.)

You will be prompted for a **destination** for the installation files. Select the location by double-clicking the appropriate **hard disk drive**.



Click **Continue**

Click **Continue Installation**



Click **Restart**



See **Step 2** (Windows Installation) to see how your adapter connects to your Macintosh.

Finished! Your Computer Will Now Restart

Appendix A

Using the Configuration Utility For Macintosh OS X (10.2.x)

Load **System Preferences** and you will see an icon located near the bottom called Wireless Adaptor

Single Click

Other



A. Network Name: The Service Set Identifier is the name assigned to the wireless network. The factory SSID setting is set to **default**.

D. Signal Strength: The Signal Strength represents the wireless signal between the access point and the DWL-122.

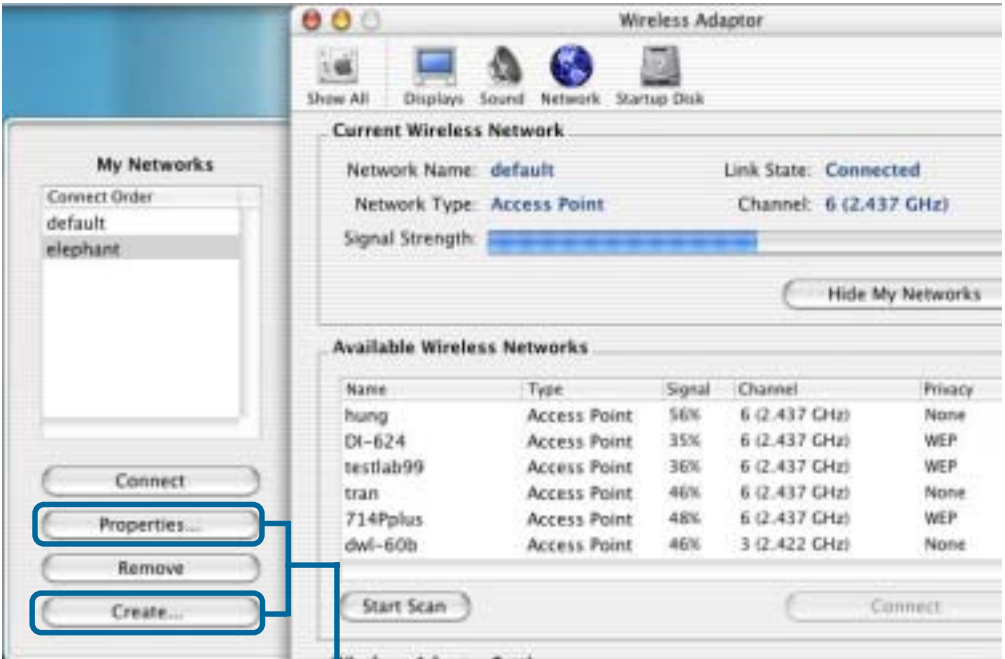
B. Network Type: Displays the type of network you are connected to. The factory setting is set to Access point. Ad-Hoc mode is used for peer-to-peer networking.

E. Available Wireless Networks: Wireless Networks within range of the DWL-122. Also displays the type of network, signal strength, channel, and if encryption is enabled.

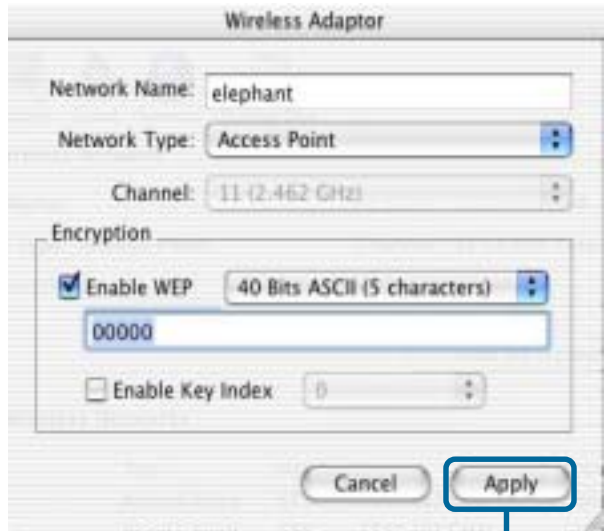
C. Channel: Displays the channel information. By default, the channel is set to 6. Please note that the DWL-122 will automatically adjust channel depending on the Access Point.

F. My Networks: For setting up multiple network profiles. Convenient for users travelling between wireless networks in different areas.

Appendix A (cont.)



By clicking **Properties** and **Create** this screen will appear. Here you can modify your **WEP Settings** and set the **Key Index** and also setup new profiles.



Click **Apply** to finalize the settings.

Appendix B

Using the Configuration Utility For Windows Operating Systems

A. Status: Displays the MAC Address of the Access Point that is associated with the DWL-122.

B. SSID: The Service Set Identifier is the name assigned to the wireless network. The factory SSID setting is set to **default**.

C. Frequency: Displays the current frequency used by the adapter.

D. Wireless Mode: The factory setting is set to Infrastructure. Ad-Hoc mode is used for peer-to-peer networking.

D. D-Link Air USB Utility

Link Info

- A** Status: Associated BSSID=00:40:05:B8:4D:AF
- B** SSID: default
- C** Frequency: 802.11b
- D** Wireless Mode: Infrastructure
- E** Encryption: Disabled
- F** Tx Rate: 11.0 Mbps
- G** Channel: 6

H Signal Strength: 54%

I Packet Count

Transmit	Receive
>100	
50	
0	

E. Encryption: Displays the current encryption status of the wireless connection.

F. TxRate: The default setting is **Auto**; meaning, TxRate settings are automatically determined by the DWL-122 depending on the distance from the access point.

G. Channel: Displays the channel information. By default, the channel is set to 6. Please note that the DWL-122 will automatically adjust channel depending on the Access Point.

I. Packet Count: Graphically displays the statistics of data transmitted and received.

H. Signal Strength: The Signal Strength represents the wireless signal between the access point and the DWL-122. The percentage coincides with the graphical bar.

Appendix B (cont.)

J. SSID: The Service Set Identifier is the name assigned to the wireless network. The factory SSID setting is set to **default**. Make changes here to match the SSID on existing Wireless Router or Access Point.

K. Wireless Mode: The factory setting is set to **Infrastructure**. Ad-Hoc mode is used for peer-to-peer networking.

L. Data Encryption: The default setting is set to **Disabled**. The adapter supports WEP when encryption is enabled.



M. Authentication: You can specify the authentication mode for the wireless network. The default setting is set to **Open Authentication**.

N. Key Length: When encryption is enabled, you will have the option to specify the level and key format of the encryption used. Select the appropriate Key Index : 1-4 and enter ACSII or hexadecimal digits in the appropriate field.

Technical Support

You can find software updates and user documentation on the D-Link website.

D-Link provides free technical support for customers within the U.K.

U.K. customers can contact D-Link technical support through our website, or by phone.

Tech Support for customers within the U.K:

D-Link Technical Support over the Telephone:

(0800 917 5063)

Mon-Fri, 8.00am to 8.00pm GMT

D-Link Technical Support over the Internet:

<http://www.dlink.co.uk>

<ftp://ftp.dlink.co.uk>

Tech Support for customers outside of U.K:

D-Link Technical Support over the Telephone:

Call your local D-Link Support Centre

Details found at <http://www.dlink.co.uk/1407.htm>

D-Link®
Building Networks for People