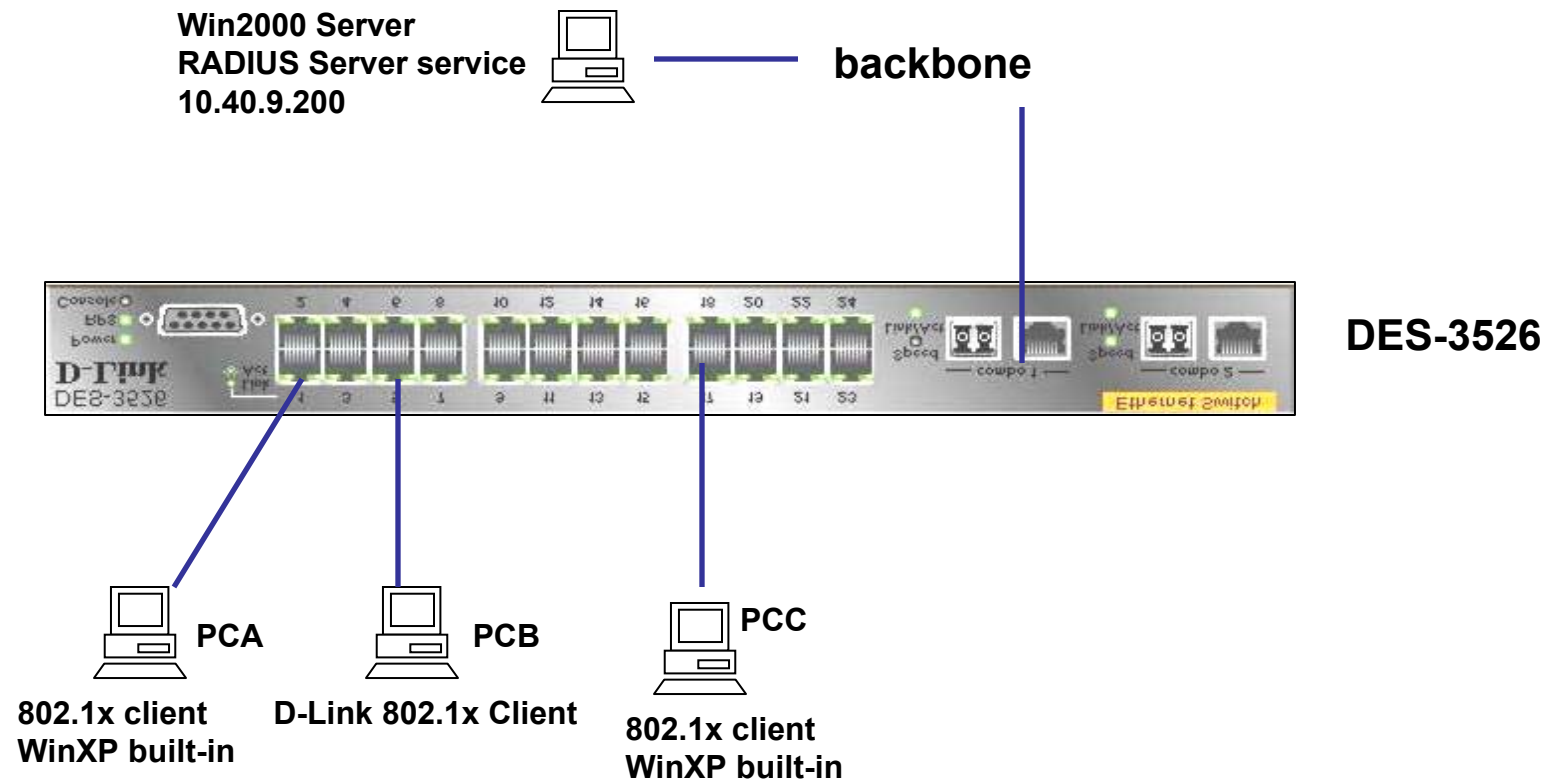


# 802.1x Port-based and MAC-based Access Control



**Before passing the authentication using 802.1x client program with correct username/password, the port is locked. Port will be un-locked after passing the 802.1x client “dial-up.”**

- Workstation: 802.1x client is Window XP built-in. Otherwise, 802.1x client software is needed.
- Switch:
  1. Enable 802.1x State by device  
enable 802.1x
  2. Configure client connected ports. (Note: Uplink port shouldn't enable authenticator).  
config 802.1x capability ports 1-24 authenticator
  3. Configure Radius Server setting  
config radius add 1 10.40.9.200 key 04009 default
- Radius: Windows NT/Windows 2000 Server Radius Server Service or third-party RADIUS server program.