

## 1-Port KVM Switch Over IP

### For Remote Control of Server

- Adds Remote KVM IP Access to Existing Server
- 1 KVM Port to Server
- Ethernet Port for LAN/WAN Connection
- RS-232 Modem Port for Backup
- VGA, PS/2, USB 2.0 Support

#### FEATURES

- **Compatible With Most KVM Switches & All D-Link KVM switches**
- **Uses Popular Web-browser for Handling**
- **Video Refresh Upgradeable From Remote Session**
- **Up to 15 Users Login at the Same Time**
- **256 bit SSL Security**
- **BIOS Level Access**
- **Mouse Synchronization**
- **Video Calibration Adjustment**
- **User-definable Hot Keys**
- **Uses Standard KVM Cables**
- **Auto-Logout When Idle More Than 30 Minutes**
- **Screen Refresh Rate: 1280 x 1024 at 60Hz (Local 1600 x 1200)**
- **Network Time Protocol (NTP) Client**
- **DDNS Support**
- **DHCP Client**

The D-Link DKVM-IP1 KVM Switch over IP provides remote KVM access via a LAN, a WAN, or an Internet connection to a server. Designed for server control with VGA, PS/2 and USB support, this KVM over IP appliance integrates KVM, Ethernet interface and external modem support in a one-box solution.

*Control of Single or Multiple Servers.* The DKVM-IP1 provides secure high-performing KVM Over IP technology with a direct connection to the back of your server. This KVM switch can also be connected to a multi-port KVM switch for control of multiple servers.

*Remote Connection.* The DKVM-IP1 contains a default IP address, which can be easily changed to another IP address used by your network. From a remote site, your IT administrator can key in the IP address of the DKVM-IP1 from a web browser to connect to it and start control a remote server. This type of remote control can help eliminate on-site maintenance costs and service calls, and avoids for you emergency phone calls from your remote data centers. In addition to troubleshooting, this KVM switch can also let an IT administrator upgrade or configure a PC system from the Internet. Another application of this KVM switch is remote mass storage control.

*Security.* The DKVM-IP provides SSL (up to 256-bit) encryption protocol to prevent security breaches.

*Device Interfaces.* The DKVM-IP1 switch includes one interface to a server, which includes a video connection, a PS/2 keyboard connection, a PS/2 mouse connection, and a USB 2.0 connection. To the console side, it has a video port, a PS/2 mouse port and a PS/2 keyboard port. Remote site connection is through a 10/100BASE-TX Ethernet port, which can be connected to a LAN or to a remote router. External modem support is available through an RS-232 COM port, in case your network is down.



## Technical Specifications

### Network/Modem Interfaces

- RJ-45 10/100BASE-TX Ethernet port
- RS-232 DB-9 port

### Console Connection

- 1 mini Din 6 pin connector for keyboard connection
- 1 mini Din 6 pin connector for mouse connection
- 1 HDDB 15 pin connector for monitor connection

### PC or KVM Switch Connection

- 1 mini Din 6 pin connector for keyboard connection
- 1 mini Din 6 pin connector for mouse connection
- 1 HDDB 15 pin connector for monitor connection

### USB

USB 2.0 Type B port

### Reset Button

### LED Indicators

- Link/Speed
- Activity

### VGA Resolution

- Local: 1600 x 1200
- Remote: 1280 x 1024

## Physical & Environmental

### Power

Through 5V 2.5A DC power adapter

### Dimensions

167 x 141 x 27 mm

### Weight

670 grams

### Operating Temperature

0° to 50°C

### Storage Temperature

-20° to 60 °C

### Humidity

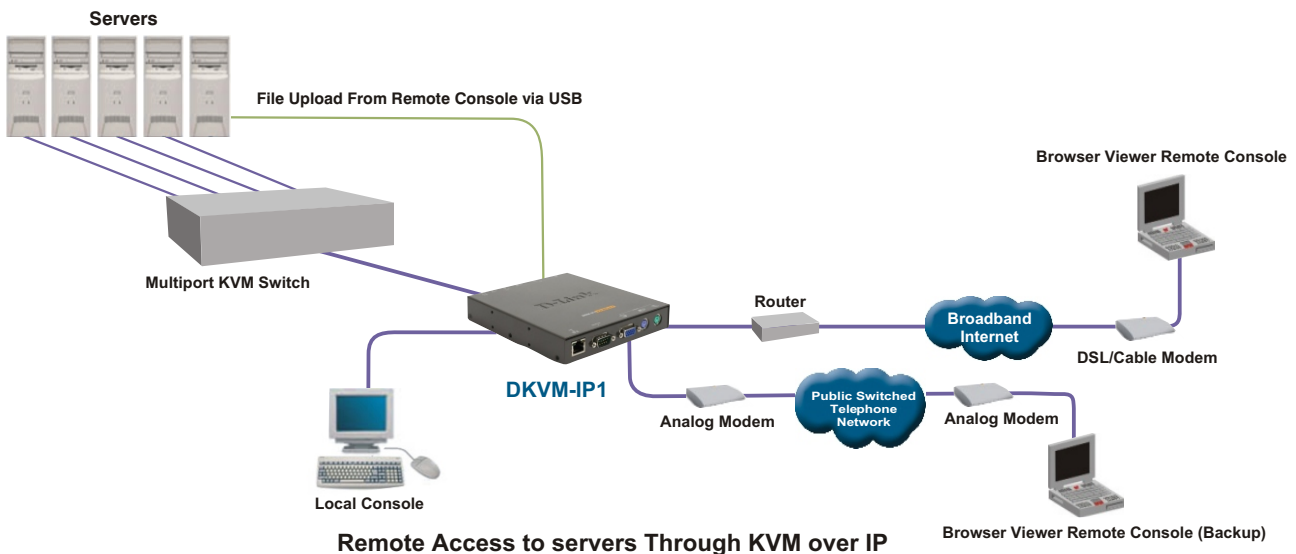
0% to 80% non-condensing

### Emission (EMI)

- FCC Class A
- CE
- C-Tick

### Box Includes

- DKVM-IP1 switch
- Quick Installation Guide
- 3 in1 KVM cable
- Serial cable
- USB 2.0 cable
- CD-ROM with manual and software
- Rack mount kit
- Cat.5 cable
- 5V 2.5A DC power adapter



Remote Access to servers Through KVM over IP

## D-Link Worldwide Offices

### U.S.A.

TEL: 1-800-326-1688

FAX: 1-866-743-4905

### Canada

TEL: 1-905-8295033

FAX: 1-905-8295223

### Europe (U. K.)

TEL: 44-20-8731-5555

FAX: 44-20-8731-5511

### Germany

TEL: 49-6196-77990

FAX: 49-6196-7799300

### France

TEL: 33-1-30238688

FAX: 33-1-30238689

### Netherlands

TEL: 31-10-282-1445

FAX: 31-10-282-1331

### Belgium

TEL: 32(0)2-517-7111

FAX: 32(0)2-517-6500

### Italy

TEL: 39-02-2900-0676

FAX: 39-02-2900-1723

### Sweden

TEL: 46-(0)8564-61900

FAX: 46-(0)8564-61901

### Denmark

TEL: 45-43-969040

FAX: 45-43-424347

### Norway

TEL: 47-99-300-100

FAX: 47-22-309580

### Finland

TEL: 358-9-2707 5080

FAX: 358-9-2707-5081

### Spain

TEL: 34-93-4090770

FAX: 34-93-4910795

### Portugal

TEL: 351-21-8688493

### Czech Republic

TEL: 420-(603)-276-589

FAX: 41(0)-1-832-11-01

### Switzerland

TEL: 41-(0)-1-832-11-00

FAX: 30-210-9916902

### Greece

TEL: 30-210-9914 512

### Luxemburg

TEL: 32-(0)2-517-7111

FAX: 32-(0)2-517-6500

### Poland

TEL: 48-(0)-22-583-92-75

FAX: 48-(0)-22-583-92-76

### Hungary

TEL: 36-(0)-1-461-30-00

FAX: 36-(0)-1-461-30-09

### Singapore

TEL: 65-6774-6233

FAX: 65-6774-6322

### Australia

TEL: 61-2-8899-1800

FAX: 61-2-8899-1868

### India

TEL: 91-022-26526696

FAX: 91-022-26528914

### Middle East (Dubai)

TEL: 971-4-3916480

FAX: 971-4-3908881

### Turkey

TEL: 90-212-289-56-59

FAX: 90-212-289-76-06

### Egypt

TEL: 202-414-4295

FAX: 202-415-6704

### Israel

TEL: 972-9-9715700

FAX: 972-9-9715601

### LatinAmerica

TEL: 56-2-232-3185

FAX: 56-2-232-0923

### Brazil

TEL: 55-11-218-59300

FAX: 55-11-218-59322

### South Africa

TEL: 27-12-665-2165

FAX: 27-12-665-2186

### Russia

TEL: 7-095-744-0099

FAX: 7-095-744-0099 #350

### China

TEL: 86-10-58635800

FAX: 86-10-58635799

### Taiwan

TEL: 886-2-6600-0123

FAX: 886-2-6600-8168

### Headquarters

TEL: 886-2-6600-0123

FAX: 886-2-6600-9898