

D-Link Quick Installation Guide

This product works with the following operating system software: Windows XP, Windows 2000, Windows Me, and Windows 98se



DWL-AB520
D-Link AirPro™ Multimode
Wireless PCI Adapter

Before You Begin

You must have at least the following:

- A desktop computer with an available 32-bit PCI slot
- At least a 300MHz processor and 32MB of memory
- An 802.11a or 802.11b Access Point (for Infrastructure Mode) or another 802.11a or 802.11b wireless adapter (for Ad-Hoc; Peer-to-Peer networking mode).

Check Your Package Contents

These are the items included with your DWL-AB520 purchase:



- DWL-AB520 Wireless Multimode PCI Adapter



- CD-ROM (containing Manual and Warranty)

If any of the items above are missing, please contact your reseller.

1

Insert the D-Link CD-ROM Into Your Computer

Turn on the computer and insert the D-Link AirPro DWL-AB520 Driver CD into the CD-ROM drive. The step-by-step instructions that follow are shown in **Windows XP**. The steps and screens are similar for the other Windows operating systems.



Do NOT install the DWL-AB520 PCI Adapter into your computer before installing the driver software on the D-Link CD-ROM!

1 Insert the D-Link CD continued

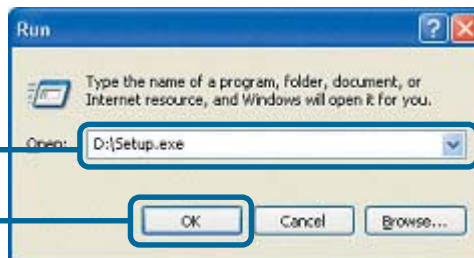
The Install Screen will appear.

Click **Install Drivers & Utility**



If the CD does not automatically start, go to **Start > Run** and type "**D:\Setup.exe**". If it does start, proceed to the next screen.

Type "**D:\Setup.exe**"



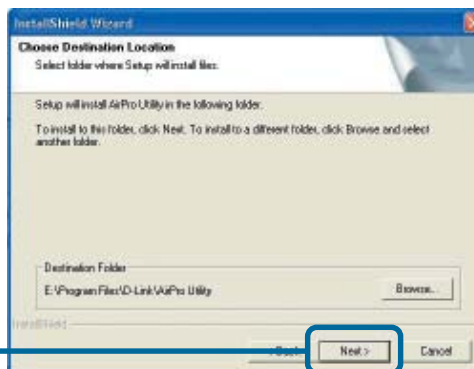
Click **OK**



The letter "D" represents the letter of the CD-ROM drive. Your CD-ROM drive may be a different drive letter.



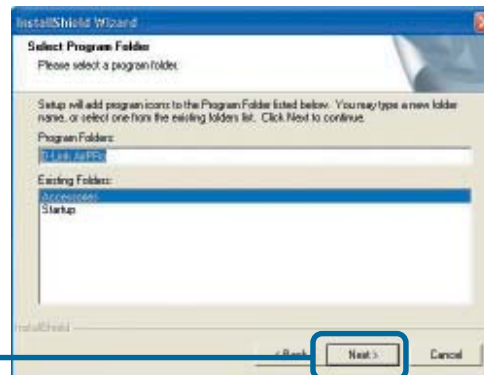
Click **Next**



Click **Next**

1

Continued



Click **Next**



Click **"No, I will restart my computer later"**

Finish

Shut down your computer and **unplug** it from its power source.

2

Install the DWL-AB520 Adapter Into Your Desktop Computer

- A. Make sure to turn off your computer and unplug the power cord before you begin. Remove the back or side cover of the computer.



- B. Carefully guide the DWL-AB520's antenna through the PCI bracket opening adjacent to the PCI slot you intend to use for the DWL-AB520.

2

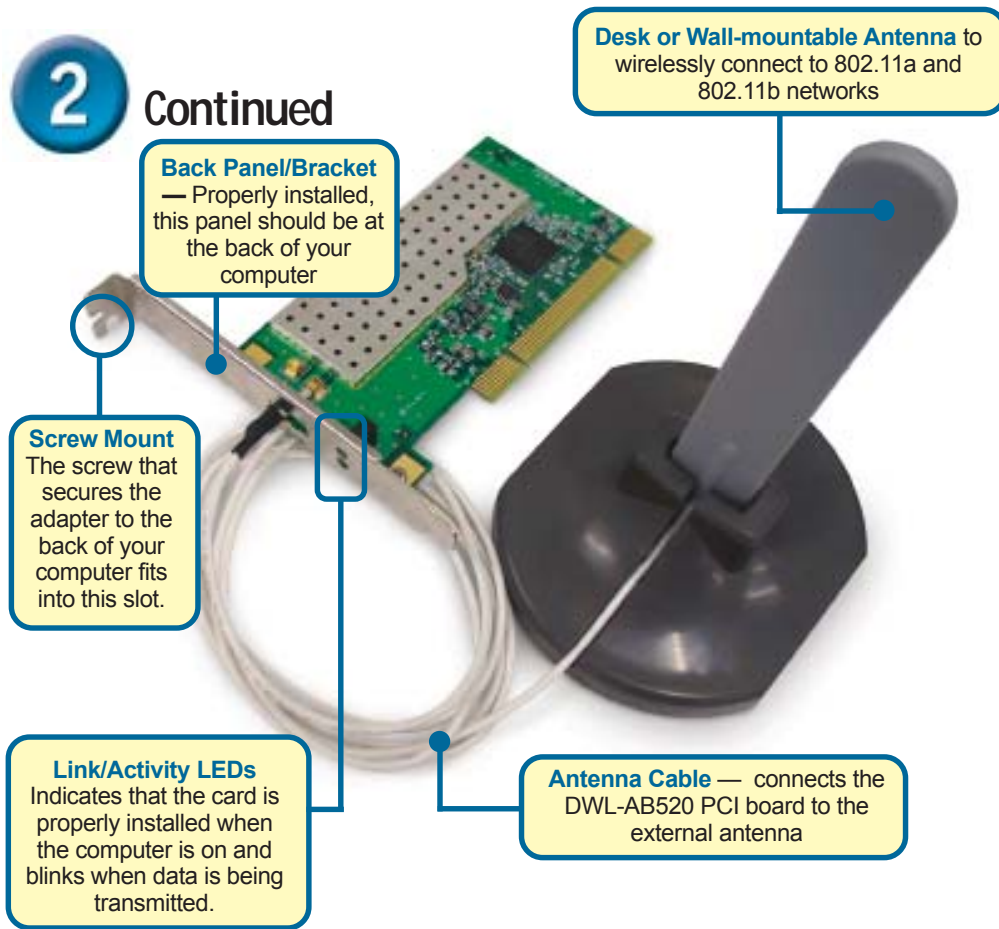
Install the DWL-AB520 Adapter Into Your Desktop Computer continued

- C. Install the DWL-AB520 carefully, and firmly set it into the available PCI slot (which is typically white or cream-colored).
- D. Secure the DWL-AB520's back panel bracket with its mounting screw.
- E. Replace the computer's cover.
- F. Gently connect the antenna to the antenna stand.



2

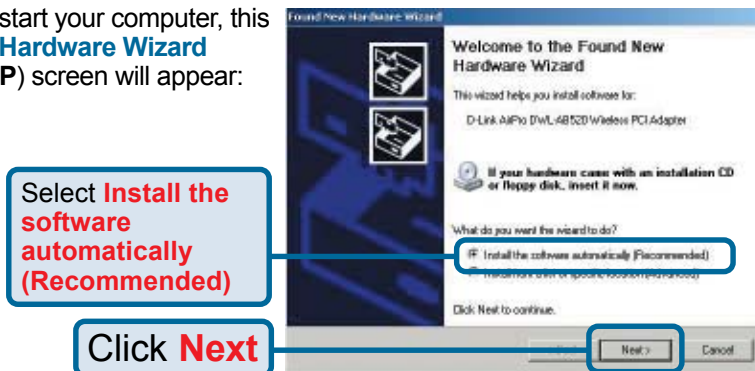
Continued



3

Restart Your Computer

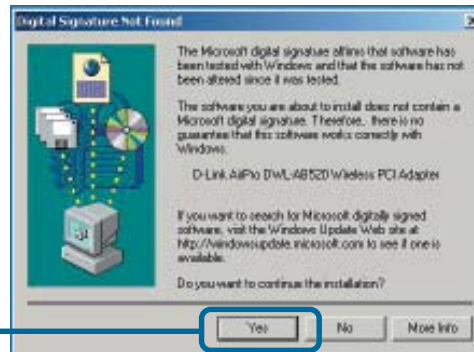
When you restart your computer, this **Found New Hardware Wizard (Windows XP)** screen will appear:



3 Continued

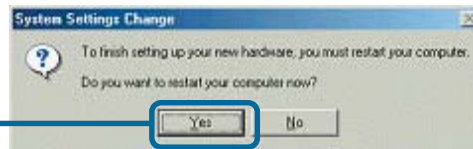
(The D-Link driver software for this device is undergoing Windows Logo testing. Microsoft certification is pending.) For Windows 2000, this Digital Signature Not Found screen may appear after your computer restarts.

Click **Yes** to finalize the installation



For Windows Me and 98se, after your computer restarts, this Systems Change window may appear

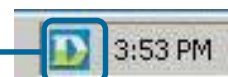
Select **Yes** to finalize the installation



4 Your Installation is Complete!

After you've continued in Windows XP (or after the computer restarts in the other Windows operating systems), the D-Link AirPro DWL-AB520 **Configuration Utility** will automatically start and the utility icon will appear in the bottom right hand corner of the desktop screen (systray). **If this icon appears GREEN, then you have successfully installed the DWL-AB520, connected to a wireless network, and ready to communicate!**

Double-Click the **utility icon** to use the configuration utility.



Note: During the installation in Windows XP, you will have the option to load and utilize the D-Link AirPro Utility for setting your wireless configuration.

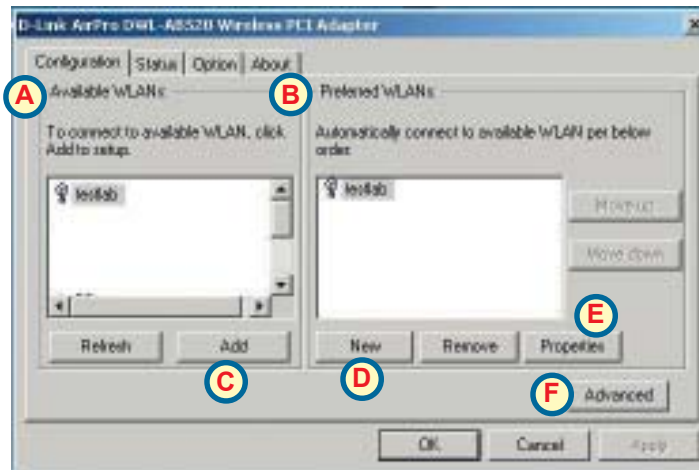
Appendix

Using the Configuration Utility

A. Available WLANs: is a list of all available wireless 802.11a and 802.11b networks.

B. Preferred WLANs: is a list of all available wireless 802.11a and 802.11b networks that you have connected to or are currently connected to.

C. Add: If an Access Point is not listed, click the add button to add it.



D. New: Allows you to add a Preferred WLAN manually.

E. Properties: Allows you to change IP Addresses and Encryption settings for highlighted Preferred WLANs.

F. Advanced: Allows you to change the connection type from Infrastructure to Ad-Hoc.



G. Connection State: Shows current settings and signal strength

H. Hardware Information: Shows MAC Address of your DWL-AB520

I. Advanced State: Shows current settings for Turbo Mode and Ratio State

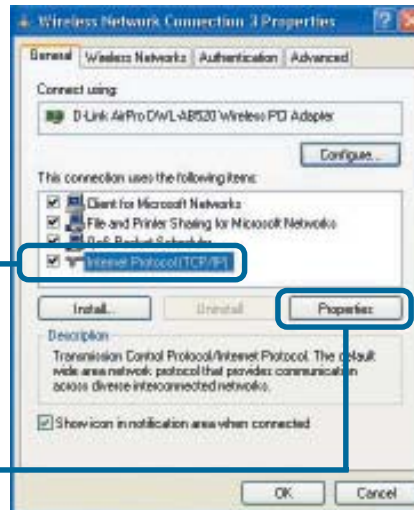
IP Address Configuration

To connect to the network, **make sure the proper network settings are configured for the DWL-AB520.**

For **Microsoft Windows XP:**
Go to **Start > right click on My Network Places > select Properties > Double-click on the Network Connection** associated with the DWL-AB520.

Select **Internet Protocol (TCP/IP)**

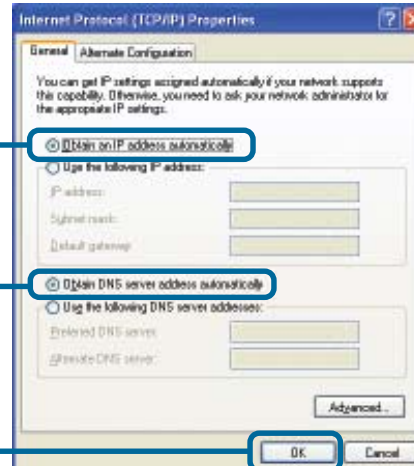
Click **Properties**



Select **Obtain an IP address automatically** (if the Wireless Router or Access Point has DHCP server enabled).

Select **Obtain DNS server address automatically.**

Click **OK**



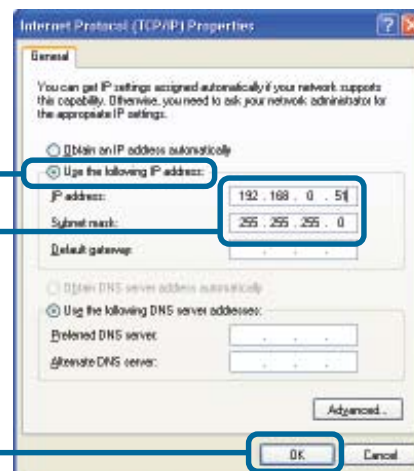
Static IP address setup

Select **Use the following IP address** (if the Wireless Router or Access Point does not have a DHCP server enabled).

IP address: **192.168.0.51**
Subnet mask: **255.255.255.0**

Input a static IP address in the same range as the Wireless Router or Access Point

Click **OK**

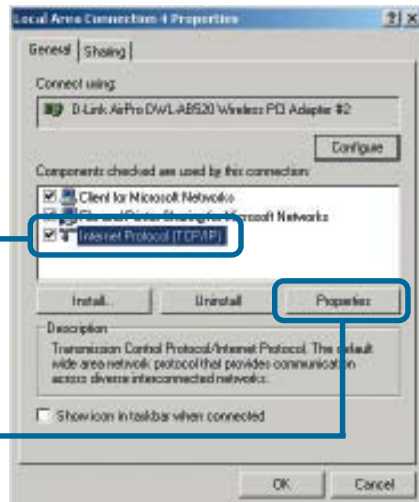


Your Internet Service Provider (ISP) provides preferred DNS server information

For **Windows 2000** users:
Go to **Start > Settings > Network and Dial-up Connections > Double-click on the the Local Area Connection** associated with the DWL-AB520 > select **Properties**.

Click **Internet Protocol (TCP/IP)**

Click **Properties**

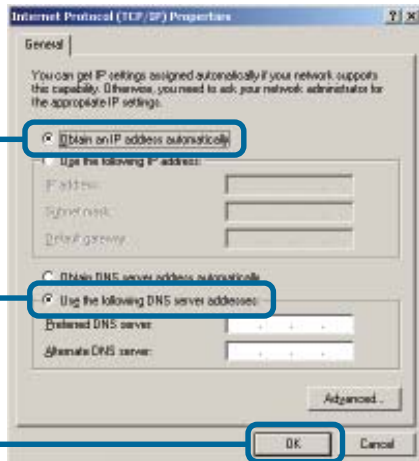


Setup for wireless router or Access Point using DHCP server.

Select **Obtain an IP address automatically** (if the Wireless Router or Access Point has DHCP server enabled).

Select **Obtain DNS server address automatically**.

Click **OK**



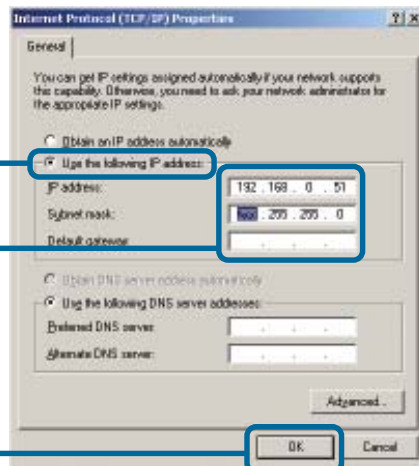
Static IP address setup

Select **Use the following IP address** (if the Wireless Router or Access Point does not have a DHCP server enabled).

IP address: 192.168.0.51
Subnet mask: 255.255.255.0

Input a static IP address in the same range as the Wireless Router or Access Point

Click **OK**

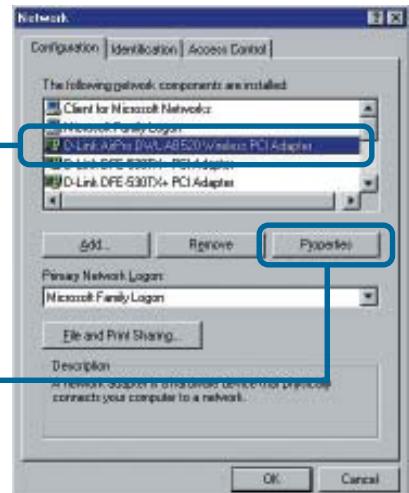


Your Internet Service Provider (ISP) provides preferred DNS server information

For **Windows Me and 98se** users:
 Click > **Internet Protocol (TCP/IP)** > Go to **Start**
 > **Settings** > **Control Panel** > Double-click on the
Local Area Connection associated with the
 DWL-AB520 > select **Properties**.

Click **Internet Protocol (TCP/IP)**

Click **Properties**

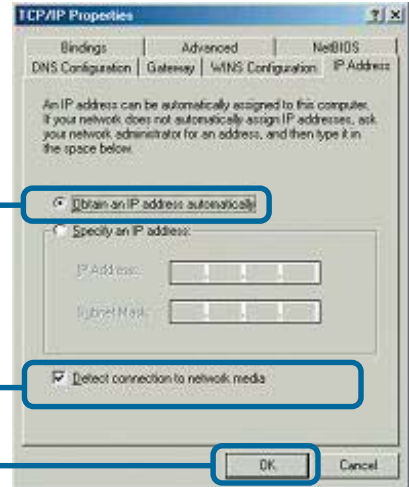


Setup for wireless router or Access
 Point using DHCP server.

Select **Obtain an IP address
 automatically** (if the Wireless
 Router or Access Point has DHCP
 server enabled).

Select **Detect connection
 to network media**

Click **OK**



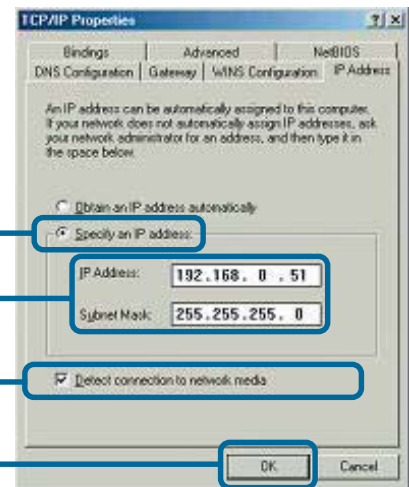
Static IP address setup

Select **Use the following IP address**
 (if the Wireless Router or Access Point
 does not have a DHCP server
 enabled).

IP address: 192.168.0.51
Subnet mask: 255.255.255.0

Select **Detect connection
 to network media**

Click **OK**



Your Internet Service Provider (ISP)
 provides preferred DNS server information

Notes

Technical Support

Software updates and documentation are available on the **D-Link** website.

D-Link provides free technical support for customers within the United States for the duration of the warranty period on this product.

U.S. customers can contact **D-Link** technical support through our web site or by phone.

D-Link Technical Support over the Telephone:

(877) 453-5465

24 hours a day, seven days a week

D-Link Technical Support over the Internet:

<http://support.dlink.com>

email: support@dlink.com

