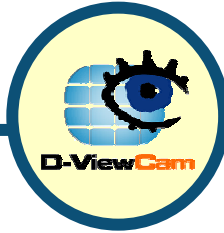


D-Link[®] Quick Installation Guide



D-ViewCam

Central Management
Software for SecuriCam

System Requirements

- Microsoft Windows 2000 Professional SP4, Windows XP Professional SP1, or Windows XP Home Edition SP1
- Pentium 4 2.0 GHz or above, at least 256 MB RAM, 100MB free hard disk space or above
- Network: 10/100 Mbps Ethernet
- Display card: nVidia, TNT2, or GeForce with at least 32 MB display memory
- A CD-ROM drive

Check Hardware Requirement

If you are using D-ViewCam to monitor multiple D-Link Internet cameras, it is recommended to meet these minimum system requirements.

[Note] Recording video over a long period of time will consume large amounts of disk space. Make sure that you have at least required disk space available. You can still complete this installation even if you have less than suggested free disk space.

For 1 to 4 channels:

CPU: Intel P-4 2.8G Hz or above

SDRAM: 512MB Memory

Hard Disk: 40GB or above

For 5 to 9 channels:

CPU: Intel P-4 2.8G Hz or above

SDRAM: 512MB Memory

Hard Disk: 60GB or above

For 10 to 16 channels:

CPU: P-4 3.0 G Hz or better processor

SDRAM: 1G Memory

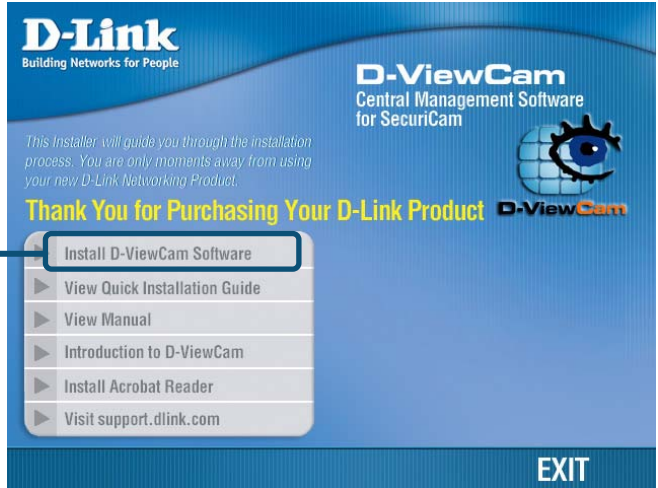
Hard Disk: 80GB or above

1

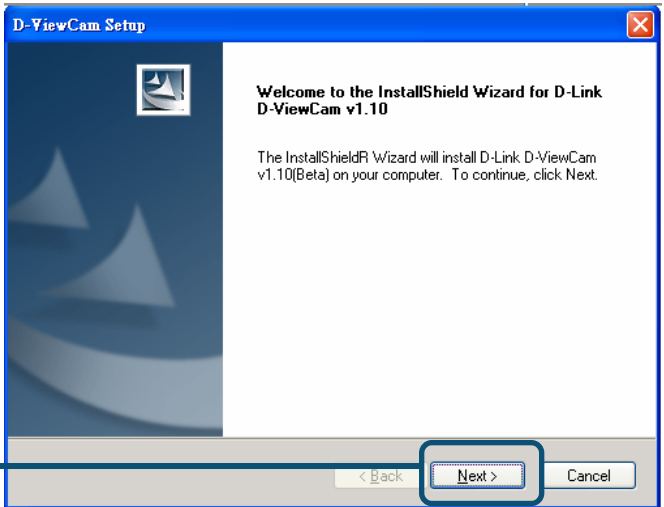
Installing the D-ViewCam Software

Insert the D-Link D-ViewCam software CD into your CD-ROM drive.

Click on **Install D-ViewCam Software**

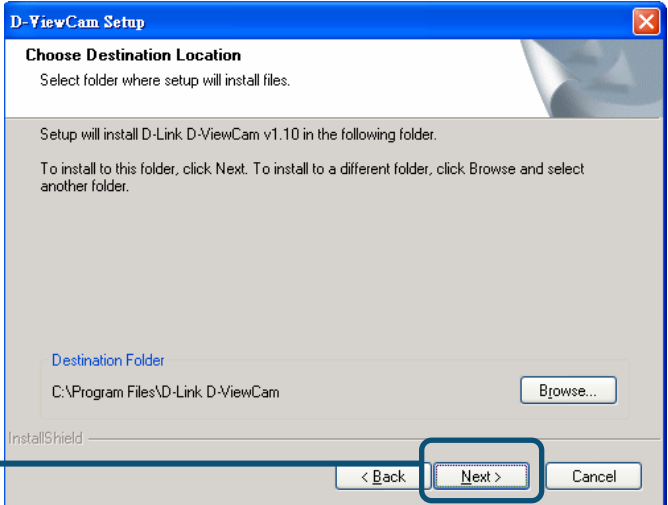
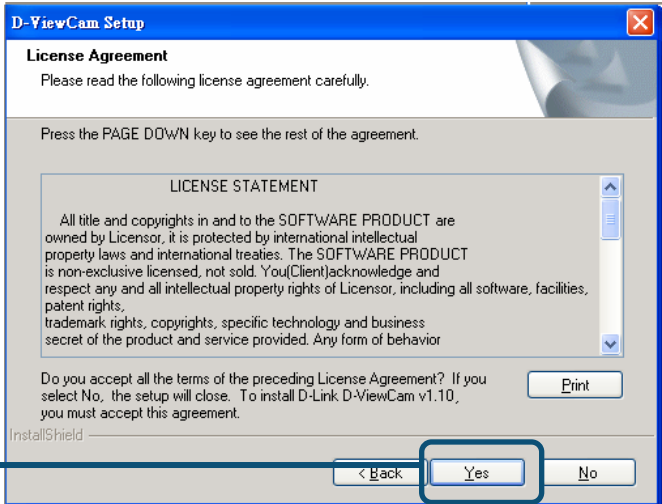


Click **Next**



1

Installing the D-ViewCam Software (continued)



1

Installing the D-ViewCam Software (continued)

D-ViewCam Setup

Choose Destination Location
Input folder path to store record files.

Please input schedule record path and storage size(GB).
Path: C:\Program Files\D-Link D-ViewCam\Schedule Browse... Volume: 20

Please input alarm record path and storage size(GB).
Path: C:\Program Files\D-Link D-ViewCam\Alarm Browse... Volume: 10

Please input manual record path and storage size(GB).
Path: C:\Program Files\D-Link D-ViewCam\ManualRecord Browse... Volume: 20

Please input snapshot path.
Path: C:\Program Files\D-Link D-ViewCam\Snapshot Browse...

Please input backup DB path.
Path: C:\Program Files\D-Link D-ViewCam\Backup Browse...

InstallShield

< Back Next > Cancel

Click Next

[Note] Recording video over a long period of time will consume large amounts of disk space. Make sure that you have at least 1GB disk space available. You can still complete this installation even if you have less than 1GB free disk space.

D-ViewCam Setup

Select Program Folder
Please select a program folder.

Setup will add program icons to the Program Folder listed below. You may type a new folder name, or select one from the existing folders list. Click Next to continue.

Program Folder:
D-Link D-ViewCam

Existing Folders:
Ahead Nero
Microsoft Office Tools
Microsoft Office
Microsoft SQL Server
Microsoft SQL Server - Switch
Microsoft Visual Studio 6.0
Symantec Client Security
WinRAR

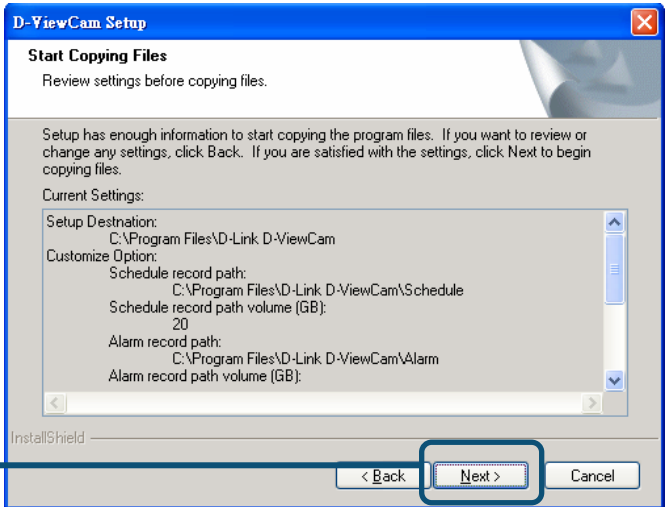
InstallShield

< Back Next > Cancel

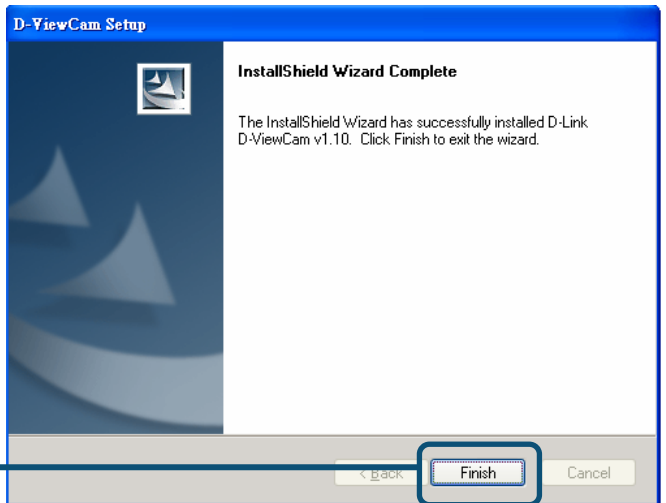
Click Next

1

Installing the D-ViewCam Software (continued)



Click **Finish**, and the system will activate D-Link D-ViewCam.

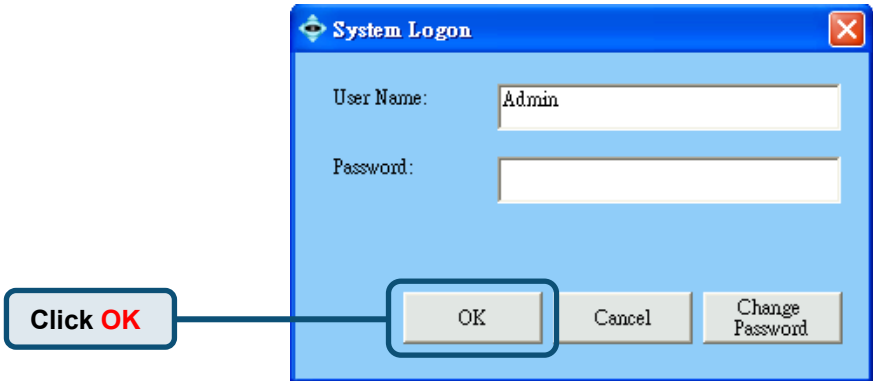
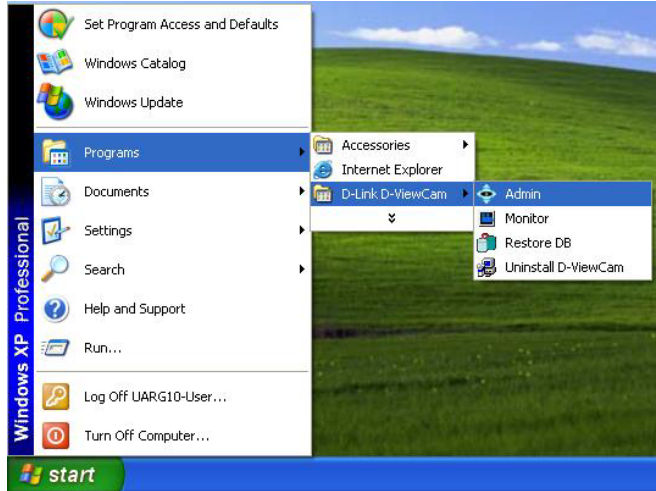


Congratulations! You've successfully installed D-Link D-ViewCam.

2

Configuring your Camera with D-ViewCam

Run Start > All Programs > D-Link D-ViewCam > Admin

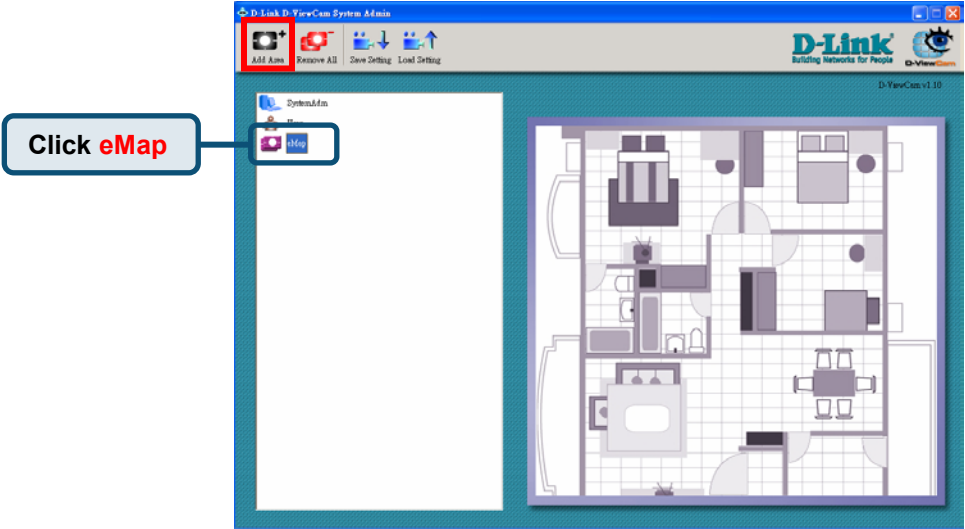


There is no password for Admin's account by default, please assign the Admin password by click on "Change Password."

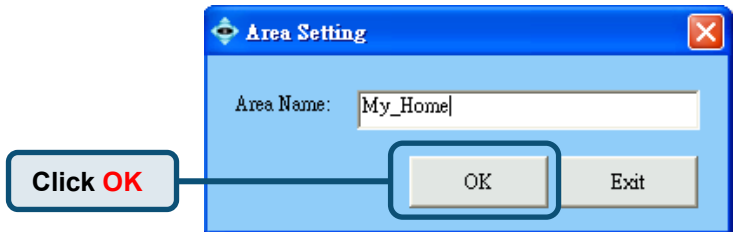
2

Configuring your Camera with D-ViewCam (continued)

Click **eMap** on the tree structure and the **Add Area** icon in menu bar.



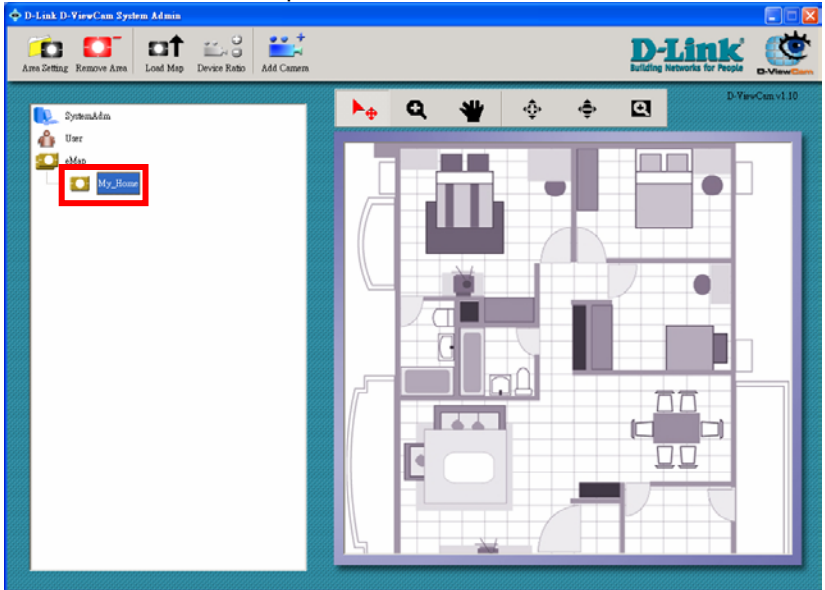
Enter the 'Area Name' and click **OK**.



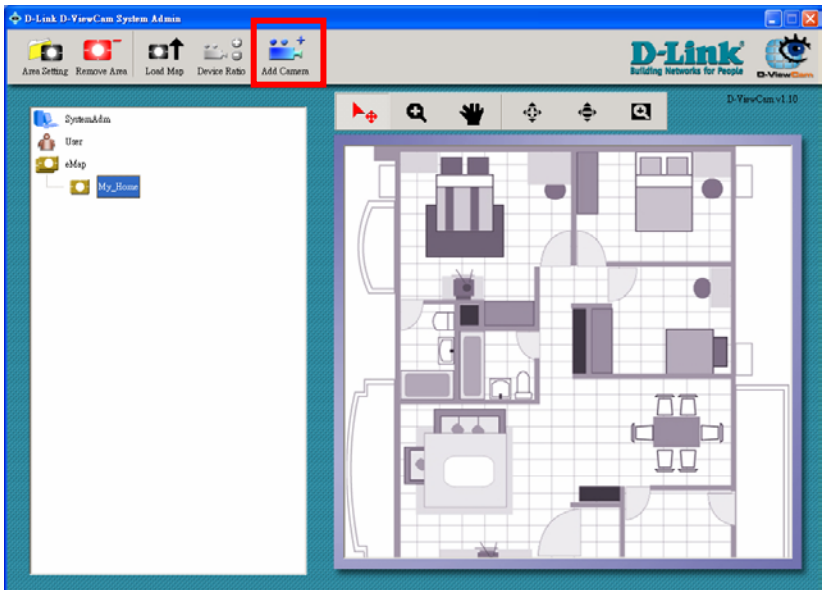
2

Configuring your Camera with D-ViewCam (continued)

An area is created and shown under eMap.



Click the **Add Camera** icon in menu bar.



2

Configuring your Camera with D-ViewCam (continued)

For **Model**, select a model that corresponds to your Internet Camera, and then fill in the MAC address, IP address, Port No., Location, Camera User name, Camera Password for that camera. Then click **OK** to continue.

[Note]

- The MAC address can be found on device label, which is on the bottom or the back of your camera.
- The default Port No. is 80, which is suitable for most situations.
- The Location is preset as CAM01, CAM02, etc.
- Camera User name, Camera Password and port number need to be entered to match the camera web configuration.

Camera Setting

Model: DCS-900 ver. Ax

MAC Address: 050012345678

IP Address: 192.168.0.101

Port No: 80

Location: CAM01

Camera User Name: admin

Camera Password: *****

OK Cancel

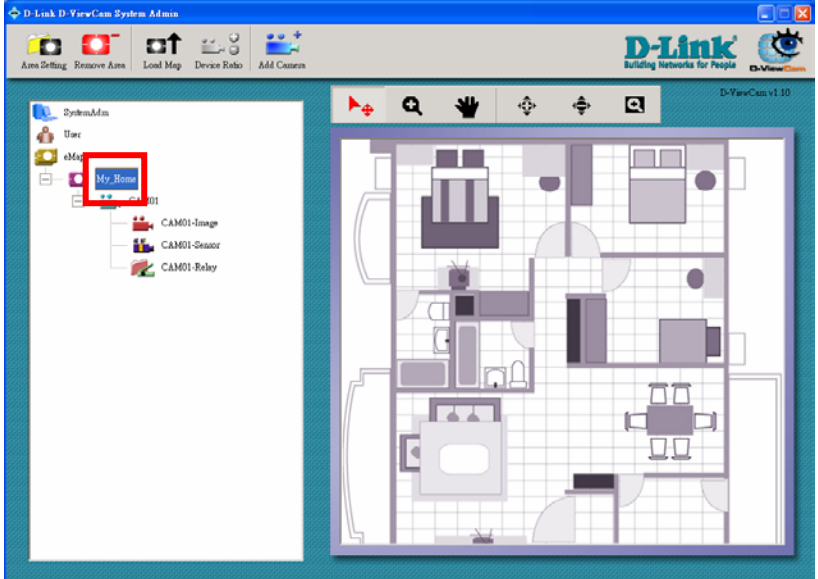
[Note]

You can also setup other D-Link cameras using the same steps described above.

2

Configuring your Camera with D-ViewCam (continued)

The camera is created and is shown under eMap (eMap\your area name\camera name).



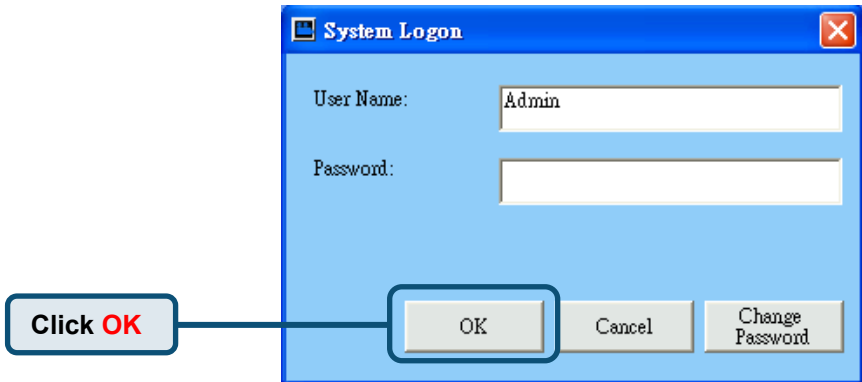
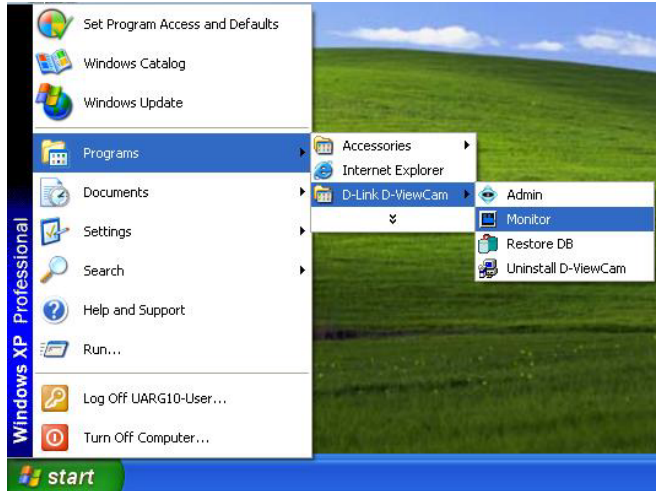
[Note]

You can drag the CAM01-Image icon to a desired location to your eMap on the right-hand of the screen; double click on the camera icon for video monitoring.

3

Monitor the Camera with D-ViewCam

Run Start > All Programs > D-Link D-ViewCam > Monitor

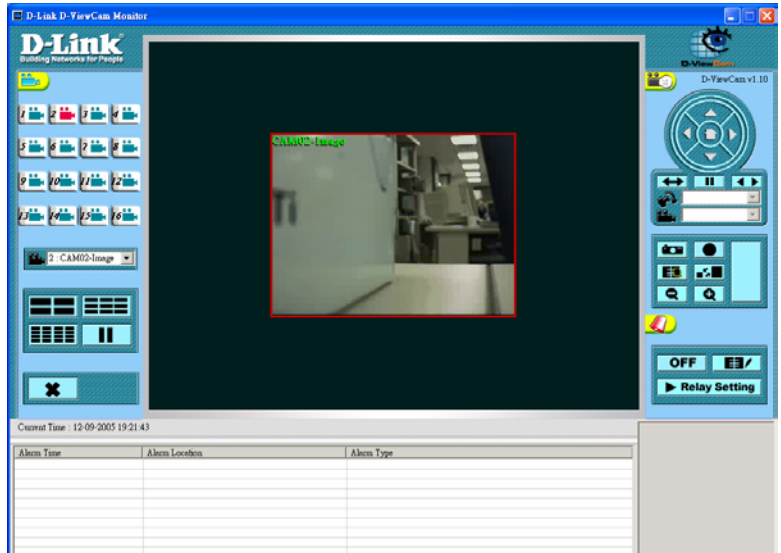


There is no password for Admin's account by default, please assign the Admin password by click on "Change Password."

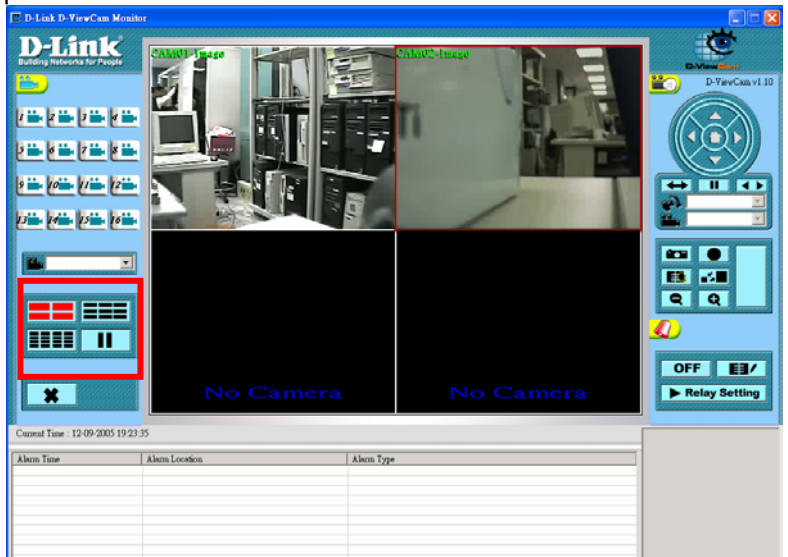
3

Monitoring your Camera with D-ViewCam (continued)

Now, you can see the image from the camera in the middle of the monitor screen. Congratulations! You have successfully configured your Internet Camera to your D-Link D-ViewCam.



Alternatively, you may click the **4-Split** icon (or the 9-Split or 16-Split icon) to display more than one streaming video on the screen. In order to do this, you need to finish configuring your multiple cameras first.



Technical Support

You can find software updates and user documentation on the D-Link website.

D-Link provides free technical support for customers within the United States and within Canada for the duration of the warranty period on this product.

U.S. and Canadian customers can contact D-Link technical support through our website, or by phone.

Tech Support for customers within the United States:

D-Link Technical Support over the Telephone:

(877) 453-5465

24 hours a day, seven days a week.

D-Link Technical Support over the Internet:

<http://support.dlink.com>

[email:support@dlink.com](mailto:support@dlink.com)

Tech Support for customers within Canada:

D-Link Technical Support over the Telephone:

(800) 361-5265

Monday to Friday 7:30am to 12:00am EST

D-Link Technical Support over the Internet:

<http://support.dlink.ca>

[email:support@dlink.ca](mailto:support@dlink.ca)



Technical Support

You can find software updates and user documentation on the D-Link websites.

D-Link provides free technical support for customers within Canada, the United Kingdom, and Ireland.

Customers can contact D-Link technical support through our websites, or by phone.

For Customers within The United Kingdom & Ireland:

D-Link UK & Ireland Technical Support over the Telephone:

08456 12 0003 (United Kingdom)

+44 8456 12 0003 (Ireland)

Monday to Friday 8:00 am to 10:00 pm GMT

Sat & Sun 10.00 am to 7.00 pm GMT

D-Link UK & Ireland Technical Support over the Internet:

<http://www.dlink.co.uk>

<ftp://ftp.dlink.co.uk>

Technical Support

You can find software updates and user documentation on the D-Link website.

Tech Support for customers within Australia:

D-Link Technical Support over the Telephone:

1300-766-868

Monday to Friday 8:00am to 8:00pm EST

Saturday 9:00am to 1:00pm EST

D-Link Technical Support over the Internet:

<http://www.dlink.com.au>

email: support@dlink.com.au

Tech Support for customers within New Zealand:

D-Link Technical Support over the Telephone:

0800-900-900

Monday to Friday 8:30am to 8:30pm

Saturday 9:00am to 5:00pm

D-Link Technical Support over the Internet:

<http://www.dlink.co.nz>

email: support@dlink.co.nz

D-Link[®]
Building Networks for People

Technical Support

You can find software updates and user documentation on the D-Link website.

Tech Support for customers within South Eastern Asia and Korea:

D-Link South Eastern Asia and Korea Technical Support over the Telephone:

+65-6895-5355

Monday to Friday 9:00am to 12:30pm, 2:00pm-6:00pm
Singapore Time

D-Link Technical Support over the Internet:

email: support@dlink.com.sg



Technical Support

You can find software updates and user documentation on the D-Link website.

Tech Support for customers within India

D-Link Technical Support over the Telephone:

+91-22-26526741

+91-22-26526696 –ext 161 to 167

Monday to Friday 9:30AM to 7:00PM

D-Link Technical Support over the Internet:

<http://www.dlink.co.in>

<http://www.dlink.co.in/dlink/drivers/support.asp>

<ftp://support.dlink.co.in>

email: techsupport@dlink.co.in



Technical Support

You can find software updates and user documentation on the D-Link website.

D-Link provides free technical support for customers for the duration of the warranty period on this product.

Customers can contact D-Link technical support through our web site or by phone.

Tech Support for customers within the Russia

D-Link Technical Support over the Telephone:

(095) 744-00-99

Monday to Friday 10:00am to 6:30pm

D-Link Technical Support over the Internet

<http://www.dlink.ru>

email: support@dlink.ru



Technical Support

You can find software updates and user documentation on the D-Link website.

Tech Support for customers within the U.A.E & North Africa:

D-Link Technical Support over the Telephone:

(971) 4-391-6480 (U.A.E)

Sunday to Wednesday 9:00am to 6:00pm GMT+4

Thursday 9:00am to 1:00pm GMT+4

D-Link Middle East & North Africa

D-Link Technical Support over the Internet:

<http://support.dlink-me.com>

email:support@dlink-me.com

Tech Support for customers within Israel:

D-Link Technical Support over the Telephone:

(972) 971-5701

Sunday to Thursday 9:00am to 5:00pm

D-Link Technical Support over the Internet:

<http://www.dlink.co.il/forum>

e-mail: support@dlink.co.il

Tech Support for customers within Turkey:

D-Link Technical Support over the Telephone:

(+90) 212-289 56 59

Monday to Friday 9:00am to 6:00pm

D-Link Technical Support over the Internet:

<http://www.dlink.com.tr>

e-mail: turkiye@dlink-me.com

Tech Support for customers within Egypt:

D-Link Technical Support over the Telephone:

(202) 414-4295

Sunday to Thursday 9:00am to 5:00pm

D-Link Technical Support over the Internet:

<http://support.dlink-me.com>

e-mail: amostafa@dlink-me.com

D-Link®
Building Networks for People

Technical Support

You can find software updates and user documentation on the D-Link website.

Tech Support for customers within South Africa and Sub Sahara Region:

D-Link South Africa and Sub Sahara Technical Support over the Telephone:

+27-12-665-2165

08600 DLINK (For South Africa only)

Monday to Friday 8:30am to 9:00pm South Africa Time

D-Link Technical Support over the Internet:

<http://www.d-link.co.za>

email: support@d-link.co.za



Technical Support

You can find updates and user documentation on the D-Link website

Tech Support for Latin America customers:

D-Link Technical Support over the followings Telephones:

Argentina: 0800-666 1442	Monday to Friday 09:00am to 22:00pm
Chile: 800-214 422	Monday to Friday 08:00am to 21:00pm
Colombia: 01800-700 1588	Monday to Friday 07:00am to 20:00pm
Ecuador: 1800-777 711	Monday to Friday 07:00am to 20:00pm
El Salvador: 800-6137	Monday to Friday 06:00am to 19:00pm
Guatemala: 1800-300 0017	Monday to Friday 06:00am to 19:00pm
Panama: 0800-560 0193	Monday to Friday 07:00am to 20:00pm
Peru: 0800-52049	Monday to Friday 07:00am to 20:00pm
Venezuela: 0800-100 3470	Monday to Friday 08:00am to 21:00pm

D-Link Technical Support over the Internet:

www.dlinkla.com

www.dlinklatinamerica.com

email: support@dlink.cl

Tech Support for customers within Brazil:

D-Link Technical Support over the Telephone:

0800-7014104

Monday to Friday 8:30am to 18:30pm

D-Link Technical Support over the Internet:

www.dlinkbrasil.com.br

email: suporte@dlinkbrasil.com.br

D-Link[®]
Building Networks for People

D-Link[®]



RECYCLABLE

Ver.1.10

2005/12/12