

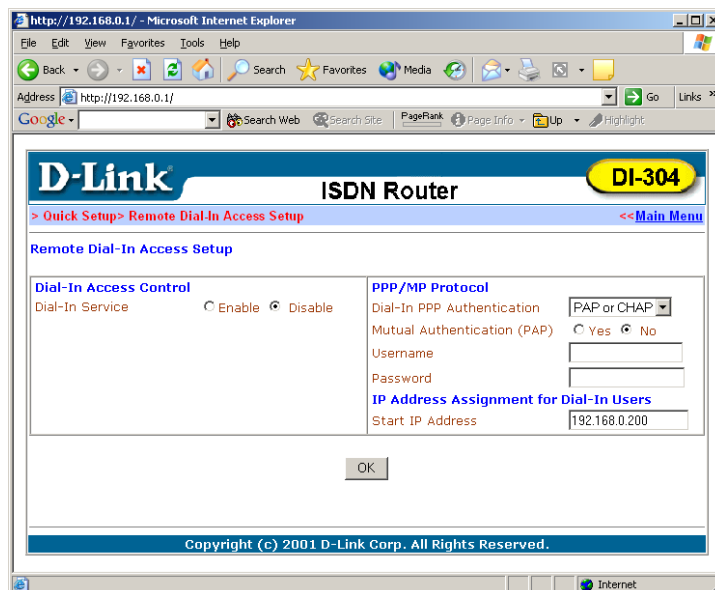
DI-304 Installation Guide for Remote Access

To configure the router for remote access, follow the screens setting below.

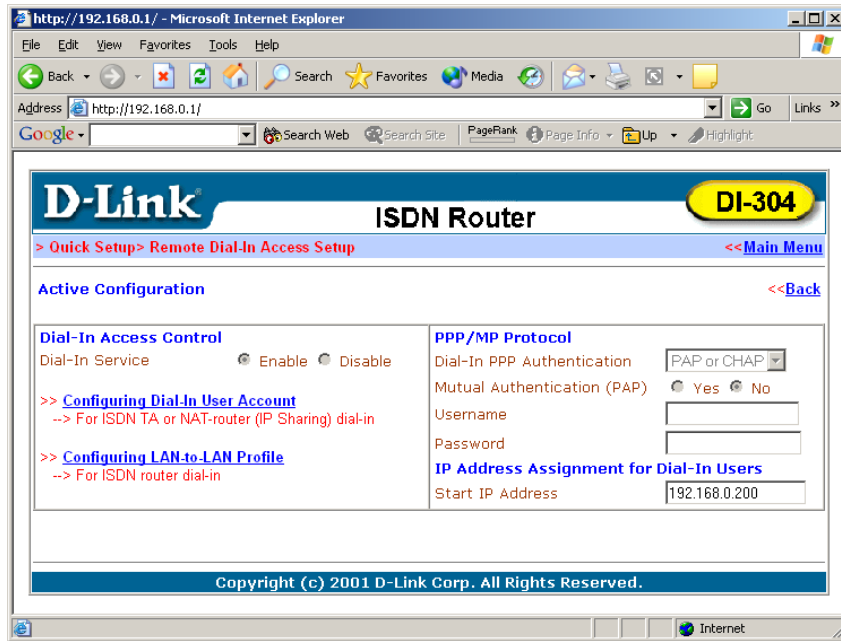
Select Remote Dial in Access Setup



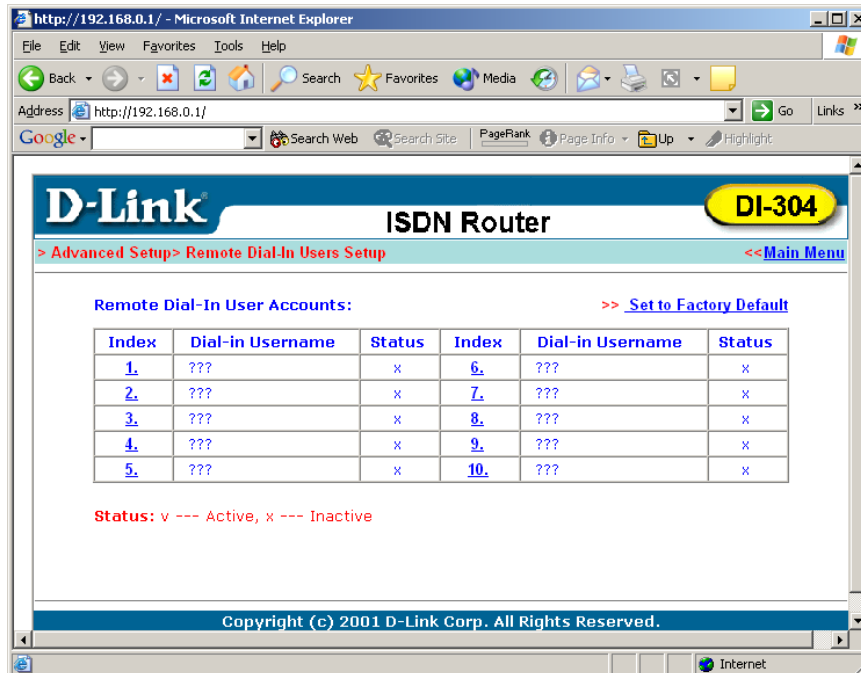
Enable Dial In Service



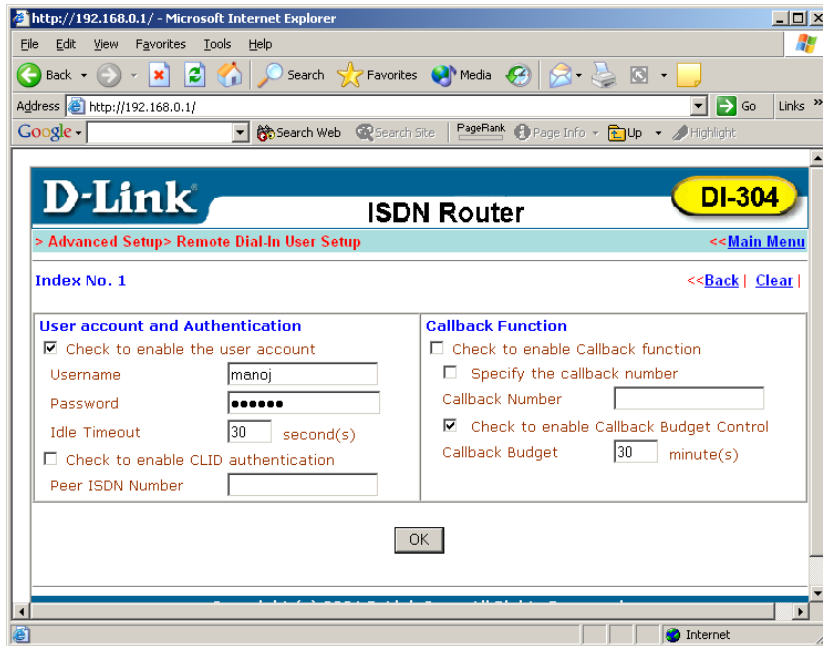
Select
Configuring
Dial in User
Account



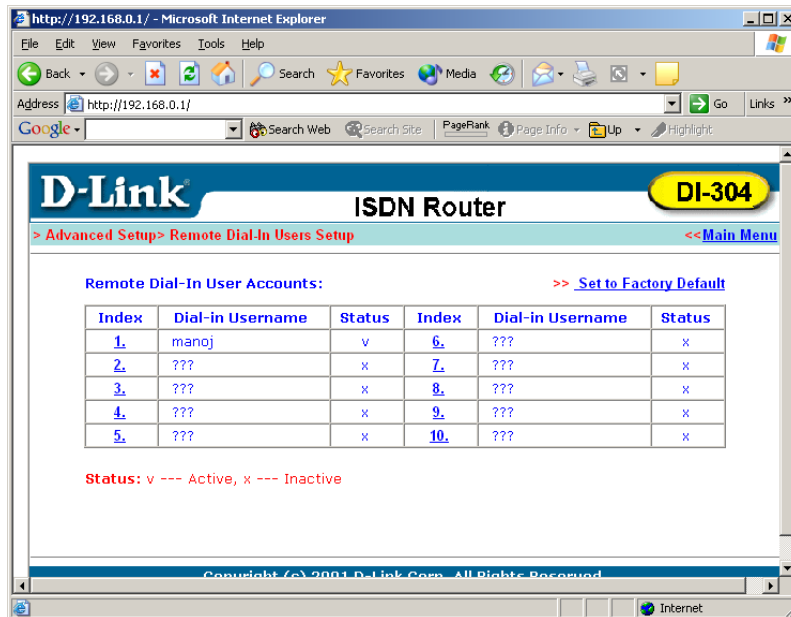
Up to 10
Remote logins
can be
configured.
Select the first
available
index.



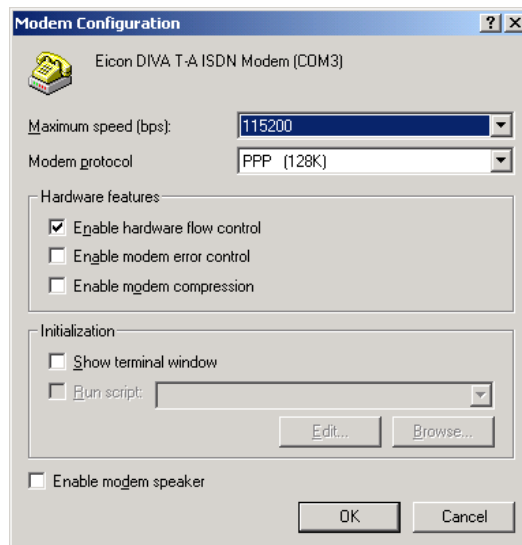
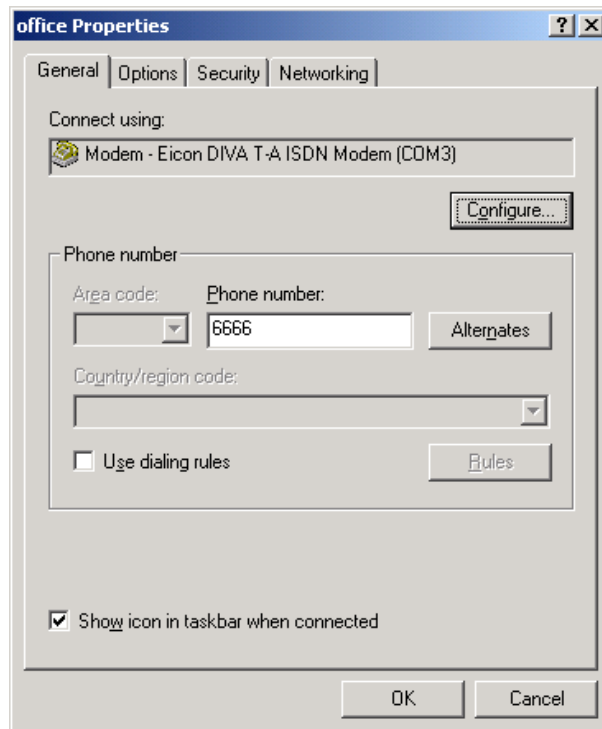
Check the enable box. Complete the username and password details. Then click okay.



Check the status of the profile. A 'v' indicates that its active. Select the 'main menu' and return to the main menu.



Windows 2000 Workstation Dial Up Setup



~ End of Document ~