



## DCS-4705E

# 5-Megapixel Outdoor Mini Bullet Camera

### Features

#### Exceptional Video Quality

- 1/2.5" 5-megapixel progressive CMOS sensor
- Fixed lens with focal length of 2.8 mm and an F2.0 aperture
- Up to a resolution of 2592 x 1944 at 15 fps
- Wide Dynamic Range (WDR) image enhancement
- 3D filtering reduces image noise in low-light environments
- H.265, H.264 and MJPEG codec support for streaming and recording
- Motion Detection
- Privacy Mask

#### Outdoor placement

- Built-in IR LED illuminator with a 30 metre range for use in dark areas
- Works in a wide range of climates from -30 °C to 50 °C
- Protective bracket for cables
- IP66 certified housing
- Glare reducing sun shield

#### Flexibility and Connectivity

- 10/100 Fast Ethernet port with PoE (Power over Ethernet) ensures easy integration into your network

The D-Link DCS-4705E 5-Megapixel Outdoor Mini Bullet Camera is a high-definition professional surveillance and security solution suitable for small, medium, and large enterprises. The camera uses a high-sensitivity 5-megapixel progressive scan CMOS sensor to deliver truly superior quality video under a wide range of lighting conditions. The all-in-one rugged design makes this camera ideal for reliable deployment in surveillance applications without the need for additional accessories.

### High-Quality Streaming & Recording

To maximise bandwidth efficiency and improve image quality, the DCS-4705E provides real-time video compression using H.265, H.264 and MJPEG codecs for simultaneous video streaming and recording. Video resolutions of up to 2592 x 1944 provide clear details and noise reduction that improves video quality that may be useful in cases when forensic image analysis is required for evidence. Additional support for motion detection and event management features allow for implementation in a wide variety of surveillance applications such as monitoring public areas to detect incidents and to coordinate responses, to enforce access control to restricted areas, to deter criminal activity, or to monitor inventory.

### Versatile Monitoring in All Environments

In low-light situations, the IR-cut filter automatically slides out of the way to use all available light. The DCS-4705E also has built-in IR LED illuminators with a 30-metre range, allowing the camera to provide outstanding performance even in complete darkness. IP66 certified housing ensures the camera is completely protected from dust and water. These features work together to give you a reliable surveillance camera capable of monitoring indoors or outdoors 24/7 in a variety of environments.

### Convenient Connectivity

The DCS-4705E has a built-in 802.3af-compliant PoE module that eases installation by providing power and networking connectivity with a single cable, reducing the need to drill holes or lay additional cabling.

### Robust Management Software

The 5-Megapixel Outdoor Mini Bullet Camera includes D-ViewCam, a complete surveillance software package that enables you to view, manage, and record from up to 32 cameras on a single computer from a central location. Recordings and e-mail alerts can be triggered through motion detection, keeping administrators informed of any unusual activity.



#### 5-Megapixel Outdoor Mini Bullet Camera

DCS-4705E

#### 5 Megapixel Quality and H.265 Compression

- An ultra-sharp 5 megapixel sensor and H.265 compression to strike a perfect balance between high image quality and streaming bandwidth efficiency

#### Reliable 24-Hour Surveillance

- Infrared LED illuminators provide sharp images at night up to 30 metres for dependable 24-hour surveillance

#### Outdoor Installation

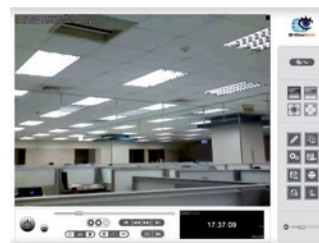
- The IP66 rated weatherproof enclosure means the camera can be mounted outdoors in temperatures ranging from -30 to 50 °C

### Free D-ViewCam™ Video Management Software DCS-100

Bundled free with D-Link network cameras D-ViewCam enables users to centrally manage multiple cameras for home or businesses.

Supporting up to 32 network cameras and up to 64 users, D-ViewCam is compatible with all current D-Link network cameras and video servers, offers digital monitoring and recording with a wide array of features including simultaneous video recording, playback and live view.

D-ViewCam offers scheduled, motion and manual recording. Recorded files can be searched by video type and selected files can be played, edited and converted into AVI or ASF files. The e-map mode in the application allows users to arrange a map with camera locations and orientation, while additional features such as auto-patrol, rotate, zoom, and focus provide optimal control over video surveillance.



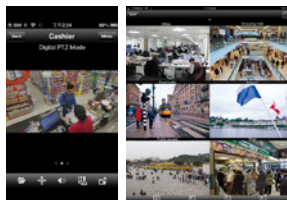
Playback view



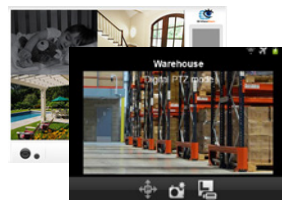
Live view

### D-ViewCam Mobile

Keep an eye on your surveillance cameras anytime, anywhere with D-Link's D-ViewCam Mobile app. The D-ViewCam Mobile app makes it easy to check on your business no matter where you are, no matter what time of day it is.



For iPhones/iPads



For Android devices



D-ViewCam



## Technical Specifications

### Camera

Camera Hardware Profile	<ul style="list-style-type: none"> <li>• 1/2.5" 5-megapixel progressive CMOS sensor</li> <li>• 30 metre IR illumination distance</li> <li>• Minimum illumination:               <ul style="list-style-type: none"> <li>• 0.1 lux (color)</li> <li>• 0.05 lux (B/W)</li> <li>• 0 lux (IR LED on)</li> </ul> </li> <li>• Built-in Infrared-Cut Removable (ICR) Filter module</li> <li>• 10x digital zoom</li> <li>• Minimum object distance 0.5 m</li> </ul>	<ul style="list-style-type: none"> <li>• Focal length: 2.8 mm</li> <li>• Aperture: F2.0</li> <li>• Angle of view:               <ul style="list-style-type: none"> <li>• (H) 90°</li> <li>• (V) 50°</li> <li>• (D) 104°</li> </ul> </li> </ul>
Camera Housing	<ul style="list-style-type: none"> <li>• IP66 compliant weatherproof housing</li> </ul>	<ul style="list-style-type: none"> <li>• Wire-in bracket</li> </ul>
Image Features	<ul style="list-style-type: none"> <li>• Configurable image size, quality, frame rate, and bit rate</li> <li>• Time stamp and text overlays</li> <li>• Configurable motion detection windows</li> <li>• Configurable privacy mask zones</li> <li>• Temper detection alarm</li> </ul>	<ul style="list-style-type: none"> <li>• Configurable shutter speed, brightness, saturation, contrast, and sharpness</li> <li>• WDR</li> <li>• 3D filter</li> </ul>
Video Compression	<ul style="list-style-type: none"> <li>• Simultaneous H.265/H.264/MJPEG format compression</li> <li>• H.265/H.264/MJPEG multicast streaming</li> </ul>	<ul style="list-style-type: none"> <li>• JPEG for still images</li> </ul>
Video Resolution	<ul style="list-style-type: none"> <li>• 16:9 - 2592 x 1440 up to 15 fps, 1920 x 1080, 1280 x 720, 800 x 448, 640 x 360 up to 30 fps</li> </ul>	<ul style="list-style-type: none"> <li>• 4:3 - 2560 x 1920 up to 15 fps, 1600 x 1200, 1440 x 1080, 1280 x 960, 800 x 600, 640 x 480 up to 30 fps</li> </ul>
External Device Interface	<ul style="list-style-type: none"> <li>• 10/100BASE-TX Fast Ethernet port</li> </ul>	<ul style="list-style-type: none"> <li>• Supports 802.3af PoE Class 2</li> </ul>

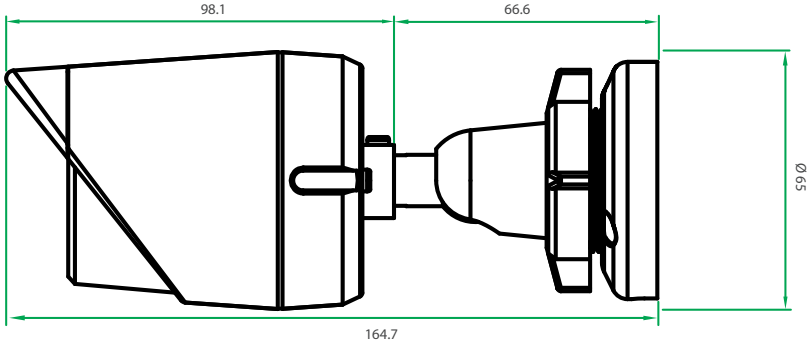
### Network

Network Protocols	<ul style="list-style-type: none"> <li>• IPv6</li> <li>• IPv4</li> <li>• TCP/IP</li> <li>• UDP</li> <li>• ARP</li> <li>• ICMP</li> <li>• DHCP client</li> <li>• NTP client (D-Link)</li> <li>• DNS client</li> <li>• DDNS client (D-Link)</li> <li>• SMTP client</li> <li>• 802.1x</li> <li>• ONVIF-compliant</li> </ul>	<ul style="list-style-type: none"> <li>• FTP client</li> <li>• HTTP server</li> <li>• HTTPS (TLS, disable SSL v3)</li> <li>• Samba client</li> <li>• PPPoE</li> <li>• Bonjour</li> <li>• UPnP port forwarding</li> <li>• RTP / RTSP / RTCP</li> <li>• IP filtering</li> <li>• Multicast</li> <li>• SNMP v1/v2c/v3</li> <li>• QoS/CoS</li> </ul>
Security	<ul style="list-style-type: none"> <li>• Administrator and user group protection</li> <li>• Password authentication</li> </ul>	<ul style="list-style-type: none"> <li>• HTTP and RTSP authentication</li> </ul>

### System Management

Event Management	<ul style="list-style-type: none"> <li>• Motion detection</li> <li>• Event notification and uploading of snapshots/video clips via e-mail or FTP</li> </ul>	<ul style="list-style-type: none"> <li>• Supports multiple SMTP and FTP servers</li> <li>• Multiple event notifications</li> <li>• Multiple recording methods for easy backup</li> </ul>
Remote Management	<ul style="list-style-type: none"> <li>• Remote management via D-ViewCam™ software</li> <li>• Configuration interface accessible via web browser</li> </ul>	<ul style="list-style-type: none"> <li>• Remotely take snapshots/video clips and save to local hard drive</li> </ul>
System Requirements for Web Interface	<ul style="list-style-type: none"> <li>• Windows 10/8/7 or Mac OS X 10.9 and higher</li> </ul>	<ul style="list-style-type: none"> <li>• Internet Explorer 9 and higher (on Windows), Firefox 12-51, 52 ESR, Chrome 42 and higher, or Safari 9 and higher (on Mac OS X).</li> </ul>
D-ViewCam™ System Requirements	<ul style="list-style-type: none"> <li>• Operating System:               <ul style="list-style-type: none"> <li>• 32-bit: Windows 8 / 7 (SP1)</li> <li>• 64-bit: Windows 10 / 8 / 7 (SP1) / Server 2012 / Server 2008 R2</li> </ul> </li> </ul>	<ul style="list-style-type: none"> <li>• Web Browser: Internet Explorer 7 or higher</li> <li>• Protocol: Standard TCP/IP</li> </ul>
D-ViewCam™ Software Functions	<ul style="list-style-type: none"> <li>• Remote management of up to 32 cameras</li> <li>• Supports all management functions provided in web interface</li> </ul>	<ul style="list-style-type: none"> <li>• Viewing of up to 32 cameras on one screen</li> <li>• Scheduled, motion triggered, or manual recording options</li> </ul>

# DCS-4705E 5-Megapixel Outdoor Mini Bullet Camera

General	
Weight	• 445 g ± 5 %
External Power Adapter (not included)	• Input: 100 to 240 V AC, 50/60 Hz • Output: 12 V DC 1.5 A
Power Consumption	• 3.2 (DC) / 3.1 W (PoE) ± 5%
Temperature	• Operating: -30 to 50 °C (-22 to 122 °F) • Storage: -20 to 70° C (-4° to 158° F)
Humidity	• Operating: 20 % to 80 % non-condensing • Storage: 5 % to 95 % non-condensing
Certifications	• CE • CE LVD • ICES • FCC • RCM
Dimensions	 <p>Technical drawing of the DCS-4705E camera showing dimensions: 98.1 mm (total length), 66.6 mm (lens assembly length), 164.7 mm (total length including mounting bracket), and Ø55 mm (diameter).</p>



For more information: [www.dlink.com](http://www.dlink.com)

**D-Link European Headquarters.** D-Link (Europe) Ltd., First Floor, Artemis Building, Odyssey Business Park, West End Road, South Ruislip HA4 6QE, United Kingdom. Specifications are subject to change without notice. D-Link is a registered trademark of D-Link Corporation and its overseas subsidiaries. All other trademarks belong to their respective owners. ©2018 D-Link Corporation. All rights reserved. E&OE.

Updated July 2018

**D-Link®**