

## How to Update the Firmware

### Update the PROM code:

- Modify the configure file for PROM code updating  
Specify the directory path and image file name for PROM code.

```
Code_type=PROM
Image_file="e:\switch\dgs3208\3208Prom.tfp"

#Code_type=RUNTIME
#Image_file="e:\switch\dgs3208\dgs3208.tfp"

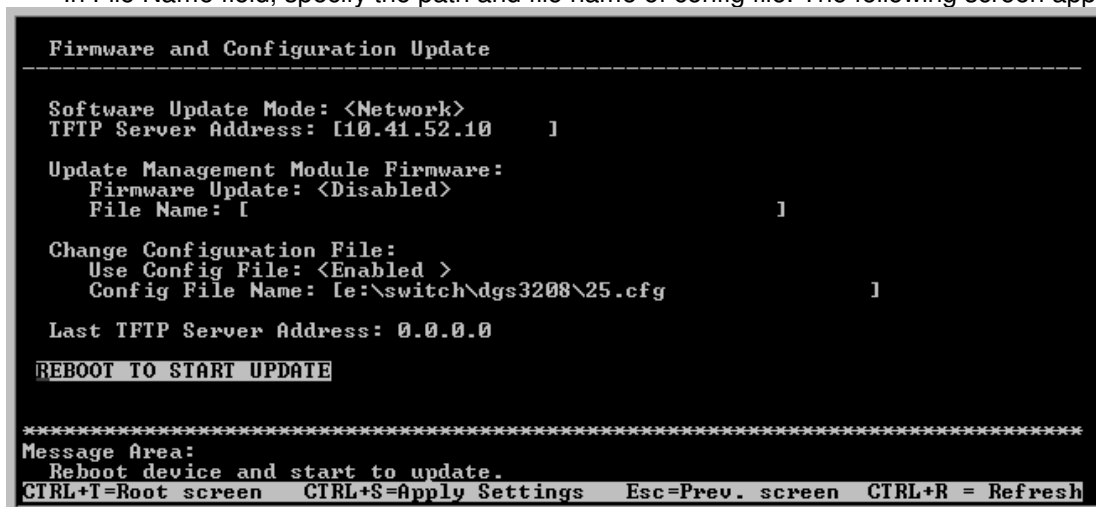
#Code_type=CONFIG
#Image_file="g:\d-link\des-32~1\basic_25.bc"

# specify IP address
#lp_addr = 10.41.52.35

# specify subnet mask
#Subnet_mask = 255.0.0.0

# specify default gateway
#Default_gateway = 10.254.254.254
```

- Enable your TFTP server.
- Enter console program; select **Firmware and Configuration Update** in the main menu.
- Set the Software Update Mode to "Network".
- Specify the IP address of your TFTP server.
- Set Use Config Files to "Enable"
- In File Name field, specify the path and file name of config file. The following screen appears:



```
Firmware and Configuration Update
-----
Software Update Mode: <Network>
TFTP Server Address: [10.41.52.10 ]

Update Management Module Firmware:
  Firmware Update: <Disabled>
  File Name: [ ]

Change Configuration File:
  Use Config File: <Enabled >
  Config File Name: [e:\switch\dgs3208\25.cfg ]

Last TFTP Server Address: 0.0.0.0

REBOOT TO START UPDATE

*****
Message Area:
Reboot device and start to update.
CTRL+I=Root screen CTRL+S=Apply Settings Esc=Prev. screen CTRL+R = Refresh
```

- Press REBOOT TO START UPDATE to initiate the update sequence.
- Restart the switch. Check the version of PROM code. is it the correct version you want to update?

## Update the RUNTIME code:

- Modify the configure file for RunTime code updating  
Specify the directory path and image file name for RunTime code.

```
#Code_type=PROM
#Image_file="e:\switch\dgs3208\3208Prom.tfp"

Code_type=RUNTIME
Image_file="e:\switch\dgs3208\dgs3208.tfp"

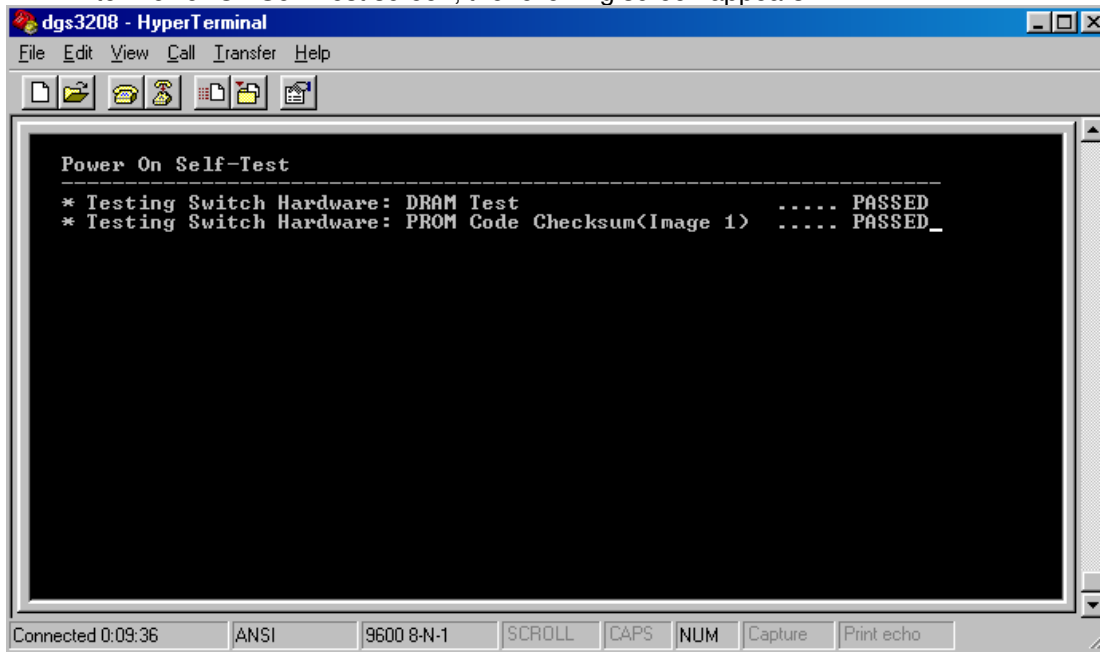
#Code_type=CONFIG
#Image_file="g:\d-link\des-32~1\basic_25.bc"

# specify IP address
#Ip_addr = 10.41.52.35

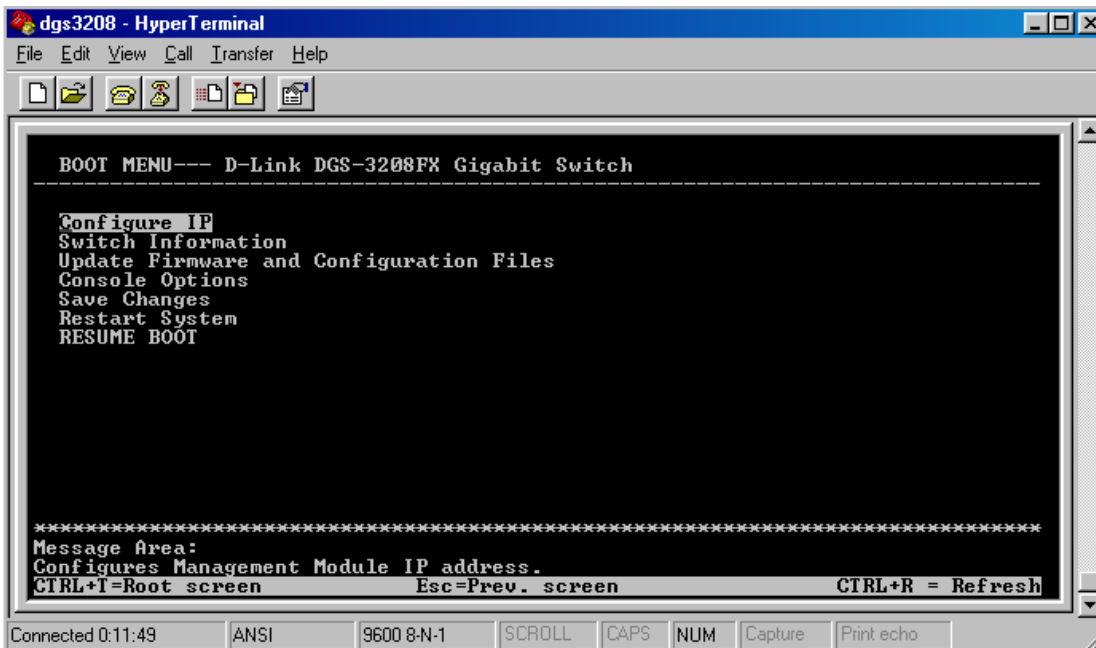
# specify subnet mask
#Subnet_mask = 255.0.0.0

# specify default gateway
#Default_gateway = 10.254.254.254
```

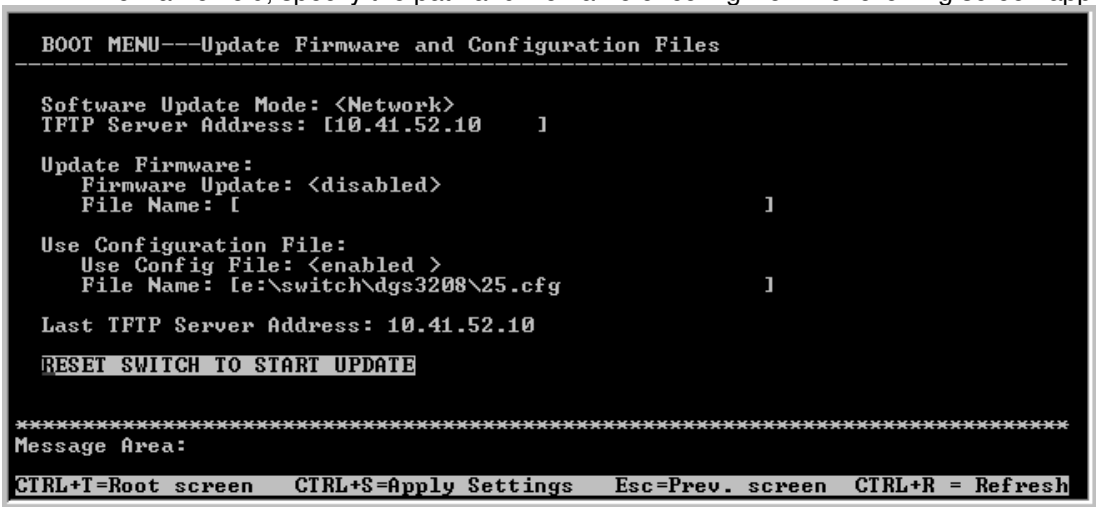
- Enable your TFTP server.
- Enter console program; select **Restart System** in the main menu.
- Enter Power On Self-Test screen; the following screen appears:



- When you see \* **Testing Switch Hardware: PROM Code Checksum(Image 1) ....PASSED**, please press **Ctrl-C** keys to enter **BOOT MENU**. The follow screen appears:



- Please select **Configure IP** to assign an IP address to the switch. Note that press **Ctrl-S** keys to save the IP setting.
- Enter **BOOT MENU**; select **Update Firmware and Configuration Files** in the main menu.
- Set the Software Update Mode to “Network”.
- Specify the IP address of your TFTP server.
- Set Use Config Files to “Enable”
- In File Name field, specify the path and file name of config file. The following screen appears:



- Press **RESET SWITCH TO START UPDATE** to initiate the update sequence.
- Restart the switch. Check the version of PROM code. is it the correct version you want to update?