

D-Link Quick Installation Guide

This product can be set up using any current Web browser, i.e., Internet Explorer 6.0 or Netscape Navigator 7.0

DCS-1000
D-Link Fast Ethernet
Internet Camera



Before You Begin

You must have at least the following:

- Web Browser
- Wired Hub/Switch/Router
- CD-ROM Drive

Check Your Package Contents

These are the items included with your purchase:

If any of the below items are missing, please contact your reseller.



- One Internet Camera



- One Installation CD-ROM (containing Drivers, Installation Guide, Software, and Manual)



- Mounting Kit



- One Category 5 Ethernet Cable



- One AC Power Adapter

System Requirements

- Java Enabled and Compliant Web Browser
- CPU: Pentium II, 266 MHz or above
- Memory Size: 32 MB (64 MB recommended)
- VGA card resolution: 800x600 or above

1 Hardware Installation

Connect the Ethernet Cable

Connect an Ethernet cable to the network cable connector located on the DCS-1000's rear panel and attach it to the network.



Attach the External Power Supply

Attach the external power supply to the DC power input connector located on the rear panel of your camera and connect it to your local power supply.
Note: Power source is confirmed when the blue LED Power Indicator on the Internet Camera is illuminated. Network connection is indicated by an orange LED.



2 Running the Setup Wizard

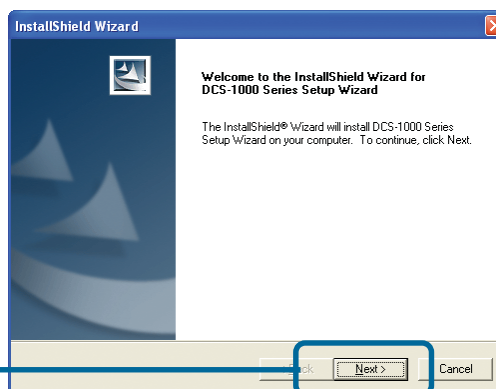
You are now ready to run the Setup Wizard, which will guide you quickly through the installation process.

Insert the **D-Link DCS-1000** Driver CD into your CD-ROM drive.

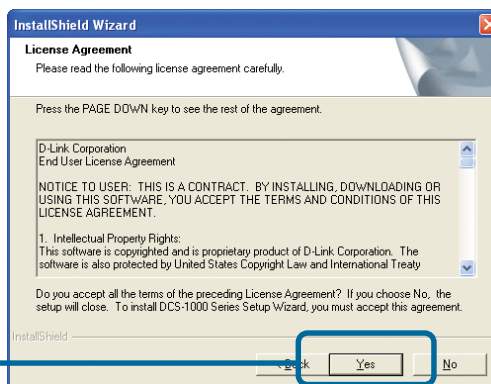
Click **Install Wizard**



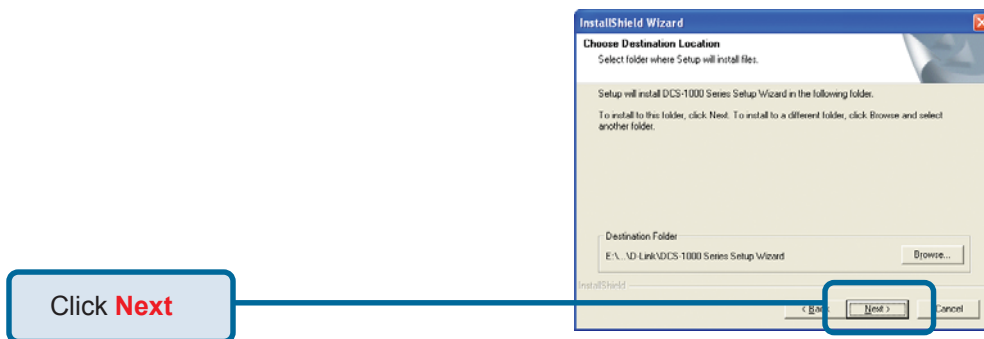
Click **Next**



Click **Yes**



2 Running the Setup Wizard (continued)



To run the Setup Wizard, click on **Start->Programs->DCS-1000 Series Setup Wizard**.

Your camera's IP address will be displayed here if it is valid.

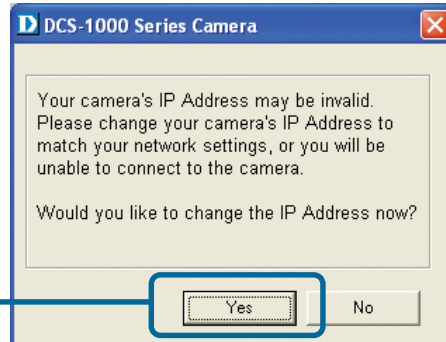
Click **Wizard** to begin



2 Running the Setup Wizard (continued)

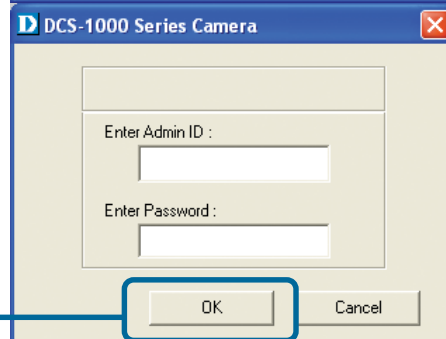
This screen appears if the default IP Address of the camera (192.168.0.20) does not correspond with your local area network settings. You must assign an IP address for your camera that corresponds with your network's IP addressing scheme.

Click **Yes**



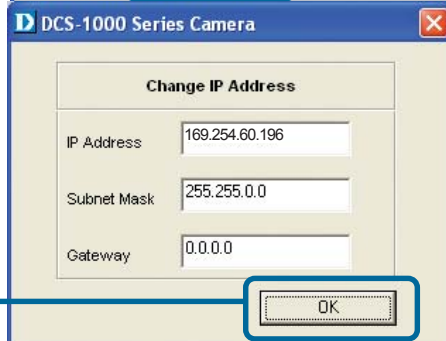
By default, the Admin ID and Password are blank. If you are running this Setup Wizard for the first time, simply click OK to continue.

Click **OK**



The IP Address of your camera must correspond with your network settings for you to access the camera. If you are unsure of what these settings should be, please check with your network administrator.

Click **OK**



You must change the Admin ID and Password immediately to protect your camera against unauthorized access. By default, the Admin ID and Password are blank. To change the Admin ID and Password, select both **Change** boxes and enter in a new Admin ID and Password.

Click **Next**



2 Running the Setup Wizard (continued)

Input the correct settings for your camera into the **IP Address** and **Subnet Mask** fields. Remember that these settings must correspond with your network settings.

D-Link
Building Networks for People

Setup Wizard

Set IP Address

IP Address:

Subnet Mask:

Default Gateway:

Back Next Exit

Click **Next**

If you need to make any changes, click **Back** to modify your camera settings. Otherwise, click **Restart** to save your settings.

D-Link
Building Networks for People

Setup Wizard

Admin ID:

Password:

IP Address:

Subnet:

The Setup Wizard has completed. Click on **Back** to modify your settings. Click **Restart** to save your current settings and reboot the DCS-1000 Series Camera.

Back Restart

Click **Restart**

Your setup is now complete! When the main Setup Wizard screen appears after clicking **Restart**, you are ready to view your camera's images. Click **Link** to automatically launch your web browser and view your images.

D-Link
Building Networks for People

Setup Wizard

Wizard

Link

Edit

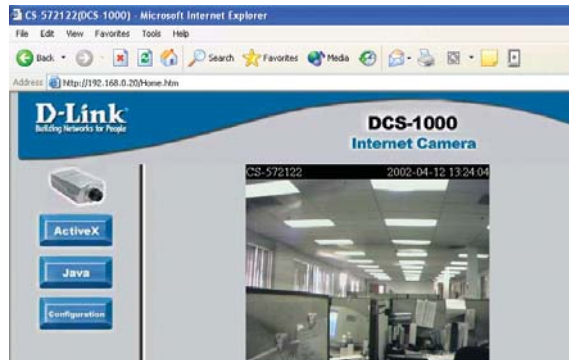
Abort

Mac Address	Current IP Address	Assigned
08:00:0A:17:40:1D	192.254.60.196	ok

Click **Link**

3 Viewing the Streaming Video

You may access your camera's images at any time simply by using your favorite Web browser. Type "http://**address**" in the address box where **address** is the IP address that you assigned to the camera from the previous section. Press **Enter**. Note: This screen can also be accessed from the Setup Wizard using the Link button.



- The Welcome screen of the Internet Camera will appear. You may either choose to view your video images in Java mode or Active X mode. If you have a Java enabled web browser, you will be able to view the video image automatically. If you do not have Java on your computer, please refer to the Tips section below to install Java on your computer. If you would like to view the image using Active X mode, please refer to the manual on how to install Active X.
- Next, you will want to adjust the focus on the lens. To do this, turn the lens slowly clockwise or counter-clockwise until a desired image appears on your web browser. AVOID overturning the lens as this will either displace the lens from your camera or damage the lens.

4 Tips

- If you are installing several cameras, it is recommended to use one computer to configure all of them before you install them into your planned locations. To avoid IP address conflict, use 192.168.0.20 for the LAST camera that you plan on installing.
- Make sure that you have the latest version of Java installed on your computer to ensure proper operation when viewing the video in Java mode. Java can be downloaded for free from Sun's web site. (<http://www.sun.com/download/>)
- Please refer to the Manual located on the CD-ROM for additional information regarding all features and instructions related to the Internet Camera. The Manual also provides a troubleshooting section.

Technical Support

You can find software updates and user documentation on the D-Link website.

D-Link provides free technical support for customers within the United States and within Canada for the duration of the warranty period on this product.

U.S. and Canadian customers can contact D-Link technical support through our website, or by phone.

Tech Support for customers within the United States:

D-Link Technical Support over the Telephone:

(877) 453-5465

24 hours a day, seven days a week.

D-Link Technical Support over the Internet:

<http://support.dlink.com>

[email:support@dlink.com](mailto:support@dlink.com)

Tech Support for customers within Canada:

D-Link Technical Support over the Telephone:

(800) 361-5265

Monday to Friday 8:30am to 9:00pm EST

D-Link Technical Support over the Internet:

<http://support.dlink.ca>

[email:support@dlink.ca](mailto:support@dlink.ca)

