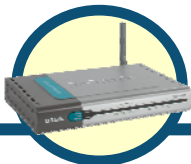


D-Link Quick Installation Guide

This product can be set up using any current web browser, i.e., Internet Explorer 6 or Netscape Navigator 6.2.3.



DVA-G3340S

Wireless VoIP Router

Before You Begin

If you purchased this Router to share your high-speed Internet connection with other computers, you must have an established Internet account from an Internet Service Provider (ISP). It's best to use the same computer that is connected to your router for configuring the DVA-G3340S Wireless VoIP Router. The DVA-G3340S acts as a DHCP server and will assign all the necessary IP address information on your network. See the Quick Installation Guide or the Manual on the CD-ROM for setting each network adapter to automatically obtain an IP address.

Check Your Package Contents



DVA-G3340S
shown with antenna



CD-ROM
containing Manual and Warranty



USB Cable



RJ-11 Cable



Ethernet Cable



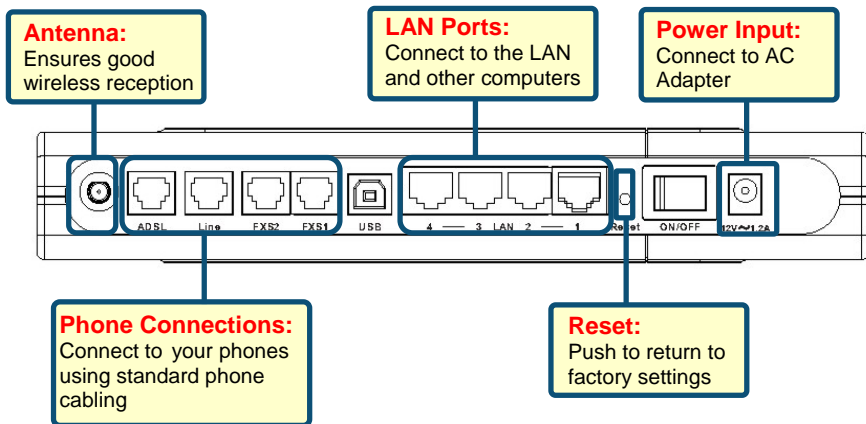
**12V, 1.2A Power
Adapter**



Using a power adapter with a different voltage rating will damage and void the warranty for this product.

1

Connecting the Router to your Computer



- A.** First, connect the power adapter to the power input at the back panel of the DVA-G3340S and then plug the other end of the power adapter to a wall outlet or power strip. On the front of the device, the Power LED will turn ON to indicate proper operation.
- B.** Insert one end of the Ethernet cable into an Ethernet (LAN) port on the back panel of the DVA-G3340S and the other end of the cable to an Ethernet Adapter or available Ethernet port on your computer.
- C.** Insert the telephone cable included with the Router into the ADSL port, then connect the cable to your telephone line.
- D.** Check the LED display on the front of the Router to confirm that the connections have been made.

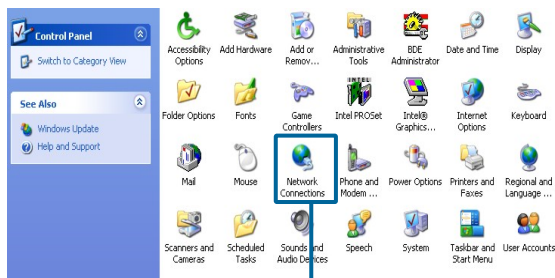
2

Configure IP Settings

To connect to the network, make sure the network adapter in your computer is configured properly. Here's how to configure the network adapter to obtain an IP address automatically for the DVA-G3340S Wireless VoIP Router.

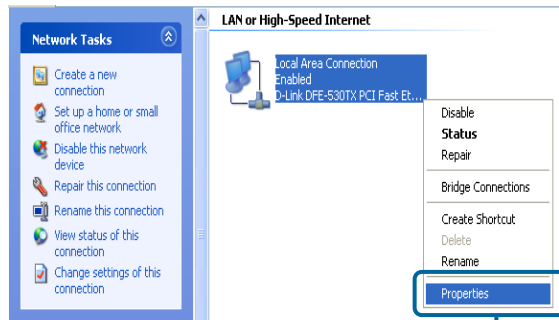
For Microsoft Windows XP

Go to **Start** > select **Settings** > click **Control Panel** > **Double-click** on the **Network Connections** icon



Double-click on **Network Connections**

Right-click the Local Area Connection icon, and then select **Properties**.

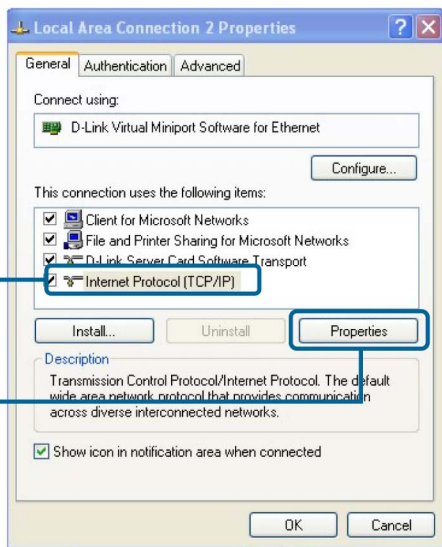


Select **Properties**

The dialog box displays a list of currently installed network items.

Click **Internet Protocol (TCP/IP)**

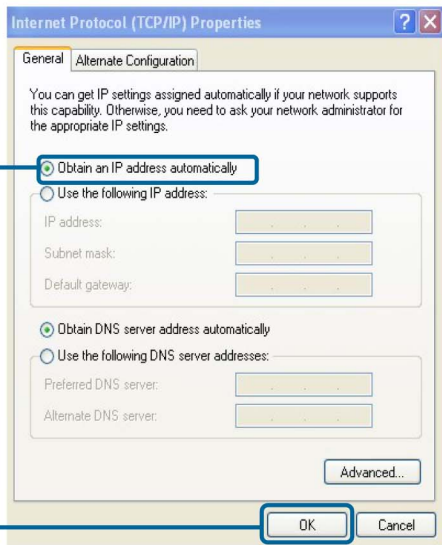
Click **Properties**



Make the choice to get the IP settings assigned automatically.

Select **Obtain an IP address automatically**

Click **OK**.

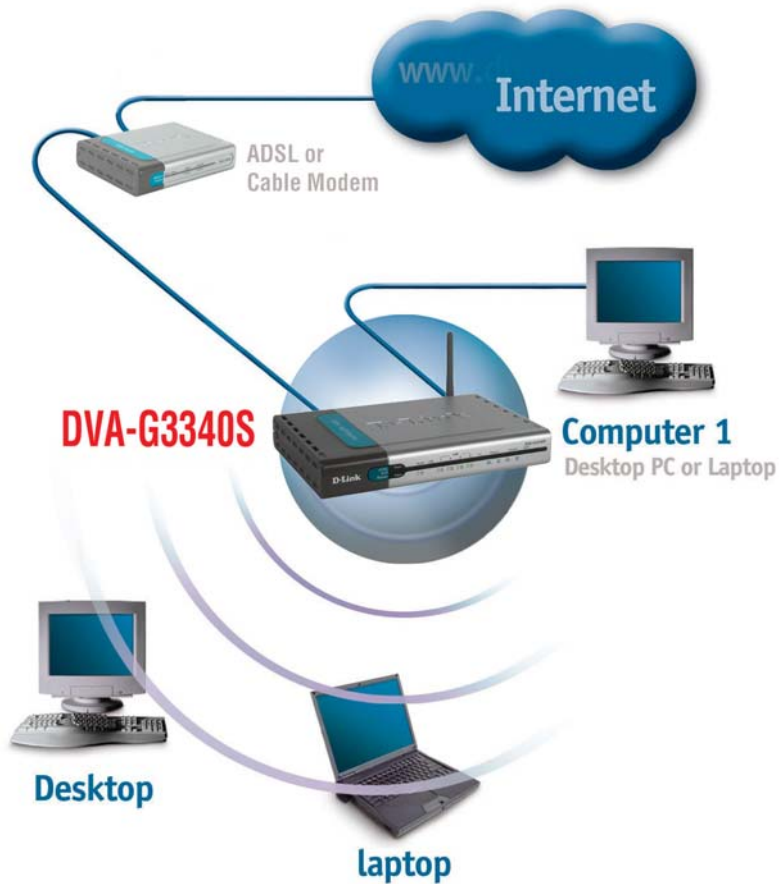


3

Connecting Additional Computers to the DVA-G3340S Wireless VoIP Router

Using additional Ethernet (CAT5 UTP) cables, connect your Ethernet-equipped computers to the LAN ports on the back panel of the DVA-G3340S.

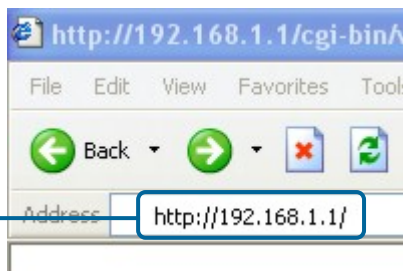
When you have completed the steps in this ***Quick Installation Guide***, your connected network should look similar to this:



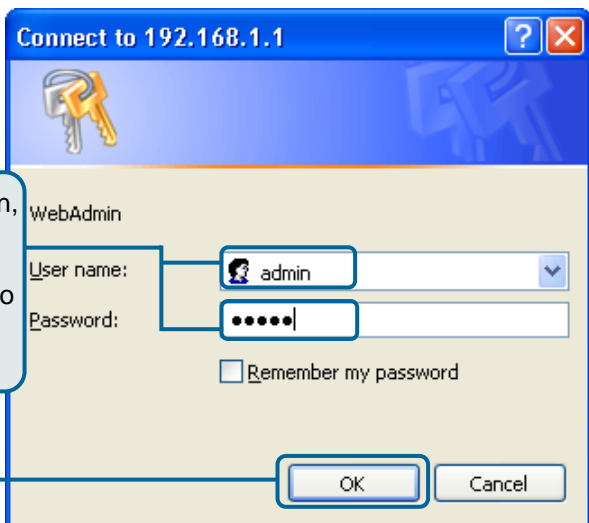
4

Initial Web Configuration

Open your Web browser and type **http://192.168.1.1** into the URL address box. Press **Enter** or **Return**.



The login dialog box appears:

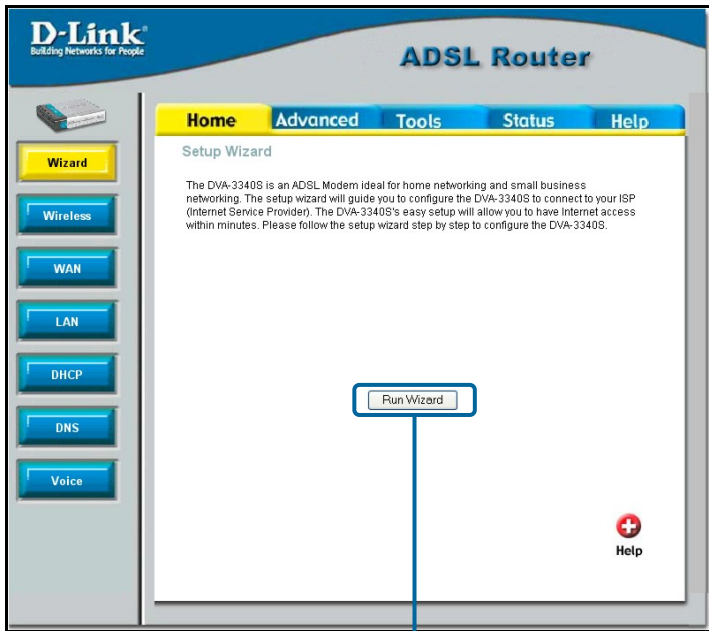


When you first log in, the User name is **admin** and the Password is also **admin**. These may be changed later.

Click **OK**.

The **Home** window appears:

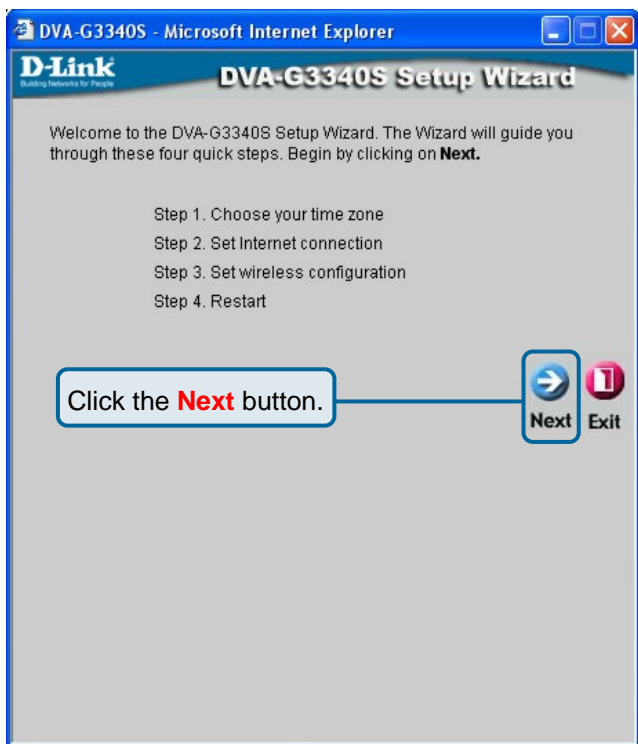
Clicking a hyperlink on the menu on the upper left side of the window brings up a detailed configuration window (see the next section for a brief description of three typical WAN connection examples).

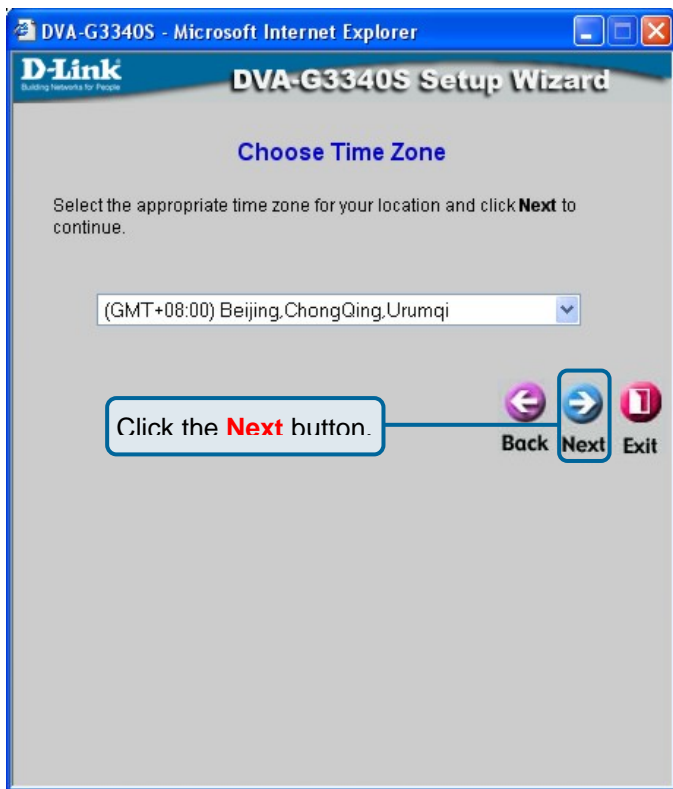


Click **Run Wizard**.

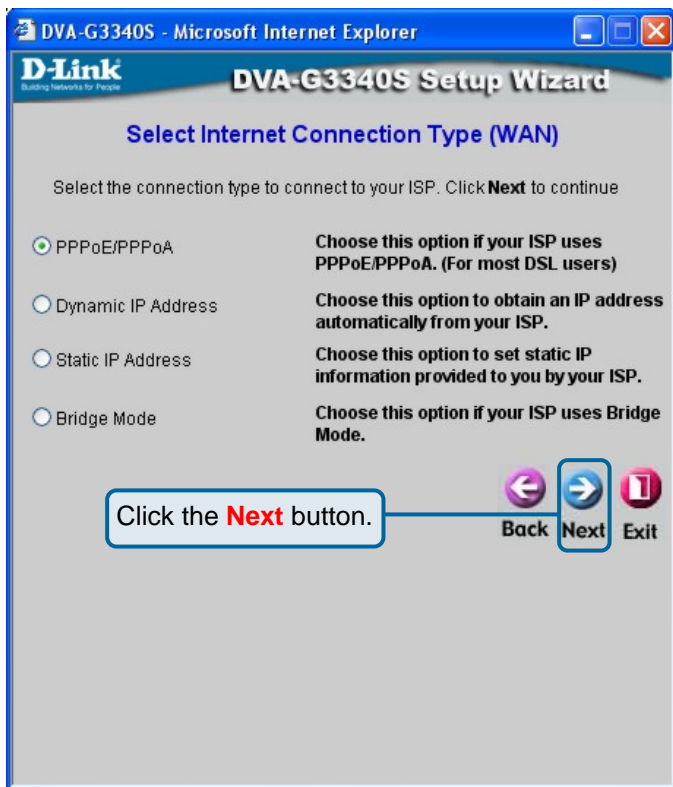
5 Configuring the WAN (Internet) Connection

The following are some typical WAN connection examples for **Dynamic IP Address** (DHCP), **Static IP Address**, or **PPPoE** connections. Click **Run Wizard** on the menu above to view the following **Wizard** window:





Click the **Next** button to continue.



The window above allows you to select between the three most common ways to connect to your ISP's WAN (Internet).

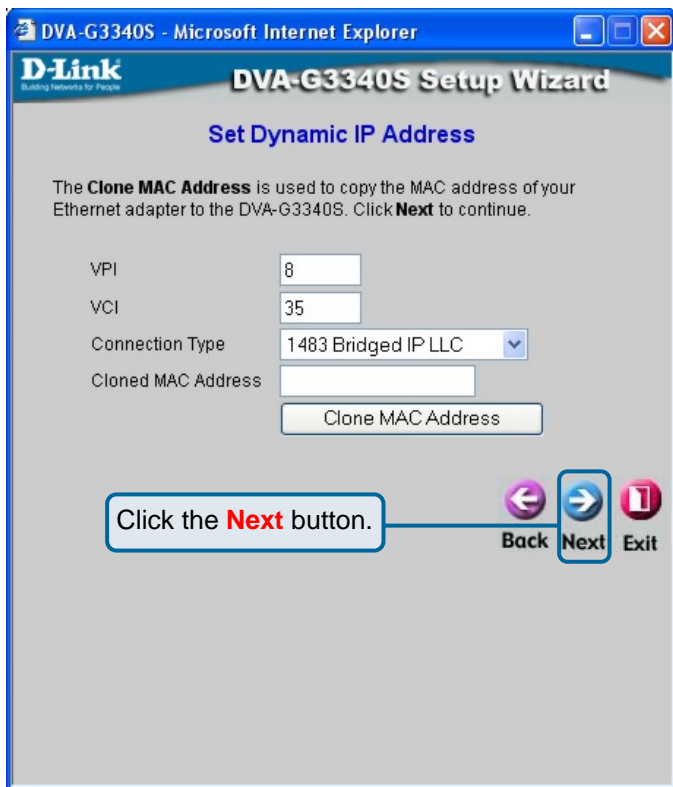
Select **Dynamic IP Address** if your ISP automatically assigns you an IP address. This is the most common way of connecting the DVA-G3340S to another modem, such as a Cable modem.

Select **Static IP Address** if your ISP provided you with IP address information that will not change.

Select **PPPoE** if your ISP uses the Point-to-Point over Ethernet (PPPoE) protocol to make the connection. This is the most common connection type for DSL users.

Dynamic IP Address

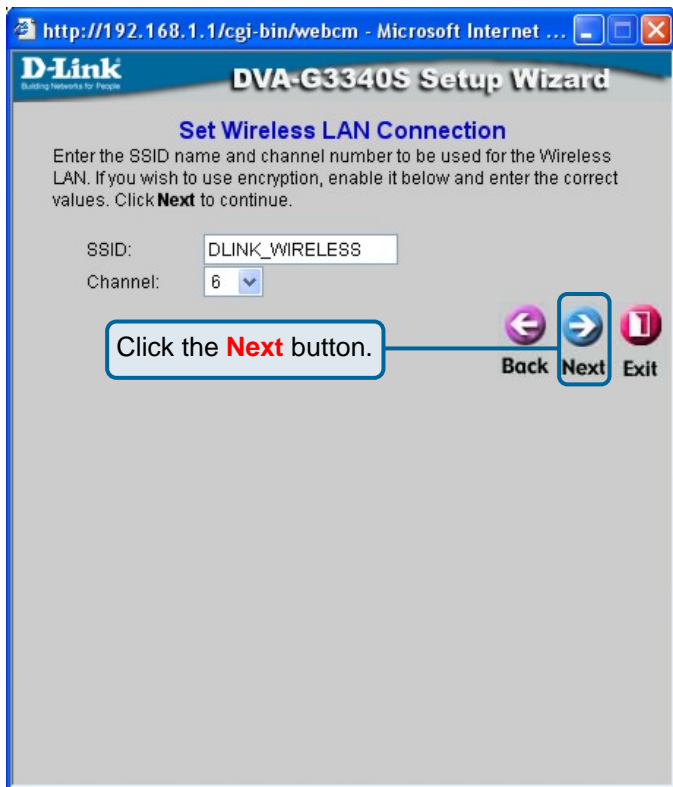
Select **Dynamic IP Address** if your ISP automatically assigns you an IP address. This is the most common way of connecting the DVA-G3340S to another modem, such as a Cable modem.



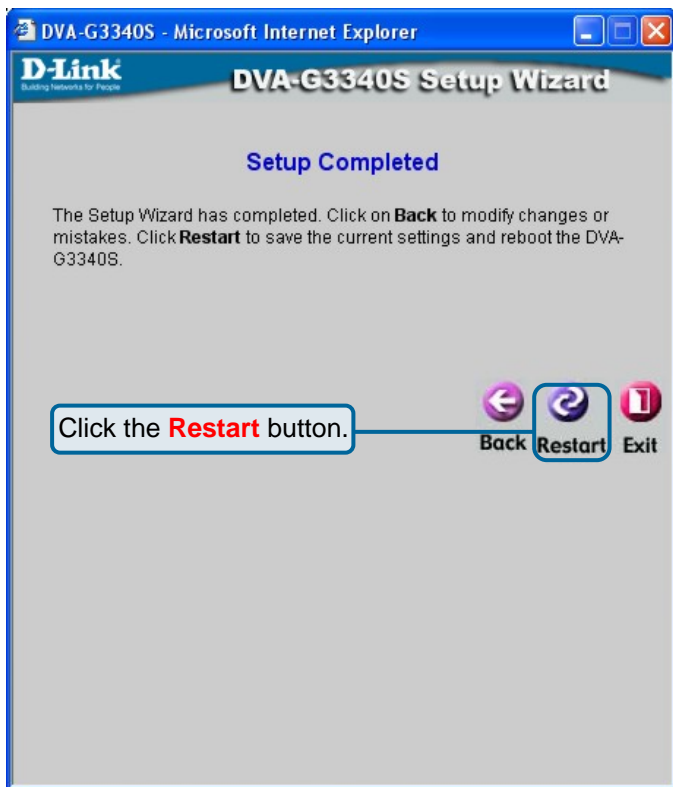
Enter the host name, if required, in the **Host Name** field.

If you are using a Cable modem to make the connection to your ISP's WAN (Internet), click the **Clone MAC Address** button. This will copy the MAC address of your PC's network adapter to the DVA-G3340S. The Cable modem will then recognize the DVA-G3340S and make a valid connection.

Click the **Next** button to continue.



Enter the SSID and Channel number you want to use for your Wireless LAN.
Click Next to continue.



Click the **Restart** button to save the settings and restart the router.

Static IP Address

Select **Static IP Address** if your ISP provided you with IP address information that will not change.

DVA-G3340S - Microsoft Internet Explorer

D-Link
Building Networks for People

DVA-G3340S Setup Wizard

Set Static IP Address

Enter the static IP information provided to you by your ISP. Click **Next** to continue.

VPI

VCI

IP Address

Subnet Mask

ISP Gateway Address

Primary DNS Address

Secondary DNS Address

Connection Type

Click the **Next** button.

Back Next Exit

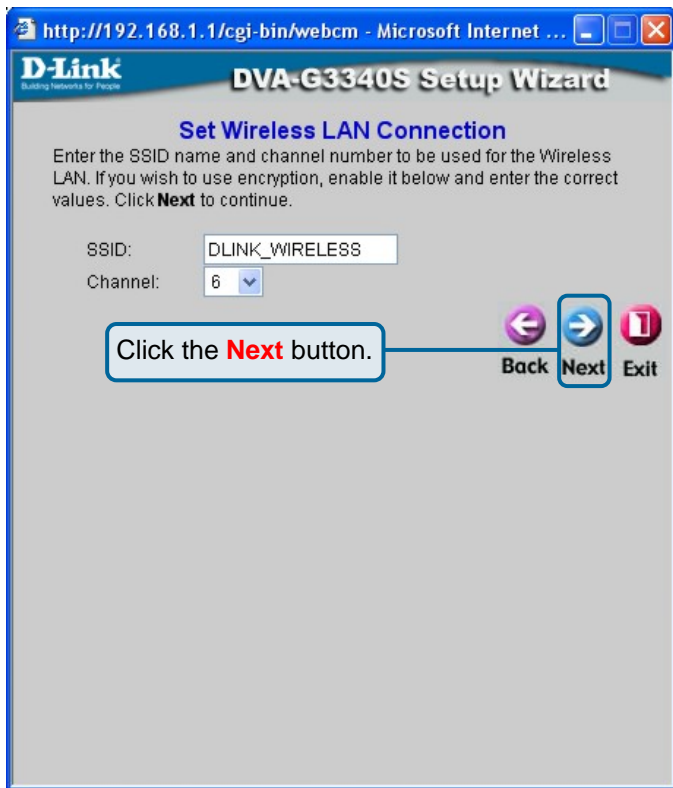
You will need your ISP to provide you with the IP address information about your Internet account, if your ISP statically assigns an IP address to you.

Enter the provided IP address in the **WAN IP Address** field.

Enter the corresponding subnet mask in the **WAN Subnet Mask** field.

Enter the IP address of your ISP's gateway in the **WAN Gateway Address** field.

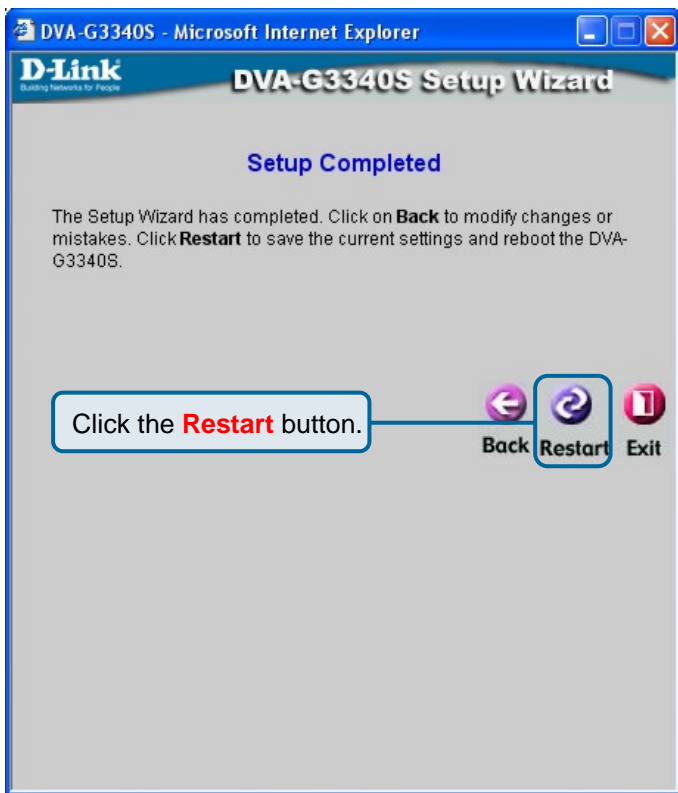
Enter the IP address of a Domain Name Server (DNS) in the **Primary DNS Address** field.



Click the **Next** button to continue.

Enter the SSID and Channel number you want to use for your Wireless LAN.

Click Next to continue.



Click the **Restart** button to save the settings and restart the router.

PPPoE

Select **PPPoE** if your ISP uses the Point-to-Point over Ethernet (PPPoE) protocol to make the connection. This is the most common connection type for DSL users.

DVA-G3340S - Microsoft Internet Explorer

D-Link
Building Networks for People

DVA-G3340S Setup Wizard

Set PPPoE / PPPoA

Enter the PPPoE/PPPoA information provided to you by your ISP. Click **Next** to continue.

User Name

Password

VPI

VCI

Connection Type

Click the **Next** button.

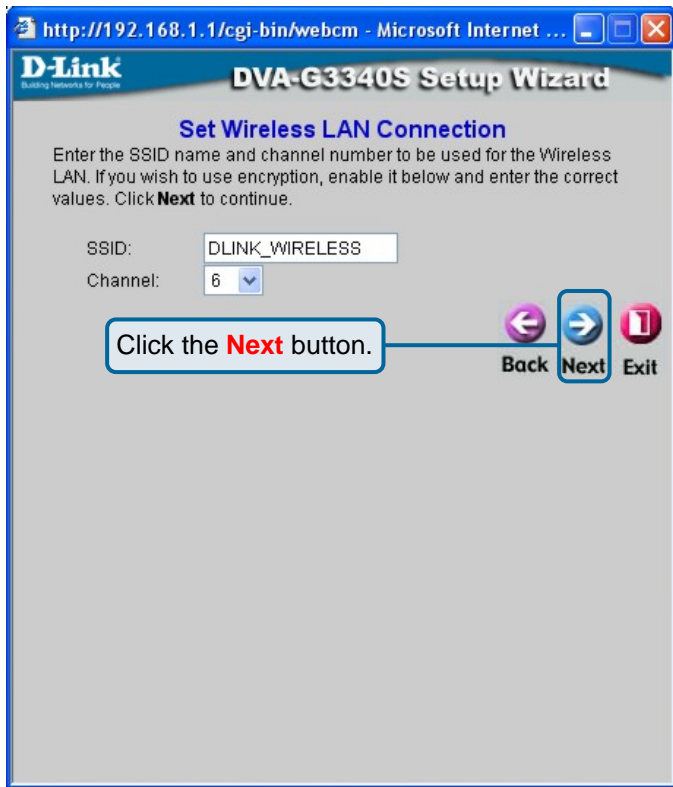
Back Next Exit

Enter the User Name for your account in the **User Name** field.

Enter the Password for your account in the **Password** field.

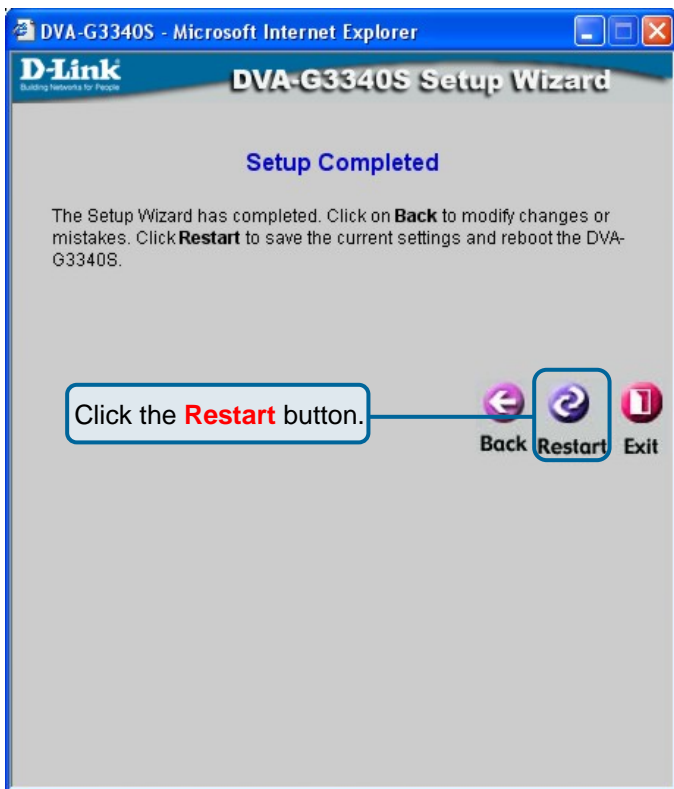
Confirm the Password by entering it again in the **Retype Password** field.

Click the **Next** button to continue.



Enter the SSID and Channel number you want to use for your Wireless LAN.

Click Next to continue.



Click the **Restart** button to save the settings and restart the router.

Technical Support

You can find software updates and user documentation on the D-Link websites.

D-Link provides free technical support for customers within Canada, the United Kingdom, and Ireland.

Customers can contact D-Link technical support through our websites, or by phone.

For Customers within The United Kingdom & Ireland:

D-Link UK & Ireland Technical Support over the Telephone:

08456 12 0003 (United Kingdom)

+44 8456 12 0003 (Ireland)

Monday to Friday 8:00 am to 10:00 pm GMT

Sat & Sun 10.00 am to 7.00 pm GMT

D-Link UK & Ireland Technical Support over the Internet:

<http://www.dlink.co.uk>

<ftp://ftp.dlink.co.uk>

For Customers within Canada:

D-Link Canada Technical Support over the Telephone:

1-800-361-5265 (Canada)

Monday to Friday 7:30 am to 12:00 am EST

D-Link Canada Technical Support over the Internet:

<http://support.dlink.ca>

email: support@dlink.ca

D-Link[®]
Building Networks for People