

Contents of Package:

- DWL-520 11Mbps Wireless PCI Adapter
- Printed Quick Installation Guide
- CD with Manual and Drivers

If any of the above items are missing, please contact your reseller.

1

Installing the DWL-520

Before you start, make sure to turn off your computer and unplug the power cord.

Note: To avoid damage caused by static electricity, make sure to properly ground yourself by first touching a metal part of your computer to discharge any static electricity before working with the DWL-520 Wireless PCI Adapter.

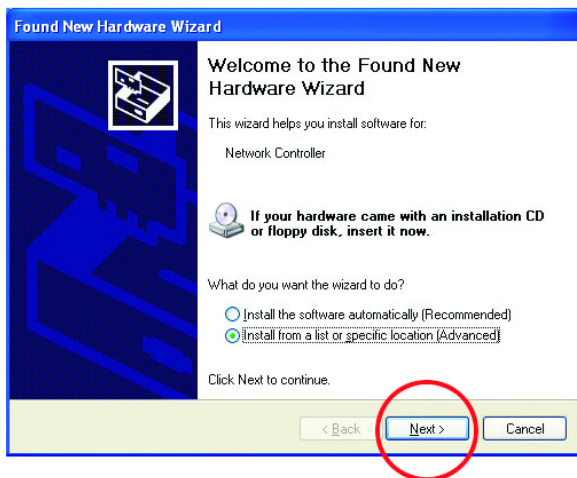


- **Remove** the back cover of the computer.
- **Install** the DWL-520 carefully and firmly into an available PCI slot which is usually “white” or “cream” colored
- **Secure** the DWL-520 with a screw.
- **Replace** the computer’s cover.

2

Installing the Drivers

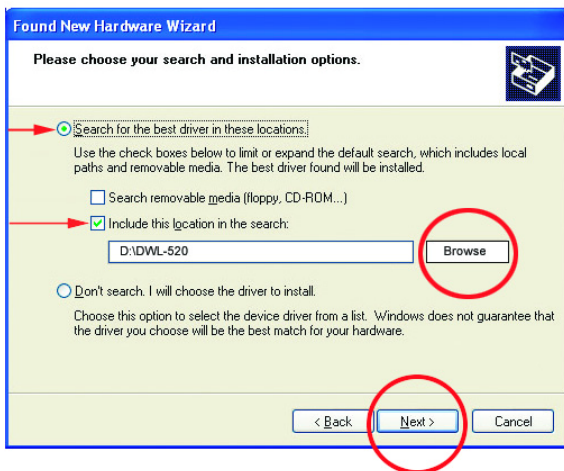
- **Plug in** the power cord and **turn on** your computer.
- **Insert** the DWL-520 driver CD into the CD-ROM drive.



The following **“Welcome”** screen will appear. Select **“Install from a list or specific location.”**

NOTE: If this screen does not appear, go to **Start > Settings > Control Panel > Add Hardware**. Double-click on the icon.

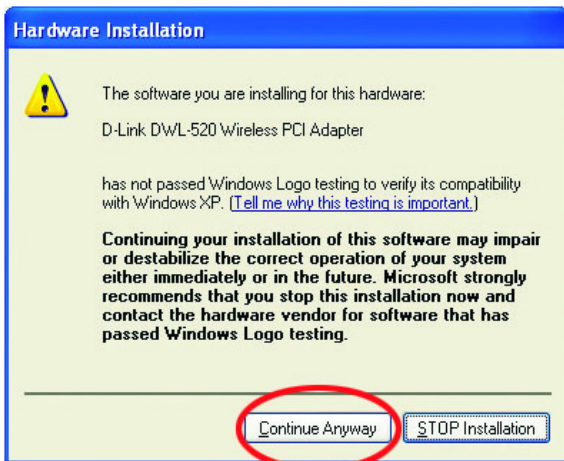
- Click **Next**



- Select **“Search for the best drivers in these locations.”**
- **Browse** for the drivers on the driver CD i.e. D:\DWL-520 where D: refers to the CD-ROM drive.
- Click **Next**

2

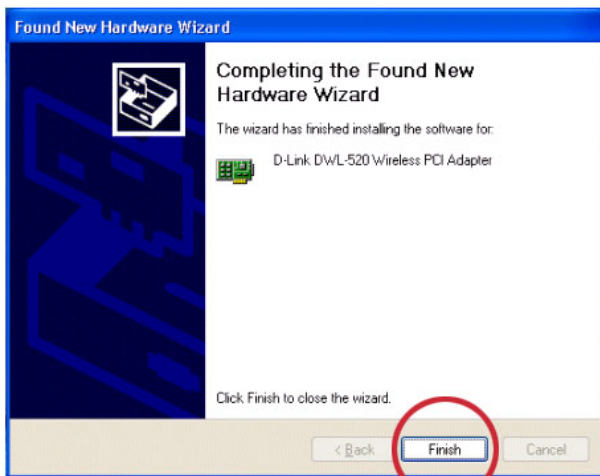
Installing the Drivers (continued)



- Click on “Continue Anyway.”

(D-Link software is currently undergoing Windows Logo testing. Microsoft certification is pending.)

Windows will load the necessary files.



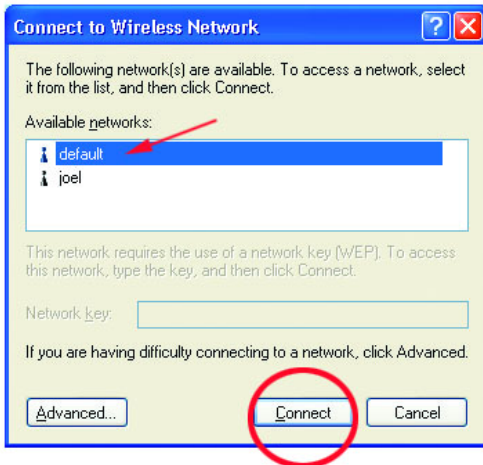
- Click “Finish” to complete the installation.

3

Connecting to the Wireless Network

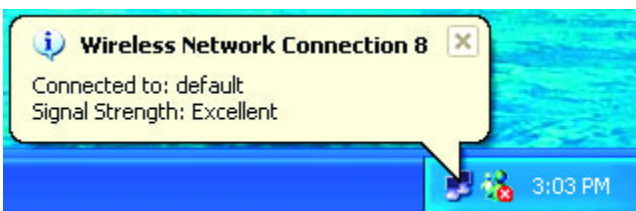
To connect to your wireless network, please do the following:

- **Double-click** on the **icon** in the task bar.



- The **“Connect to Wireless Network”** window will contain a list of all the available Wireless Networks. Select the proper network for your needs. In this example, **“default”** network was selected as shown.

- Click **“Connect.”**



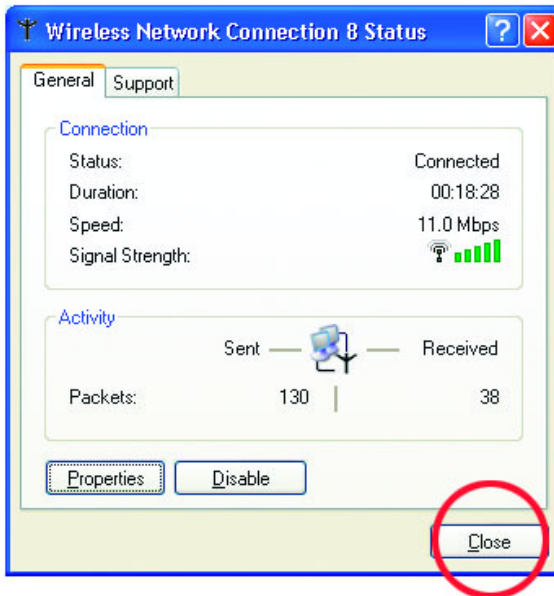
This notice is displayed to confirm the wireless connection.

- **Double-click** on the icon in the task bar to see status and information about your connected network. The window on the next page will appear.

3

Connecting to the Wireless Network *(continued)*

The window below will appear showing the current status of your connected network.



Technical Support

You can find the most recent software and user documentation on the **D-Link** website.

D-Link provides free technical support for customers within the United States for the duration of the warranty on this product.

U.S. customers can contact **D-Link** technical support through our web site, by e-mail, or by phone.

United States technical support is available Monday through Friday from 6:00 a.m. to 6:00 p.m. (PST.)

Technical Support Website: <http://www.support.dlink.com>

Email: support@dlink.com

Phone: 949-790-5290

If you are a customer residing outside of the United States, please refer to the list of **D-Link** locations that is included in the User's manual.

Notes

