

D-Link®

Quick Installation Guide

This product can be set up using Web browser, i.e., Internet Explorer 6 or Netscape Navigator 7.0



DKVM-IP1
1 Port KVM Switch
Over IP

Before You Begin

You must have at least the following:

- PS/2 Keyboard
- PS/2 Mouse
- VGA or Higher Monitor
- An available Ethernet port
- An available USB port(Optional)

Check Your Package Contents

These are the items included with your purchase:



DKVM-IP1 KVM Switch



Quick Installation Guide



CD-ROM with Manual and Software



USB 2.0 Cable in 6ft



3 in 1 KVM Cable in 3ft



Cat.5 Ethernet Cable



Serial Cable



Rack Mount Kit



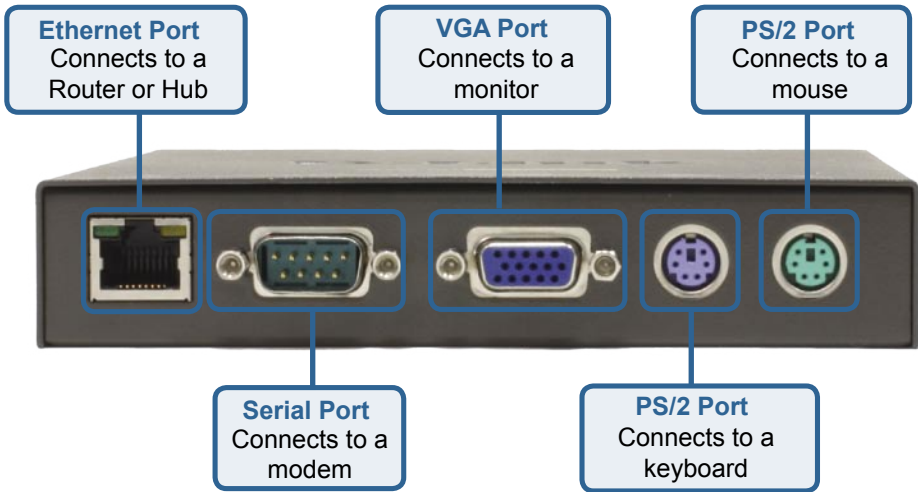
5V 2.5A DC Power Adapter

If any of the above items are missing, please contact your reseller.

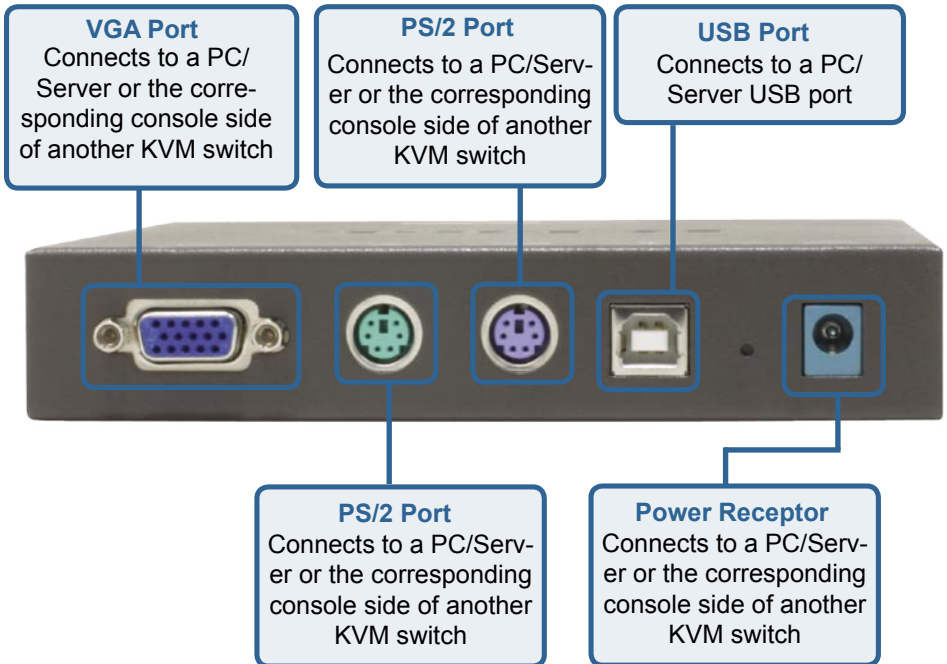
1

Hardware Overview

Front Panel



Rear Panel



2

Hardware Installation

Make sure that all your computers are turned OFF before installing the DKVM-IP1 to avoid mouse and keyboard errors when booting up your computers.

Plug the Ethernet cable to the Ethernet port located on the front panel of the DKVM-IP1



Plug the DB 9 connector into the serial port located on the front panel of the DKVM-IP1(OPTION)



Attach your monitor's HDB 15 VGA connector to the console port of the DKVM-IP1.



2

Hardware Installation

Attach your computer's PS/2 keyboard connector to the console port of the DKVM-IP1



Attach your computer's PS/2 mouse connector to the console port of the DKVM-IP1.



Attach the KVM cable(VGA connector) to the VGA port located on the rear panel of the DKVM-IP1.



2

Hardware Installation

Attach the KVM cable(mouse connector) to the mouse port located on the rear panel of the DKVM-IP1



Attach the KVM cable(keyboard connector) to the keyboard port located on the rear panel of the DKVM-IP1.



Plug the USB type B connector into the USB port located on the rear panel of the DKVM-IP1(Option)



Plug the power adapter into the receptor located on the rear panel of the DKVM-IP1



2

Hardware Installation

Attach the KVM cable(VGA connector) to the VGA port located on the back of your computer case or connect to the console VGA port located on the another KVM switch



Attach the KVM cable(keyboard connector) to the keyboard port located on the back of your computer case or connect to the console keyboard port located on the another KVM switch



Attach the KVM cable(mouse connector) to the mouse port located on the back of your computer case or connect to the console mouse port located on the another KVM switch



Power ON all your attached computers after you have completed the DKVM-IP1 hardware installation

⚠ Note : The DKVM-IP1 are provide two kind of console client, one is window client and another is java client for user alternative. Please refer to following
For Java client : Please download the "Java VM" program from [http:// www.java.com](http://www.java.com) or install from CD-ROM
For Windows client : Please install the "KVM Vision Viewer" that is included on CD-ROM

3

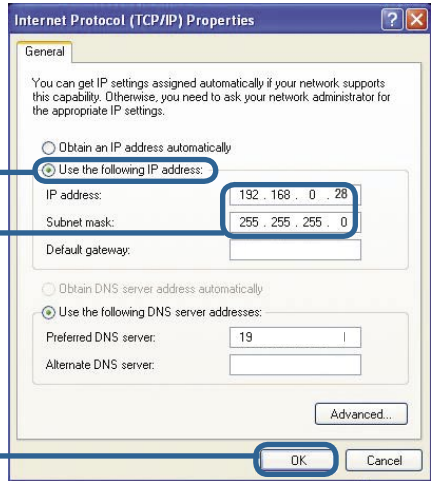
Configuring the DKVM-IP1

Input a static IP address in the same range as the DKVM-IP1(192.168.0.xx)

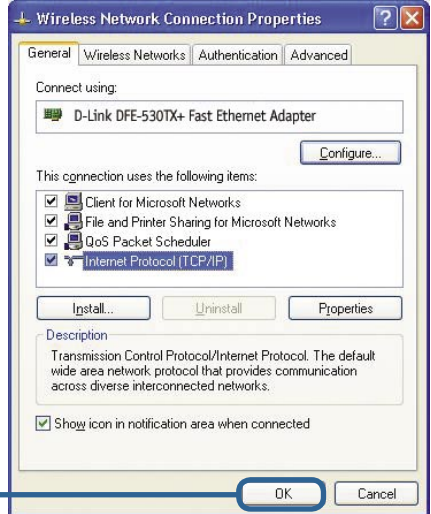
Select **Use the following IP address**

IP address: 192.168.0.28
Subnet mask: 255.255.255.0

Click **OK**



Click **OK** to apply the new settings



Open your Web browser and type **http://192.168.0.70** into the URL address box. Then press the **Enter** or **Return** key.



! Note : 1. If you connect this DKVM-IP1 directly to a PC, you will need a cross-over Ethernet cable.
2.If you plug the DKVM-IP1 to a Hub or Router, you will be able to use the cable included with your DKVM-IP1

This installation and configuration of the DKVM-IP1 is now complete.

Technical Support

You can find software updates and user documentation on the D-Link websites.

D-Link provides free technical support for customers within Canada, the United Kingdom, and Ireland.

Customers can contact D-Link technical support through our websites, or by phone.

For Customers within The United Kingdom & Ireland:

D-Link UK & Ireland Technical Support over the Telephone:

08456 12 0003 (United Kingdom)
+44 8456 12 0003 (Ireland)
Lines Open
8.00am-10.00pm Mon-Fri
10.00am-7.00pm Sat & Sun

D-Link UK & Ireland Technical Support over the Internet:

<http://www.dlink.co.uk>
<ftp://ftp.dlink.co.uk>

For Customers within Canada:

D-Link Canada Technical Support over the Telephone:

1-800-361-5265 (Canada)
Monday to Friday 7:30 am to 3:00 am ET

D-Link Canada Technical Support over the Internet:

<http://support.dlink.ca>
email: support@dlink.ca

D-Link[®]
Building Networks for People